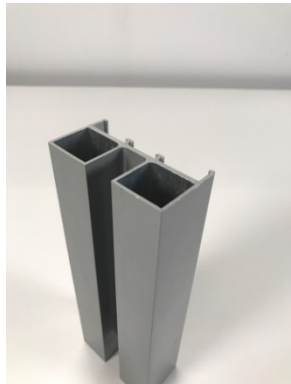
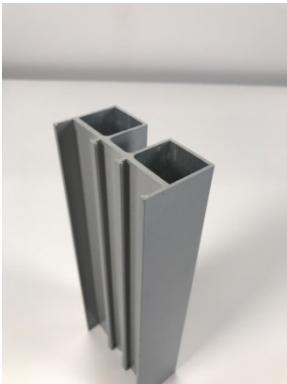




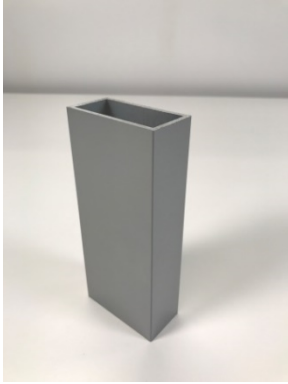
View Series

Typical Free-Standing Installation
(Sliding Door)

Materials:



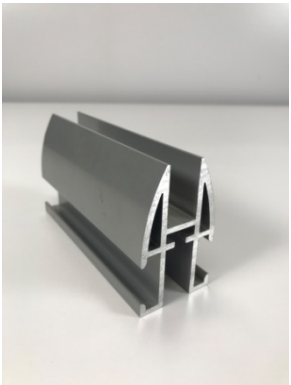
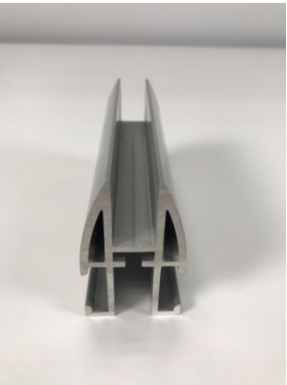
View Wall Start



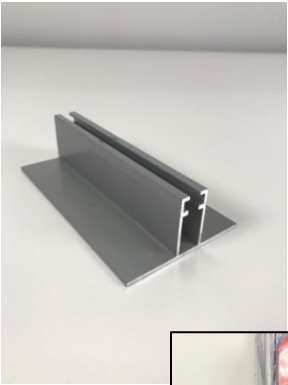
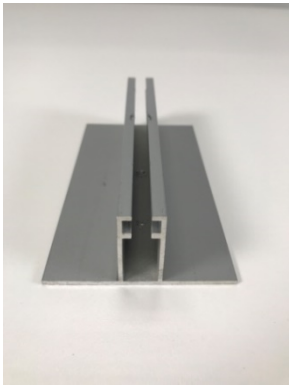
Freestanding Support Post



Flex Post



View Track (Arrowhead)



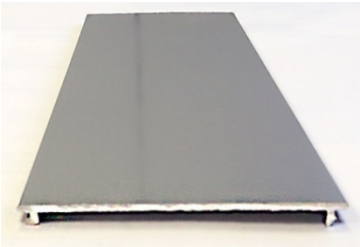
View Guide



View L-Bracket*



Leveling Screw



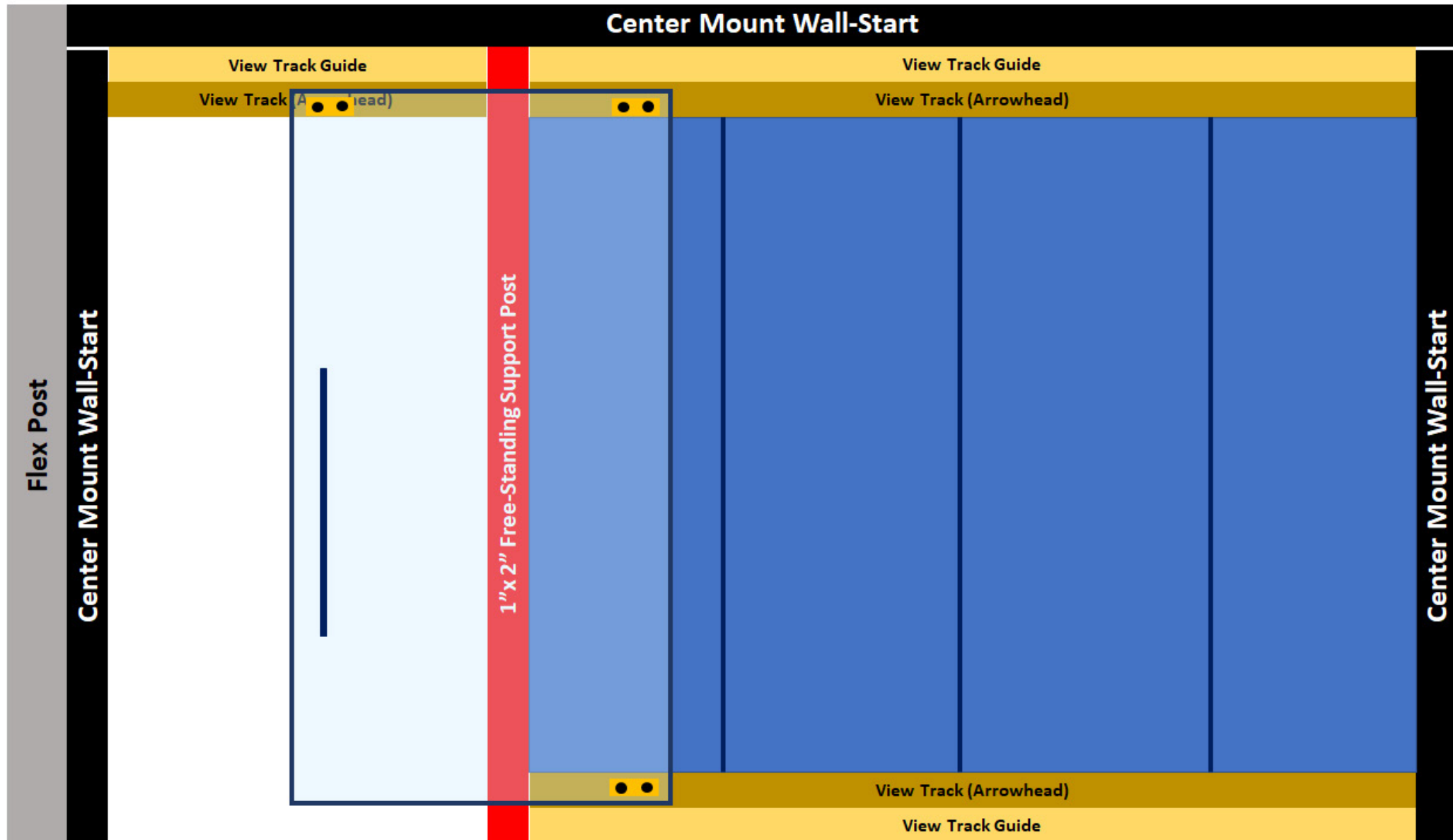
Finish Cover

Recommended Bits:



* L-Bracket to be cut on site. See page 6 for reference

View Series Typical Freestanding with Sliding Door Installation:





When installing a ***Free-Standing*** View Series project the Flex Post height will be at the top of the wall. There will be a **Horizontal Wall-Start** spanning across the top of the wall. The overall height of the wall is measured to the top of the Horizontal Wall-Start. The Vertical Wall-Starts and the 1"x 2" Support Post will be installed under the Horizontal Wall-Start.

PLEASE NOTE: The floor may not be level. You may need to adjust the height of each individual Flex Post, Vertical Wall-Start, and Freestanding Support Post to ensure Horizontal Wall-Start of the structure is 100% level.⁴



Attach the Vertical Wall-Start to the Flex Post using a 2 ½" screw. Install the Horizontal Wall-Start with the u-channel facing down on top of the Vertical Wall-Starts and the Support Post.



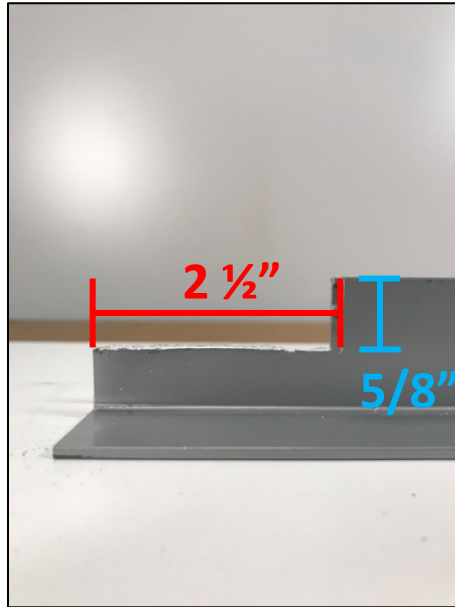
Use a View L-Bracket to connect the two Wall-Starts together.



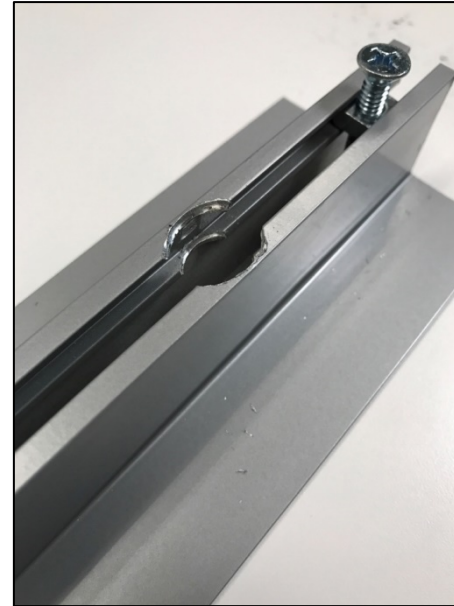
Cap the Vertical Wall-Start with a Flex Finish Cover



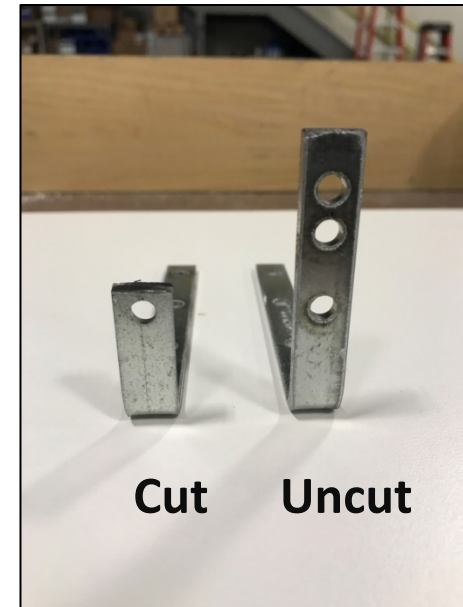
Prep the View Guide for installation. The end of the View Guide attaching to the Support Post will be notched. The View Guide prep is the same for the top and bottom View Guide.



Cut the Guide 2 1/2" back from the end and approximately 5/8" down. Use a utility knife to score the aluminum from the cut to the end. Break off using pliers. This will allow the ability to attach the cut off L-Bracket to the Support Post.



Using a step drill bit, drill holes through top of the Guide. This allows the hex head bit to fit into the Guide for the attaching screws.



The "Cut" off L-Bracket is used to attach the View Guide to the Support Post. The "Uncut" L-Bracket is used to attach the horizontal and vertical Wall-Starts together as shown in previous page.



Cut the View Track and Guide to install above the door opening. Prep the Guide to be attached to the horizontal Wall-Start. It does NOT need to be prepped to attach to the Support Post. The finished opening must be 38".

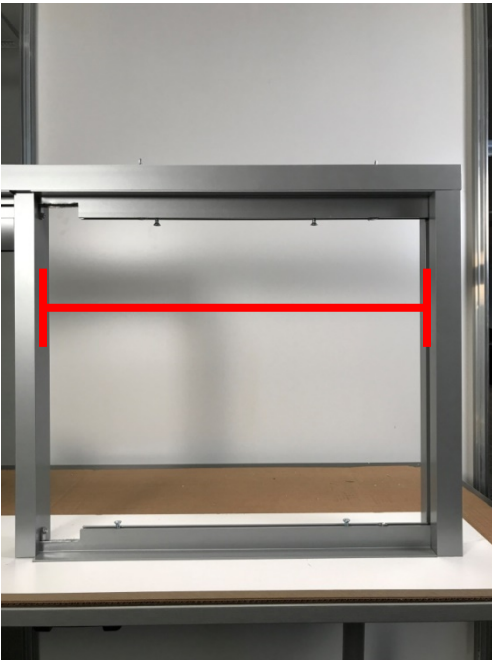


Use a quick clamp to assist with lining up and holding the View Guide to the Wall-Start. When attaching make sure View Guide is flush with the Wall-Start.

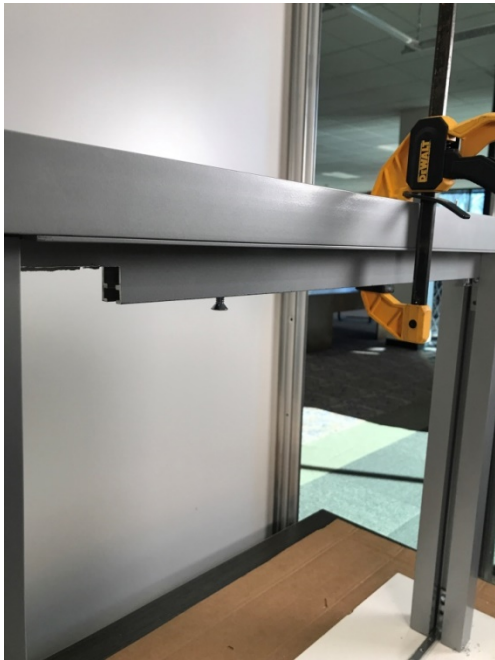


Attach the View Guide to the Wall-Start using 2 ½" screws. Install the leveling screws. The View Track will be installed once all of the Guide is installed.

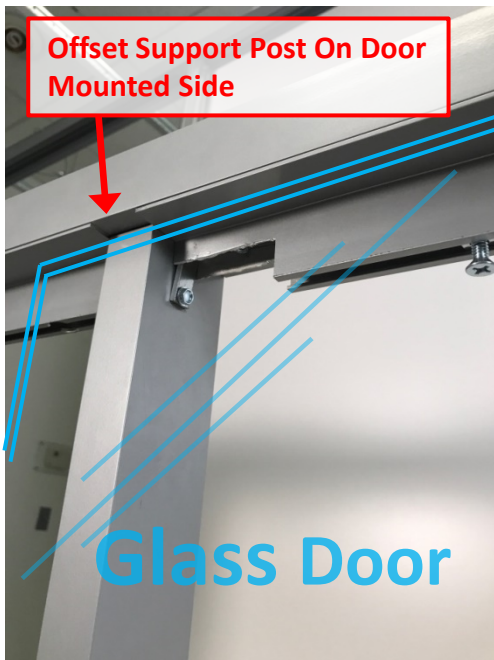
IMPORTANT: The finished door opening must be 38" from the face of the Finish Cover to the face of the 1" x 2" Support Post. Ensure the opening is plumb and square prior to anchoring the door opening. For Freestanding View the width of the glass door will be 45".



Mockup the Support Post to take the top Track and Guide Measurement. Measure from the Support Post to the face of the vertical Wall-Start. Cut the Track and Guide together.



Prep the Guide as shown on page 6. Make sure the notched end is against the Support Post. Align the Guide with the Wall-Start and attach.



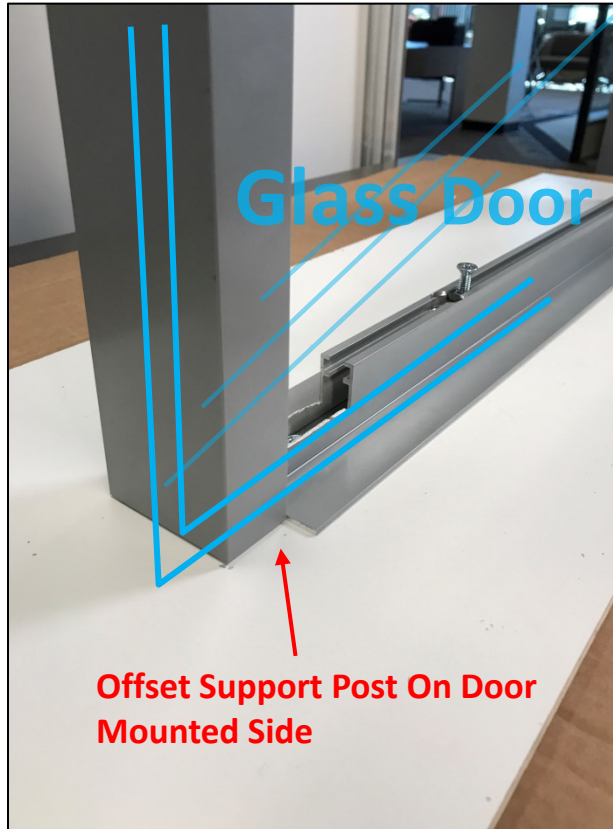
Attach the Support Post to the Guide using the Cut off L-Bracket. **Make sure to offset the Support Post on the door mounted side.**



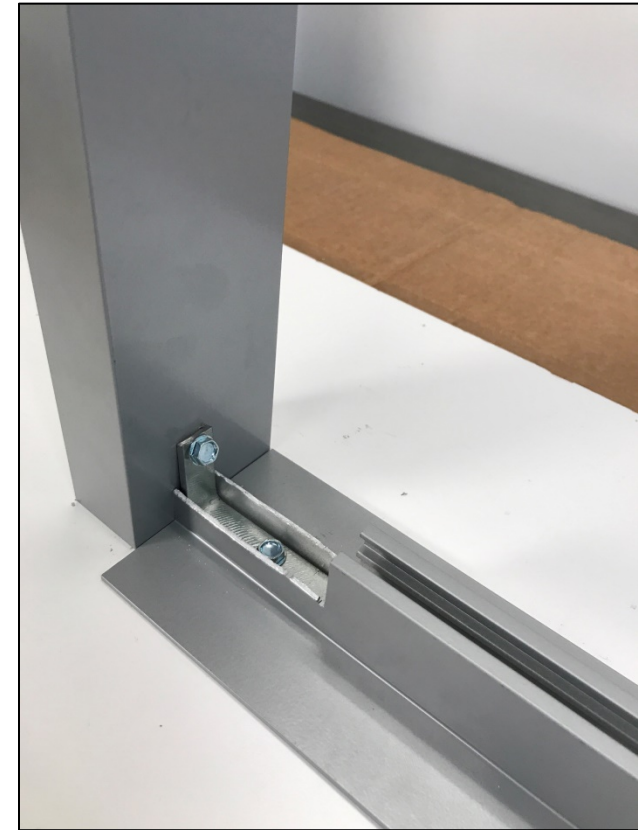
Flush the Support Post to the horizontal Wall-Start on the non-door mounted side. Install the leveling screws into the Guide.



With the top Guide in place plumb and square the Support Post to take the floor Track and Guide measurement. Cut the Track and Guide together.



Again, prep the Guide as shown on page 6. Make sure the notched end is against the Support Post. **Make sure to offset the Support Post on the door mounted side.** Attach the guide to the floor.



Attach the Support Post to the Guide using the Cut off L-Bracket. Attach the guide to the floor. Use one of the holes of the L-Bracket as an attaching hole. Then, install the leveling screws.



After the View Guide is in place the View Track (Arrowhead) can be installed. To prep the View Track drill a 1/4" hole at each attaching location. This will help when installing the 4" attaching screws.



Set the leveling screws to make a 3/8" air gap between the View Guide and View Track.

Important: Must have the minimum 3/8" air gap between View Guide and View Track.

Make sure the View Track on each side of the Support Post are level to each other. If they are not level to each other the door will not slide properly. Once the View Track is in place use 4" screws to attach the View Track to the View Guide.



Adjust the leveling screws in the floor Guide.

Make sure to start at a minimum 3/8" air gap.

Once level, install the View Track. The View Track does not need to be attached the View Guide. The Guide will sit on the leveling screws.