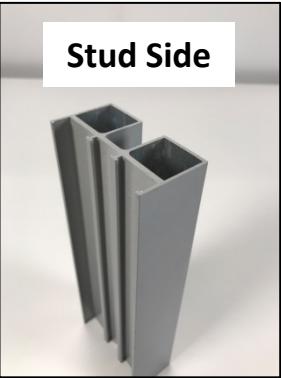




# View Series

## Swing Door Installation

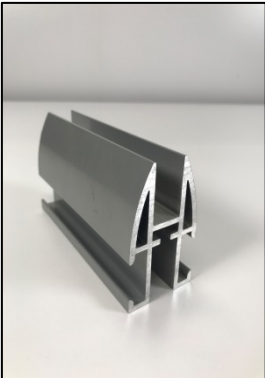
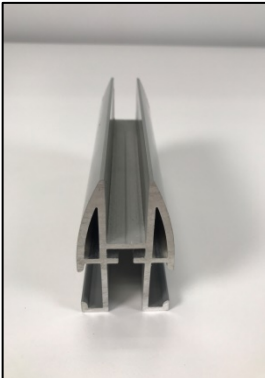
Materials:



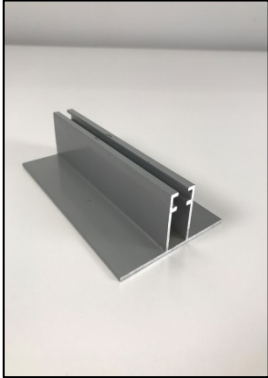
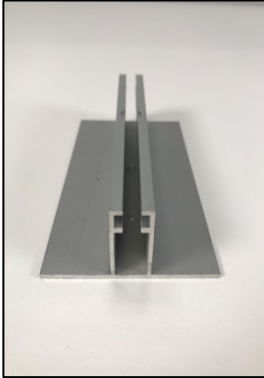
Stud Side



Glass Side



View Track (Arrowhead)



View Guide

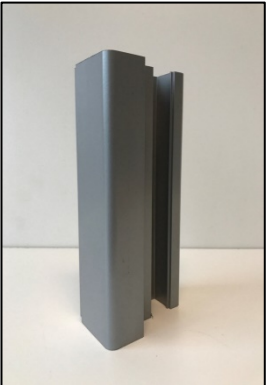
View Wall-Start



Flex Post



Leveling Bolts



Door Jamb



Flex Track



View L-Bracket



Flex L-Bracket



T-Bracket

Recommended Bits:



# View Series Swing Door Installation



## **Screw Guide:**

$\frac{3}{4}$ " - Flex L-Bracket and T-Bracket

1  $\frac{1}{4}$ " - Door Jambs to Wall-Starts

2  $\frac{1}{2}$ " - Door Header to Flex Track

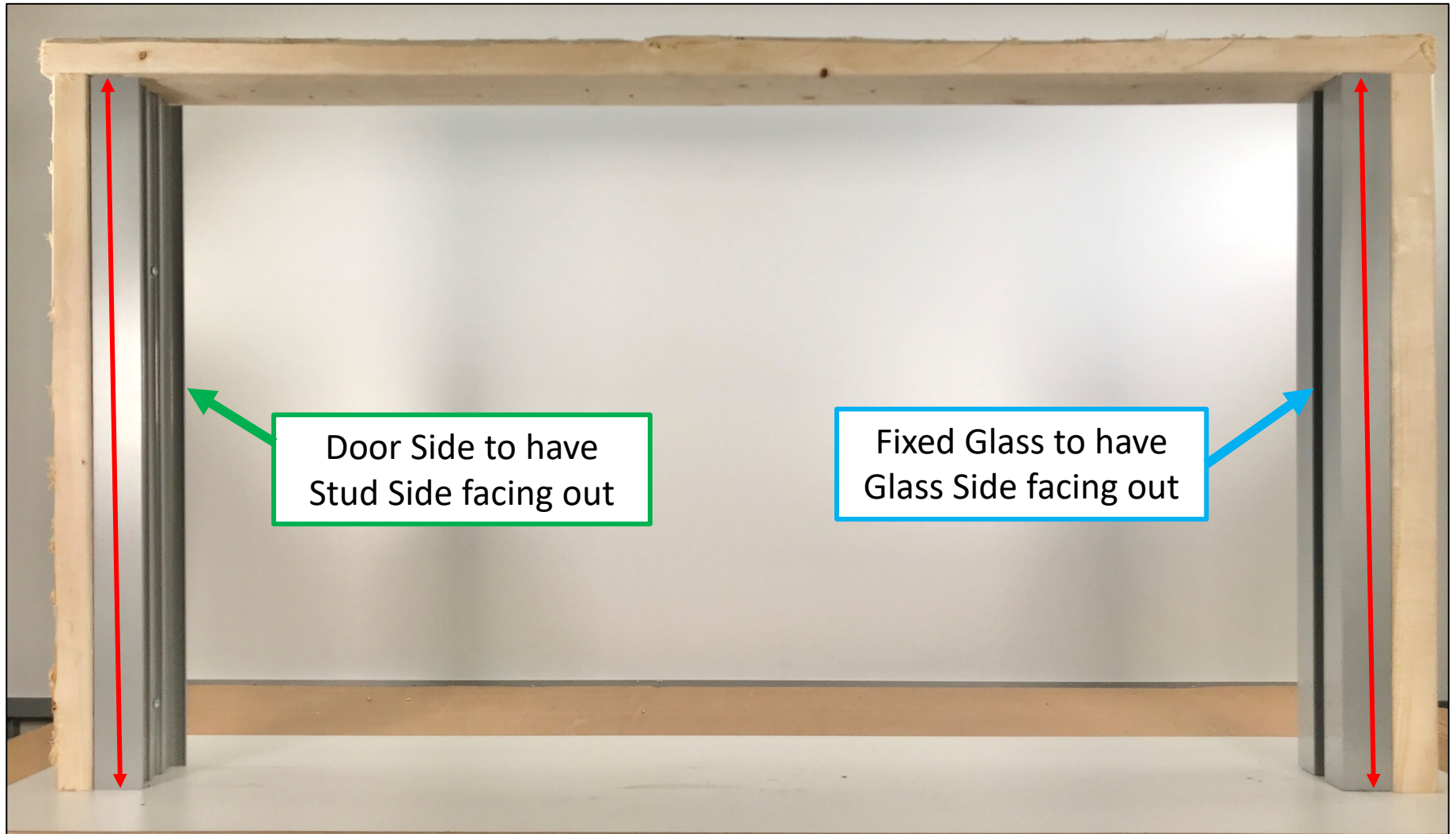
4" - View Track to View Guide Screws

***Wall/Ceiling/Floor Attaching (Not Provided)***



# View Series Swing Door Installation

## Wall-Start Installation:

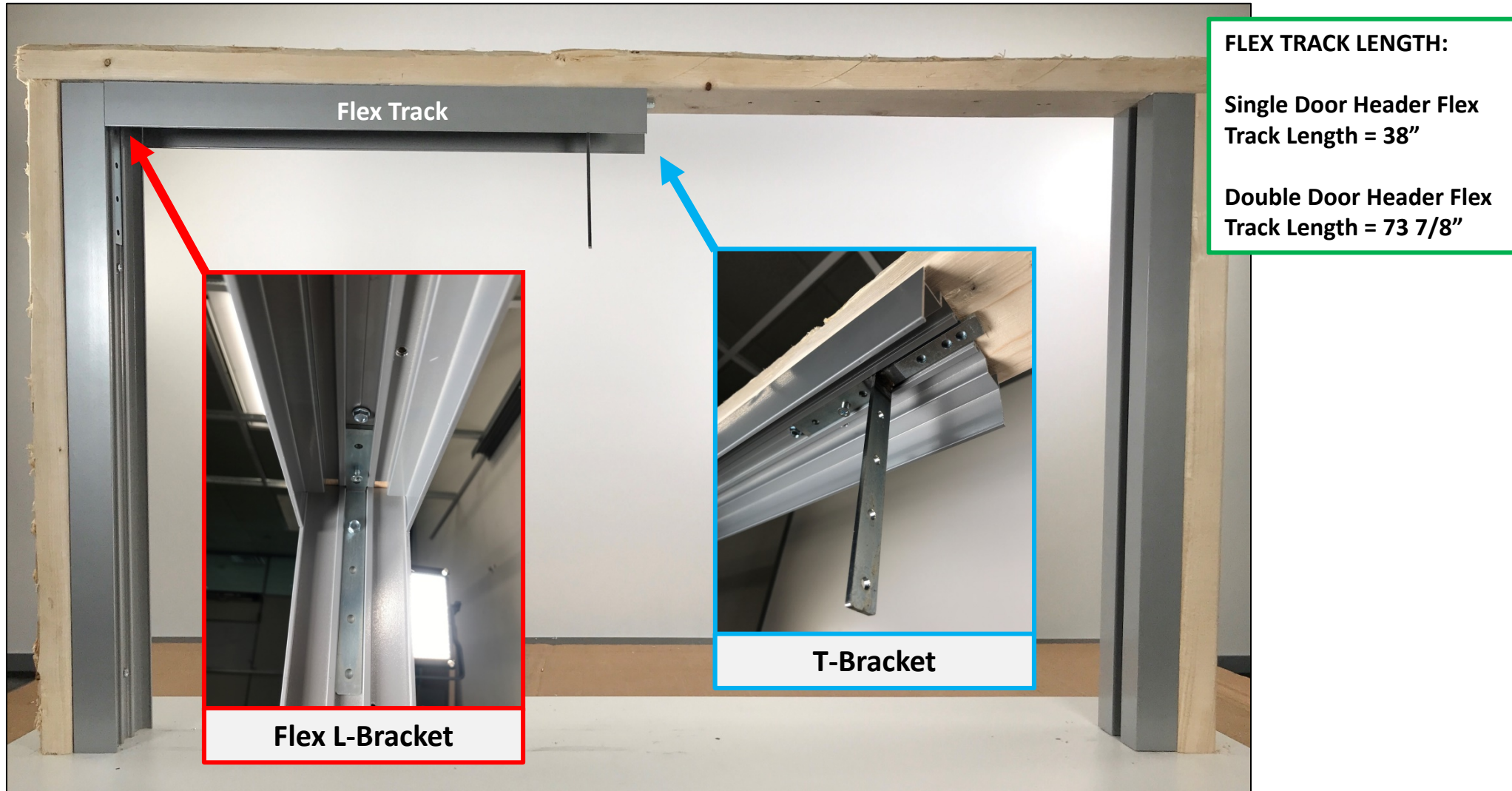


When framing for **View Series Swing Door** the **View Wall-Starts** will be installed first onto the existing walls or Flex Post(s). The measurement for the Wall-Starts will be taken from floor to ceiling. Attach the Wall-Start to the existing wall or Post. Make sure to have the correct orientation of the Wall-Start as shown above. The Stud Side of the Wall-Start is designed to accept the Door Jambs. Check for plumb and adjust if necessary.

**IMPORTANT: Make sure the door opening framing is plumb and square. If it is not the door will not function properly.**

# View Series Swing Door Installation

## Flex Track Installation:

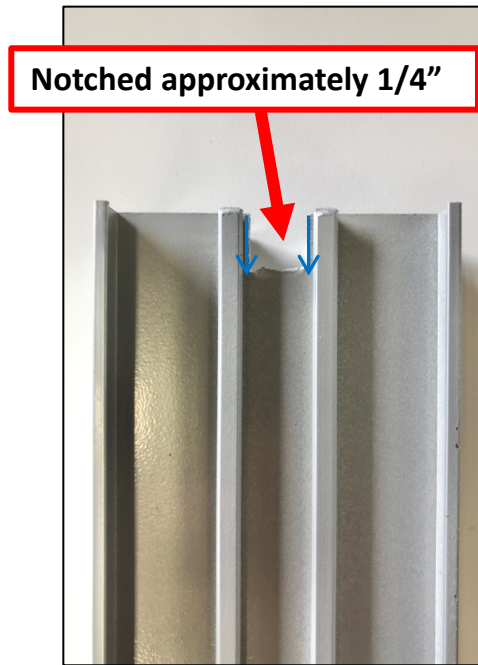


The Flex Track will be installed on the ceiling on the door opening side. Check the length of the Flex Track per the measurements noted above. Flex L-Bracket(s) are used on the post/wall mounted side. T-Bracket(s) are used when transitioning from the Flex Track to the View Guide. Prior to attaching the Flex Track slide in the correct brackets. Once in place, attach the Flex Track to the ceiling.



# View Series Swing Door Installation

## Wall-Start Prep/Installation:

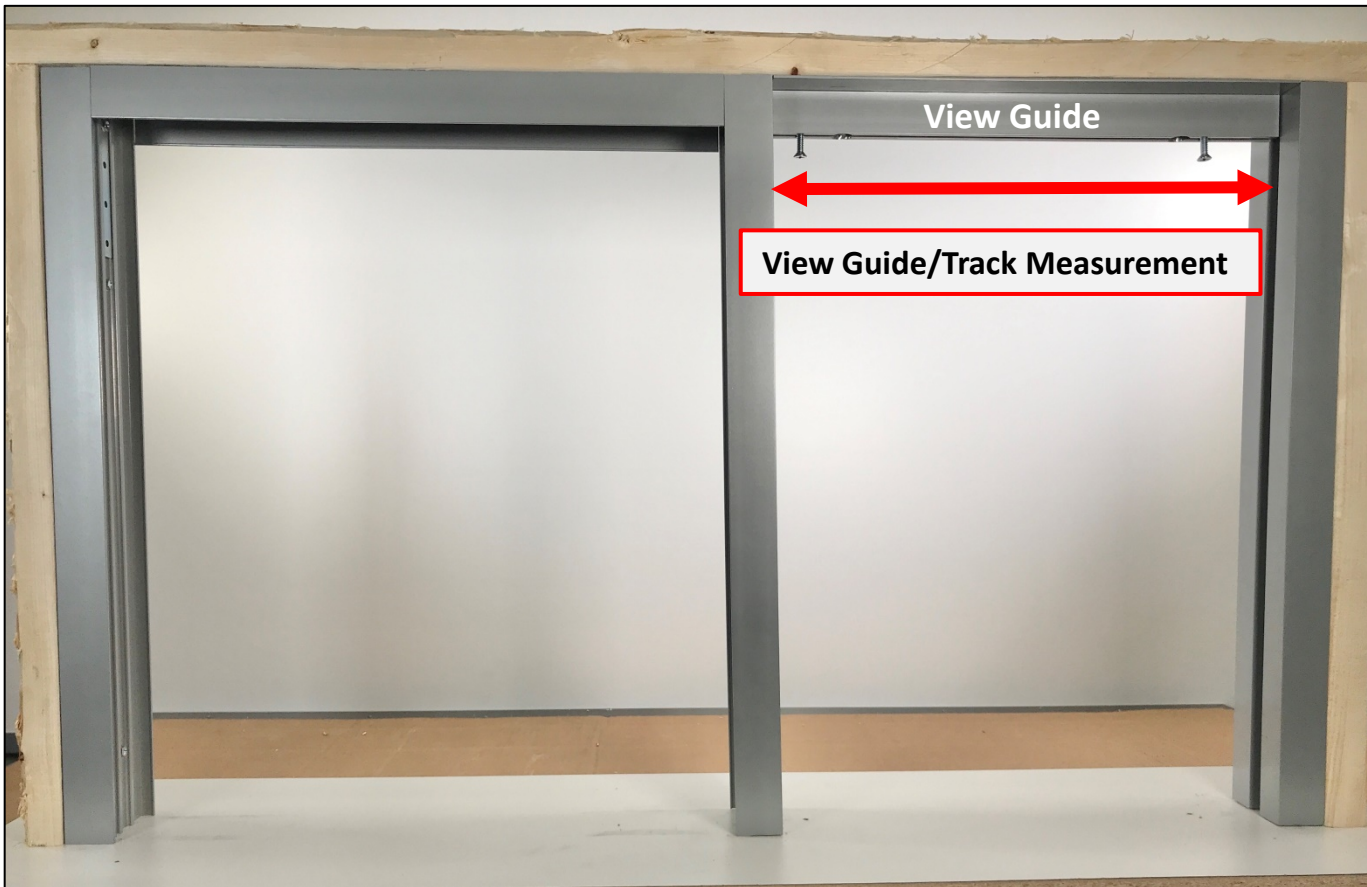


Wall-Start Prep: The Wall-Start will need to be notched at the top to allow the T-Bracket to slide into the View Guide. To notch the Wall-Start use a hack saw to make two vertical cuts shown at the location above (blue arrows). Break off the piece of aluminum with pliers.

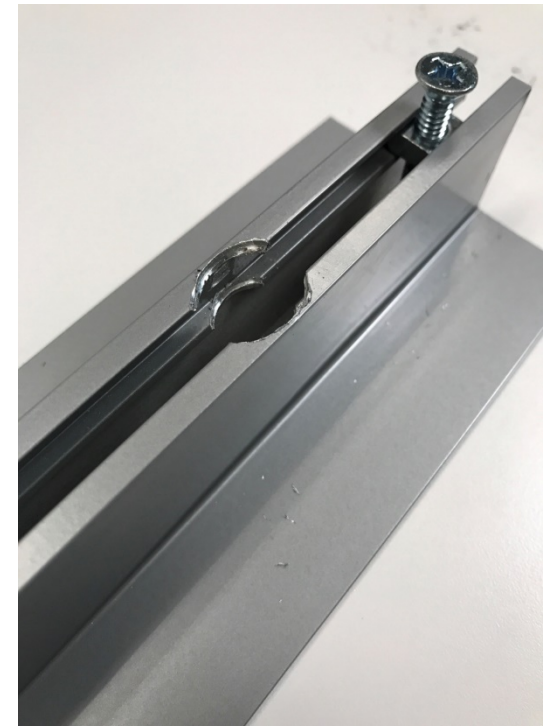
Once the Wall-Start is prepped, mock the Wall-Start in place. Do not attach the T-Bracket to the Wall-Start.

# View Series Swing Door Installation

## Ceiling View Guide Prep/Installation:



Once the Wall-Start is in place the ceiling View Track/Guide can be measured. The **View Guide** and **View Track (Arrowhead)** will be the same length and can be cut together. To measure for the View Guide/Track, measure from Wall-Start to Wall-Start (shown by the red arrow above). Prep and attach the View Guide. The View Guide will butt directly into each Wall-Start as shown above.

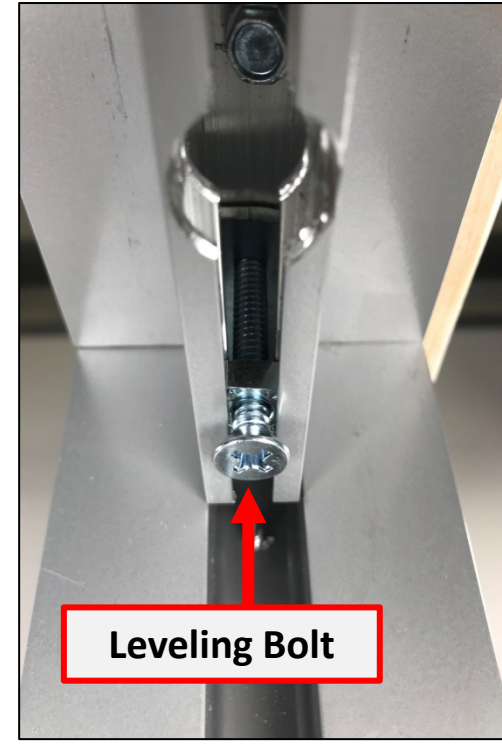
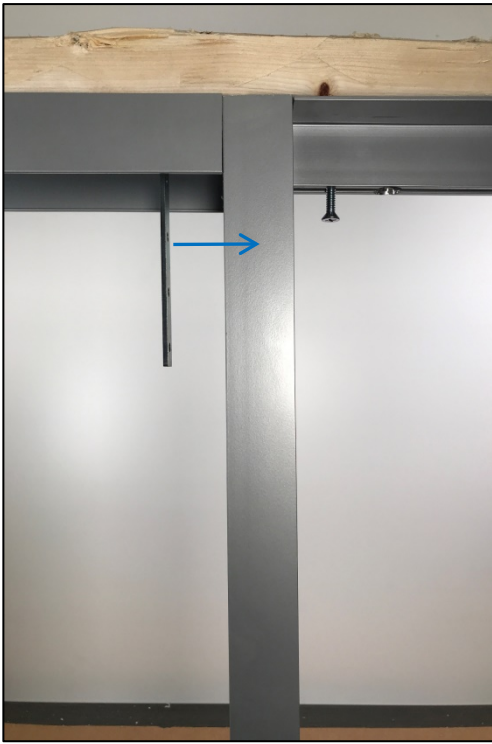


**View Guide Prep:** Using a step drill bit, drill holes through top of the Guide. This allows the hex head bit to fit into the Guide for the attaching screws. Install Leveling Bolts approximately every 3 feet.



# View Series Swing Door Installation

## View Guide/T-Bracket Installation:



Once the View Guide is attached to ceiling the **T-Bracket** can be slid into View Guide. Note: The bracket may need to be slightly bent down so it does not catch the View Guide when slid into place.

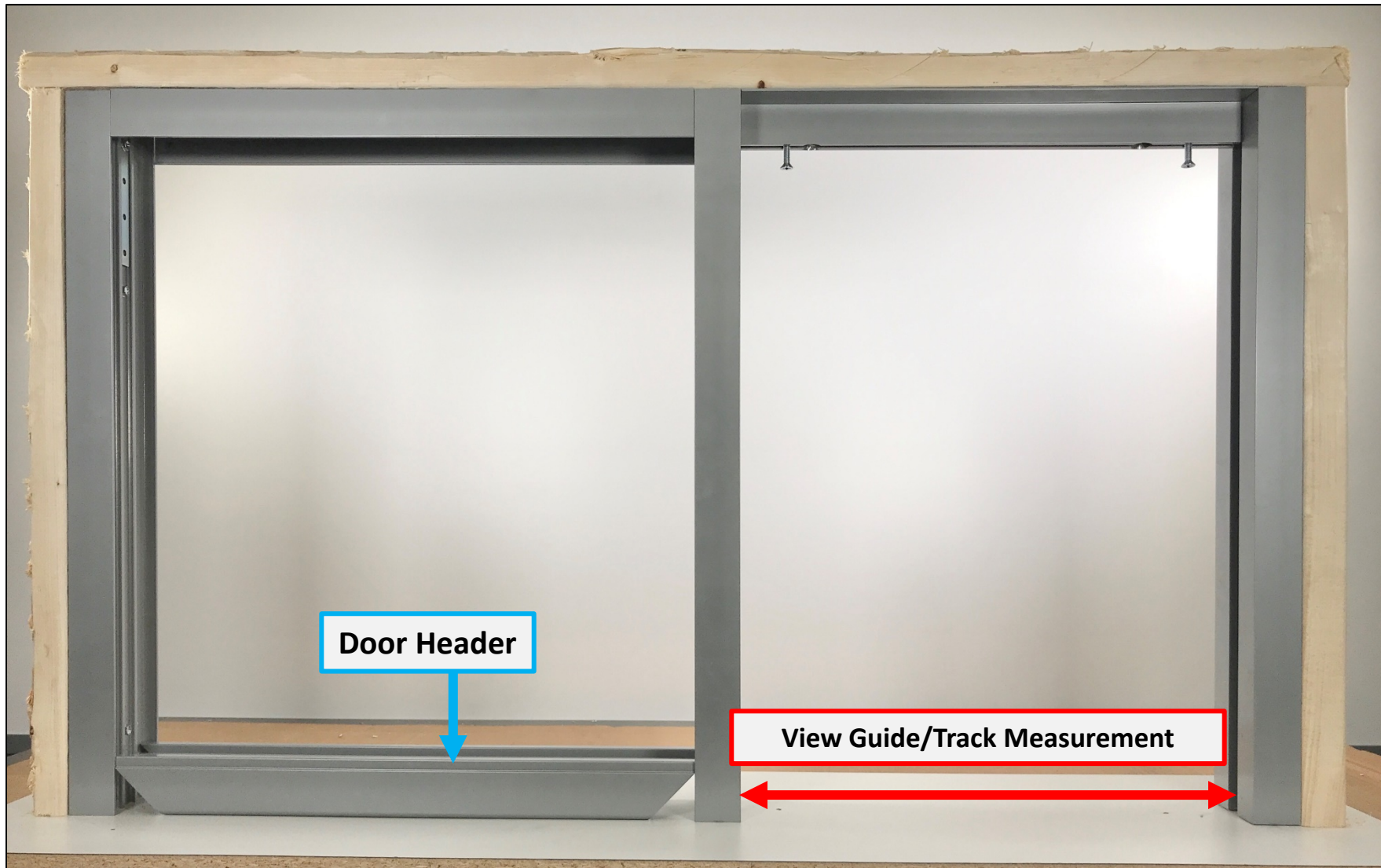
Once the T-Bracket is in place, attach the T-Bracket to the Wall-Start using a  $\frac{3}{4}$ " screw. **Important: Only use the top hole of the bracket as shown above.** If any of the other holes are used the glass will strike the screw and potentially break.

Once the T-Bracket is attached set the View L-Bracket side in place using a Leveling Bolt. Tighten the bolt until the T-Bracket is tight to the View Guide as shown above.



# View Series Swing Door Installation

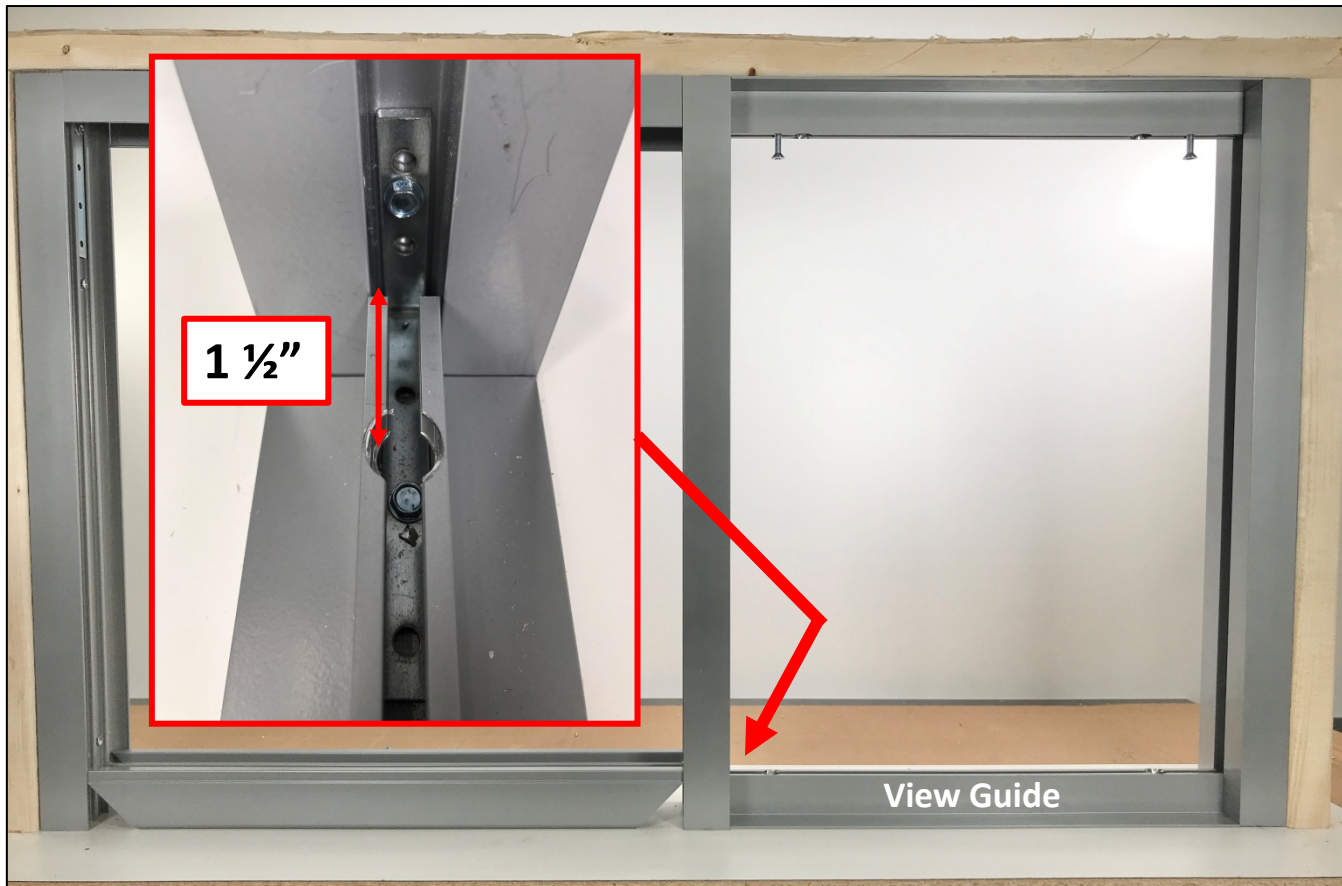
## Floor View Guide Prep/Installation:



Next, take the measurement for the floor View Guide/Track. Place the Door Header on the floor in the orientation shown above. This will also ensure the spacing for the door opening. Make sure the opening is plumb and square. The View Guide/Track will be the same length and can be cut together. To measure for the View Guide/Track, measure from Wall-Start to Wall-Start. The View Guide will butt directly into each Wall-Start.

# View Series Swing Door Installation

## Floor View Guide Prep/Installation:



At the door opening a View L-Bracket will need to be installed to connect the Wall-Start to the View Guide. The bracket is also needed to support the opening/closing of the door.

When prepping the View Guide, measure 1 1/2" from the end of the View Guide for the hole location. This will allow the floor attaching screw to line up with a hole on the L-Bracket. Install the bracket in the orientation shown above. Attach the bracket to both the floor and the Wall-Start.

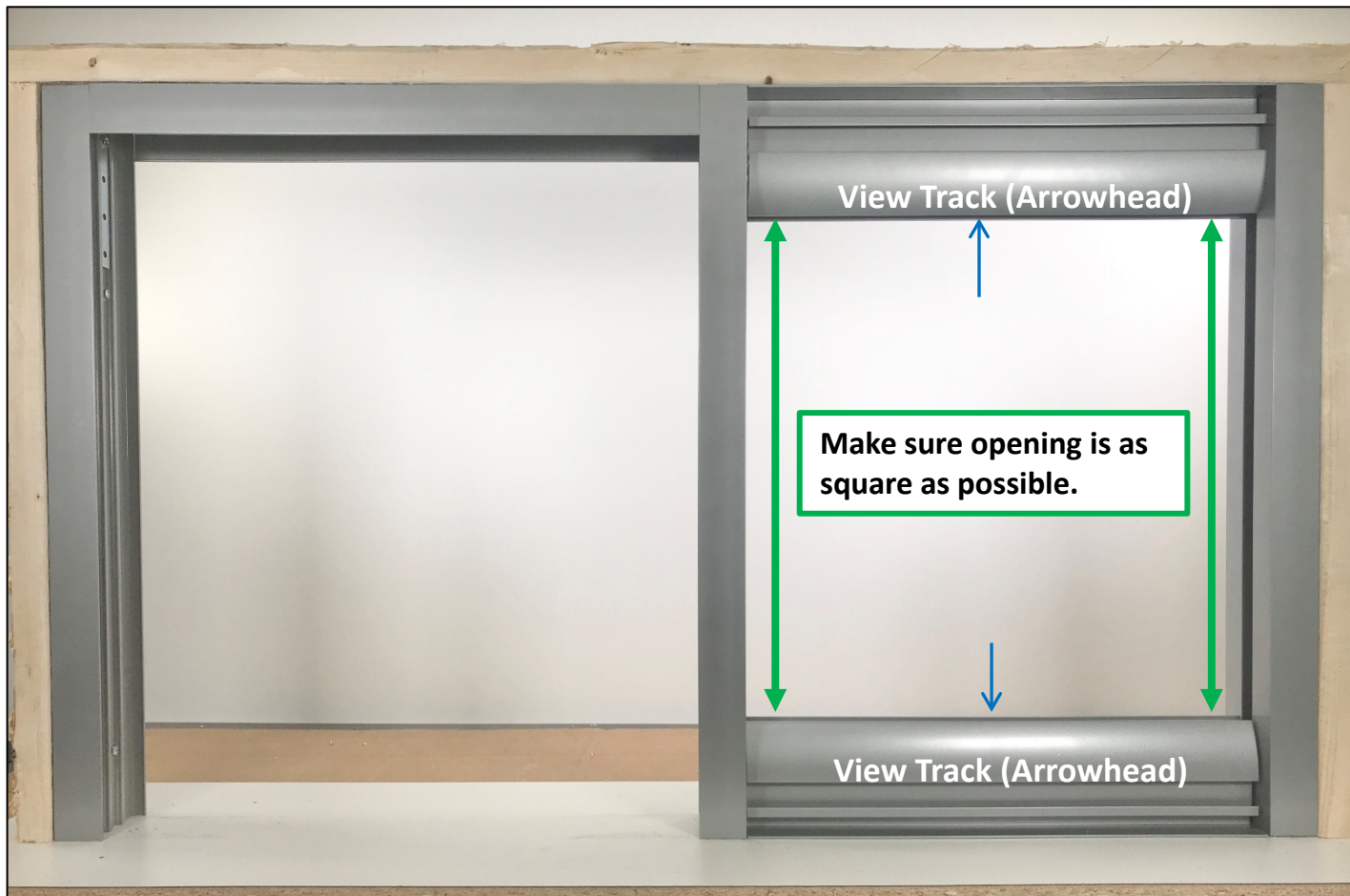


**View Guide Prep:** Using a step drill bit, drill holes through top of the Guide. This allows the hex head bit to fit into the Guide for the attaching screws. Install Leveling Bolts approximately every 3 feet.



# View Series Swing Door Installation

## Floor & Ceiling View Track Prep/Installation:



**Top Track Only:** To prep the View Track drill a 1/4" hole at each attaching point.

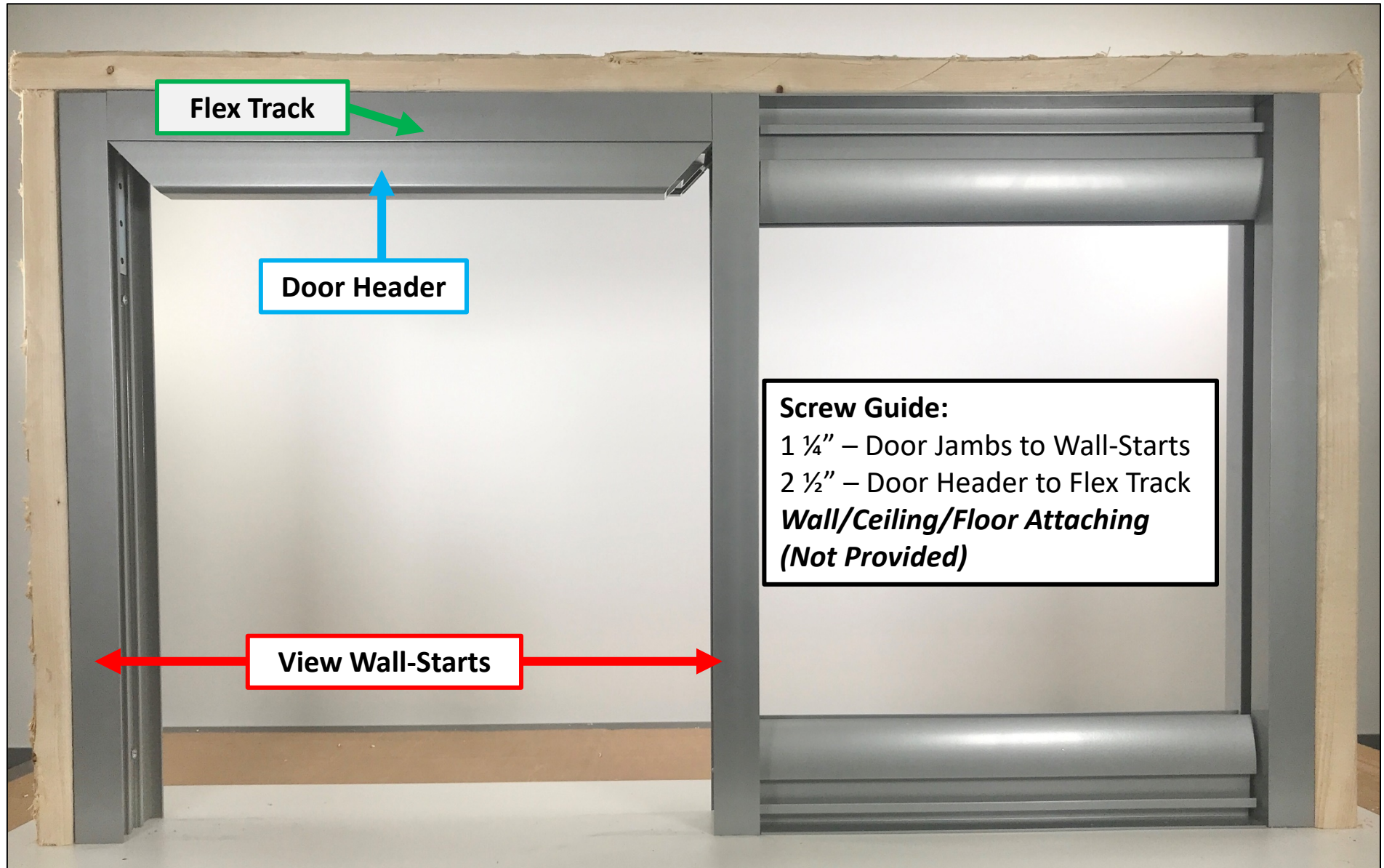
Next, place the View Track (Arrowhead) over the View Guides. Using a laser level, adjust Leveling Bolts across the entire opening at the floor and the ceiling to ensure the View Track is 100% level once it is installed. For the ceiling, prep the View Track (Arrowhead) for installation. Attach the View Track to the View Guide using 4" screws. The View Track on the floor will sit on the View Guide, it does not need to be attached. Once the floor and ceiling Track is in place, check to make sure the Track is 100% level.

**Must have a minimum air gap of 3/8" between View Guide and View Track (Arrowhead) at the floor and ceiling. This gap could be on either end of the wall depending on the floor/ceiling variation.**



# View Series Swing Door Installation

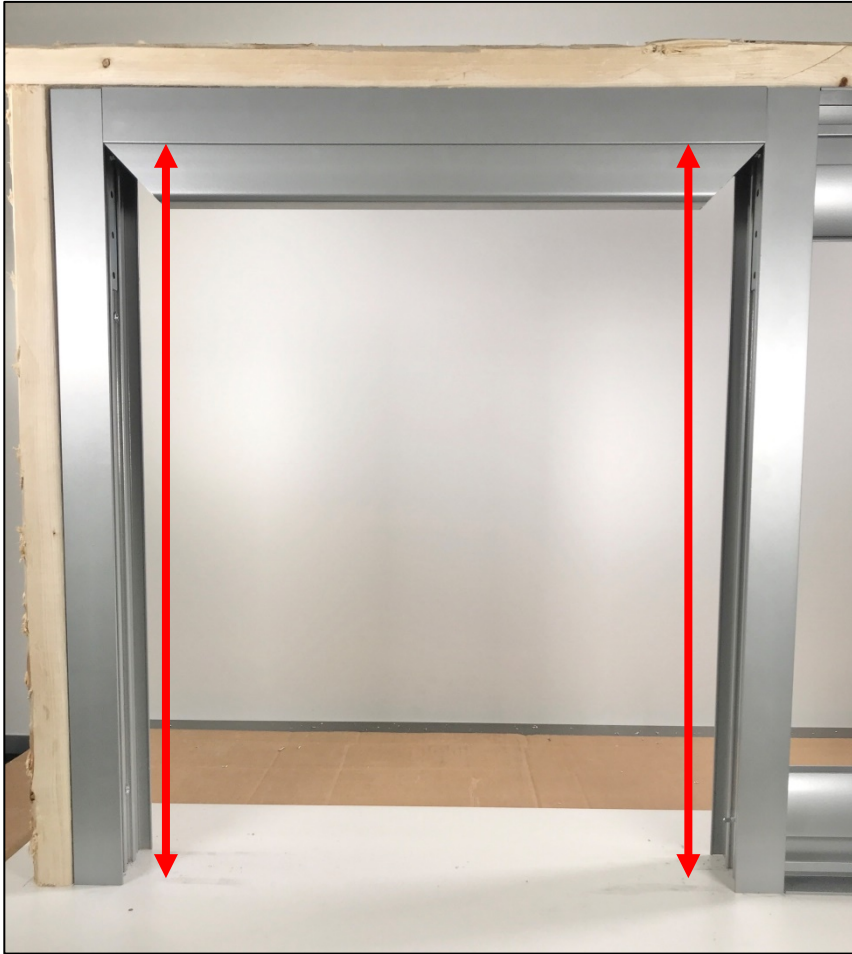
## Door Frame Installation:



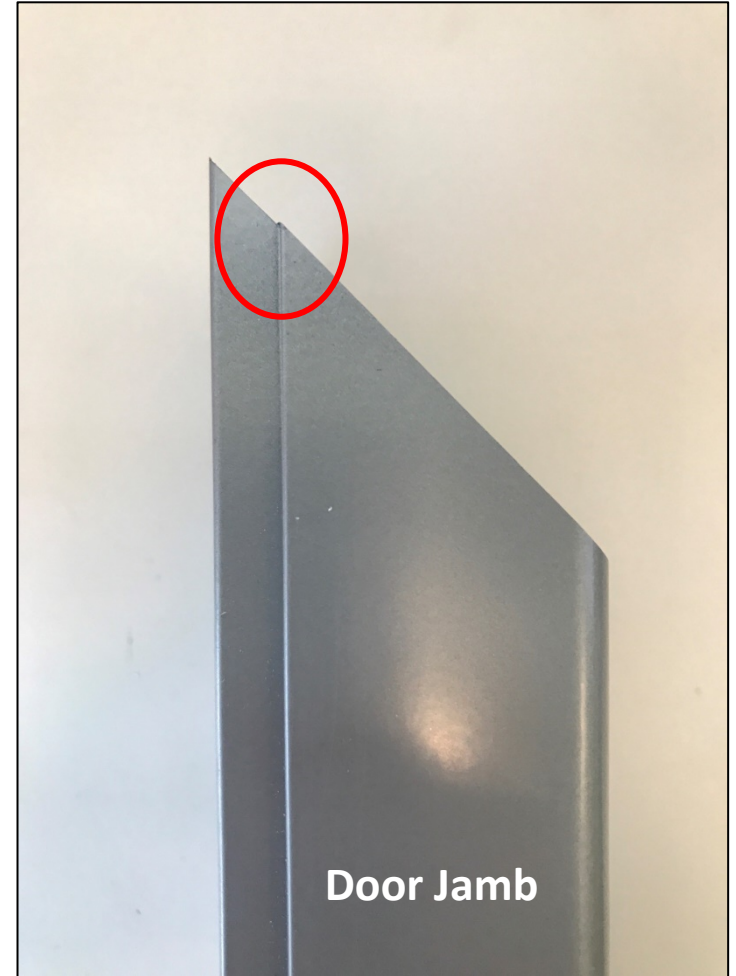
Prior to framing the door opening it is important ensure the opening is plumb and square. Make sure the Wall-Starts are in the correct orientation with the Stud Side facing into the door opening. When framing the door opening, first start with the Door Header. The Door Header will be installed into Flex Track. Attach the Door Header to the Flex Track using 2 ½" screws.

# View Series Swing Door Installation

## Door Frame Installation:



To measure the height of the Door Jambs measure from the finished floor to the bottom of the Flex Track. Door Jambs for Full Height doors come in 10' lengths.

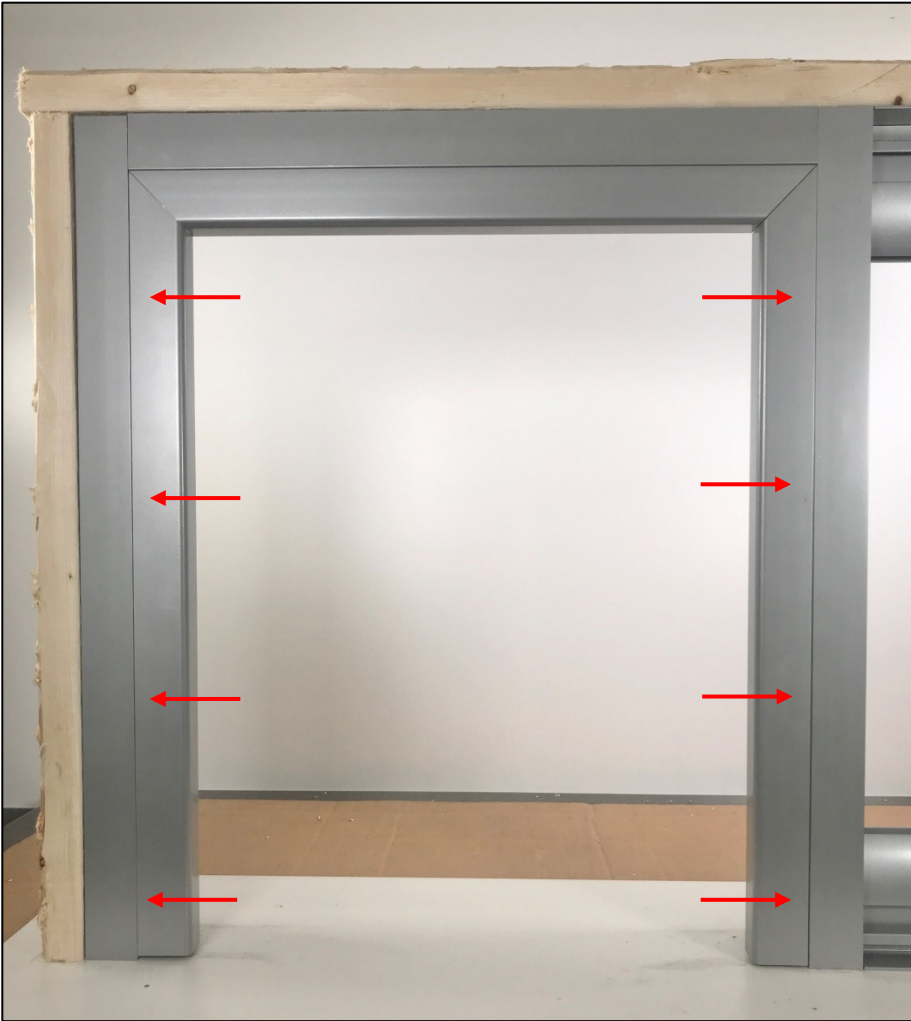


To measure and cut the length of the Door Jambs, measure down from the point indicated above on the mitered end.



# View Series Swing Door Installation

## Door Frame Installation:



Use a flat bar on the floor help tighten mitered ends of the Door Header and the Door Jambs. Once in place attach the Door Jambs to the Wall-Starts using 1 ¼" screws. Use 4 screws per jamb.



Above image depicts the screw attach location on the Door Jamb.



## View Series Swing Door Installation

View Series Swing Door (Finished Framing):



Completed framing for a View Series Swing Door. Glass measurements can now be taken per our glass measuring guide.