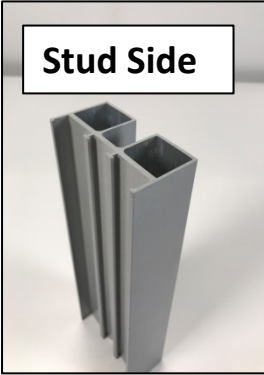




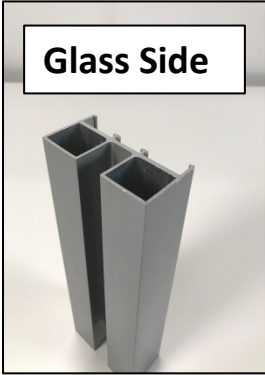
# View Series

## Sliding Door Installation (Bulkhead)

Materials:



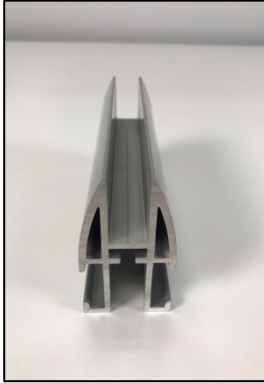
Stud Side



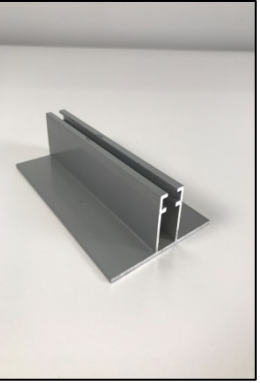
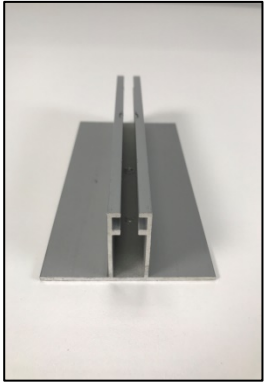
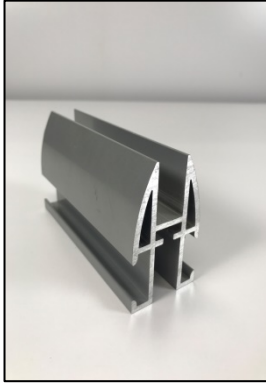
Glass Side



View Wall Start



View Track (Arrowhead)



View Guide



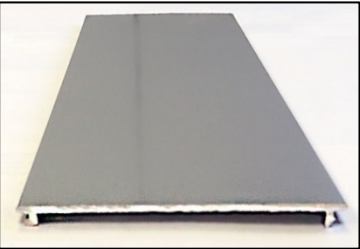
Flex Post



Leveling Bolts



View L-Bracket

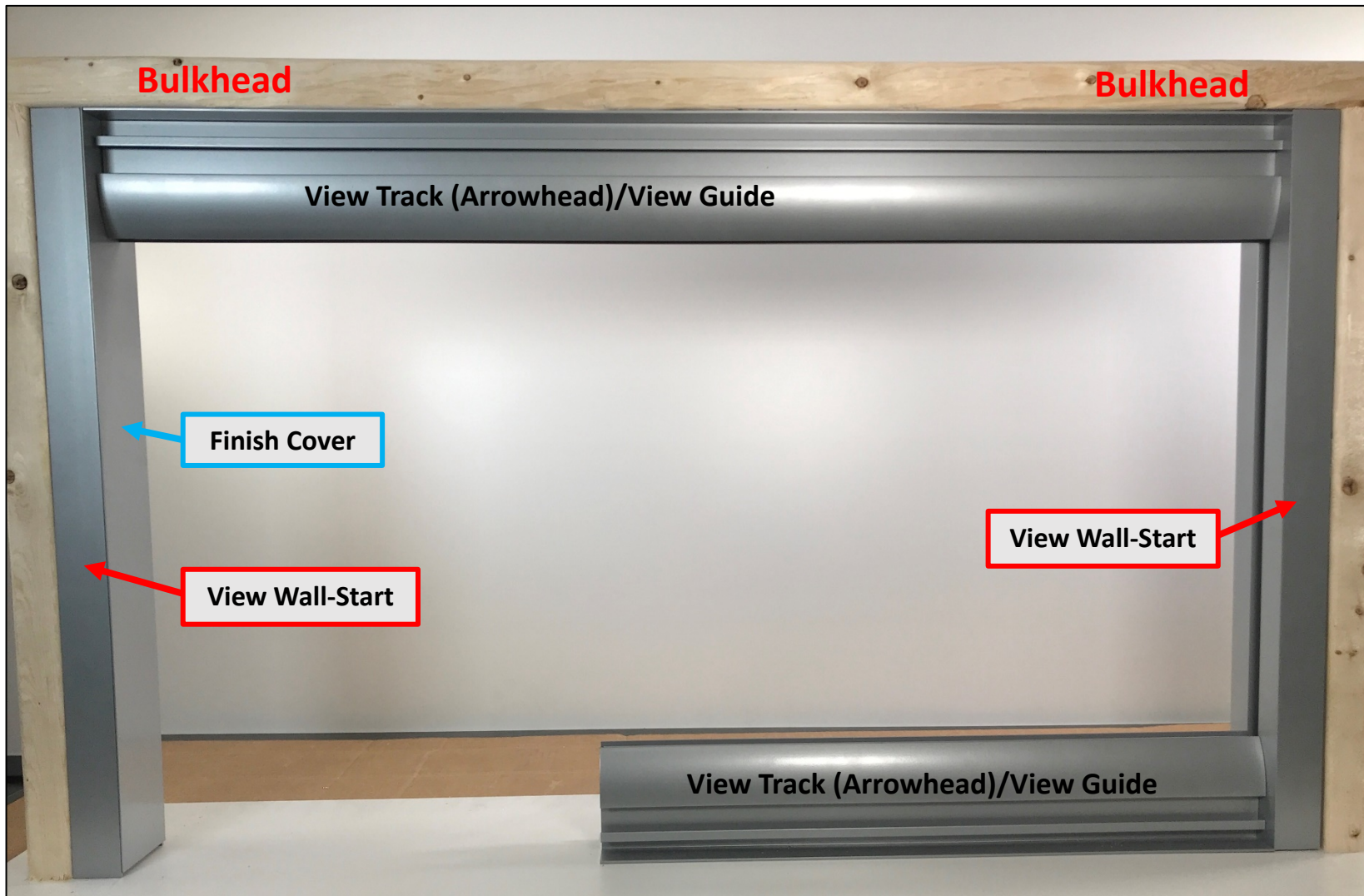


Finish Cover

Recommended Bits:



## View Series Sliding Door Bulkhead Attachment:

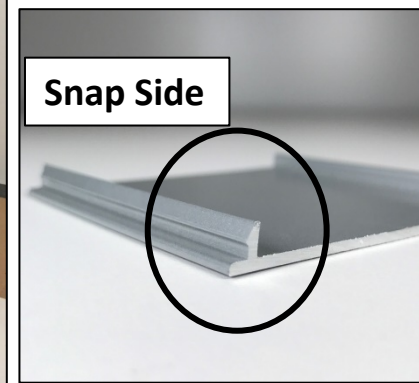
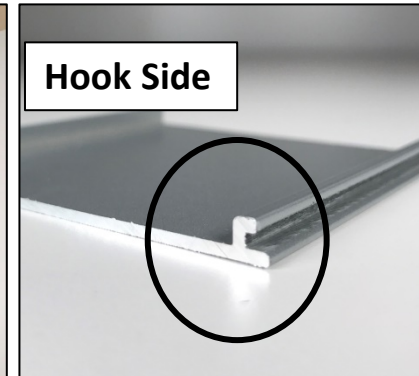
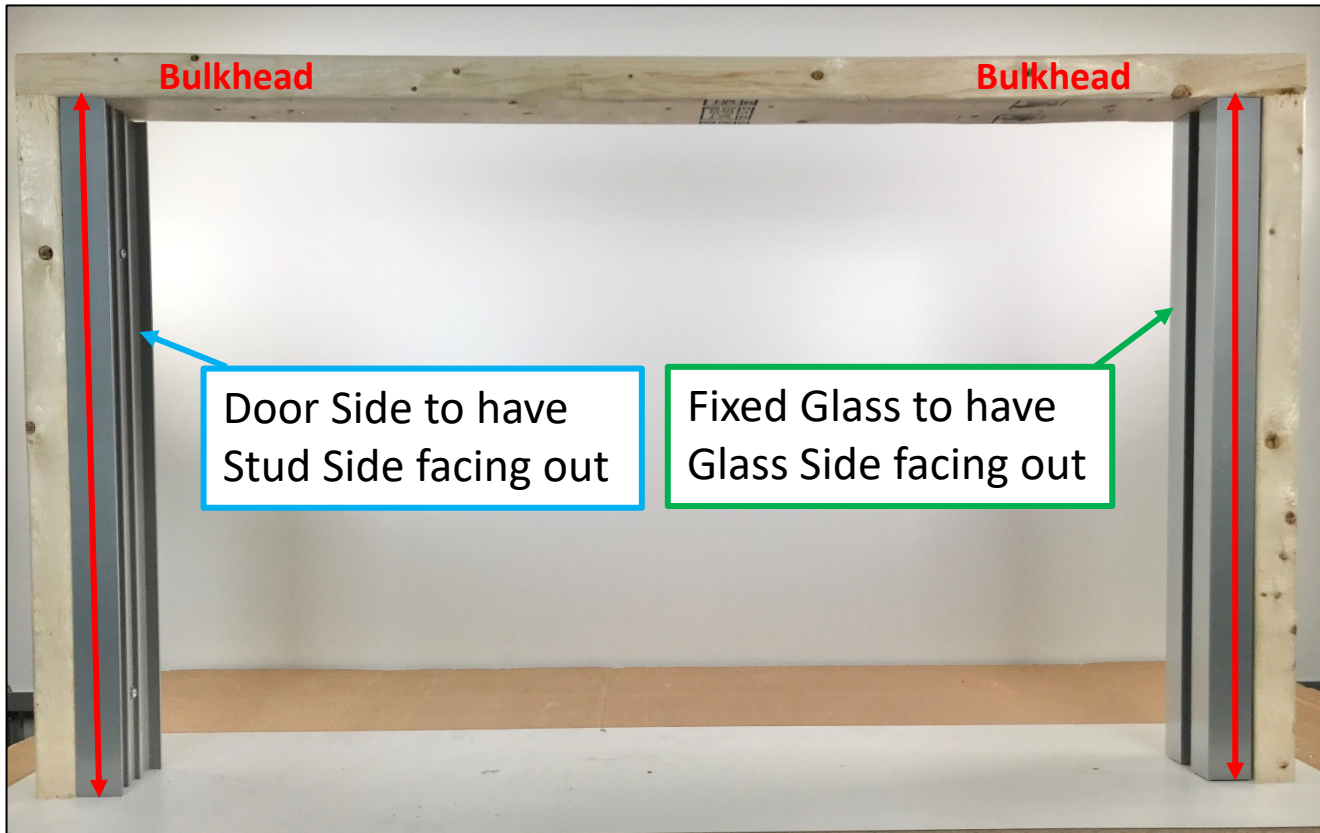


**Screw Guide:**  
4" – View Track to View  
Guide Screws  
*Wall/Ceiling/Floor  
Attaching (Not Provided)*

**\*\*IMPORTANT: Must have a minimum 3/8" air gap at the floor/ceiling between View Track (Arrowhead) and View Guide to allow room for a sliding door. If the gap is not installed the door will not function properly\*\***



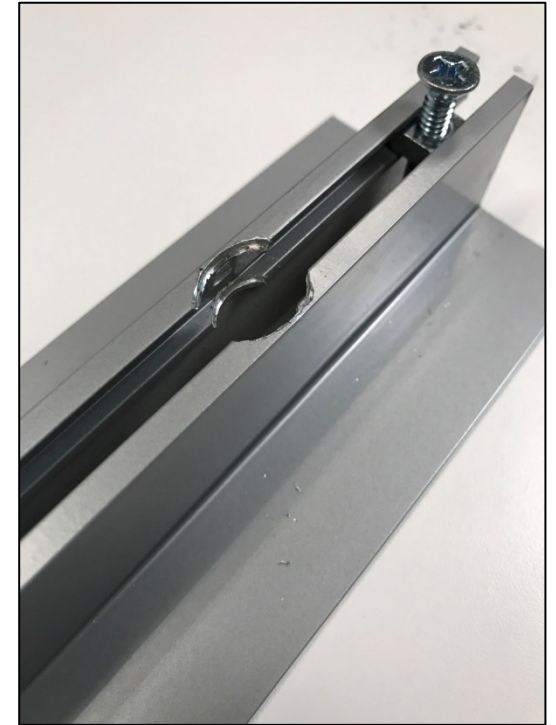
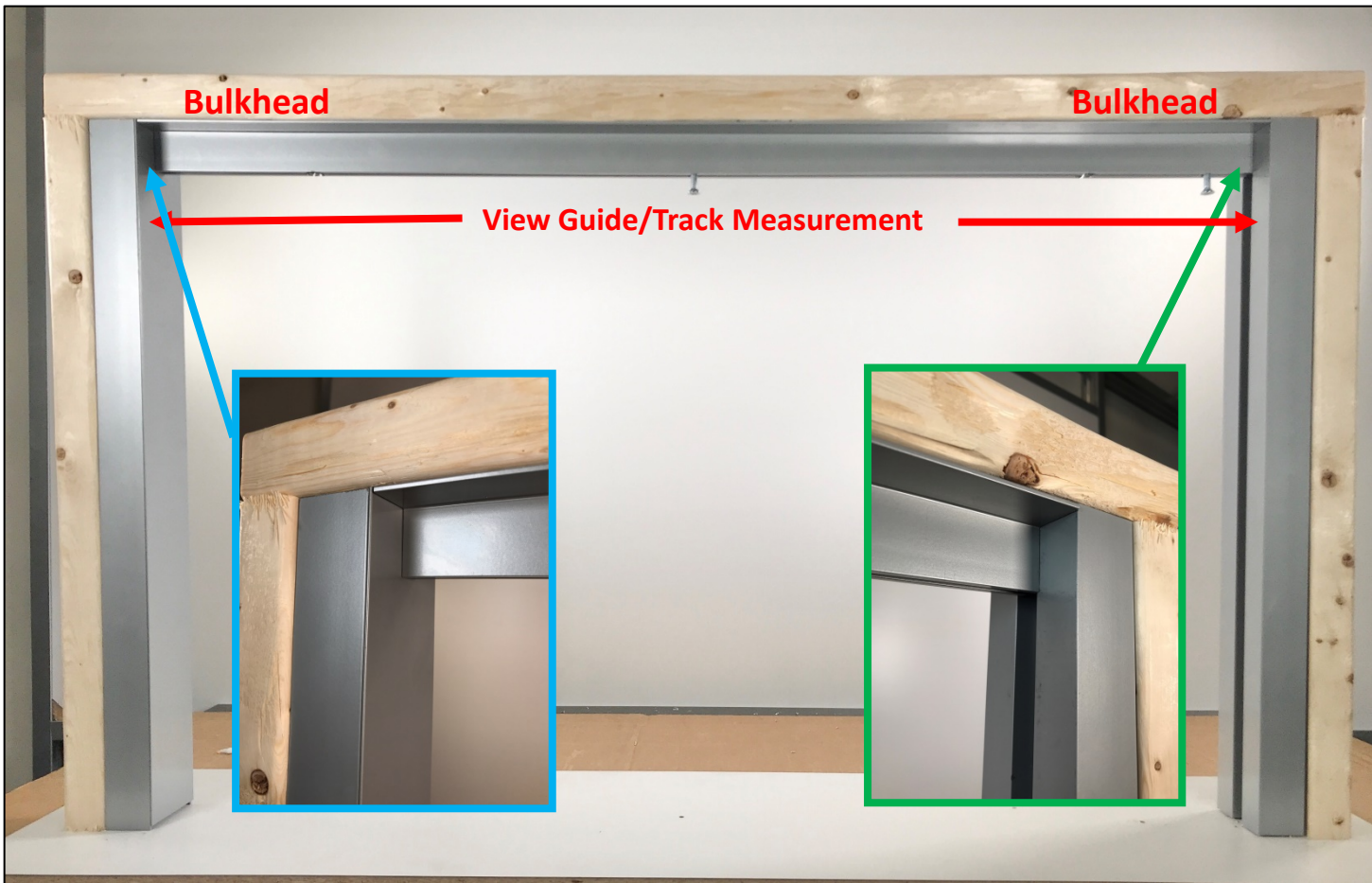
## View Series Sliding Door Bulkhead Attachment:



When framing for a **View Series Sliding Door** attaching to a **Bulkhead** the **View Wall Starts** will be installed first. The measurement for the Wall-Starts will be taken from floor to ceiling. Attach the Wall-Start to the existing wall. Make sure to have the correct orientation of the Wall-Start as shown above. Check for plumb and adjust if necessary.

Install the Finish Cover onto the Wall-Start to finish the opening. The Finish Covers will hook onto one side of the Wall-Start and snap into the opposite side.

## View Series Sliding Door Bulkhead Attachment:



The View Guide/Track will be the same length and can be cut together. To measure for the View Guide/Track, measure from the Finish Cover to the Wall-Start. Prep and attach the View Guide to the bulkhead. The View Guide will butt directly into the Finish Cover and Wall-Start as shown above.

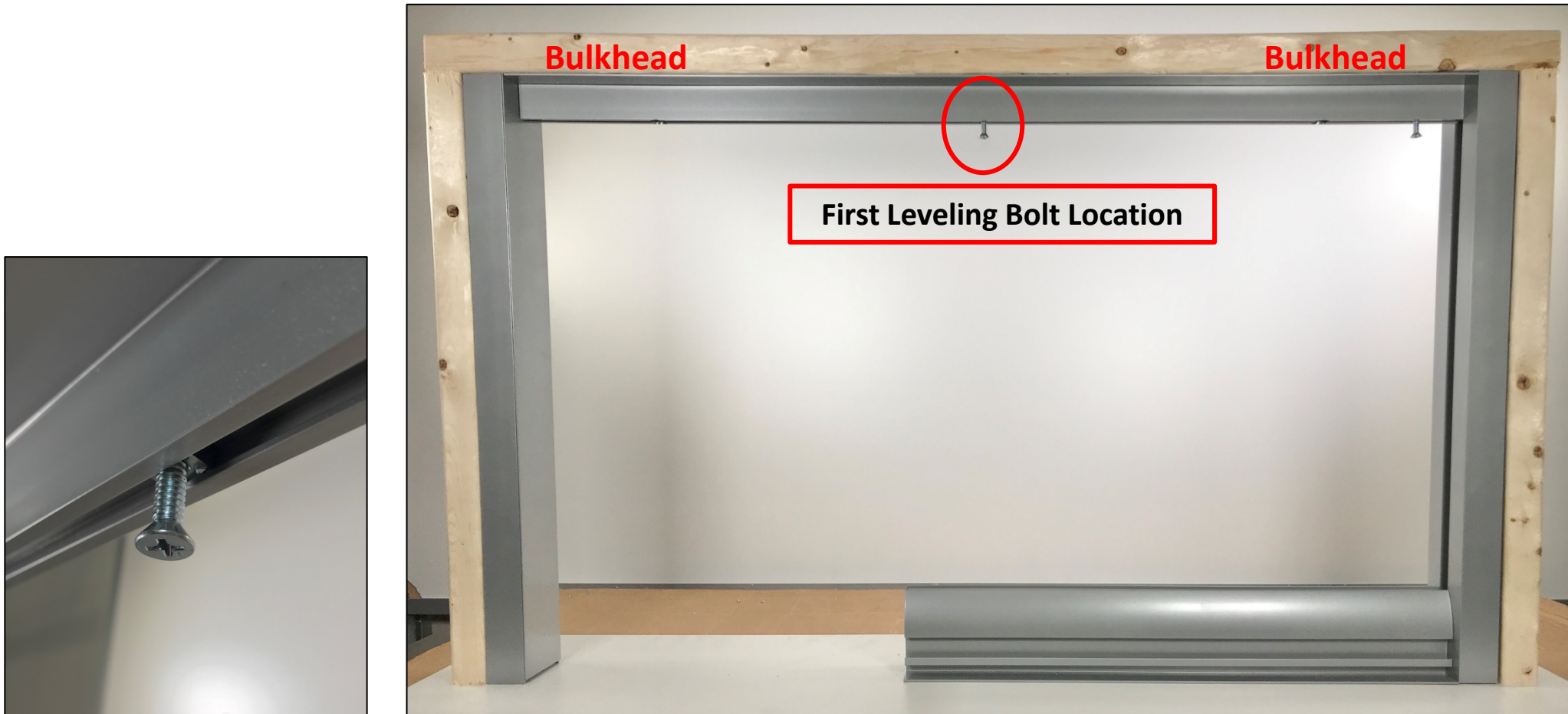
**\*NOTE:** View L-Brackets may not be needed when attaching to a Bulkhead. The Bulkhead should be strong enough to hold the weight of the door.

### View Guide Prep:

Using a step drill bit, drill holes through top of the Guide. This allows the hex head bit to fit into the Guide for the attaching screws. Install Leveling Bolts approximately every 3 feet.



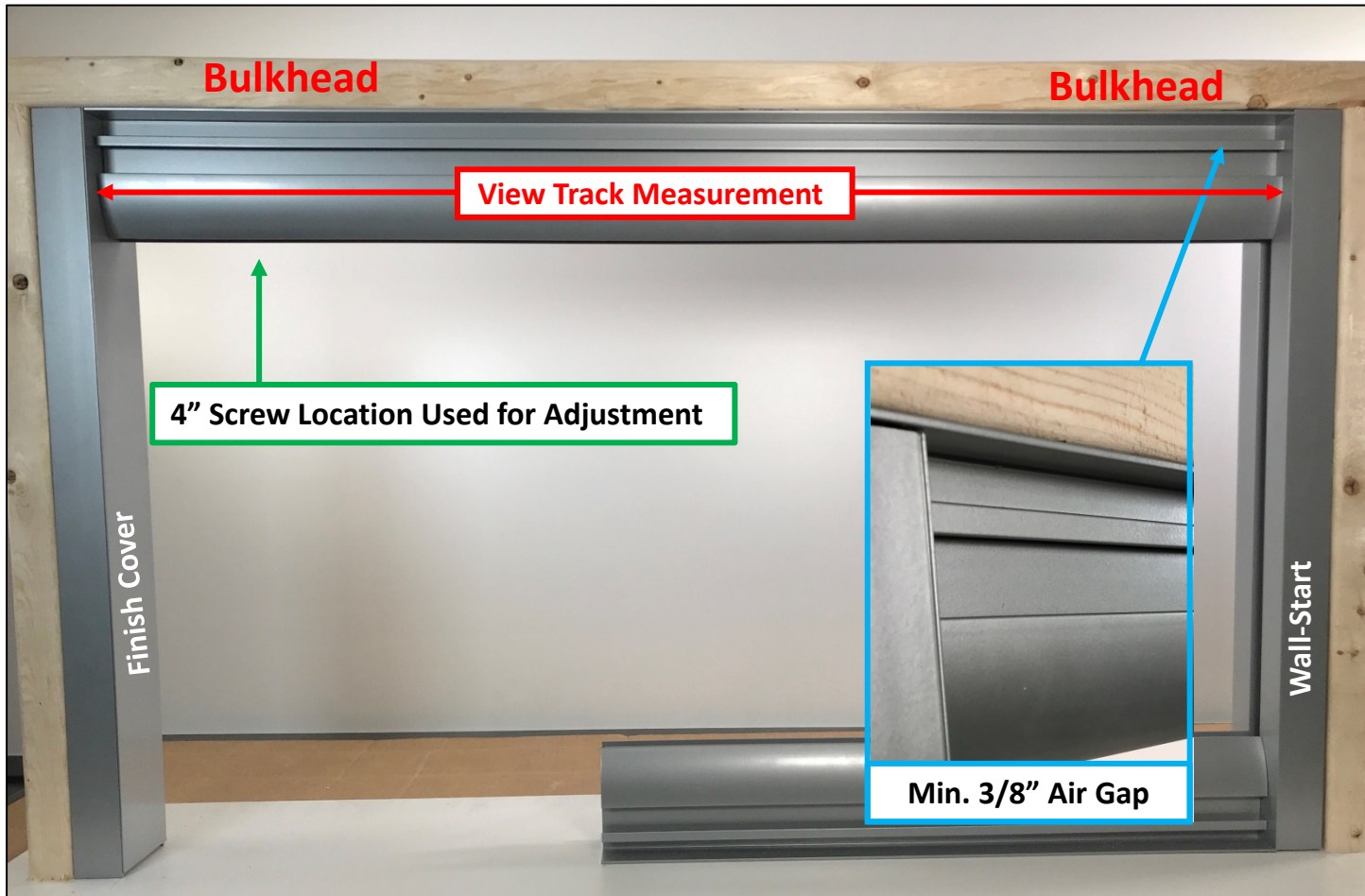
## View Series Sliding Door Bulkhead Attachment:



Using a laser level (or a regular level), adjust the Leveling Bolts across the entire opening to ensure the View Track (Arrowhead) is 100% level once it is installed. **Must have a minimum air gap of 3/8" between View Guide and View Track.** The Leveling Bolts allow up to 1 1/8" of adjustment.

**\*\*IMPORTANT: Do not place a Leveling Bolt within the door opening. The first leveling bolt will be placed slightly past the opening as shown above. See next page for explanation\*\***

## View Series Sliding Door Bulkhead Attachment:



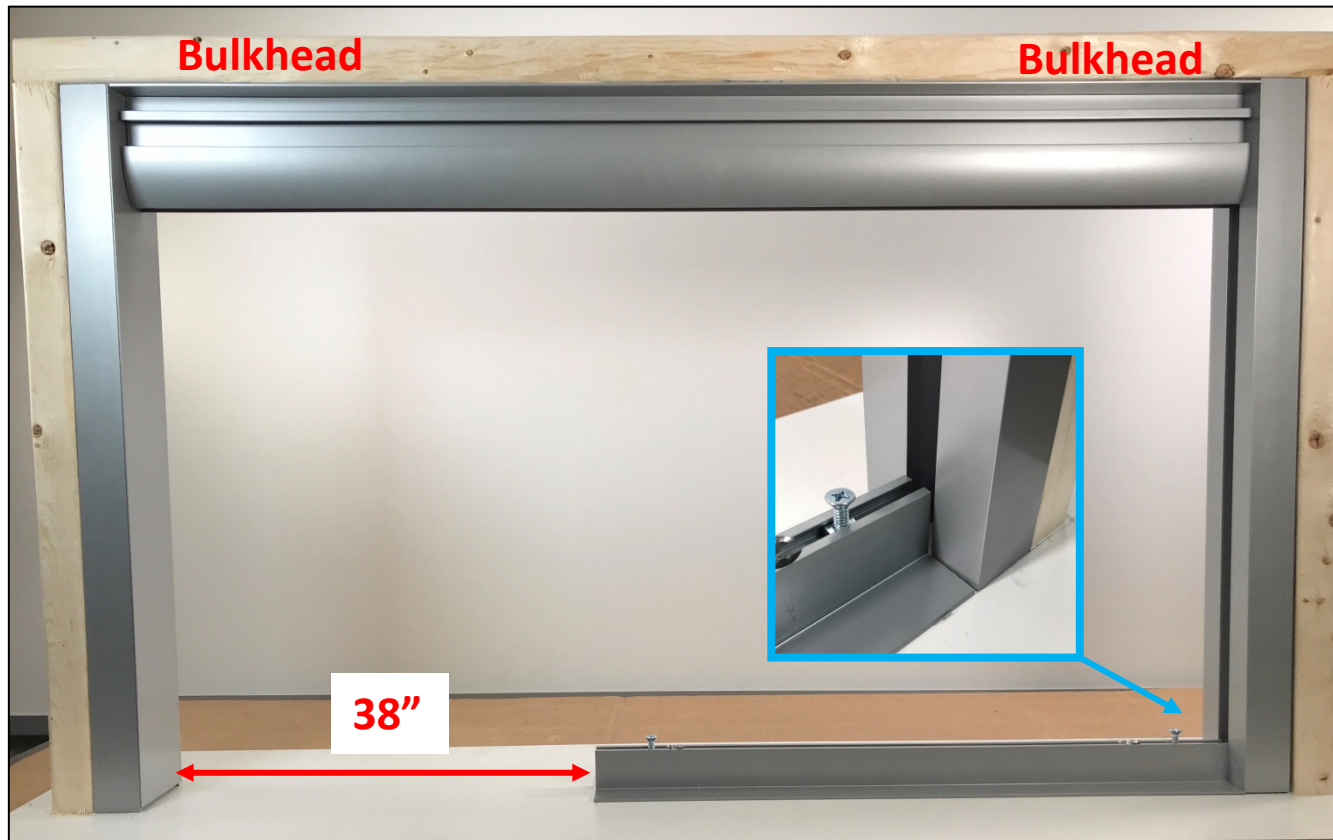
To prep the View Track, drill a 1/4" hole at each attaching point.

To measure for the View Track, measure from the Finish Cover to the Wall-Start. Cut to length, then prep the View Track (Arrowhead) for installation (see image above). Attach the View Track to the View Guide using 4" screws. Once attached, check to make sure the Track is 100% level.

**\*\*After door installation if the View Track needs to be adjusted to eliminate a light gap between the door and the Wall-Start/Finish Cover, loosen or tighten the 4" attaching screw within the door opening until the door closes tight to the Wall-Start/Finish Cover\*\***



## View Series Sliding Door Bulkhead Attachment (Floor View Track/Guide Installation):



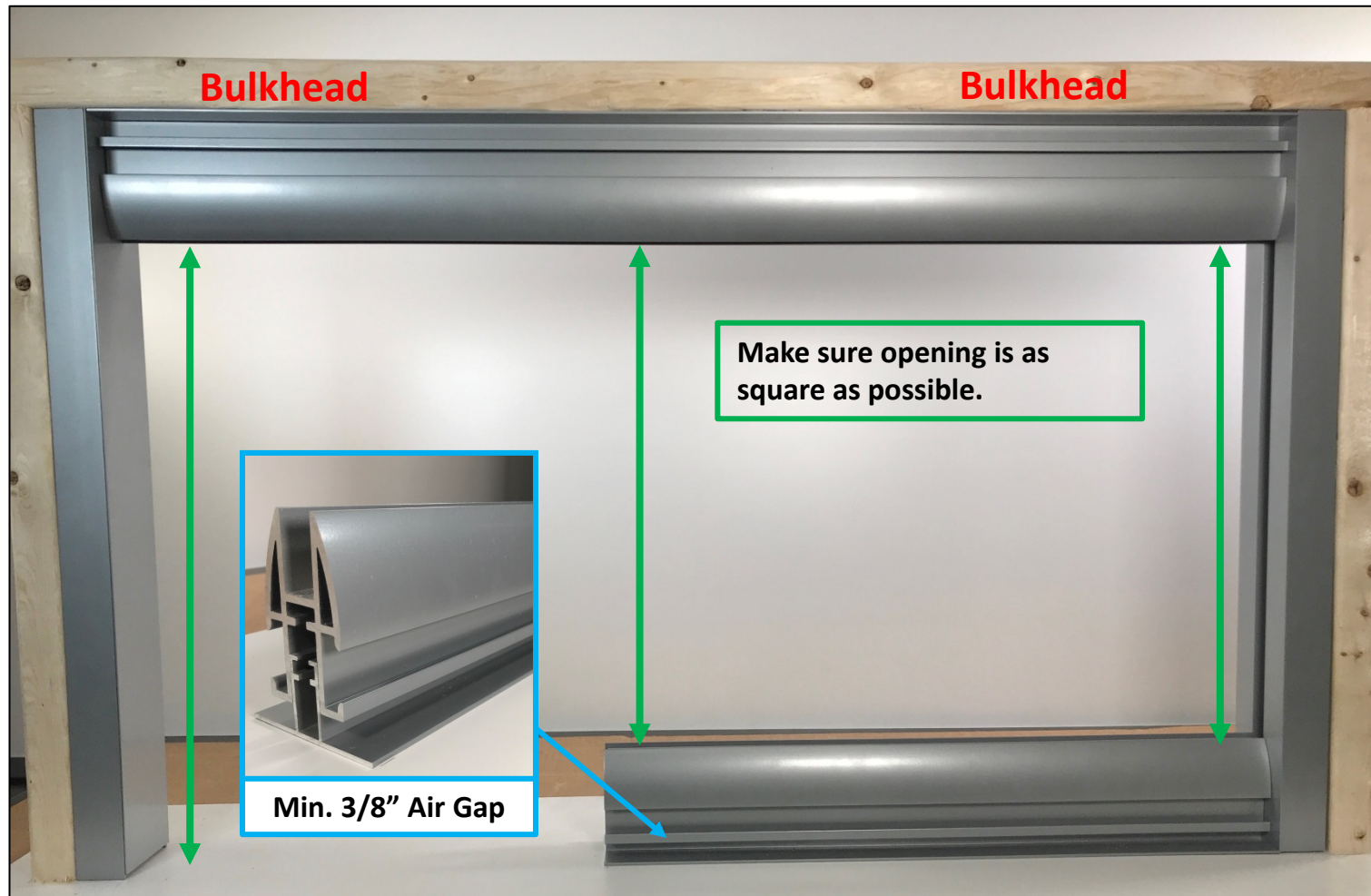
To measure for the View Track and Guide attaching to the floor start with the door opening. Standard width openings are 38". Mark the floor indicating the 38" opening. Once the opening is determined measure from the Wall-Start to the mark on the floor. Cut and prep the View Guide. The View Track and Guide can be cut together. They will be the same length.

Using a step drill bit, drill holes through top of the Guide. This allows the bit to fit into the Guide for the attaching screws. Anchor the Guide to the floor. Install the Leveling Bolts.

**IMPORTANT: For standard width doors the finished door opening must be 38". Standard width doors for View Series are 42".**



## View Series Sliding Door Bulkhead Attachment (Floor View Track/Guide Installation):



Adjust the Leveling Bolts to level the View Track on the Floor. **Must have a minimum air gap of 3/8\" between View Guide and View Track.** This gap could be on either end of the wall depending on the floor variation. The View Track will sit on the View Guide, it does not need to be attached. Framing is now complete. The glass measurements can be taken per our glass measuring guide.