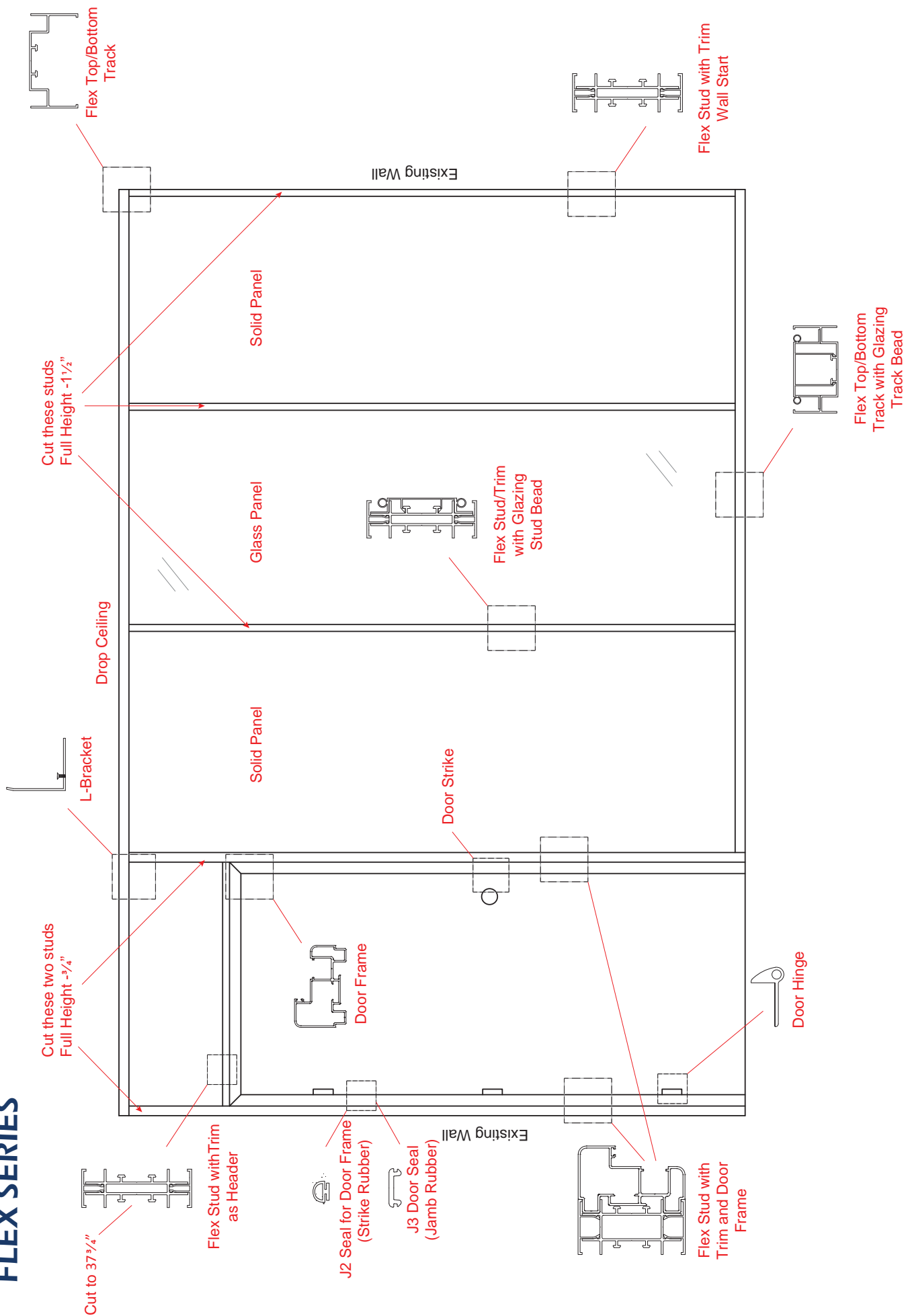


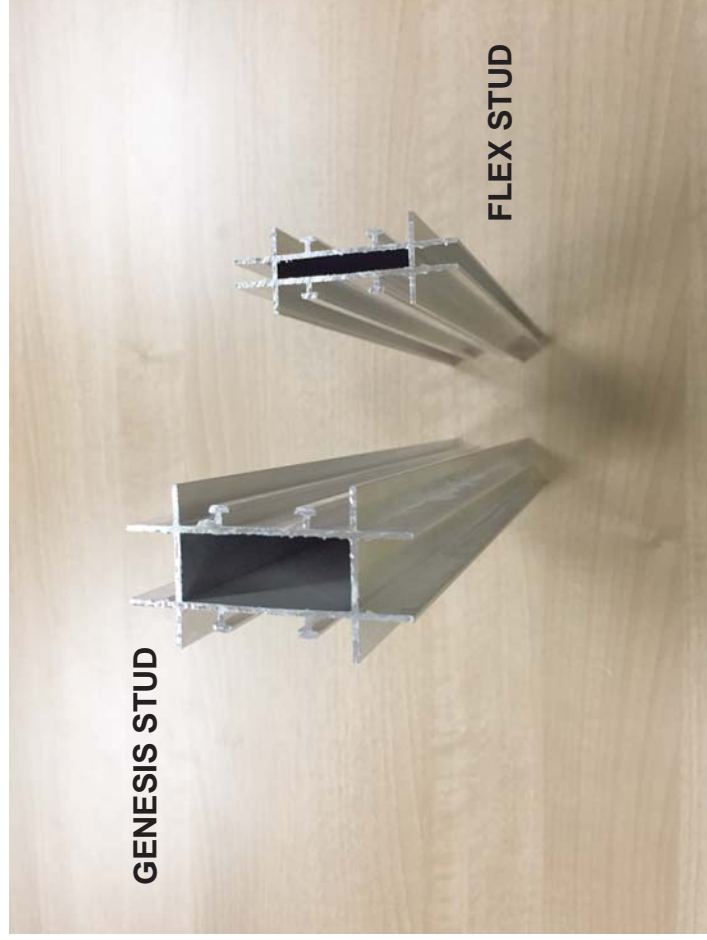


Installation Walkthrough Image Guide

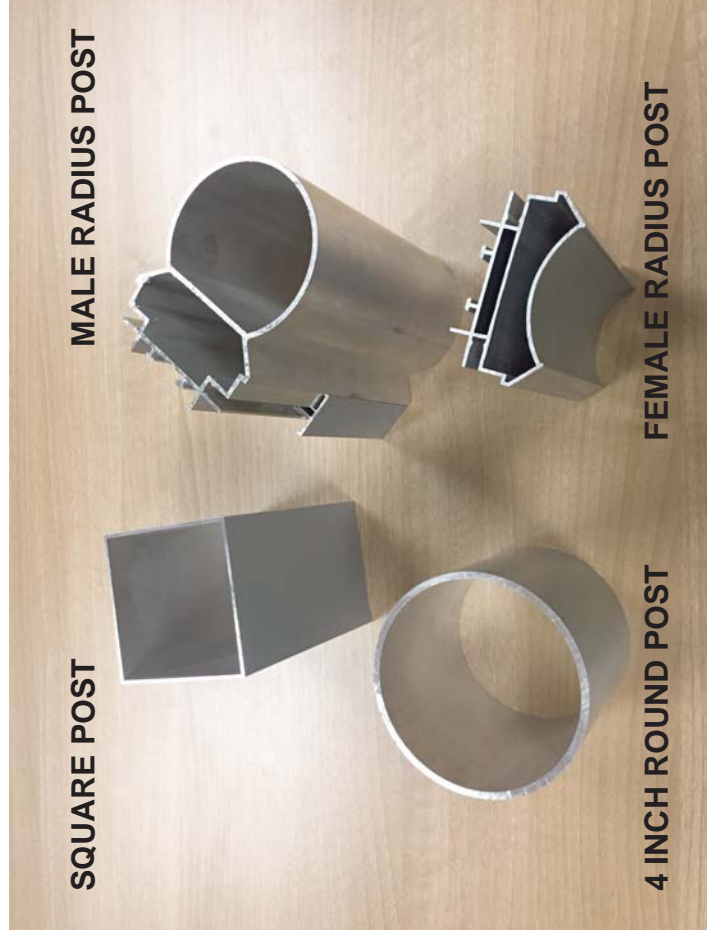
Flex Series



STUD PROFILES



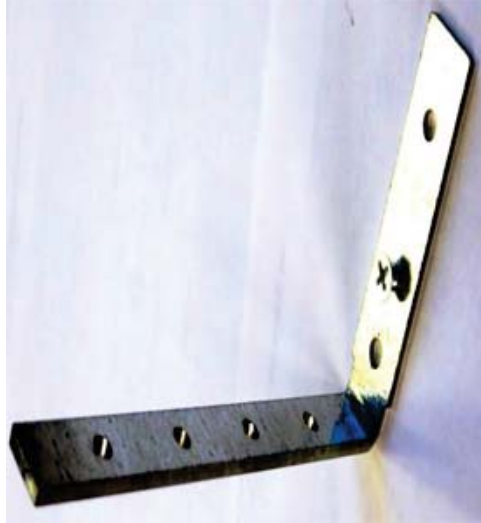
POST PROFILES



Track Joiner



L-bracket



Floor & Ceiling Track



Track Prep and Assembly

Start with your ceiling track pieces.

Lay them on the floor right below where you will be installing them, and slide your L-brackets into place.

The L-brackets will soon hold the studs into place.

You will want to space your L-brackets accordingly so that when you attach your top track, your fasteners do not interfere with your L-brackets.

Use the track joiner to connect two sections of the track together.

Top Track Installation

After you have spaced your L-brackets for layout, fasten your track to the ceiling. (48" Maximum Spacing for Drywall board, 49" Max Spacing for MDF board). When fastening to the ceiling grid you may use a self tapping screw or a caddy clip. Using a caddy clip is a less intrusive way to connect ceiling grid.

Note: Attaching hardware for existing floors, walls and ceilings are ***not*** supplied by manufacturer.



Example of a caddy clip



Attaching track piece to ceiling grid

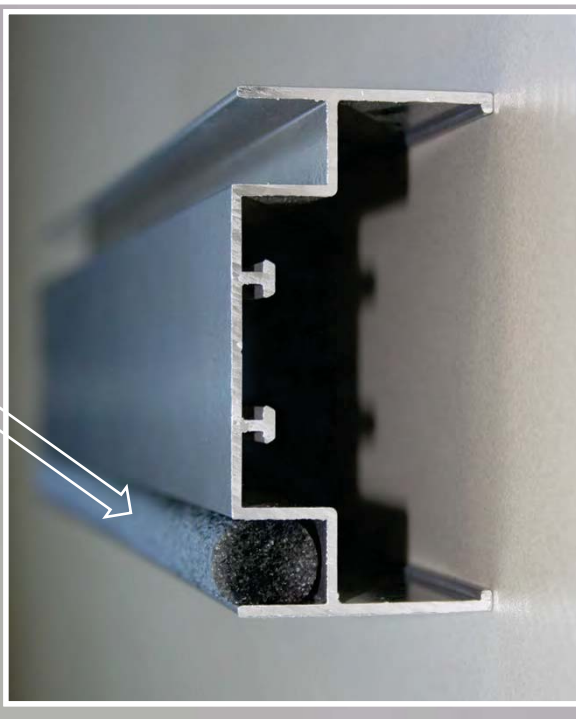


Bottom Track Installation



If you have a gap in your floor, wall or ceiling, install Etafome to seal the gaps.

Etafome: sound and light seal



When installing the bottom track, make sure the L-brackets are spaced out accordingly (see photo). Bottom track can be attached with tapcons or other concrete anchor. (48" Maximum Spacing for Drywall board, 49" Max Spacing for MDF board).

(NOTE: Floor anchors are NOT supplied by manufacturer.)

Stud Installation

When installing studs it is very important to have your studs sitting plumb. Use a 3/4" self-tapping screw to attach the L-brackets to the studs. Once the stud is in place and the L-brackets are attached, adjust to width and tighten the set screws.

When measuring the length of studs:

Measure from floor-to-ceiling, then subtract $1\frac{1}{2}"$.

IMPORTANT:

Studs located at **doorways** are measured differently.

Studs at this location will go all the way to the floor and are not nested within the bottom track. (They will sit outside of the bottom track). For these studs, measure from floor-to-ceiling, then subtract $\frac{3}{4}"$.

Important notes: If you forgot to put in an L-bracket, the L-bracket will slide into the center of the stud and fasten through the track.

Panel dimensions shown in plan and elevations view drawings will depict visible opening dimensions only. (**Example: 3'-11"3/8 VO accepts a full 4' wide panel.**)

All prints are used as a guideline only. NxtWall provides field-fit, site built wall systems. Please consult your project manager for major field changes.

Framing Door Opening - Installation

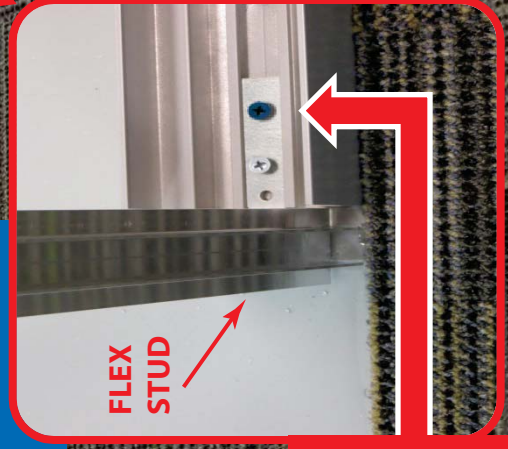
When framing the door it is very important that both studs are plumb. To achieve the proper width between the two studs, use the door header as a measuring tool (as shown below) at the top *and* bottom of your door opening.



Note: The studs for the door frame do not sit inside the bottom track. Instead, they sit just **outside** of the track. (as shown below right)

FLEX
STUD

It is recommended by the Manufacturer to place a Tapcon screw through the L-bracket into the floor on both sides of the door.



Door Frame Assembly

When installing the door frame, install the door legs first but don't fasten them yet. Cut Stud to 37 ³/₄".

Next, attach the door header to the stud and place it onto the door legs.

Level the door header then attach the header with the stud through the L-brackets to the framing.

After the header is installed you may have to lift one or both the door legs up to the header and then fasten the door legs.

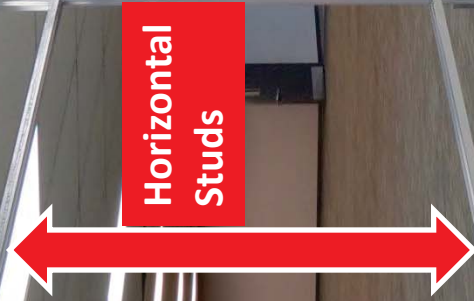
Note: It is important that you do not cut down the door legs. The door frames are precut to allow for only a 1/2" under the door.

Fasten door frame through this point into the studs.

Note: Use the 1-1/4" screws that are provided.

Note: When installing full height doors you will need to cut the door legs down. Also, be sure to fasten the header to the track.

Segmentation Framing



NOTE: Horizontal Studs need to be cut short of Visual Opening.

When segmenting the wall (as shown in this picture) it is best to use a laser level to ensure proper installation. Slide the L-bracket into the horizontal stud and attach to the vertical framing with 3/4" screw. Do not tighten the set screw on the L-bracket until all the horizontal studs are in place. Once the horizontal studs are in, start pulling your layout from a plumb end and work your way down the wall, tightening the set screws as you go.

Pre-Trim Wall Board & Glass Installation

When installing wall board or glass you can hold them in place with small pieces of trim.
(These are also referred to as a tag).

Note: Create these pieces out of scrap for we don't supply extra materials for this purpose.

Flex Trim
(Tag)



Installing the Insulation

After the placement of wall board on one side of the wall is completed, you will be ready to install the insulation. Sound attenuation batts (shown below) can be cut into pieces and pressure-fit between two studs. Roxul (an alternative insulation) can be installed with a spray adhesive.

(NOTE: Adhesive will NOT be provided by NxtWall)

NOTE: If possible, install the trim on the side of the wall that already has board placed within it. This will help to keep the board from moving around while installing the insulation.

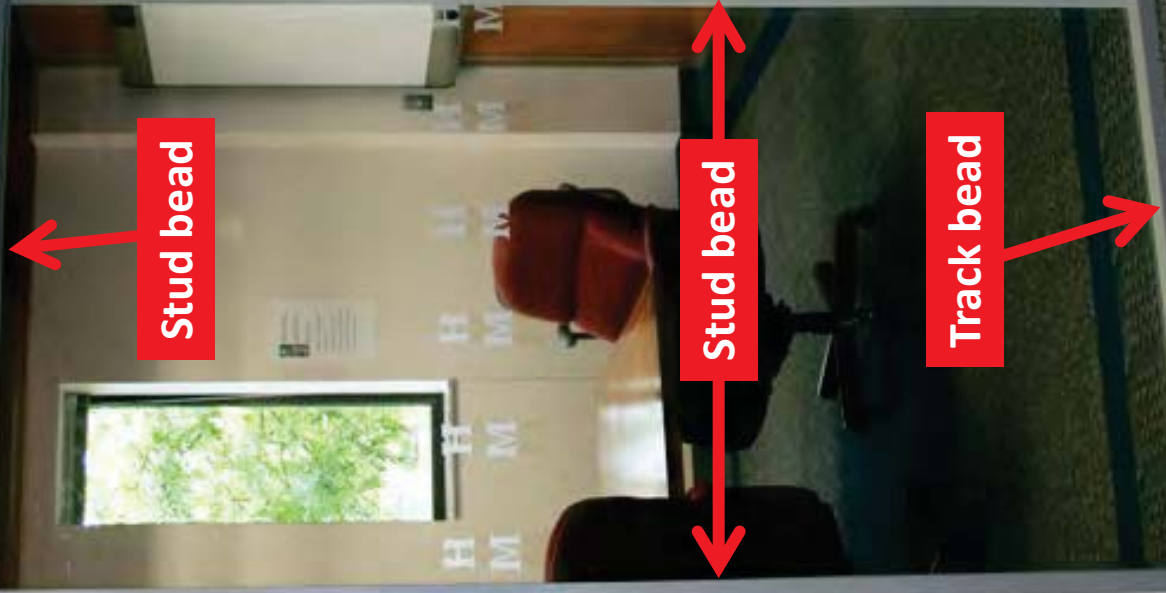
Track & Stud Bead Installation

When installing the track and stud bead you will want to start with the top and bottom first.

Your cuts must be exact, for if you cut them too large you will alter the framing of your wall. If you cut them too short, they will not cover the track completely and a gap will show through the glass.

After the top and bottom are installed, cut the verticals to 1/16" longer of the Visual Openings.

Both glazing beads will install easily with a soft mallet.



Detail Images:

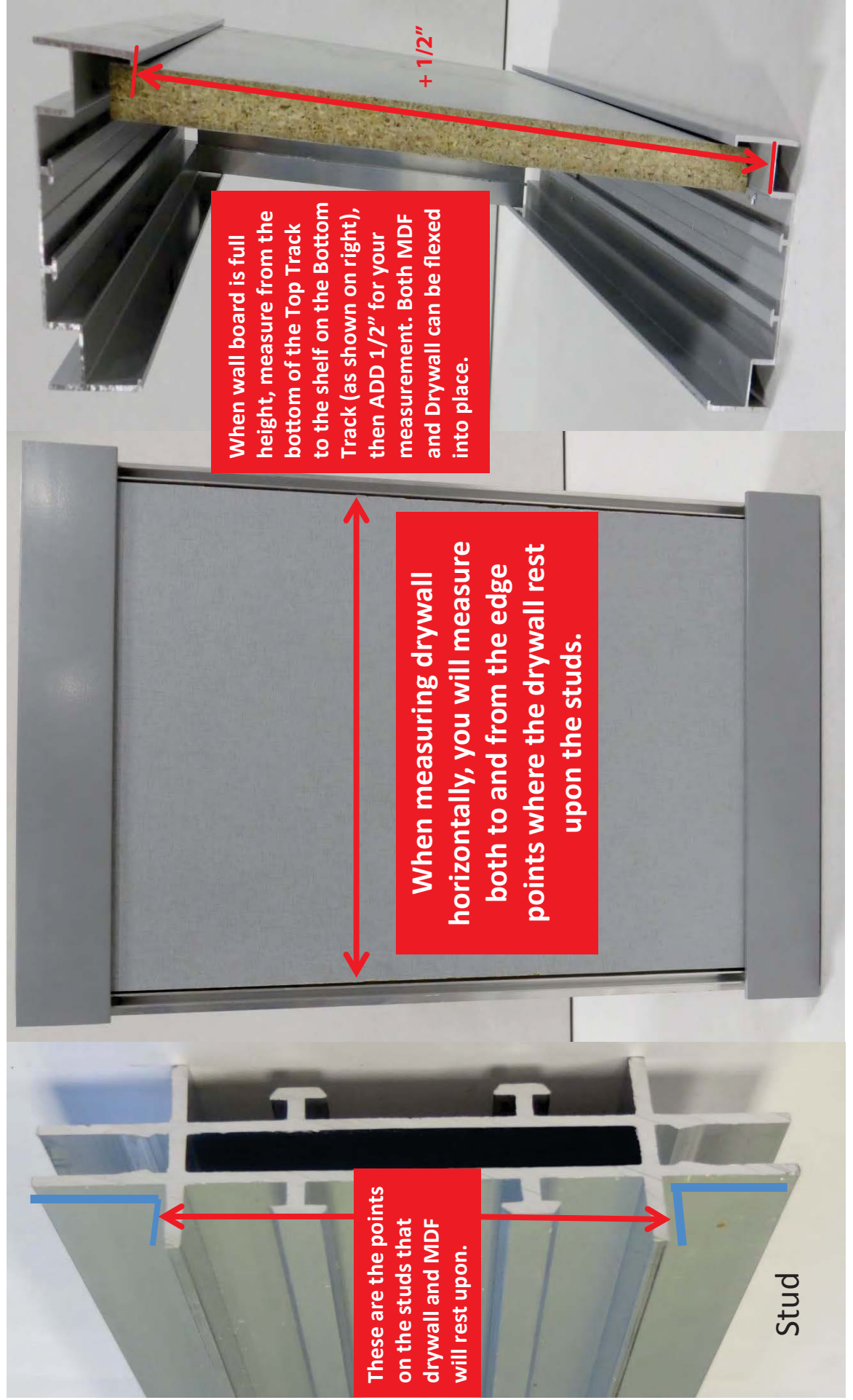


Stud bead snapping into a Stud

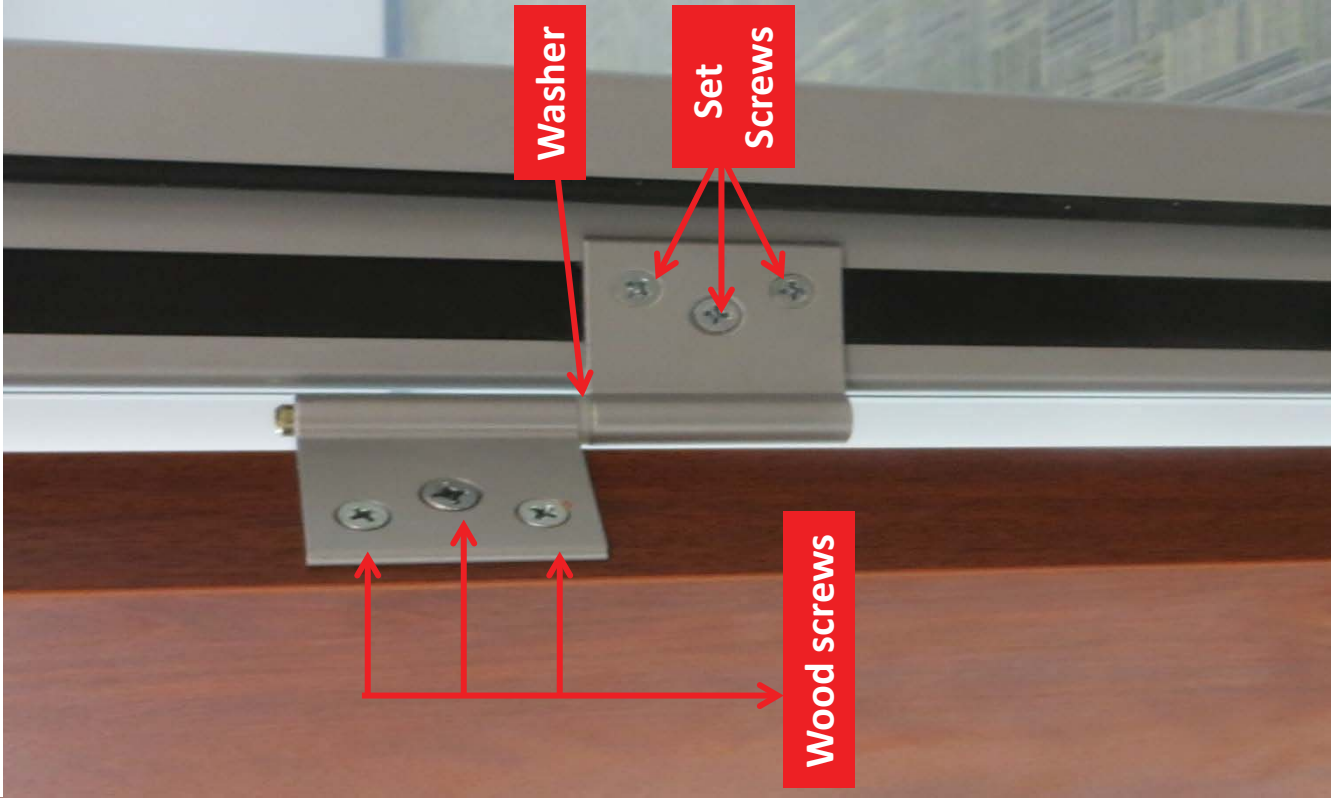


Track bead snapping into Floor or Ceiling Track

Points of Measurement for Drywall and MDF Board



Standard Swing Door Installation



Door Hardware Kit

Strike plate

Hinge pin

Washer

Hinge Back plate

Hinge

Set screws (Qty 3)

Hinge

Strike rubber
Jamb rubber

Installing the hinge set for the door:

Fasten one of the hinges to the door, but be sure to predrill the holes for the screws to insure the hinge sets properly on the door.

The hinge that attaches to the door frame is held on by a back plate that pinches the door frame when the set screws are installed.

Confirm that the washer is installed on the pin between the hinges.

If the washer is not installed, the hinges will bind and start milling and possibly bend the hinge pin.

