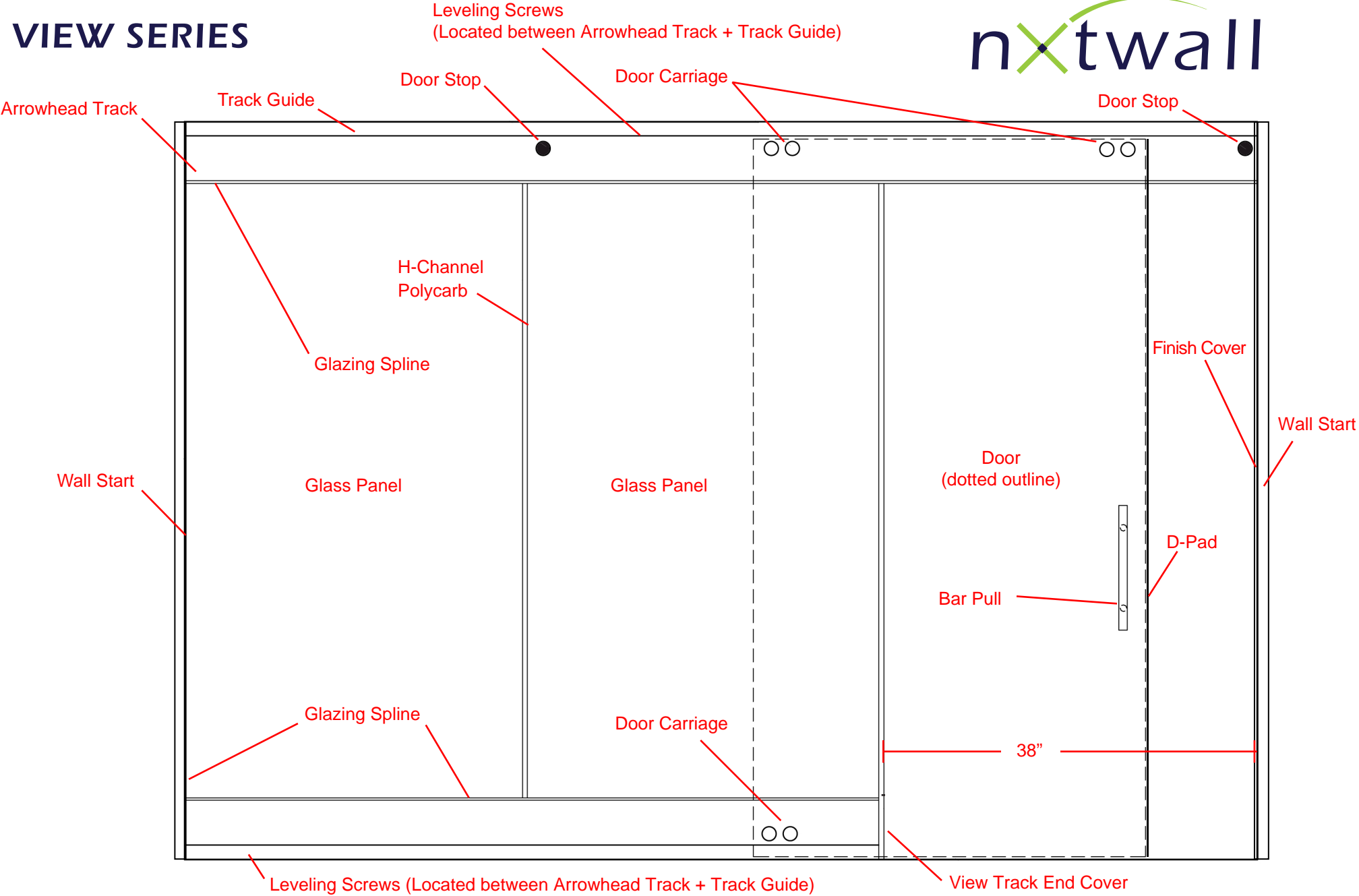




## **VIEW SERIES** with Sliding Door IMAGE INSTALLATION GUIDE

# VIEW SERIES

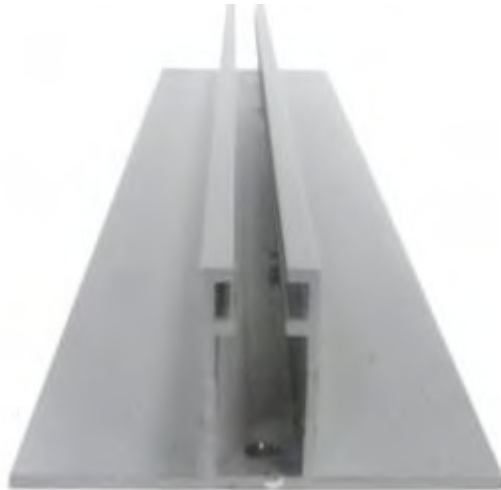


VIEW SYSTEM WALL ASSEMBLY DIAGRAM

# VIEW SERIES COMPONENTS



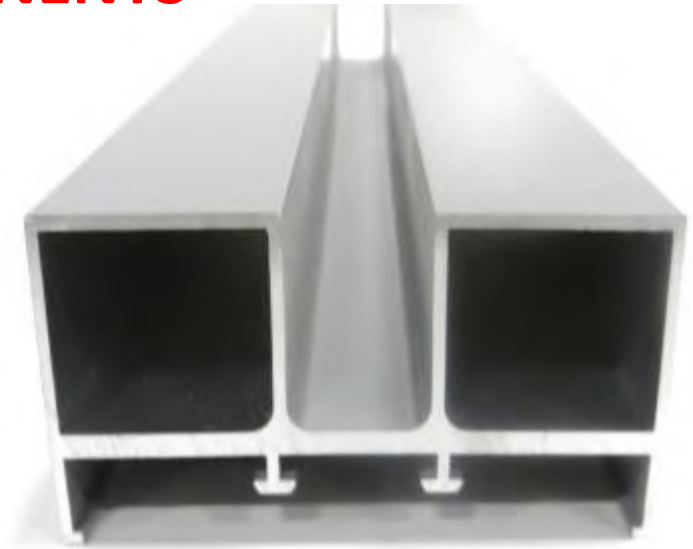
**View Track**  
(Arrow head)



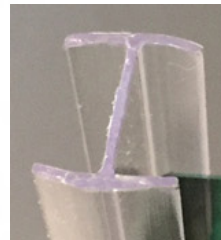
**Track Guide**



**D-Pad**



**Wall Start**



**H-Channel Polycarb**



**View Carriage**

**Door Bumps/Stops**



**Levelers**

**View L-Bracket**



**Flex L-Bracket**



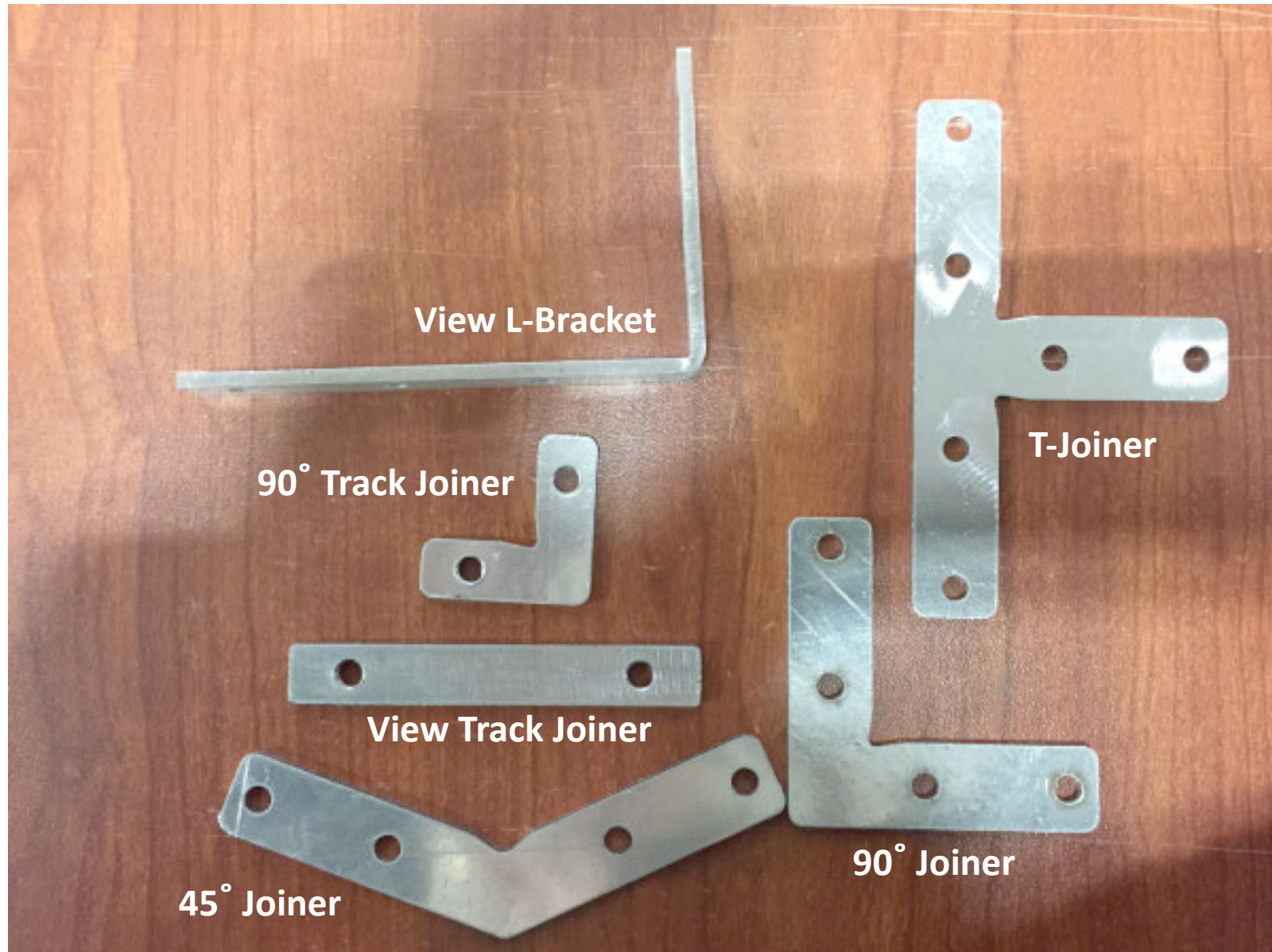
**Shims**



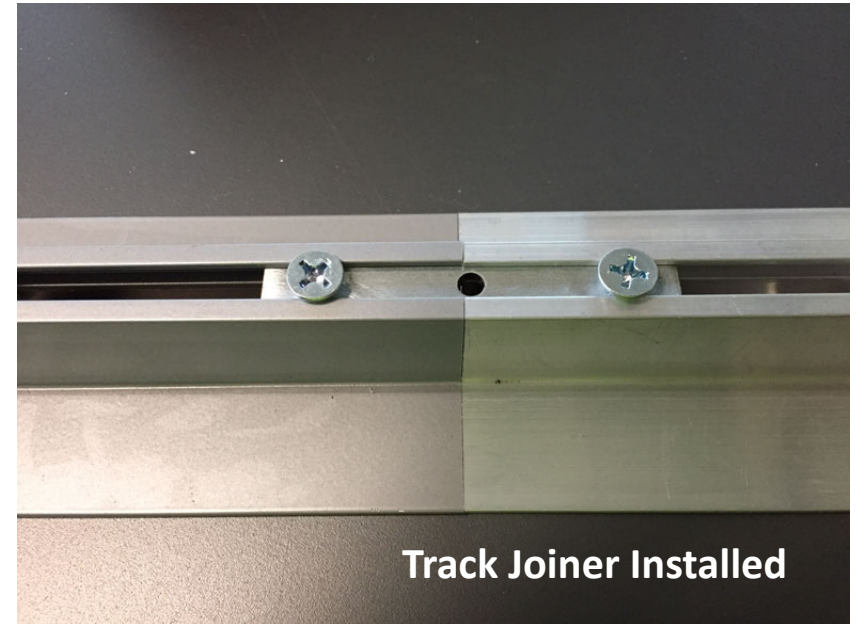
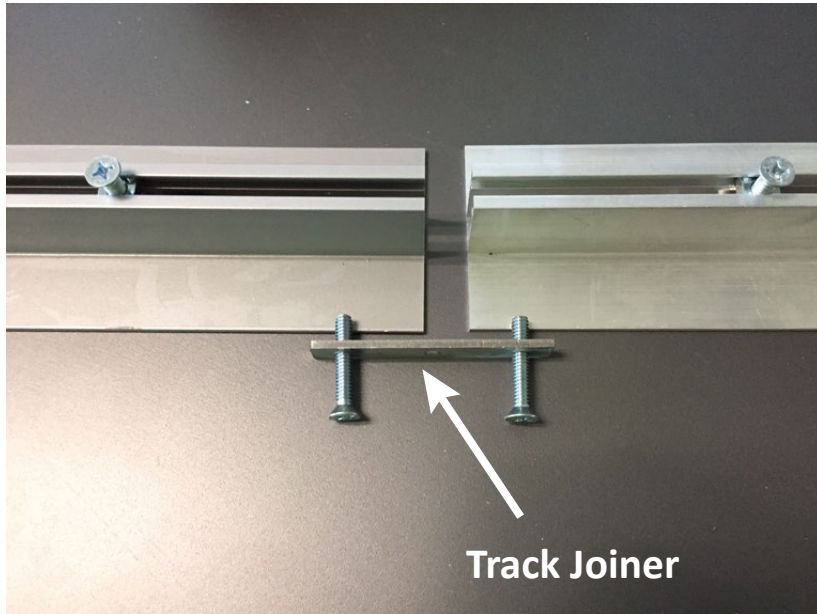
**Spline**  
3/8" or 1/2"



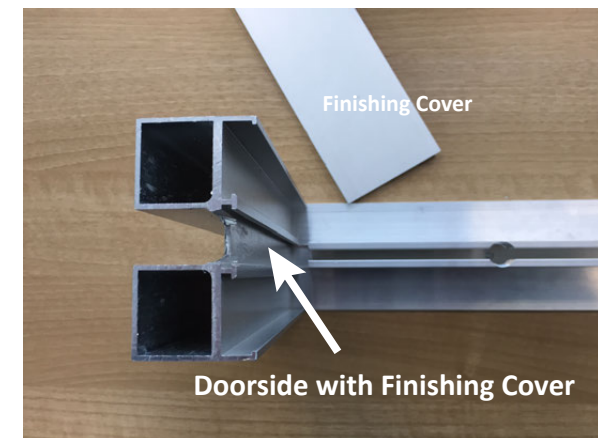
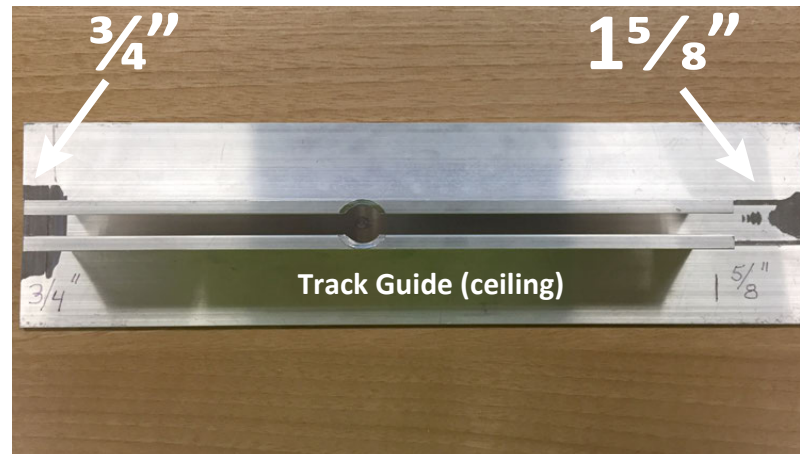
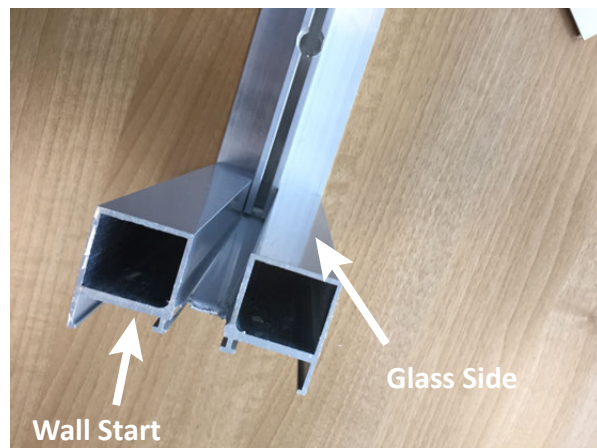
## VIEW SERIES ADDITIONAL COMPONENTS



## VIEW SERIES TRACK JOINER



## VIEW SERIES WALL START - TO - CEILING TRACK





**Wall Start**

**Glass Side**

**Stud Side**

When starting the framing process for the View system, you will begin with the Wall Starts. Use a 1/4" drill bit make a pilot hole for your connecting screws.

On the side that the sliding door closes into, you will place the glass side against the existing wall and fasten through the center of the Stud Side.

On an install like this where you have glass on this side you will have the Stud Side against the existing wall and attach through the U-channel of the Glass Side with your fastener into the existing wall.

**Finishing Cover**

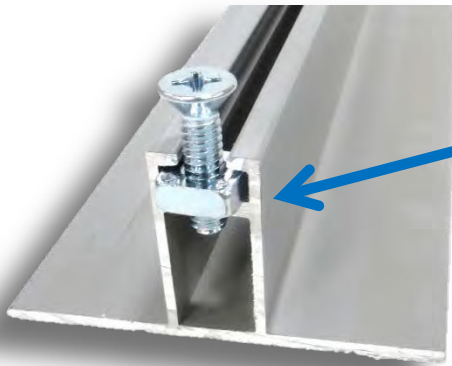
**Hook**

**Snap**

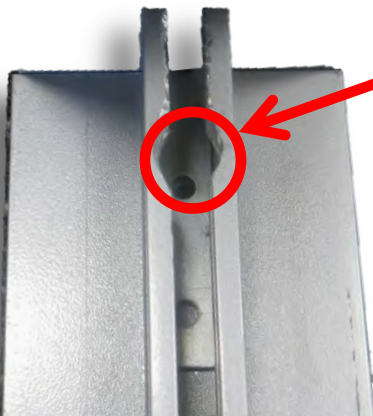
After the Wall Start is installed on the door side, to finish the Stud side of the Wall Start, you will use the Finishing Cover. This part will simply snap on. It has 2 parts to it: a hook and a snap. Place the hook side onto the lip of the Wall Start and simply roll the cover flat to the Wall Start and lightly tap the snap side in. That will give you a nice finished side. It is best to finish the Wall Start with the Finishing Cover before installing the track.

We recommend using Tapcons when installing the Track Guide at the floor (after following the guide prep below). At the ceiling, use a screw that is compatible with the material in which you are attaching to. If you have a spliced track be sure to offset the splice of both the Track and Guide. This will keep the track ridged. Recommended distance for attachment is every 3 feet.

**(NOTE: NxtWall does not supply attaching hardware.)**



Before you attach your Guide, install the leveling nut and bolt (as shown). The leveling nut and bolt have 1 1/8" worth of adjustment range per track. These are to be installed every 3 feet or as needed. If you have a spliced track then you will need 1 on each side of the splice. To level the nut and bolt you can use a level and place it from one to the other all the way down the track, or you may set up a laser for quicker leveling.

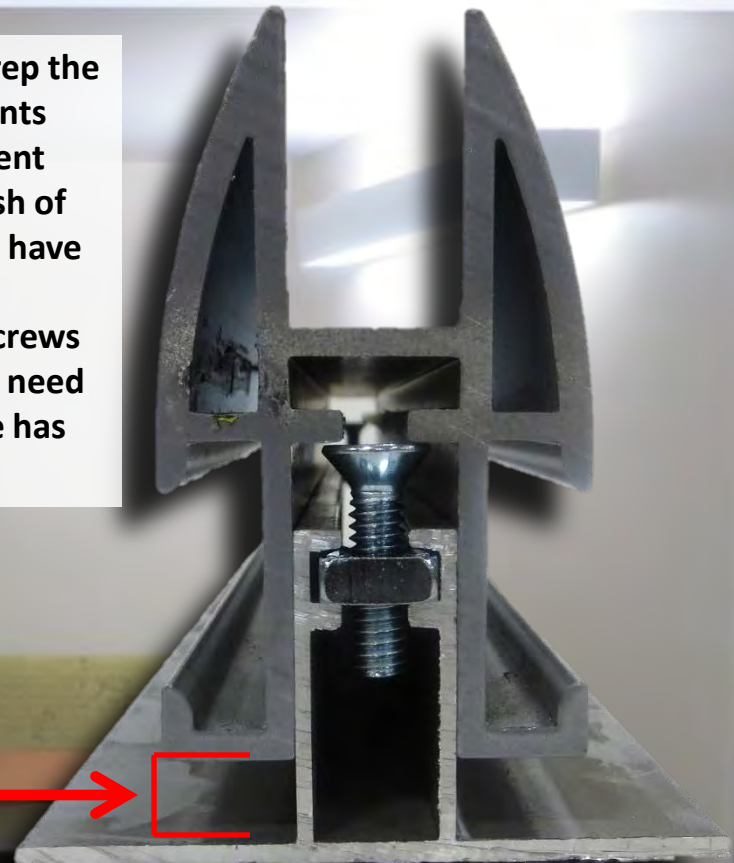


When installing the View Track Guide you will need to drill out this part of the track using a 7/8" Step drill bit. This will allow you to get your fasteners and bits inside the Track Guide. You will use this on both the top and bottom Guide.

After the Track Guide and levelers are installed, proceed to prep the Track (arrow head shaped piece) with a 1/4 drill bit at the points you will be attaching through. This preparation step will prevent the guide from pulling the Track down and scratching the finish of the Wall Start. If you are attaching to a bulk head, it is best to have wood inside of your bulk head. If this isn't possible or you're attaching to metal framing, be sure to not over torque your screws for doing so will strip the framing. The bottom Track does not need attaching, it is just placed on top of the guide (after the Guide has been attached to the floor).

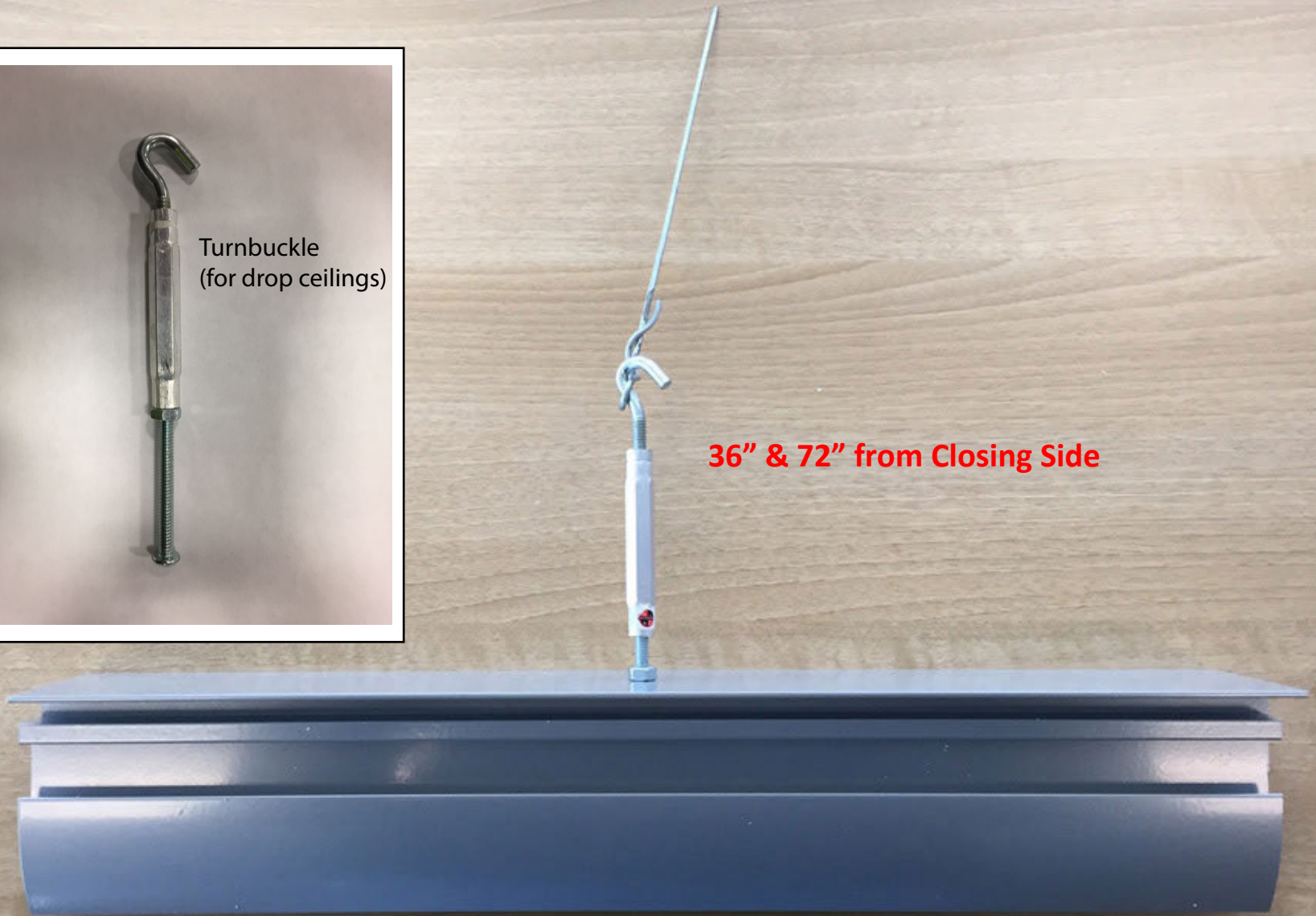
With a sliding door the air gap between the Track Guide and Track (shown) should be no smaller than 3/8"

Standard sliding door opening is 38"  
From Wall Start to edge of Track.





If attaching VIEW to a ceiling grid, you will need to add turnbuckle bracing as shown below.



# VIEW SERIES

## Measuring for Vertical Glass

Screw

When measuring the vertical measurements of the View Series, place your tape measure on the head of the screw inside the top track and measure to the very top of the bottom track, then subtract  $\frac{1}{4}$ ".

-  $\frac{1}{4}$ "

**YOU WILL WANT TO TAKE MULTIPLE MEASUREMENTS ALONG THE LENGTH OF YOUR TRACK AT EACH SCREW HEAD.**

**\*ALL Vertical Glass Measurements should be the same height. If they differ, either your top track or bottom track need to be re-leveled to ensure proper glass measurements and installation.**

Screw

G  
L  
A  
S  
S

$\frac{1}{8}$ "

SHIMS

$\frac{1}{2}$ "

SHIM

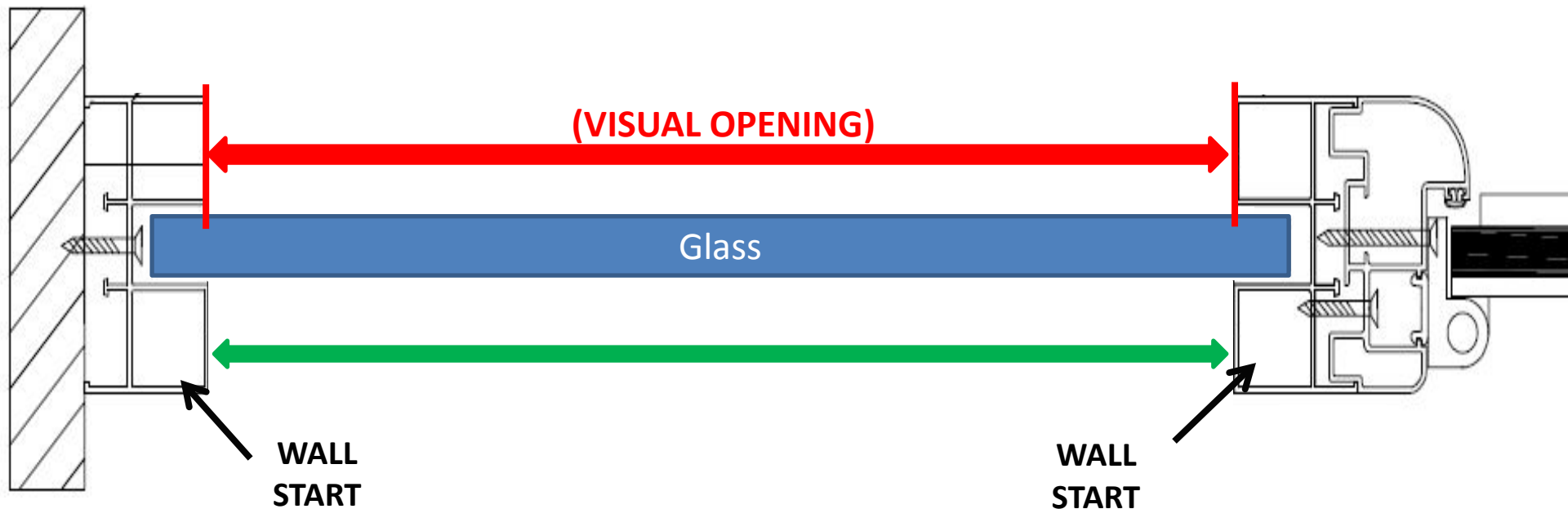
Example of Installed Glass

# VIEW SERIES

## Measuring for Horizontal Glass

- If your project has between 2 and 6 panes of glass in a partition you will need to measure the VO (visual opening) and add a  $\frac{1}{2}$ " to your overall measurement. This total will then be divided by the number of panes of glass you have.

**For example:** If I had 4 panes of glass and my VO (visual opening) was 96" I would simply add  $\frac{1}{2}$ " to that. I would then divide  $96 \frac{1}{2}$ " by 4 giving myself  $24 \frac{1}{8}$ " for each of the four panes of glass widths.



**Note:** If you have more than 6 panes of glass consult with the NxtWall team on how to measure the Width of your opening.



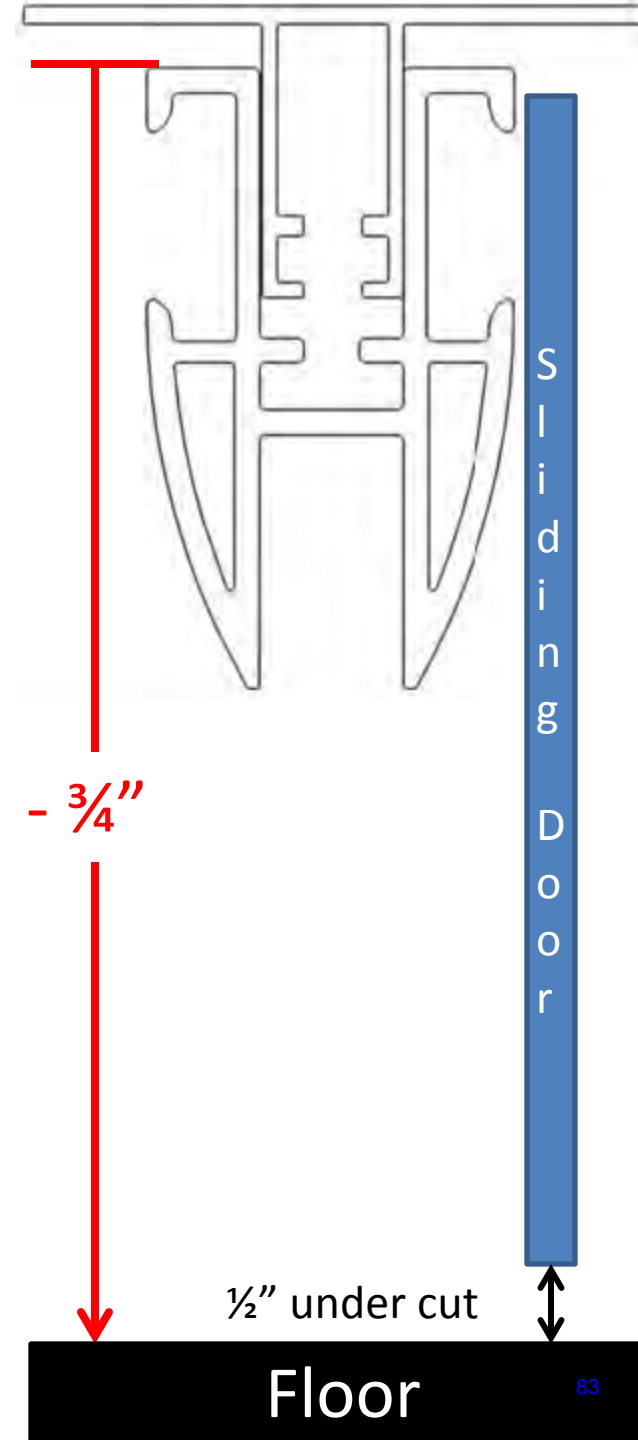
# Measuring View Sliding Door

## Height

When measuring for a View sliding door you will pull your tape from the top of the arrow head shaped track to the floor and subtract  $\frac{3}{4}$  of an inch, like shown in the drawing. Make sure to measure in a few spots along the travel of the door and subtract from the smallest dimension.

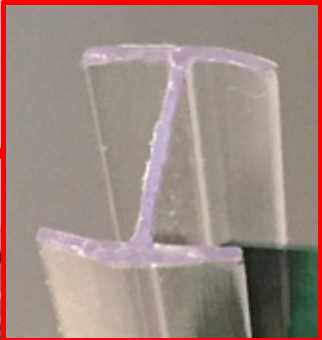
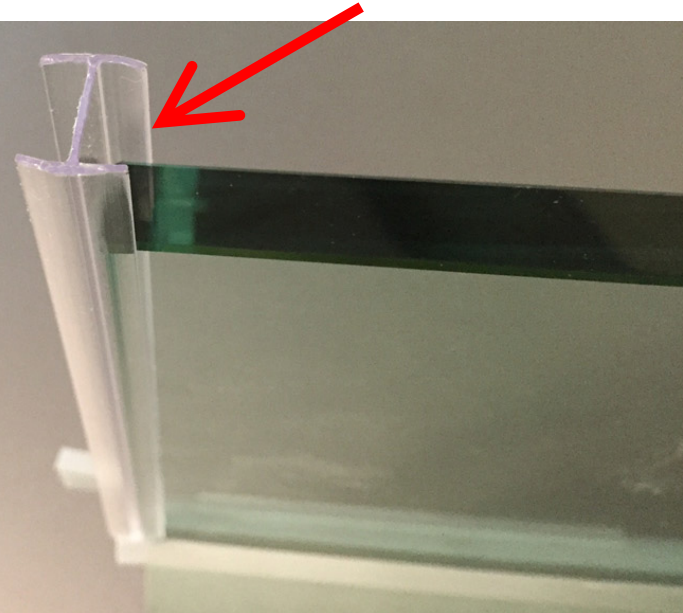
## Width

When submitting your measurements for the View sliding doors (not free standing) the standard width dimension is 42"



The H-Channel polycarb is the buffer material we recommend to use between the panes of glass. Cut the H-Channel to length and apply to both sides of your installed glass. Then proceed to install your next piece of glass. When you adjoin the 2 pieces of glass together, you may have to adjust your shims to get a tight fit on the H-Channel polycarb.

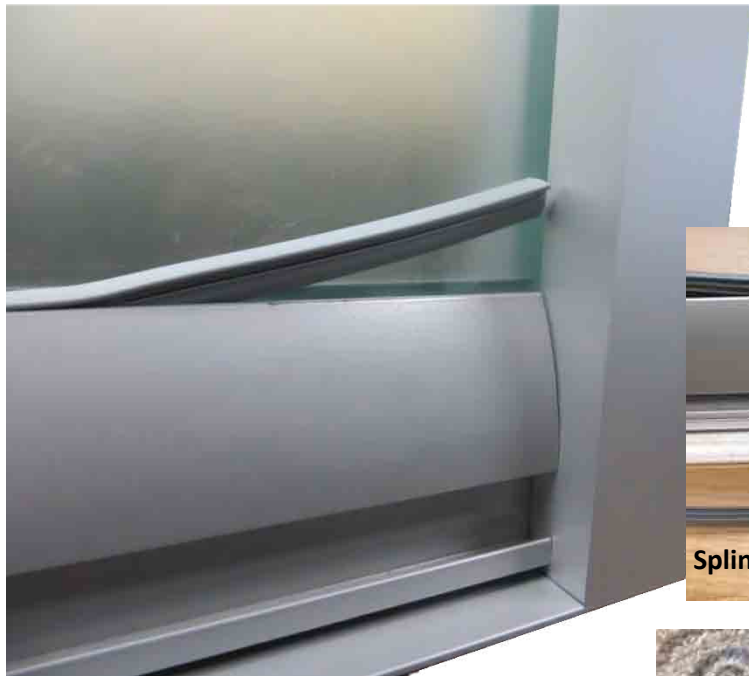
H-Channel polycarb



**IMPORTANT:** Never share a shim between two pieces of glass!  
Place glazing shims 2 to 3 inches inside the edges of each pane

The Spline is available in two different sizes: 1/2" and 3/8". They are both installed the same way, just simply push the spline in between the glass and track (as shown below). Installation requires 2 people = one person for each side. The spline is installed in both the Track and the Wall Start.

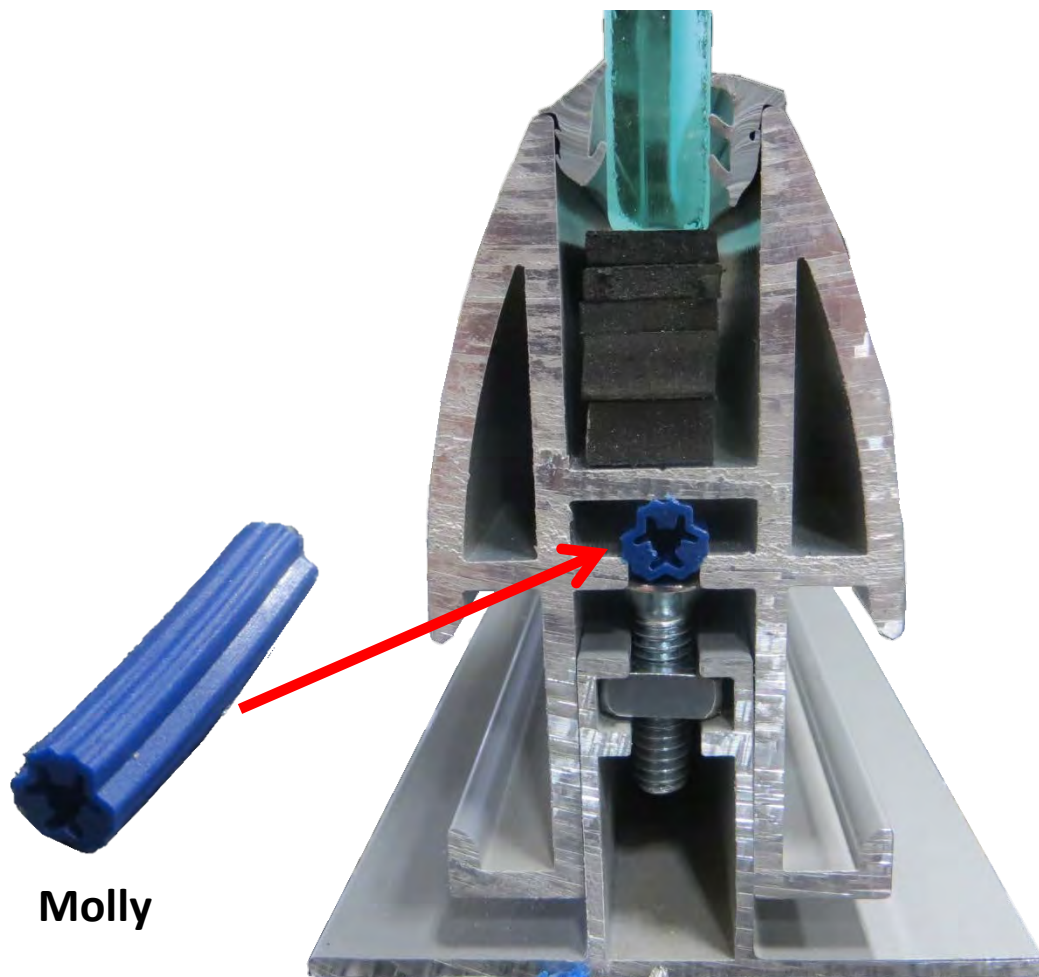
**PICTURED BELOW:** The spline fully installed in both the Track and Wall Start (Horizontal Spline Only)



**NOTE:** You will need to make cuts on the bottom side of Spline pieces where the Spline crosses over the H-channel polycarb to enable a tight fit.

**PICTURED LEFT:** The two Splines reveal a different profile on each side. The side with the fins will always go against the glass.





**Molly**

**Insert the Molly into the Track as shown.**



**Measure the Track Cover and cut to size. Then (using the screw sent with cover) attach the Cover to the Track by screwing into the Molly.**

D-pad  
installed  
on door  
edge



**NOTE: Be cautious with the sliding glass door once the bar pull is mounted! If the door stops are not in the correct location, the bar pull could potentially break the glass when the door is opened.**



**3 CARRIAGES are used for each door that is installed. Carriages are installed into the rails which are built into the track. Each carriage comes with 1 washers, 2 caps, and carriage body- that houses the wheels and bearings.**

**Starting at the top, place the carriages into the track. Next, stand up the door and align the carriages with the drill outs and proceed to screw the caps onto the carriages.**

**The caps are designed to be tightened with a spanner wrench.**

**This is our door stop that mounts inside of the rail of the View Track. It is mounted by a screw through the center of the stop. Open the door so that it has a minimum of a 32" opening, then place the door stop in the rail against the carriage wheel and attach with screw.**



**It is very important that the track be cleaned of any and all debris. This will insure that the door will operate the way it should.**