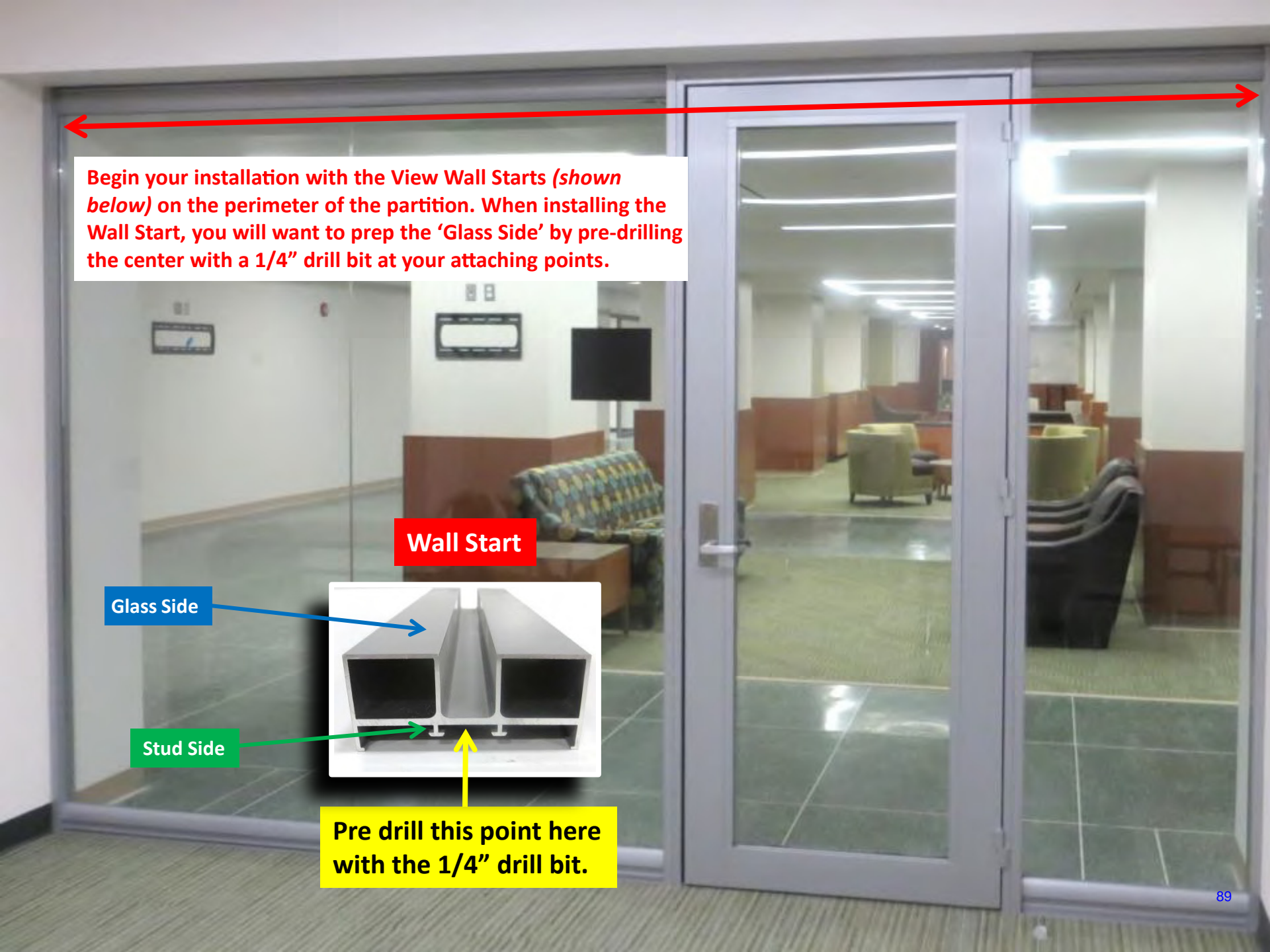




VIEW SERIES with Swing Door IMAGE INSTALLATION GUIDE

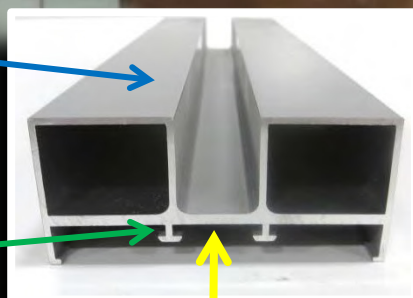


Begin your installation with the View Wall Starts (shown below) on the perimeter of the partition. When installing the Wall Start, you will want to prep the 'Glass Side' by pre-drilling the center with a 1/4" drill bit at your attaching points.

Wall Start

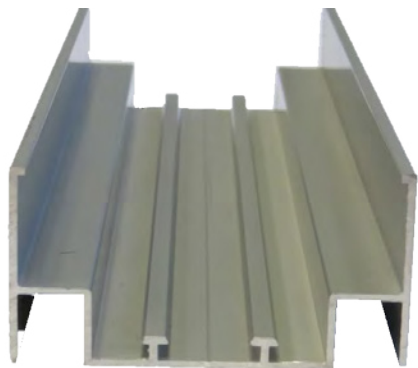
Glass Side

Stud Side



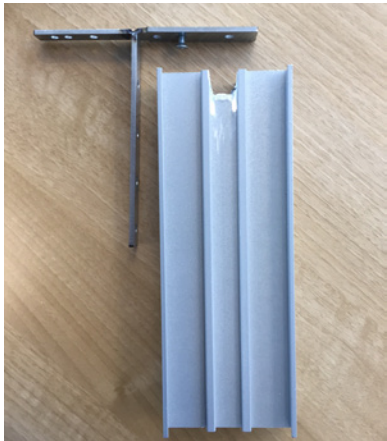
Pre drill this point here with the 1/4" drill bit.

Flex Track

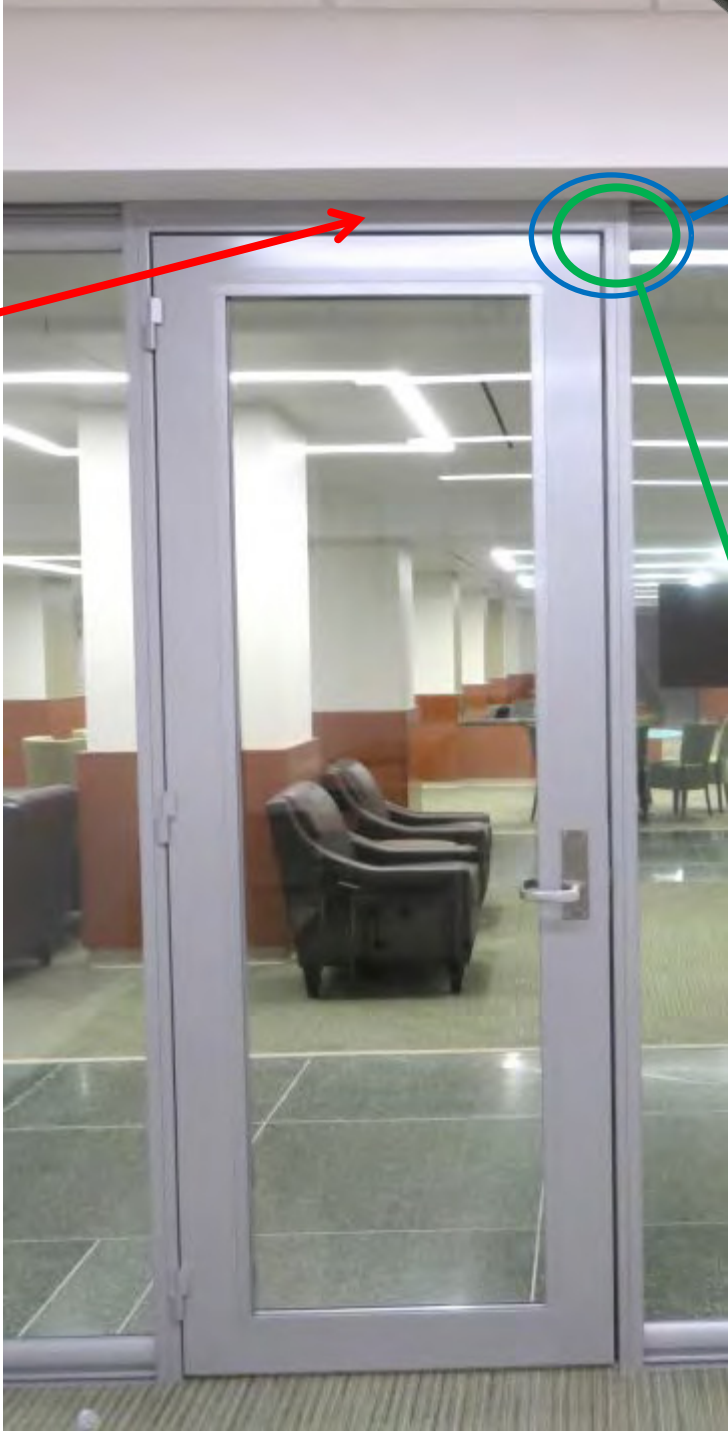


At the top of your door position you will install a Flex Track that is cut at 38" (standard doors only).

Once the Flex track is installed, place a Wall Start on each side of the Flex Track. These will be cut floor-to-ceiling height.

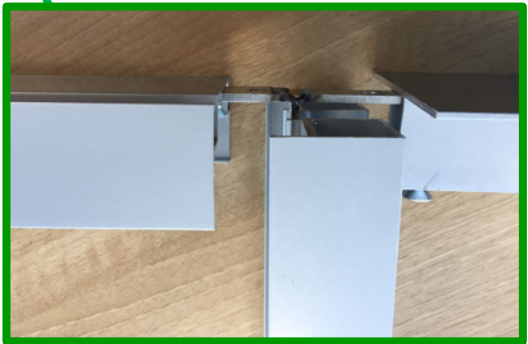


T-bracket with 1/4" cutout Wall Start

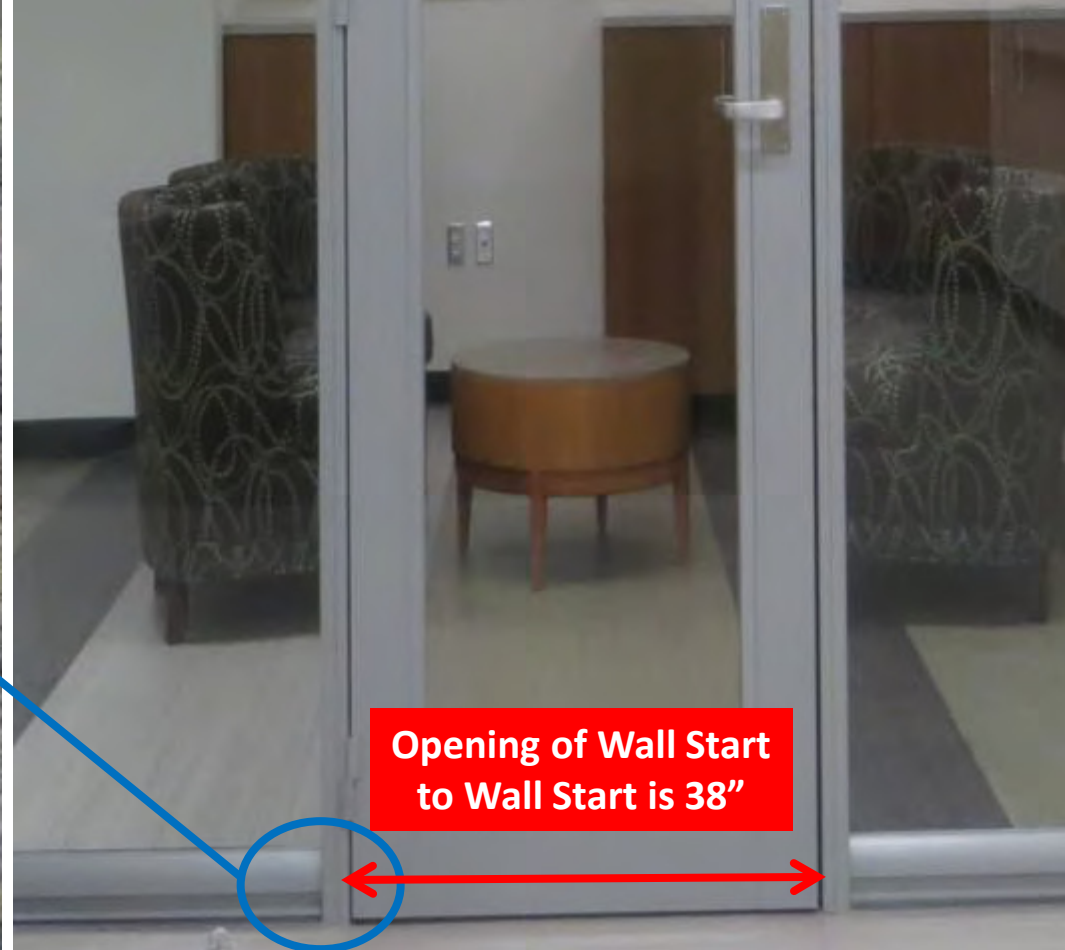
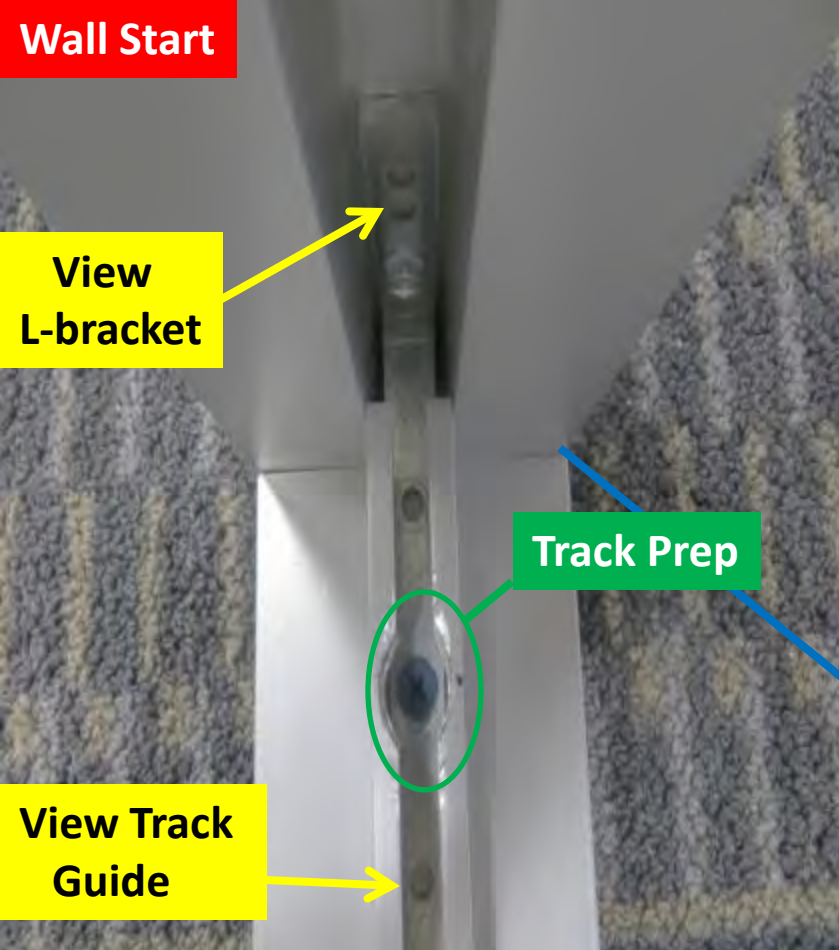


ONLY TOP SCREW

Use the T-bracket to attach Wall Start to the Flex Track (will need to cutout wall start as shown below bottom left)



Detail Image: T-bracket installed with a Wall Start, Flex Track, and View Track.



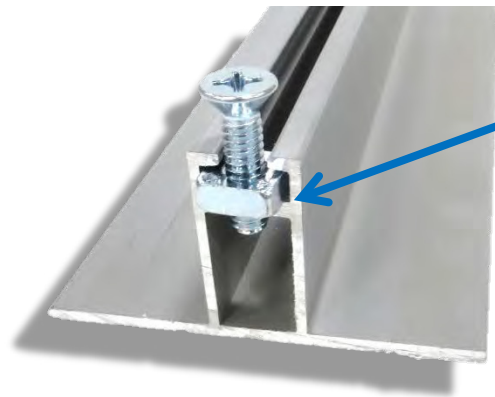
When prepping the View Track Guide, pull your tape from the end of the Guide and drill a 1/4" hole through the bottom and 1-1/2" from the end. Then through the top using a 7/8" bit, hone out the top of the Track Guide above the 1/4" hole. This will make it easier for you to get your fastener and bit down inside. You will have to repeat this process at all your attaching points for the Track Guide.

IMPORTANT: Before you permanently attach the Wall Start to the floor, you need to be plumb and space the Wall Start properly (**38" apart using door header**). After plumbed and spaced properly you can permanently attach the system to the floor with some fasteners.

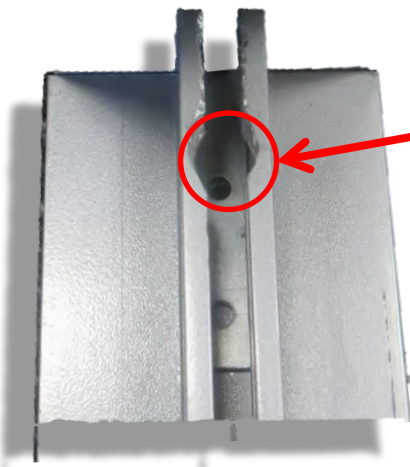
NOTE: NxtWall does **not** supply external fasteners.

When installing the Track Guide (following the guide prep below) it is recommend to use tapcons when attaching to the floor. At the ceiling use a screw that is compatible with the material in which you are attaching to. If you have a spliced track be sure to offset the splice of both the Track and Guide. This will keep the track rigid. The recommended distance for attaching is every 3 feet.

(**Note:** NxtWall does not supply attaching hardware.)



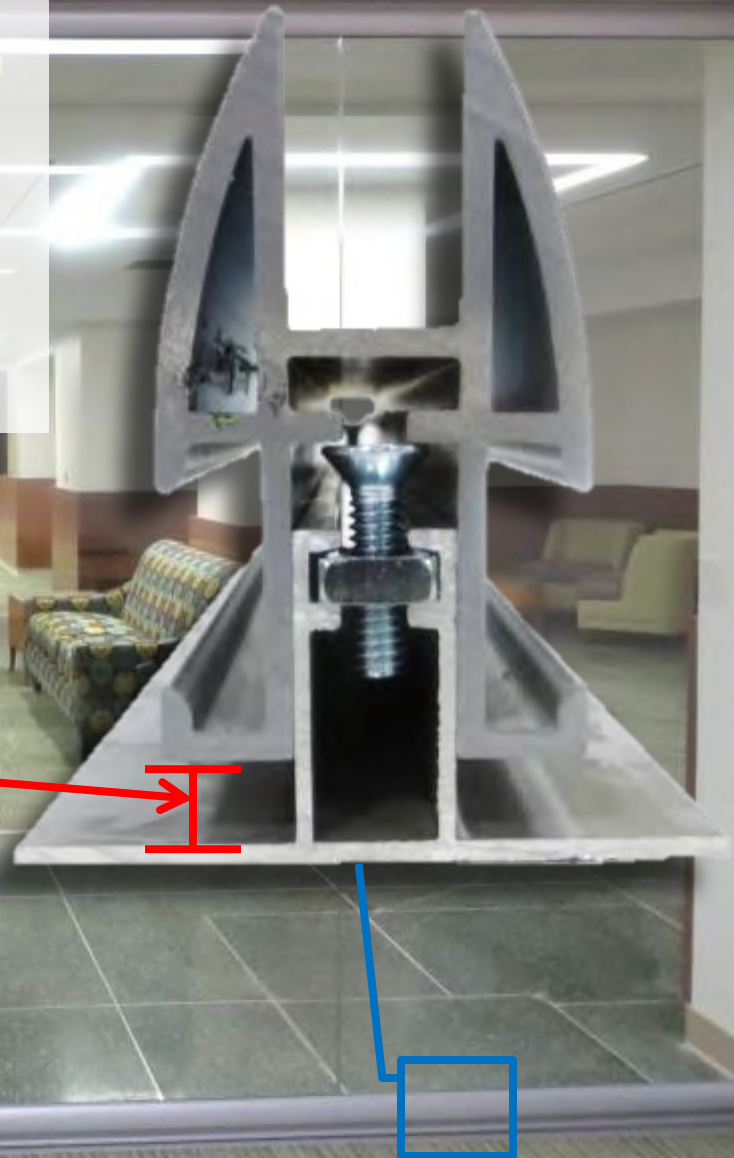
Before attaching Track Guide, first install the leveling nut and bolt (*as shown*). The leveling nut and bolt has 1-1/8" worth of adjustment per track. These are to be installed every 3 feet or as needed. If you have spliced Track then you will need 1 on each side of the splice. To level the nut and bolt you can use a level and place it from one to the other all the way down the track or you can simply set up a laser.



When installing View Guide drill out this part of the track using a 7/8" tapered drill bit. This is just so you can get your fasteners and bits inside. You will use this on both top and floor guide.

After you have the Track Guide and levelers installed, start to prep the “Arrowhead” with a 1/4” drill bit at the points you will attach through. Prepping the Arrowhead prevents scratching the finish of the Wall Start when attaching it to the Guide. If your attaching to a bulk head, it is best to have wood inside your bulk head. If this isn’t possible and your attaching to a metal framing, be sure to not over torque your screws and strip the framing. The Bottom Track does not need attaching, for it is placed onto the Track Guide (after the Guide has been attached to the floor).

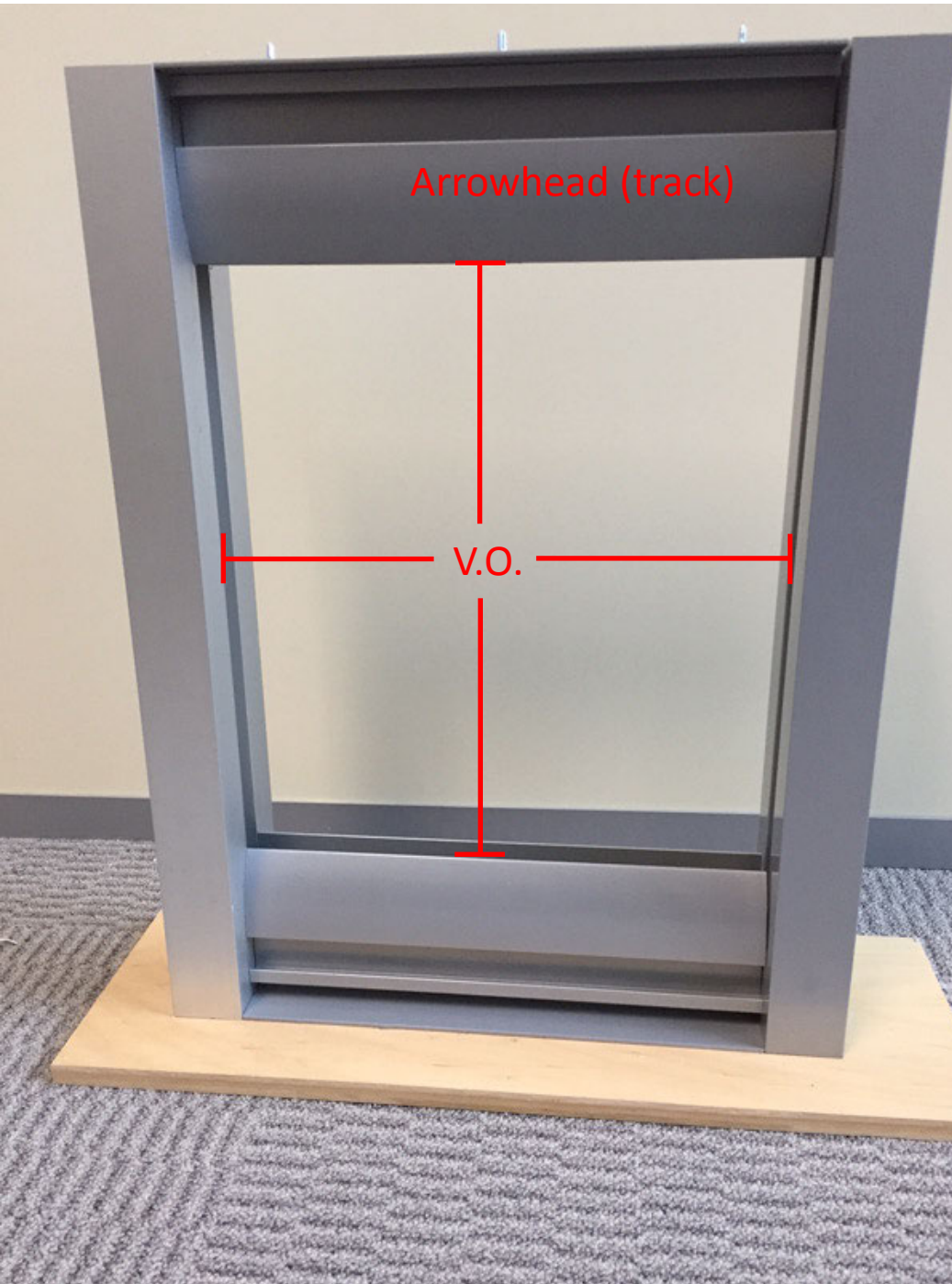
You will want to keep a 3/8” gap between track and guide for adjustment if needed.



**VIEW SERIES
SINGLE SIDELIGHT INSTALLATION
FRAME OPENING**



MEASURING GLASS FOR VIEW SERIES SINGLE SIDELIGHT INSTALLATION



For Height:

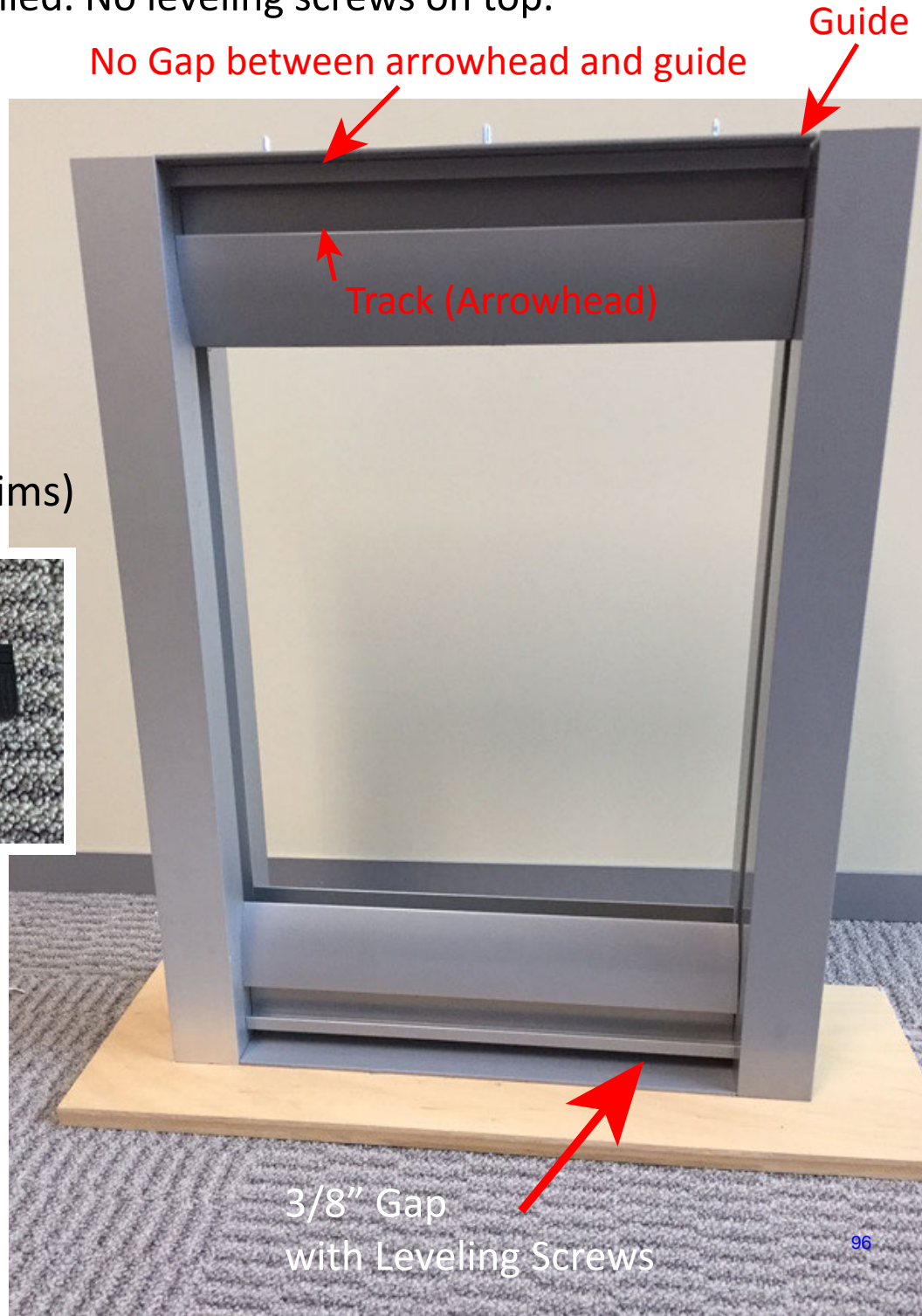
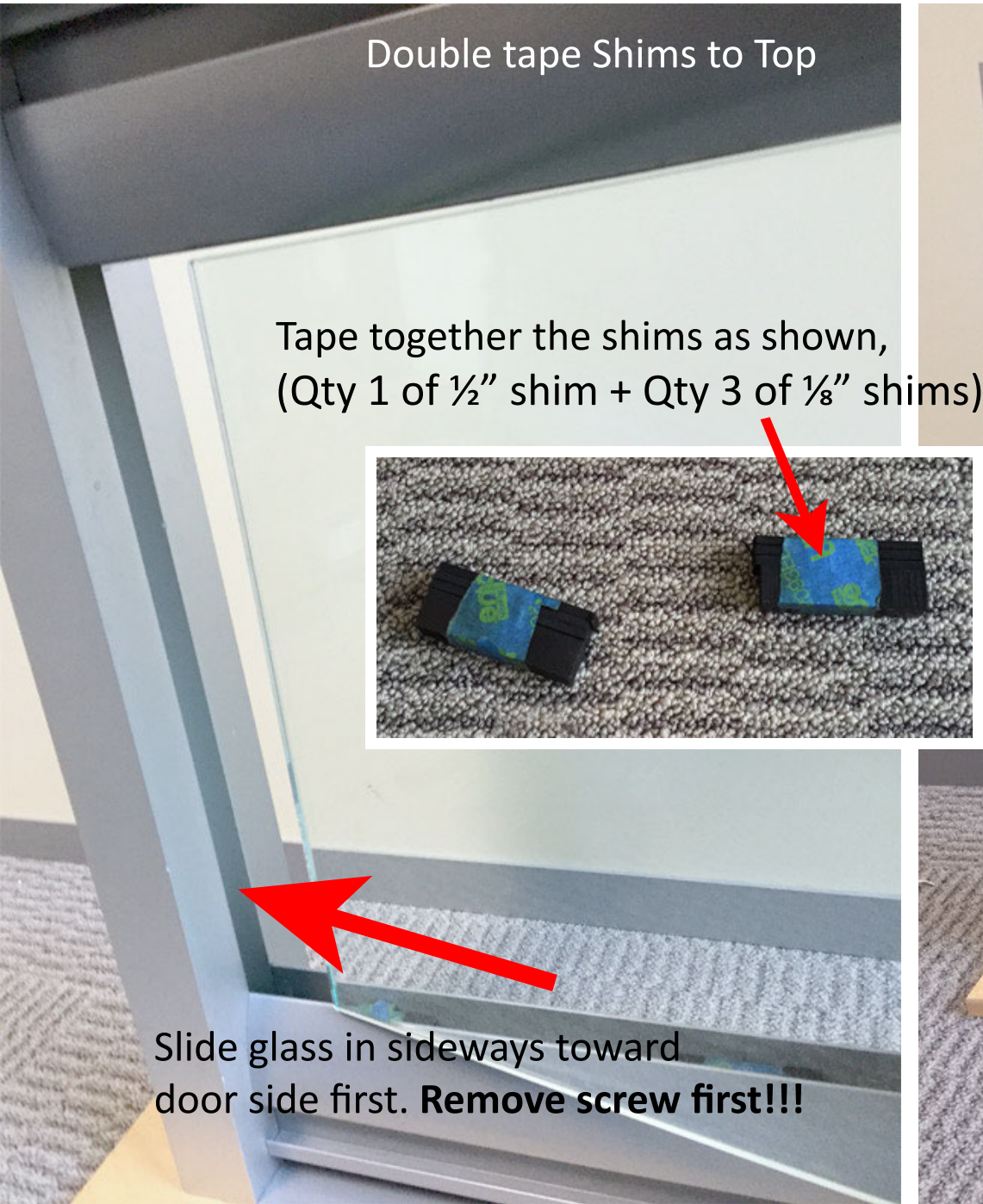
Measure Glass Visual Opening and subtract $\frac{1}{8}$ "

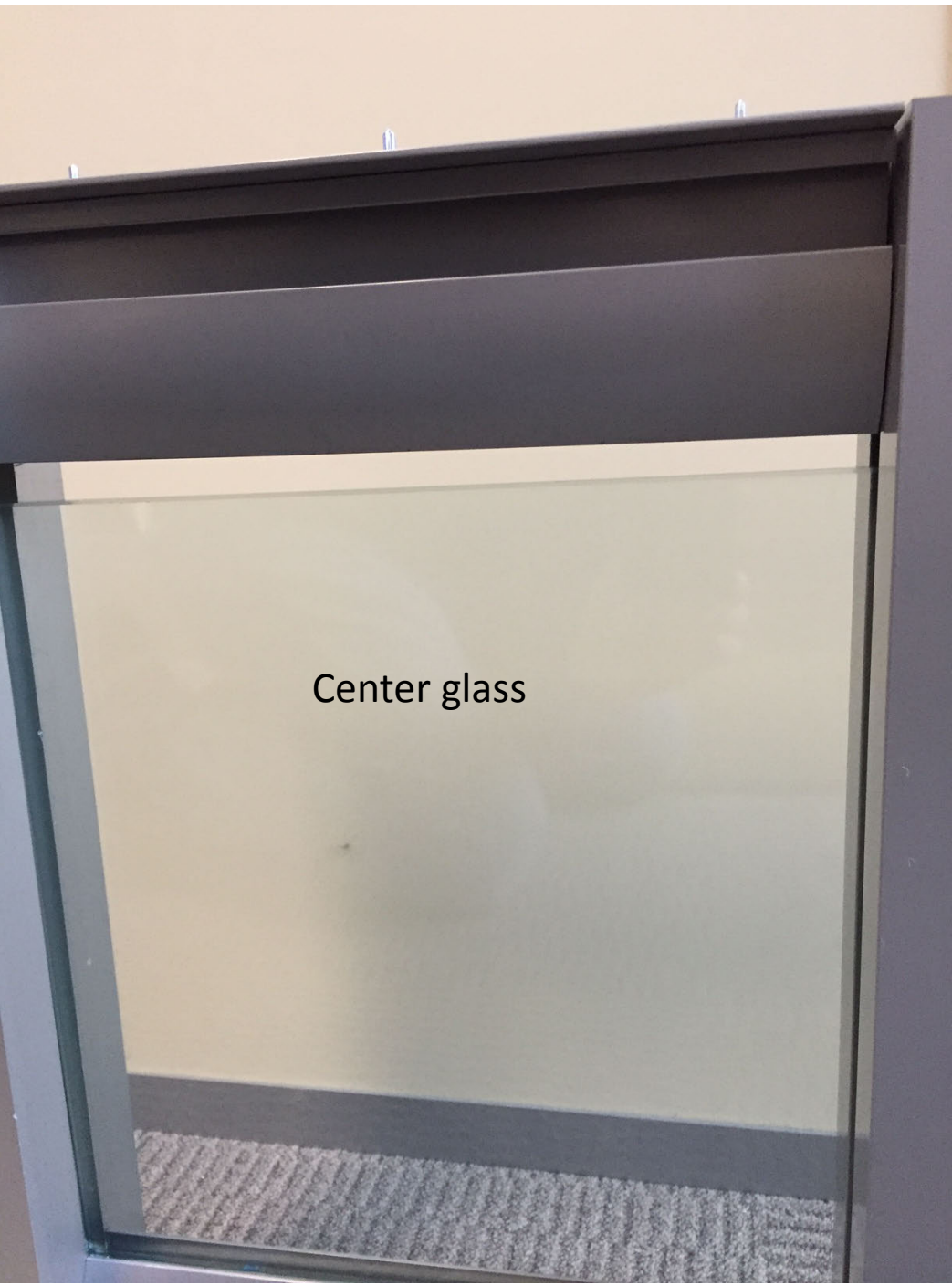
For Width:

Measure Glass Visual Opening and add $\frac{5}{8}$ "

Use the Smallest Measurement.

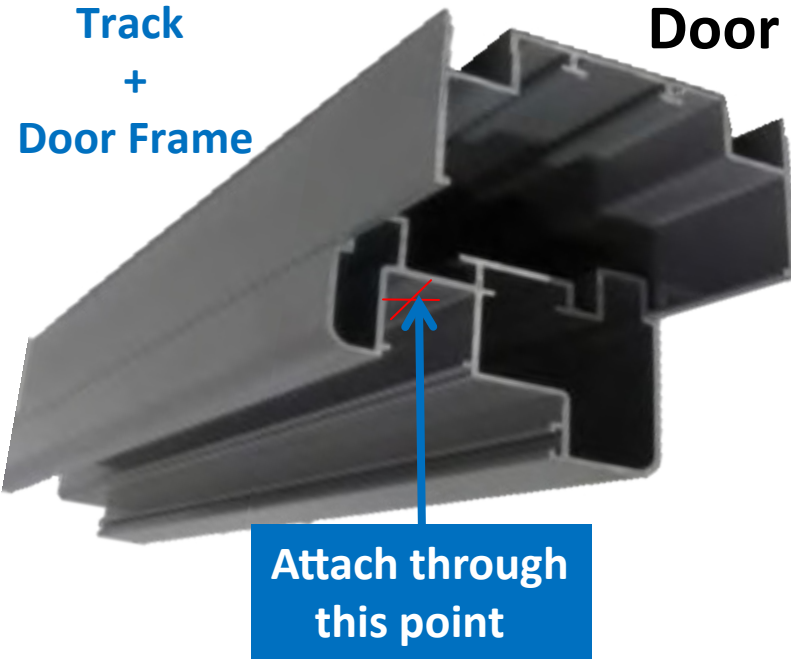
View Track (Arrowhead) is tight to Track Guide. 2½" screw holding until glass is installed. No leveling screws on top.





Door Frame Installation

Track
+
Door Frame



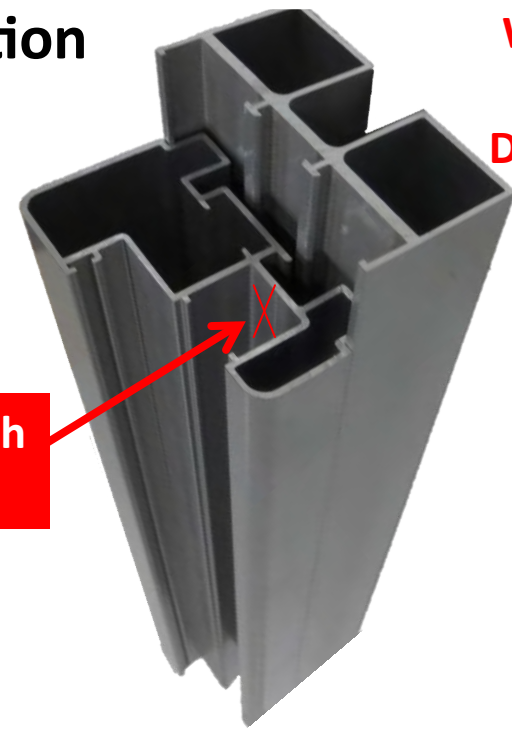
When installing the door header into the Flex track you will use (2) 2 1/2" self tapping screws to attach. Our door headers will always come mitered and cut to width.



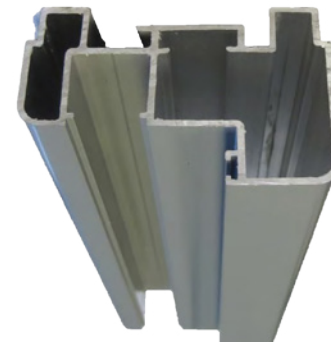
WHEN MEASURING DOOR FRAMES FOR FULL HEIGHT:
Measure from Floor to Track.
Hook Tape Measure onto second notch.

Wall Start
+
Door Frame

Attach through this point



When attaching the door legs to the stud side of the Wall start use the 1 1/4 self tappers. The door legs come with the miter on one side, our standard size is precut, but full height or custom sizes will need to be cut to size in the field.



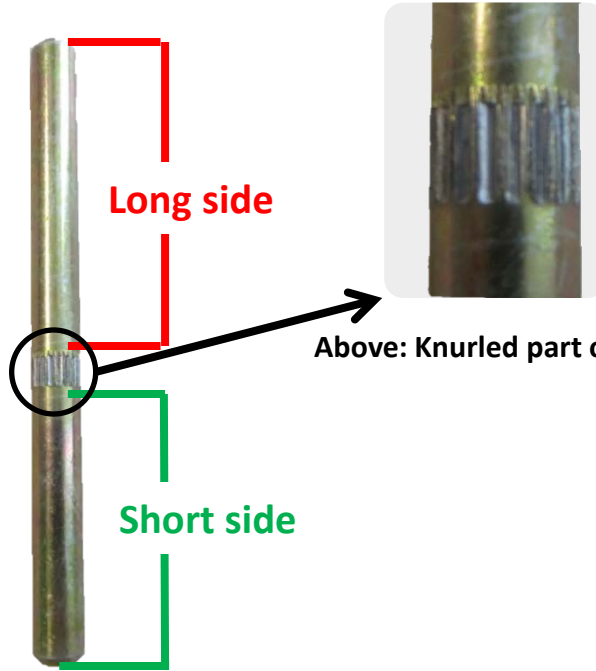
Door Frame

Door Kit



Hinge Assembly

If you look at the pin you will notice that the knurled part of the pin is not centered. When you put the pin in the hinge you will put the **short side down** in the hinge.



Above: Knurled part of pin

After you placed the pin in the hinge, gently tap the knurled part of the hinge down inside of the bottom hinge until the pin is flush at the bottom of hinge.

1.



2.



Pin sitting inside hinge

3.



Pin set into hinge flush
(This is the end result you want)

Attaching Hinge to Jamb

Door Placement and Prep

Once you have both parts of the hinges on, line the door up to the jamb, loosen the set screws, and then slide the jamb hinge into the door hinge. After all the hinges are lined up, adjust and set the height of your door.

After the hinges are assembled using the hinge plate, spacer and set screws, proceed to attach the bottom half of the hinge to the door frame like shown below.



After the hinge is installed place the washer over the pin.



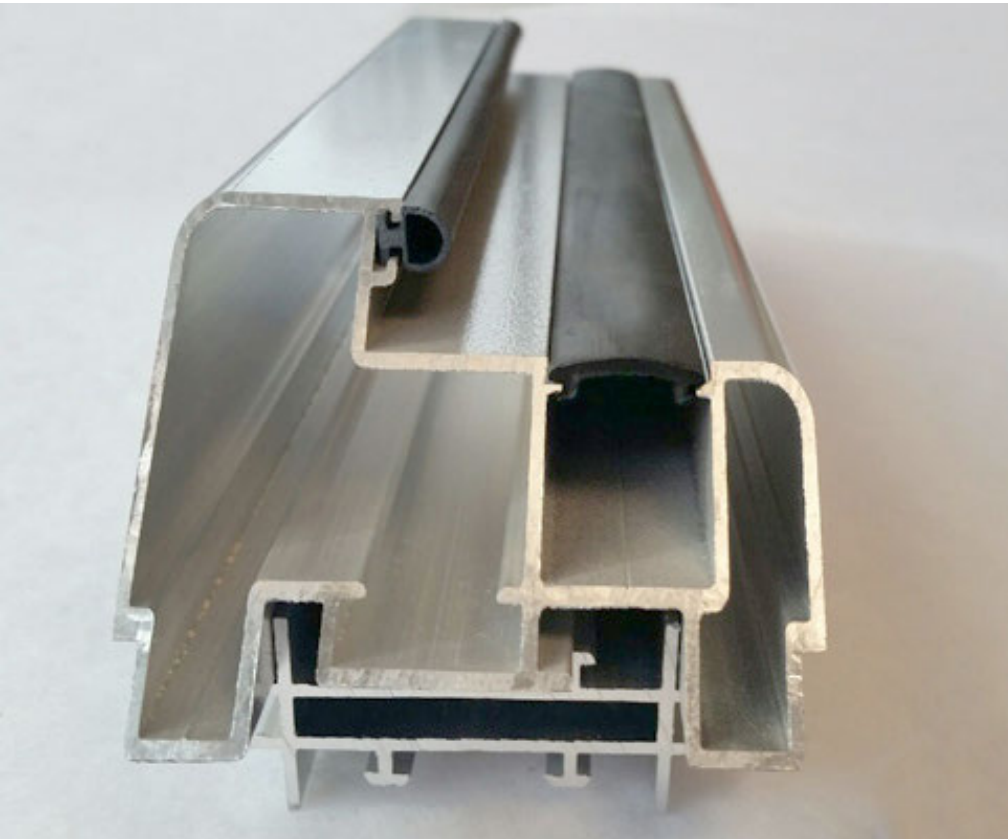
When installing the hinges to the door, use 5/32" bit to pre-drill holes before you attach hinge.

Spacing for the hinges are 6" from top & bottom of door, centering or equally spacing the hinges depending on how many hinges you have per door.

Then find top of door. Hinges will go above these marks, towards the top of door.

Seals and Strike Plate

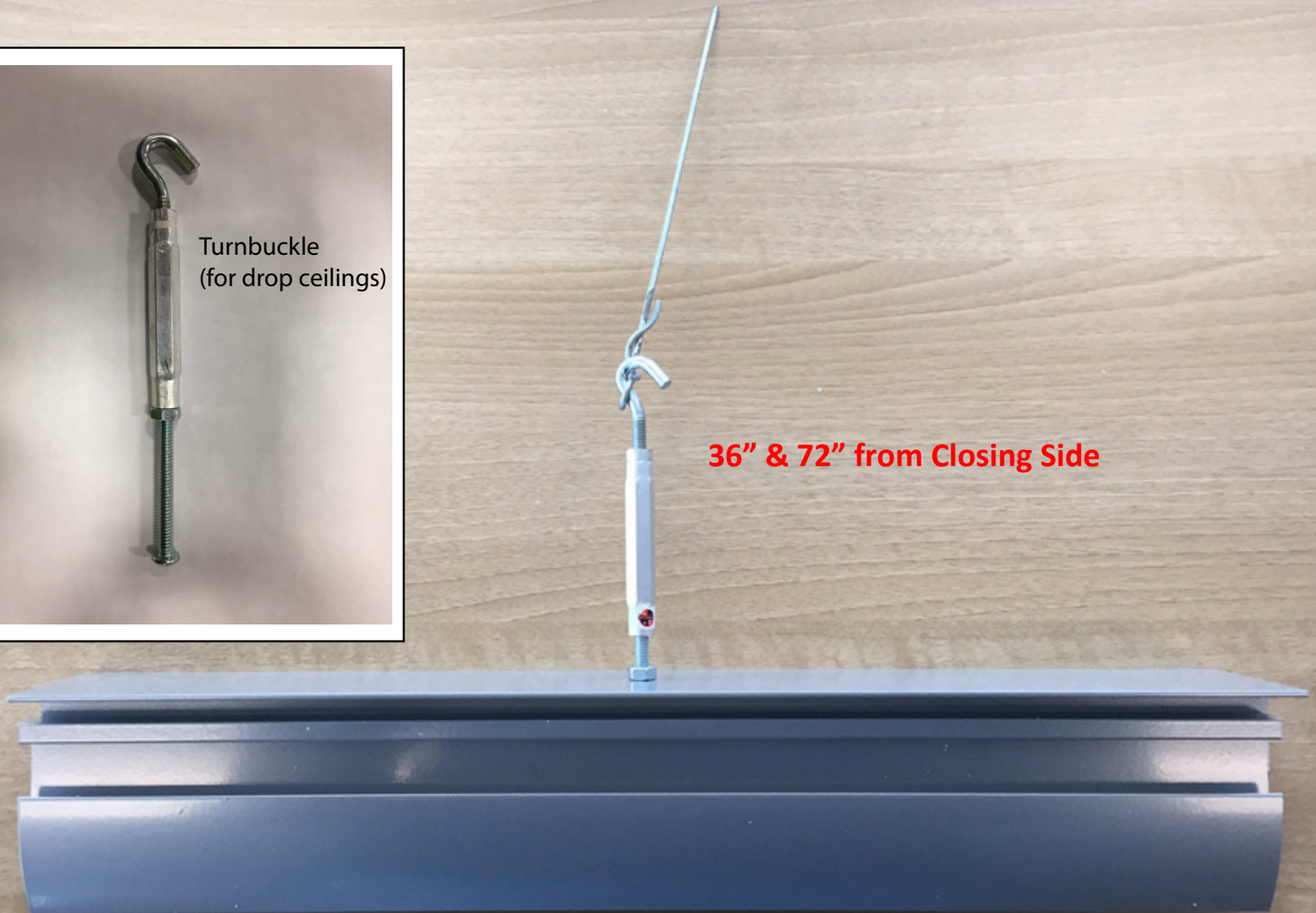
The strike plate is attached by snapping into the jamb. They can be adjusted up and down to line up with the latch.



Example of how our door seals set into our door frames.

NOTE: Strike Rubber will come preinstalled in door frame.

If attaching VIEW to a ceiling grid, you will need to add turnbuckle bracing as shown below.



VIEW SERIES

Measuring for Vertical Glass

Screw

When measuring the vertical measurements of the View Series, place your tape measure on the head of the screw inside the top track and measure to the very top of the bottom track, then subtract $\frac{1}{4}$ ".

- $\frac{1}{4}$ "

YOU WILL WANT TO TAKE MULTIPLE MEASUREMENTS ALONG THE LENGTH OF YOUR TRACK AT EACH SCREW HEAD.

***ALL Vertical Glass Measurements should be the same height. If they differ, either your top track or bottom track need to be re-leveled to ensure proper glass measurements and installation.**

Screw

G
L
A
S
S

$\frac{1}{8}$ "
SHIMS

$\frac{1}{2}$ "
SHIM

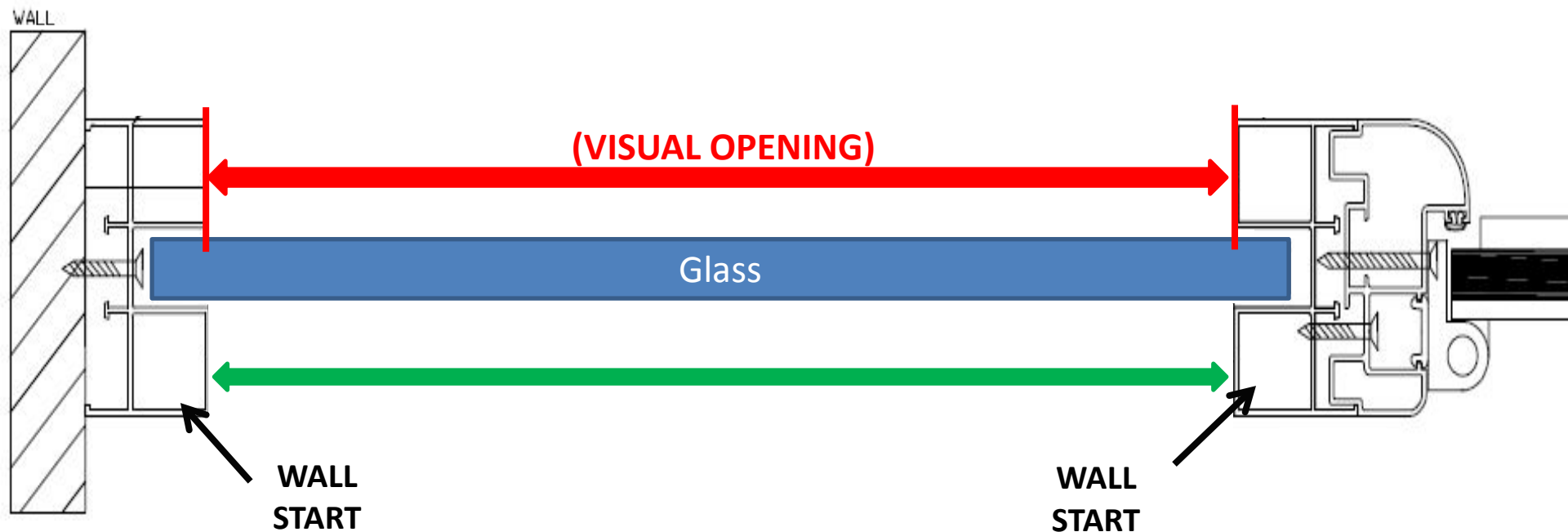
Example of Installed Glass

VIEW SERIES

Measuring for Horizontal Glass

- If your project has between 2 and 6 panes of glass in a partition you will need to measure the VO (visual opening) and add a $\frac{1}{2}$ " to your overall measurement. This total will then be divided by the number of panes of glass you have.

For example: If I had 4 panes of glass and my VO (visual opening) was 96" I would simply add $\frac{1}{2}$ " to that. I would then divide $96 \frac{1}{2}$ " by 4 giving myself $24 \frac{1}{8}$ " for each of the four panes of glass widths.



Note: If you have more than 6 panes of glass consult with the NxtWall team on how to measure the Width of your opening.