



## technical specifications guide

## technical specifications guide

CLICK ON THE TEXT BELOW TO JUMP TO PAGE,  
TO RETURN TO THE TABLE OF CONTENTS = CLICK THE NXTWALL LOGO

GUIDING PRINCIPLE .....	3
TYPES OF MODULATION .....	4

## SOLID PARTITIONS

FULL HEIGHT SOLID .....	5
-------------------------	---

## GLAZED PARTITIONS

FULL HEIGHT GLAZED (DOUBLE GLASS) .....	6
FULL HEIGHT GLAZED (SINGLE GLASS) .....	7
SOLID WITH TOP GLASS PANEL (DOUBLE GLASS) .....	8
SOLID WITH TOP GLASS PANEL (SINGLE GLASS) .....	9
SOLID, GLASS WITH TOP SOLID PANEL (DOUBLE GLASS) .....	10
SOLID, GLASS WITH TOP SOLID PANEL (SINGLE GLASS) .....	11

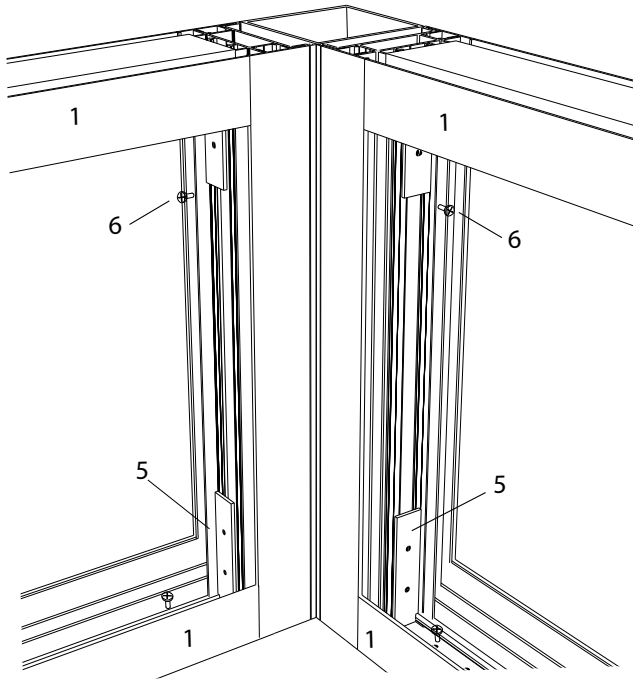
## ANGLES

2 DIRECTION ANGLE (VARIABLE) .....	12
2 DIRECTION ANGLE .....	13
3 DIRECTION ANGLE (VARIABLE) .....	14
3 DIRECTION ANGLE .....	15
4 DIRECTION WITH ANGLES .....	16-17
SLIDING DOOR ASSEMBLY .....	18
FILLER MODULE BETWEEN 2 DOORS .....	19

## DOORS

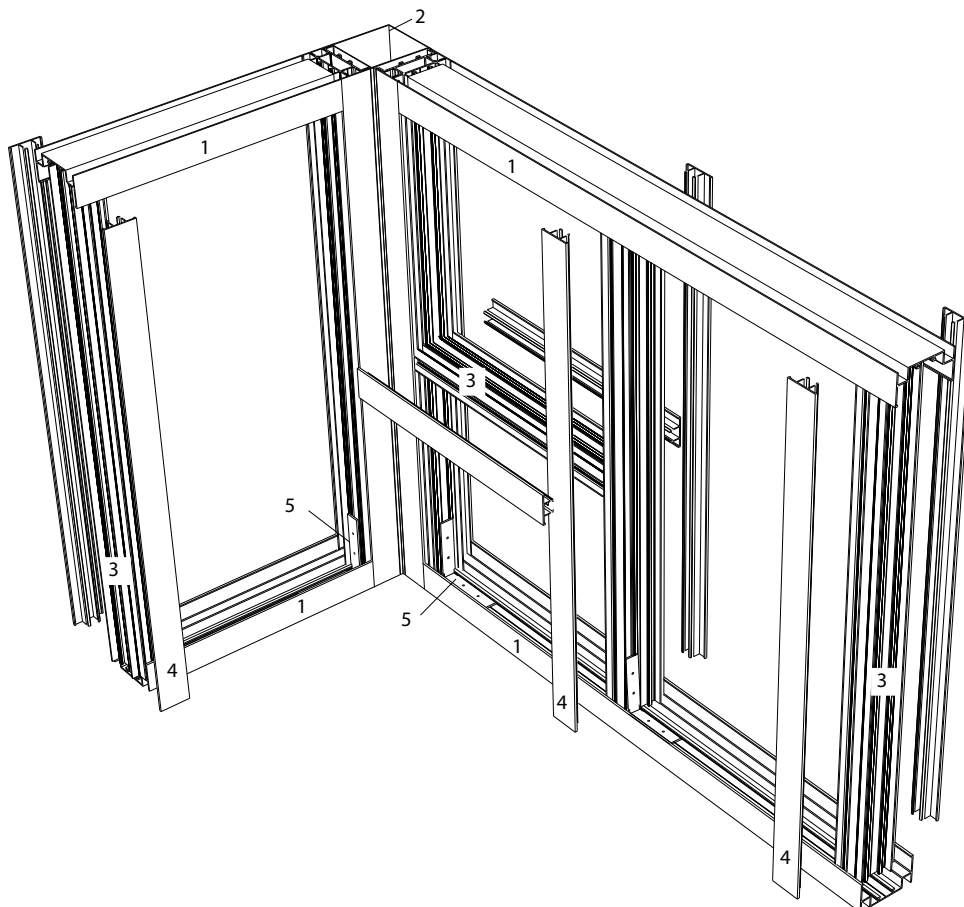
DOOR FRAME ASSEMBLY .....	20
HINGE INSTALLATION .....	21
SINGLE DOOR (WOOD OR ALUMINUM) .....	22
SINGLE GLASS DOOR .....	23
DOUBLE DOOR (WOOD OR ALUMINUM) .....	24
DOUBLE GLASS DOOR .....	25

PROFILES AND ACCESSORIES .....	26-27
APPENDIX .....	28

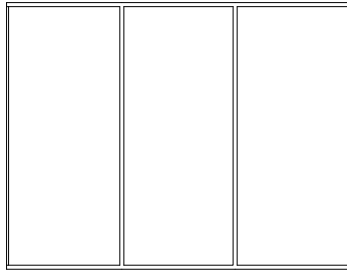


#### PROFILES

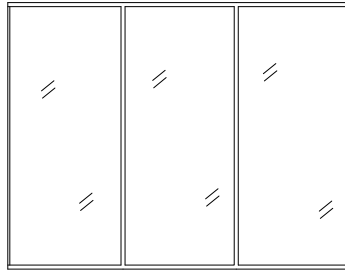
- |   |                                    |
|---|------------------------------------|
| 1 | NW 80-40 Top and bottom track      |
| 2 | NW 78-78 Square Post               |
| 3 | NW 74-40 or NW 72-27 Standard stud |
| 4 | NW 40-17 or NW 27-15P Trim         |
| 5 | NW 90-80 Flat angle bracket        |
| 6 | Angle bracket fixation screw       |



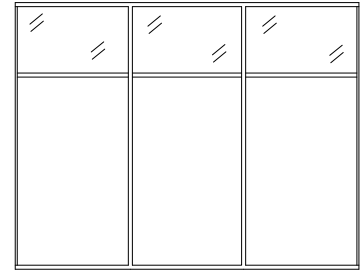
## TYPES OF MODULATION



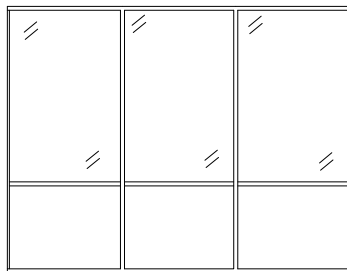
Full Height Solid



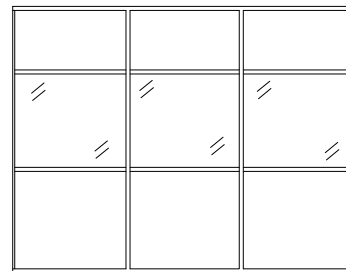
Full Height Glazed



Solid with Top Glass Panel  
(Clerestory)

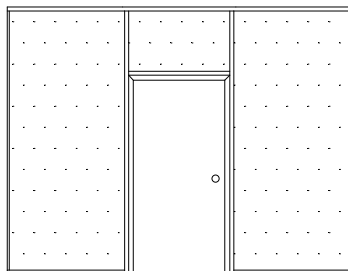


Half Glazed

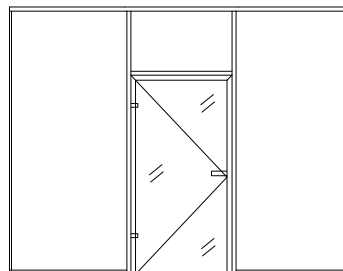


Solid, Glass with Top  
Solid Panel

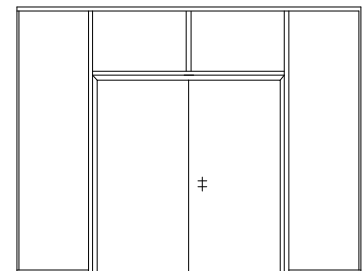
## DOOR MODULATIONS



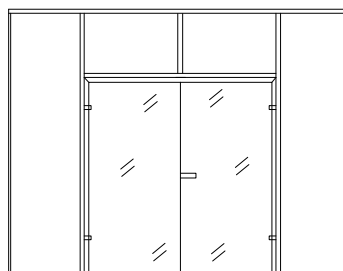
Single Door  
(Wood or Aluminum)



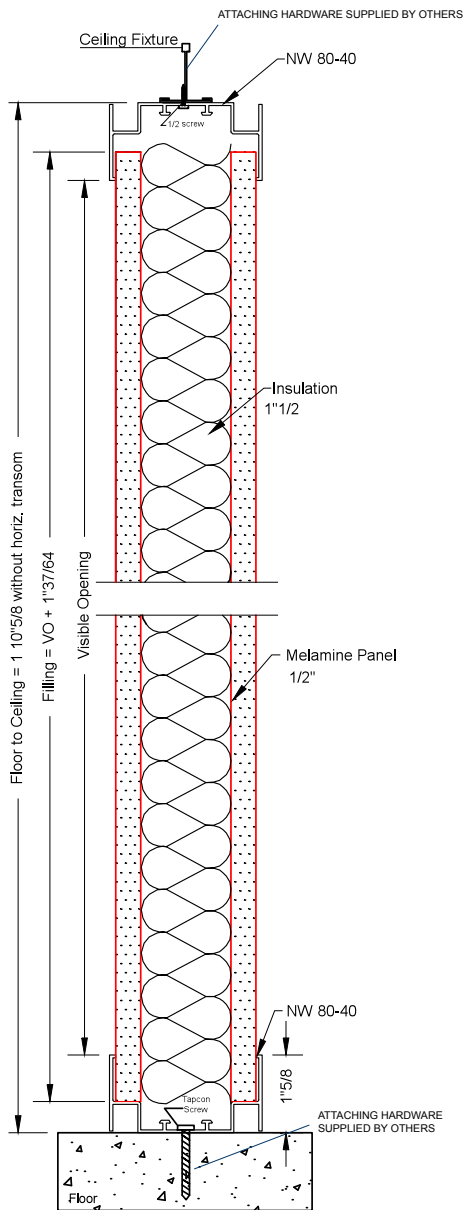
Single Frameless Glass  
Door



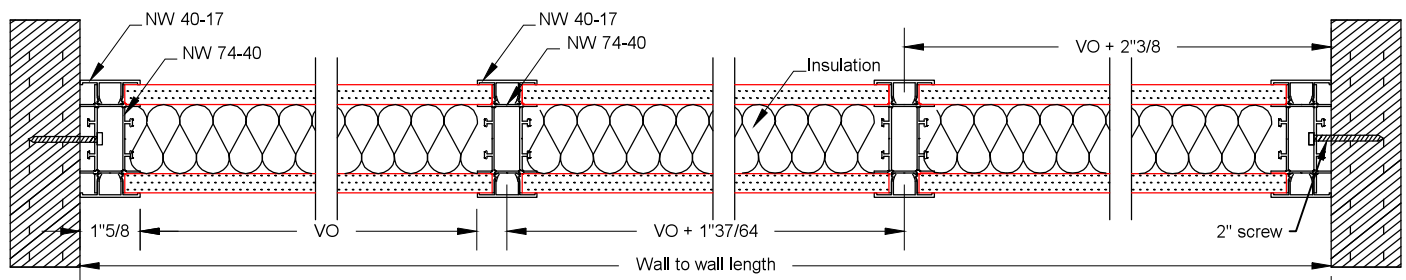
Double Door  
(Wood or Aluminum)



Double Frameless Glass Door



Detail A-A



Detail B-B

#### PROFILES



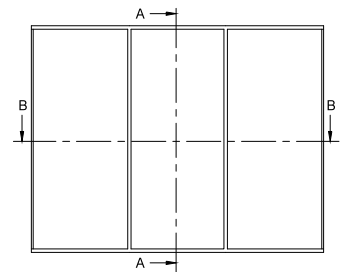
NW 80-40 Top and bottom track



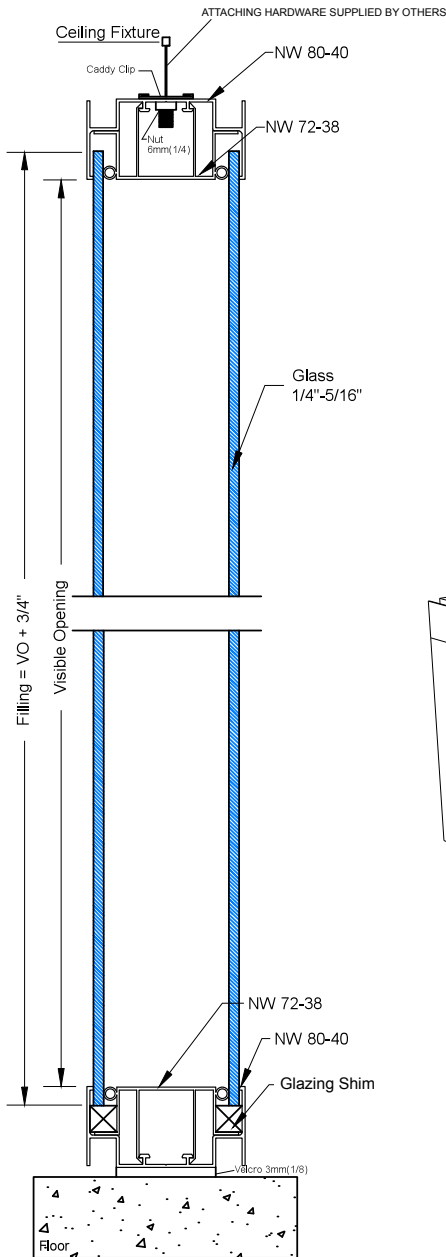
NW 74-40 or NW 72-27 Standard stud



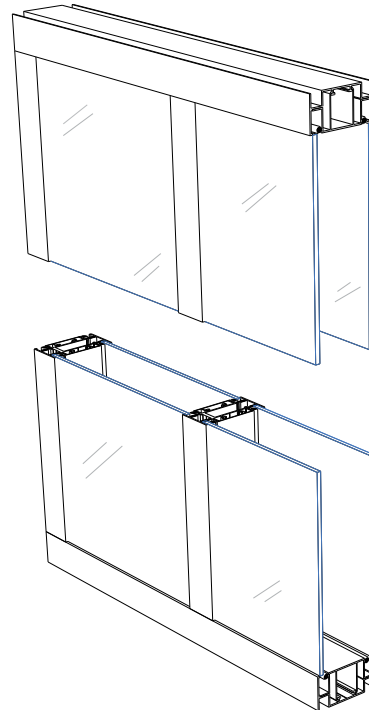
NW 40-17 or NW 27-15P Trim







Detail A-A



#### PROFILES



NW 80-40 Top and bottom track



NW 74-40 or NW 72-27 Standard stud



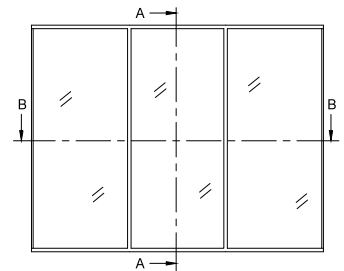
NW 40-17 or NW 27-15P Trim



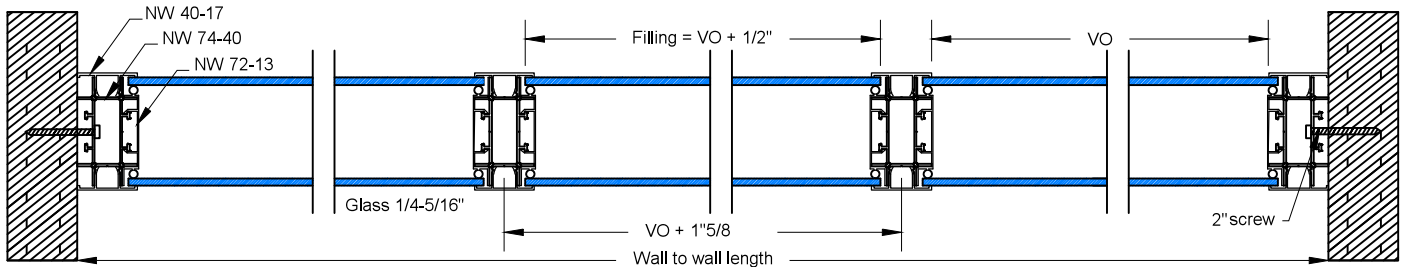
NW 72-13 PVC glazing bead for studs

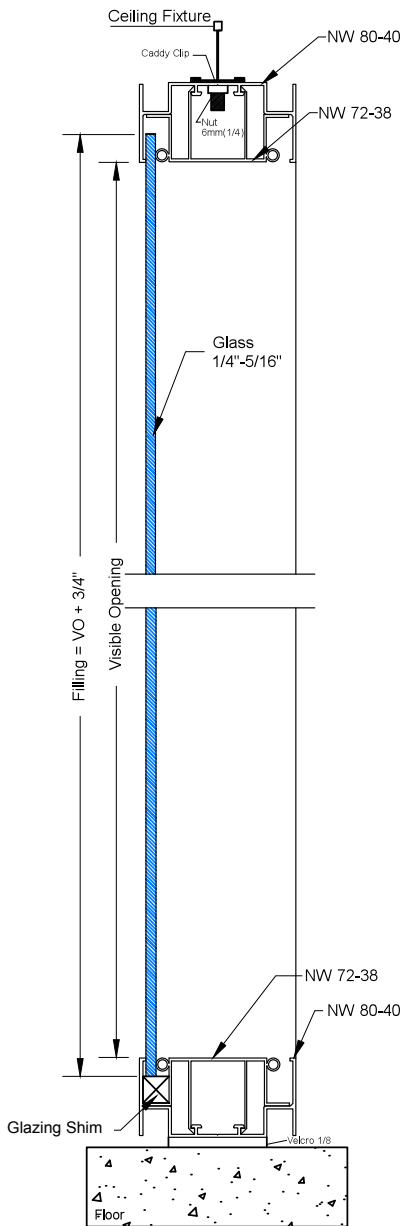


NW 72-38 PVC glazing bead for tracks

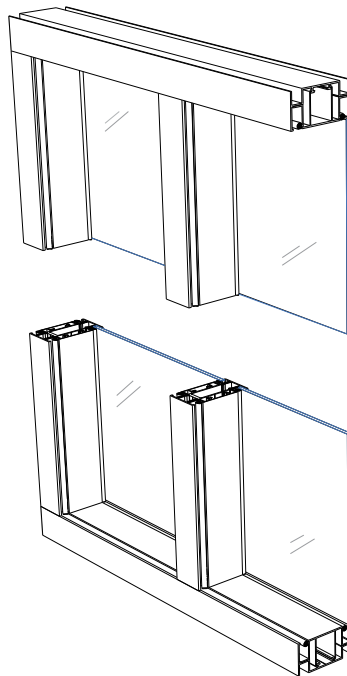


Detail B-B





Detail A-A



### PROFILES



NW 80-40 Top and bottom track



NW 74-40 or NW 72-27 Standard stud



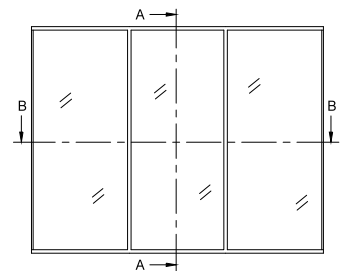
NW 40-17 or NW 27-15P Trim



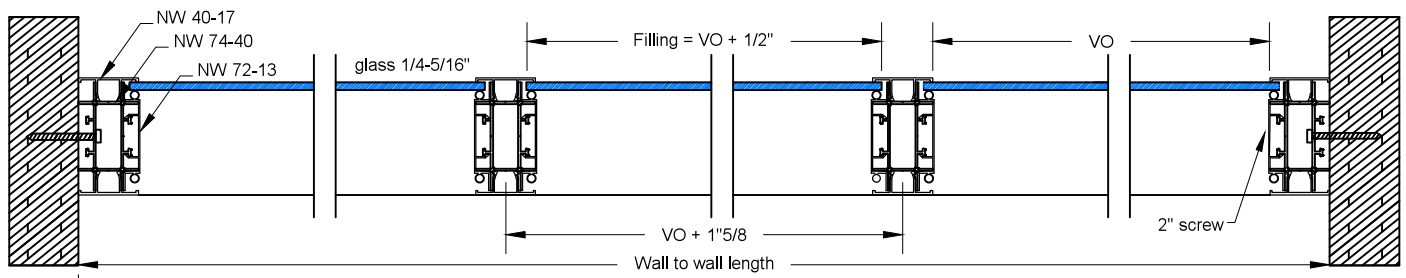
NW 72-13 PVC glazing bead for studs

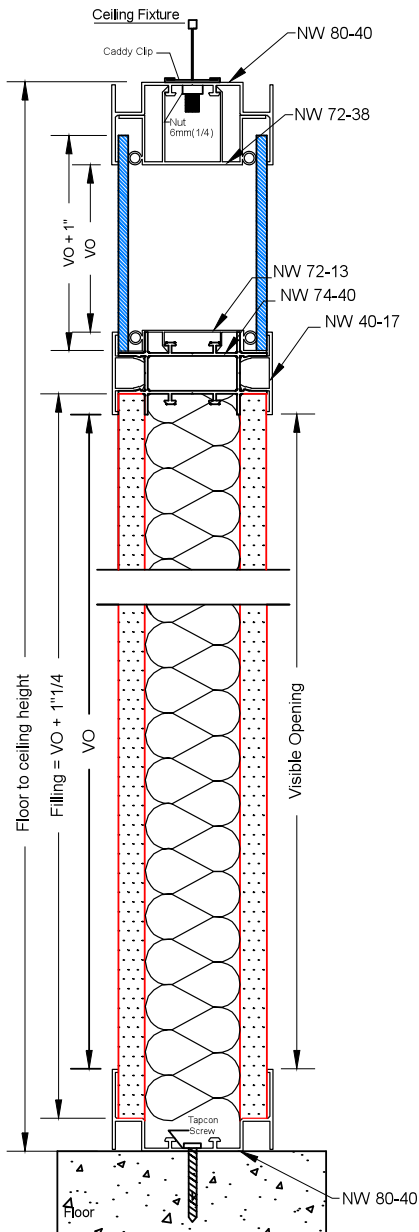


NW 72-38 PVC glazing bead for tracks

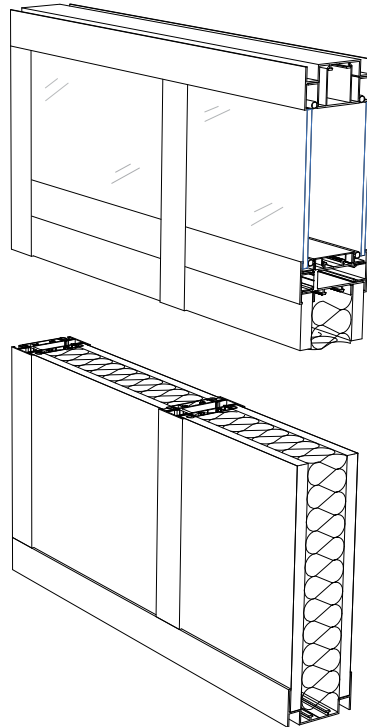


Detail B-B





Detail A-A



### PROFILES



NW 80-40 Top and bottom track



NW 74-40 or NW 72-27 Standard stud



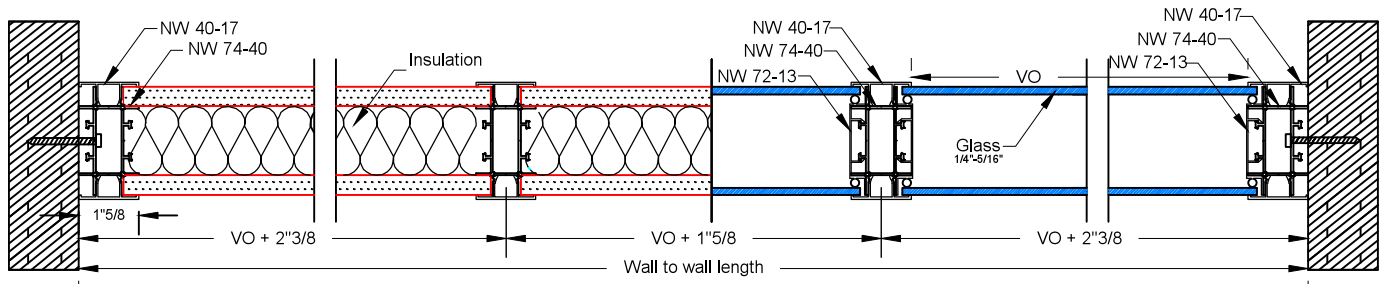
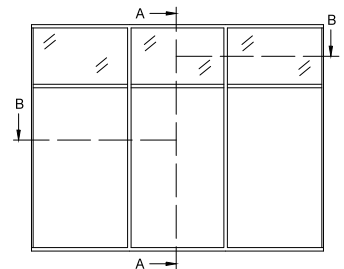
NW 40-17 or NW 27-15P Trim



NW 72-13 PVC glazing bead for studs

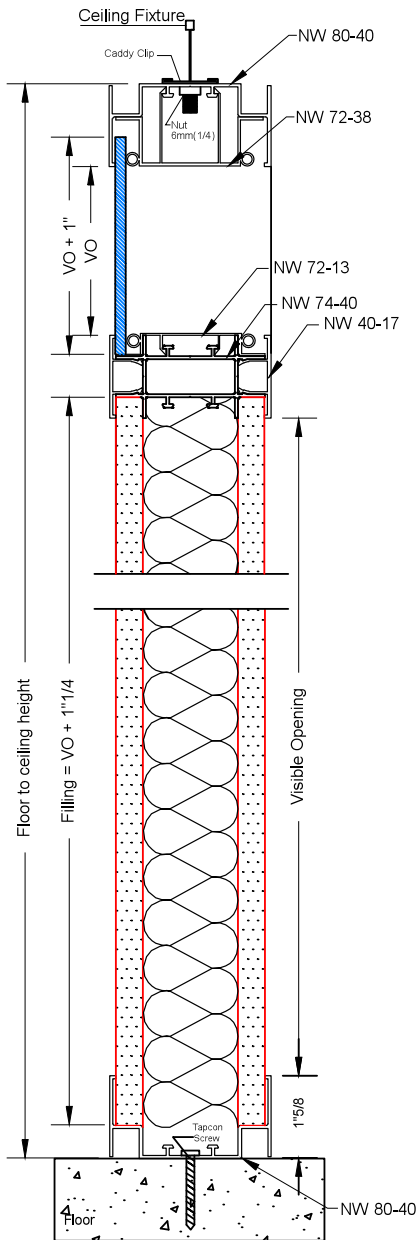


NW 72-38 PVC glazing bead for tracks

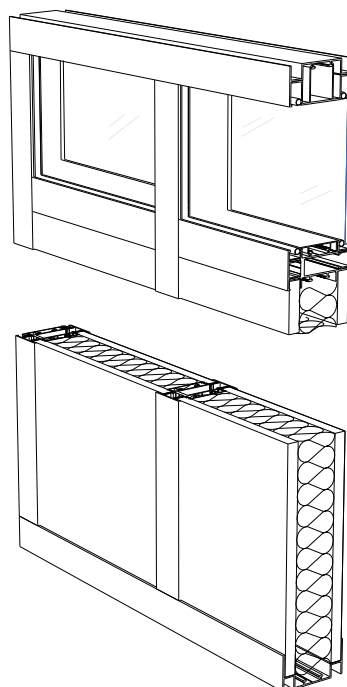


Detail B-B





Detail A-A



#### PROFILES



NW 80-40 Top and bottom track



NW 74-40 or NW 72-27 Standard stud



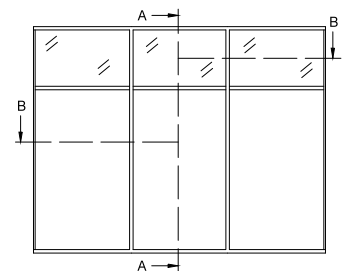
NW 40-17 or NW 27-15P Trim



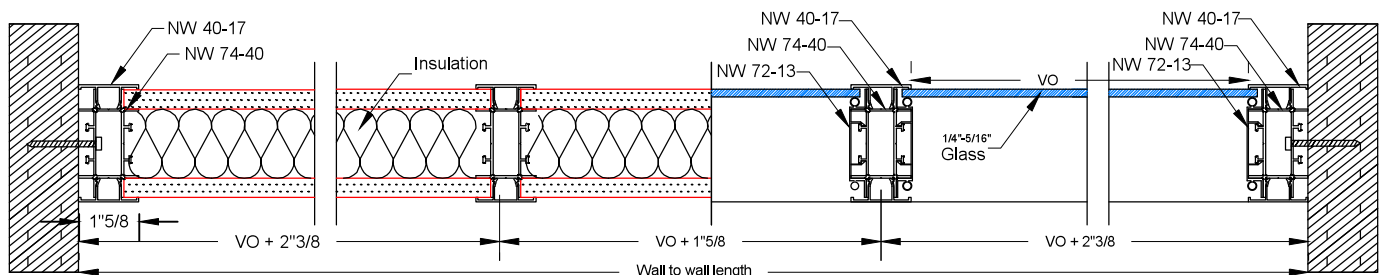
NW 72-13 PVC glazing bead for studs

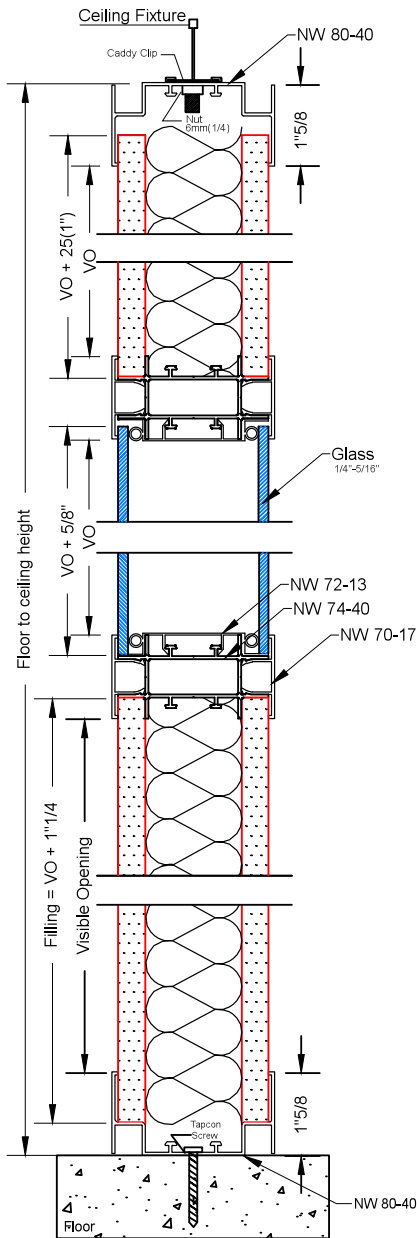


NW 72-38 PVC glazing bead for tracks

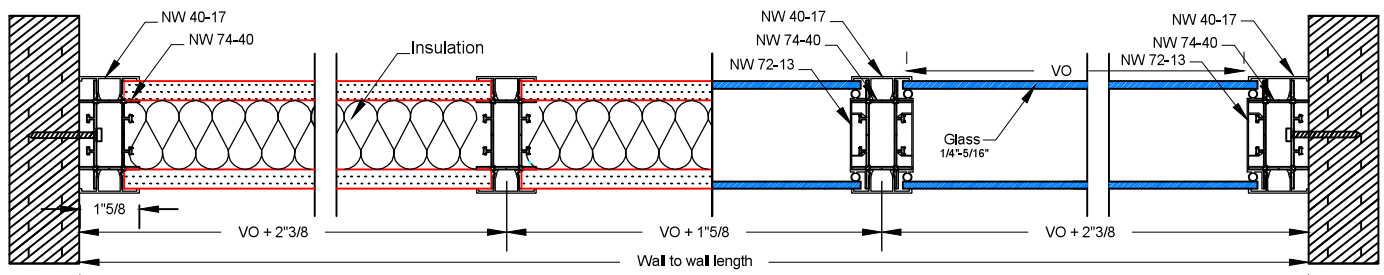


Detail B-B





Detail A-A



Detail B-B

### PROFILES



NW 80-40 Top and bottom track



NW 74-40 or NW 72-27 Standard stud



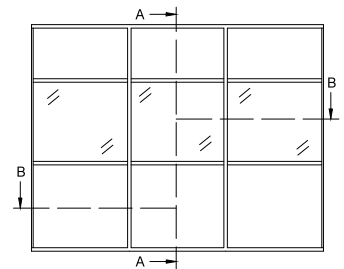
NW 40-17 or NW 27-15P Trim

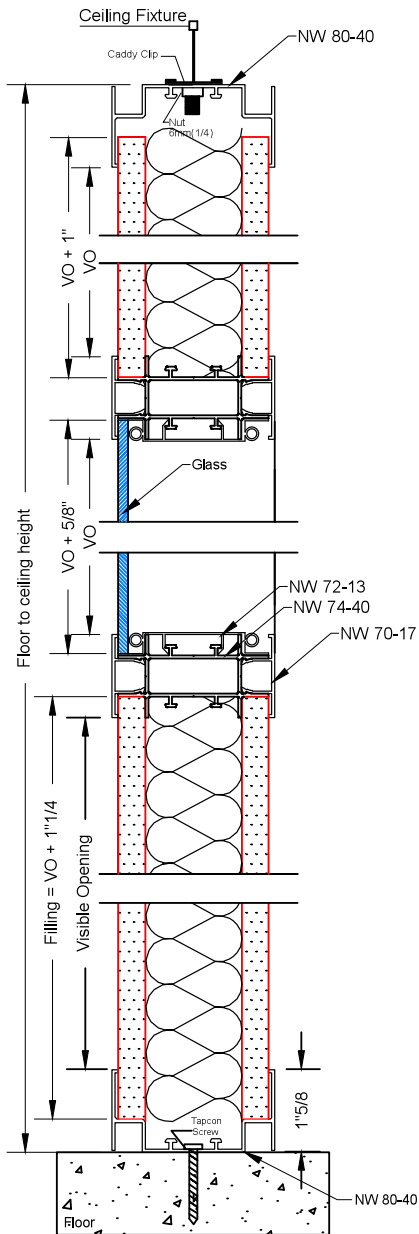


NW 72-13 PVC glazing bead for studs

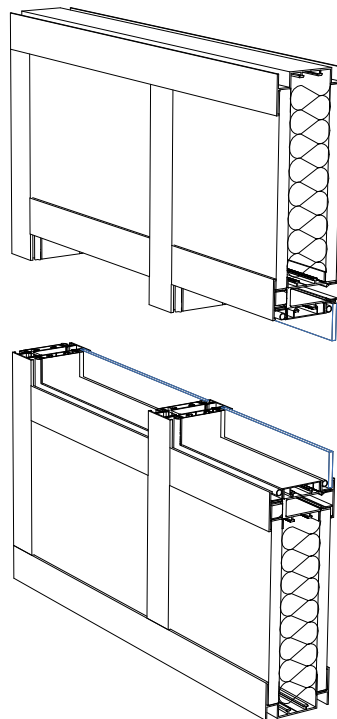


NW 72-38 PVC glazing bead for tracks





Detail A-A



### PROFILES



NW 80-40 Top and bottom track



NW 74-40 or NW 72-27 Standard stud



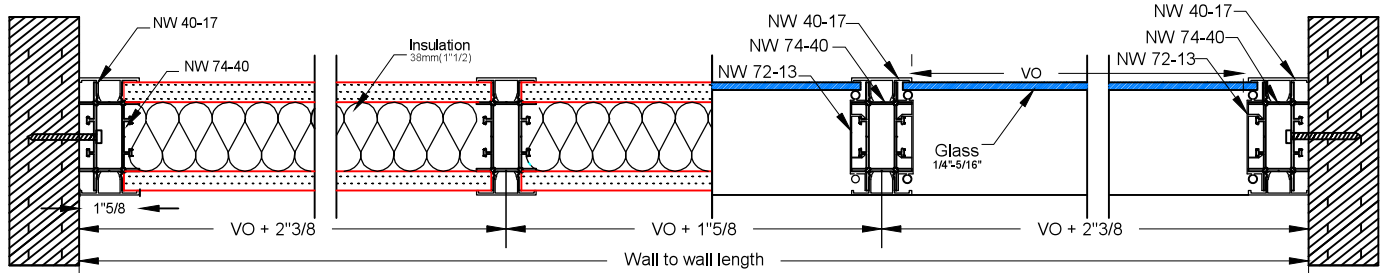
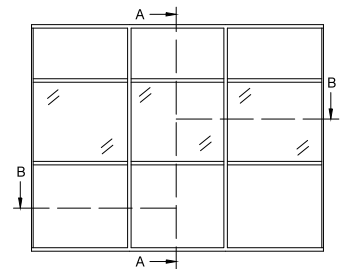
NW 40-17 or NW 27-15P Trim



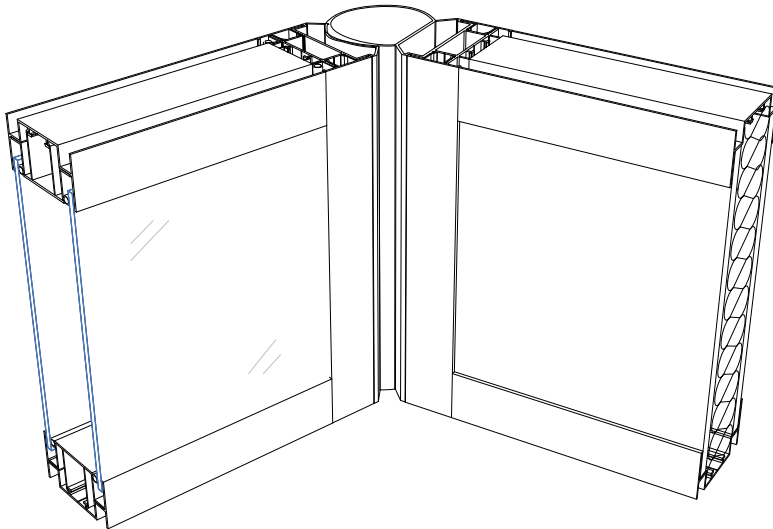
NW 72-13 PVC glazing bead for studs



NW 72-38 PVC glazing bead for tracks



Detail B-B



# PROFILES



NW 80-40 Top and bottom track



NW 74-40 or NW 72-27 Standard stud



NW 40-17 or NW 27-15P Trim



NW 72-13 PVC glazing bead for studs



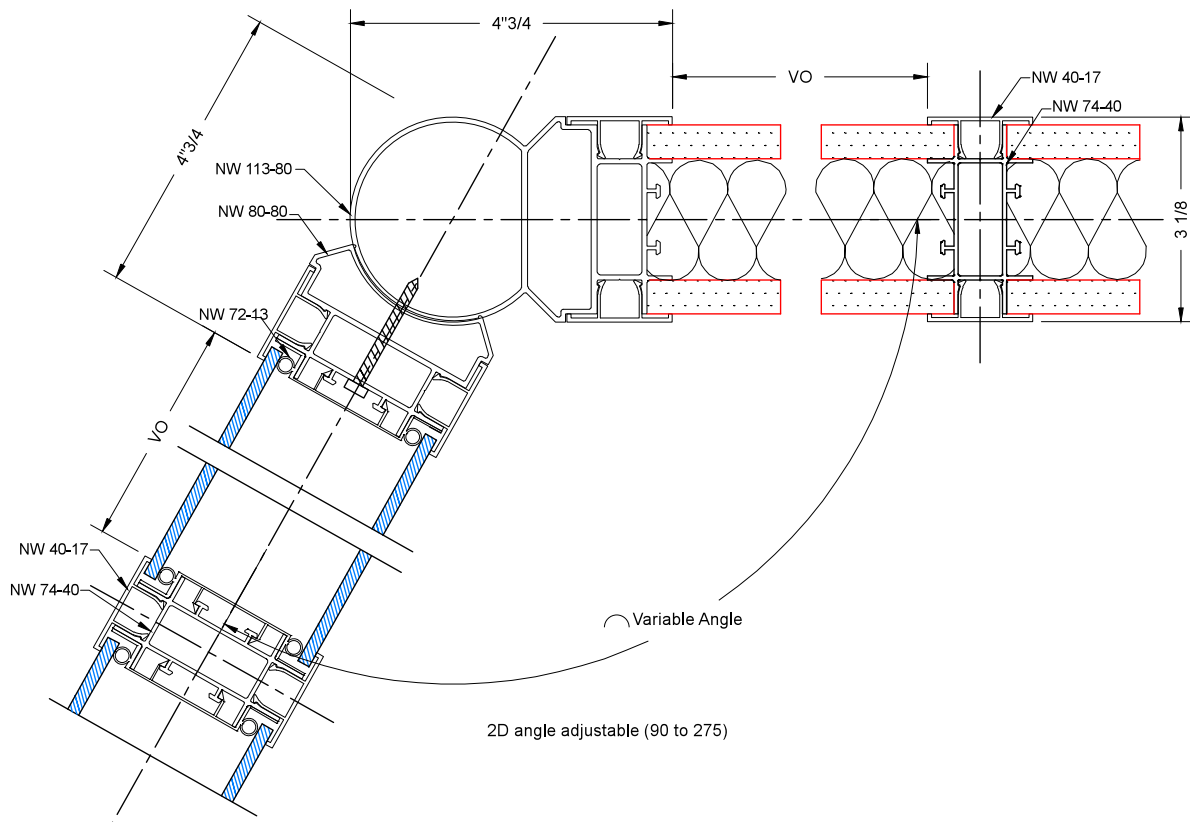
NW 72-38 PVC glazing bead for tracks

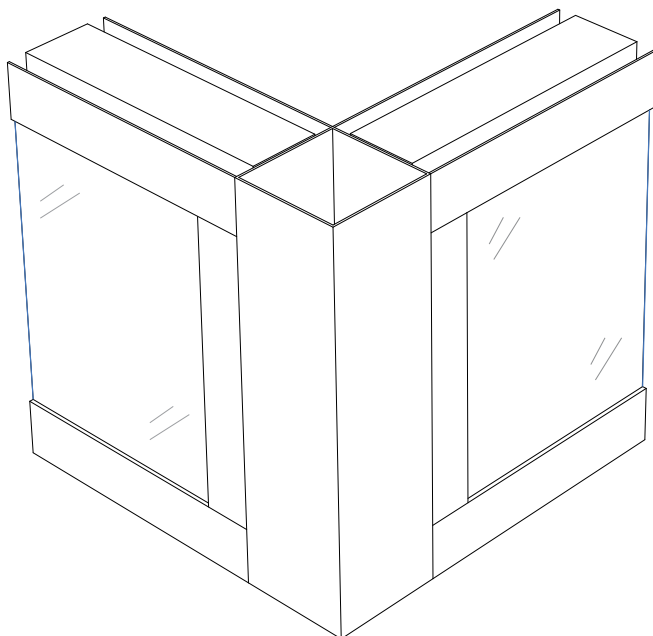


NW 80-80 Female angle (variable)



NW 113-80 Male angle (variable)



**PROFILES**

NW 80-40 Top and bottom track



NW 74-40 or NW 72-27 Standard stud



NW 40-17 or NW 27-15P Trim



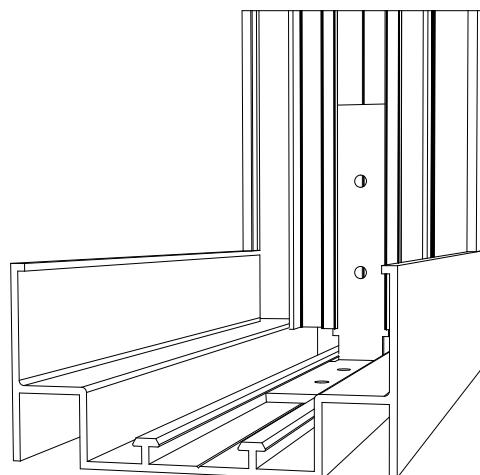
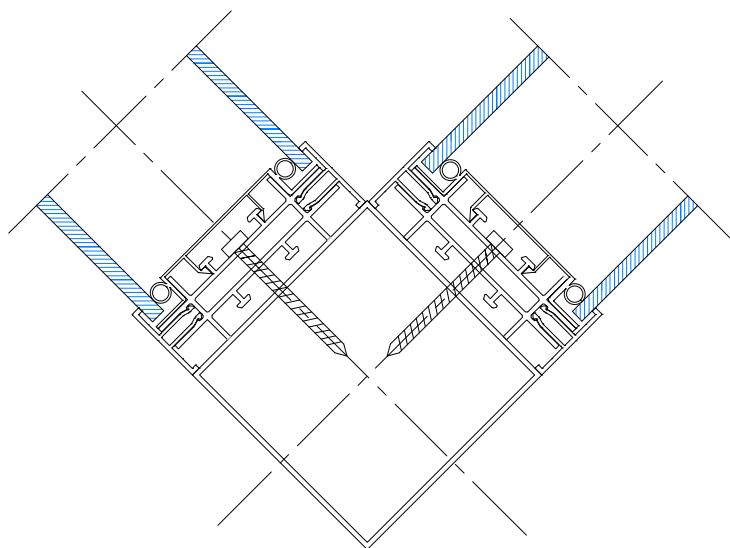
NW 72-13 PVC glazing bead for studs

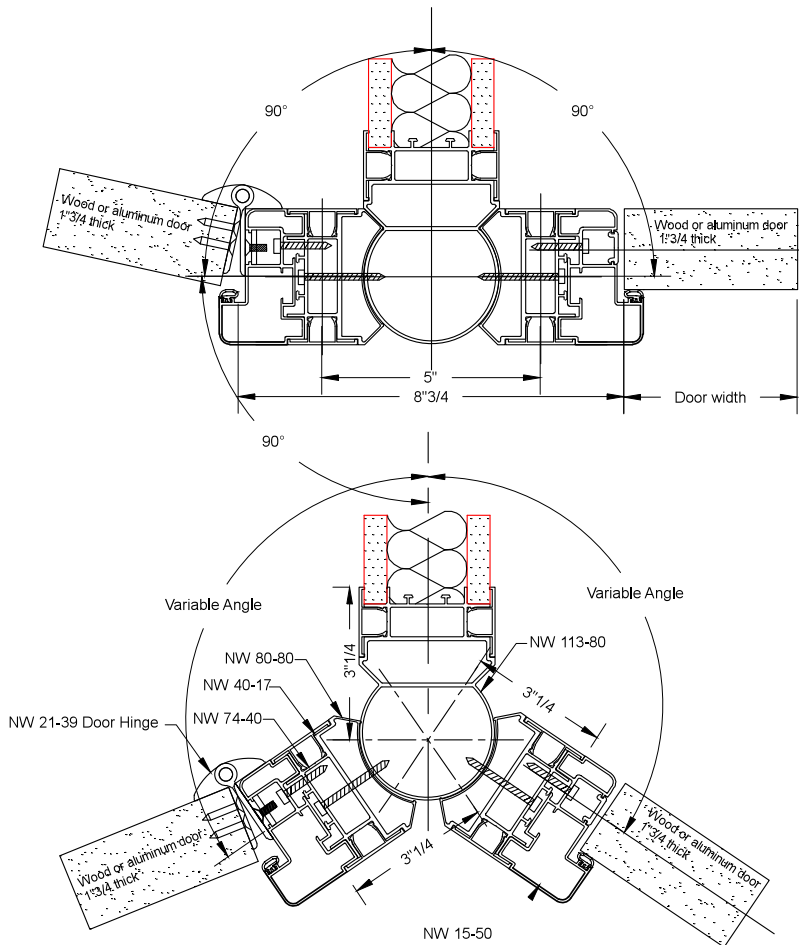


NW 72-38 PVC glazing bead for tracks



NW 78-78 Square post





# PROFILES



NW 80-40 Top and bottom track



NW 74-40 or NW 72-27 Standard stud



NW 40-17 or NW 27-15P Trim



NW 72-13 PVC glazing bead for studs



NW 72-38 PVC glazing bead for tracks



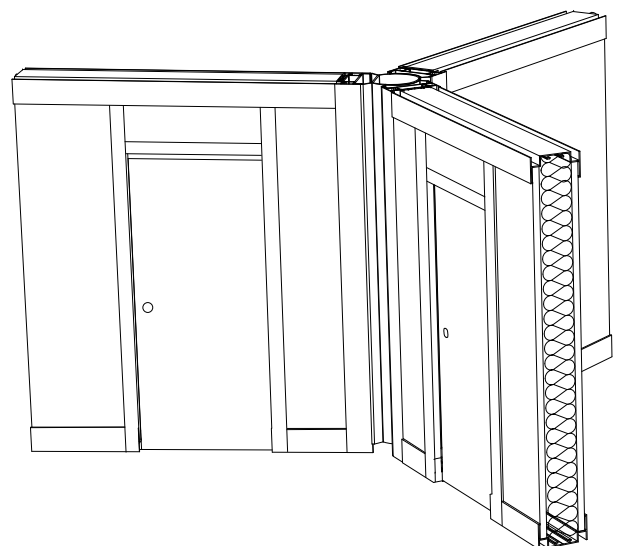
NW 80-80 Female angle (variable)



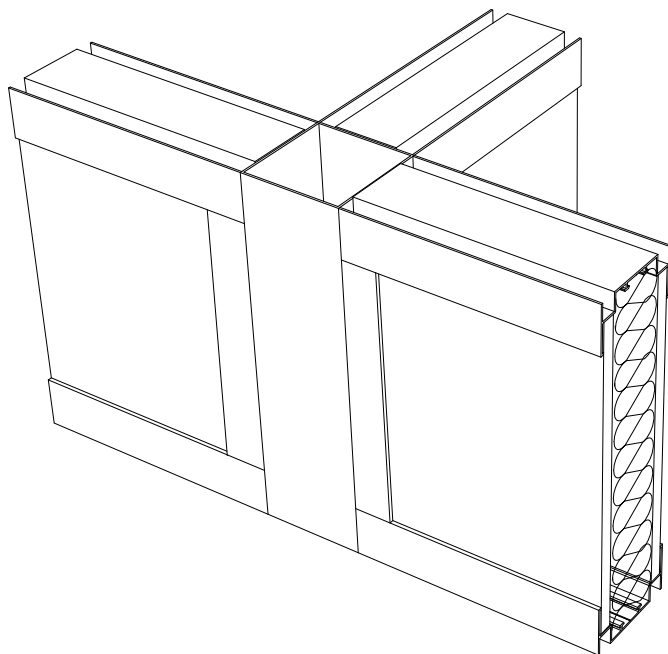
NW 113-80 Male angle (variable)



NW 15-50 Door frame (reversible)





**PROFILES**

NW 80-40 Top and bottom track



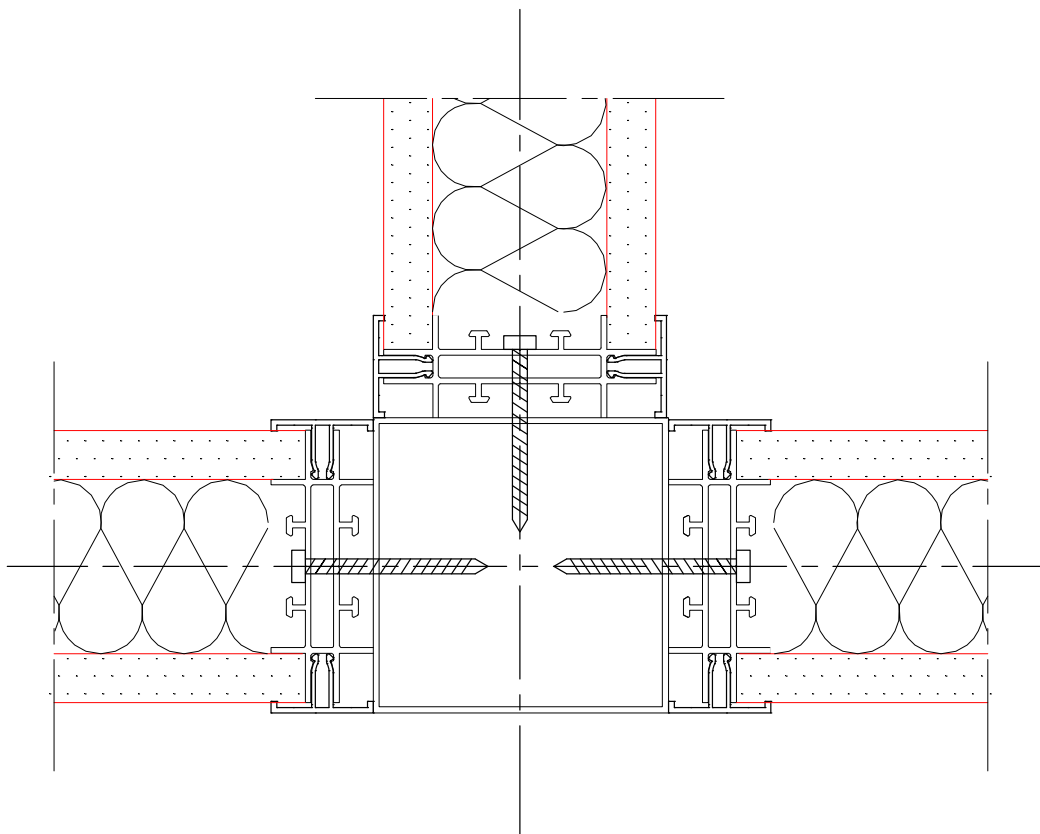
NW 74-40 or NW 72-27 Standard stud

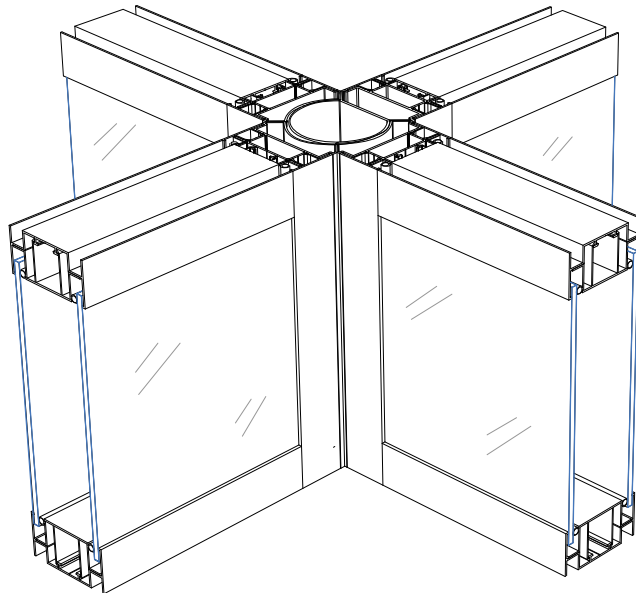


NW 40-17 or NW 27-15P Trim



NW 78-78 Square post





#### PROFILES



NW 80-40 Top and bottom track



NW 74-40 or NW 72-27 Standard stud



NW 40-17 or NW 27-15P Trim



NW 72-13 PVC glazing bead for studs



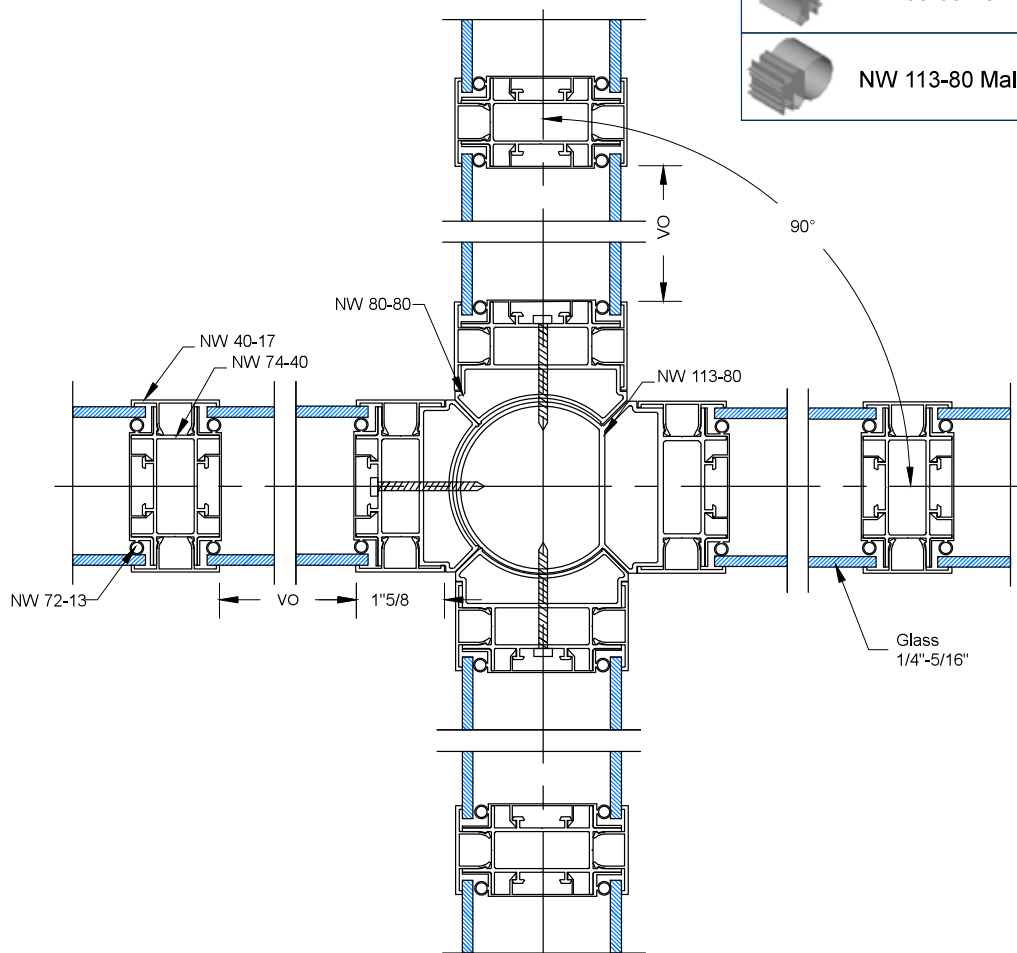
NW 72-38 PVC glazing bead for tracks

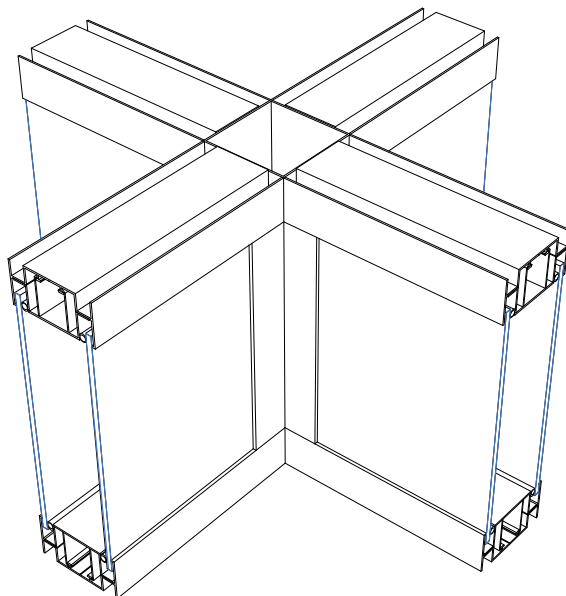


NW 80-80 Female angle (variable)



NW 113-80 Male angle (variable)





# PROFILES



NW 80-40 Top and bottom track



NW 74-40 or NW 72-27 Standard stud



NW 40-17 or NW 27-15P Trim



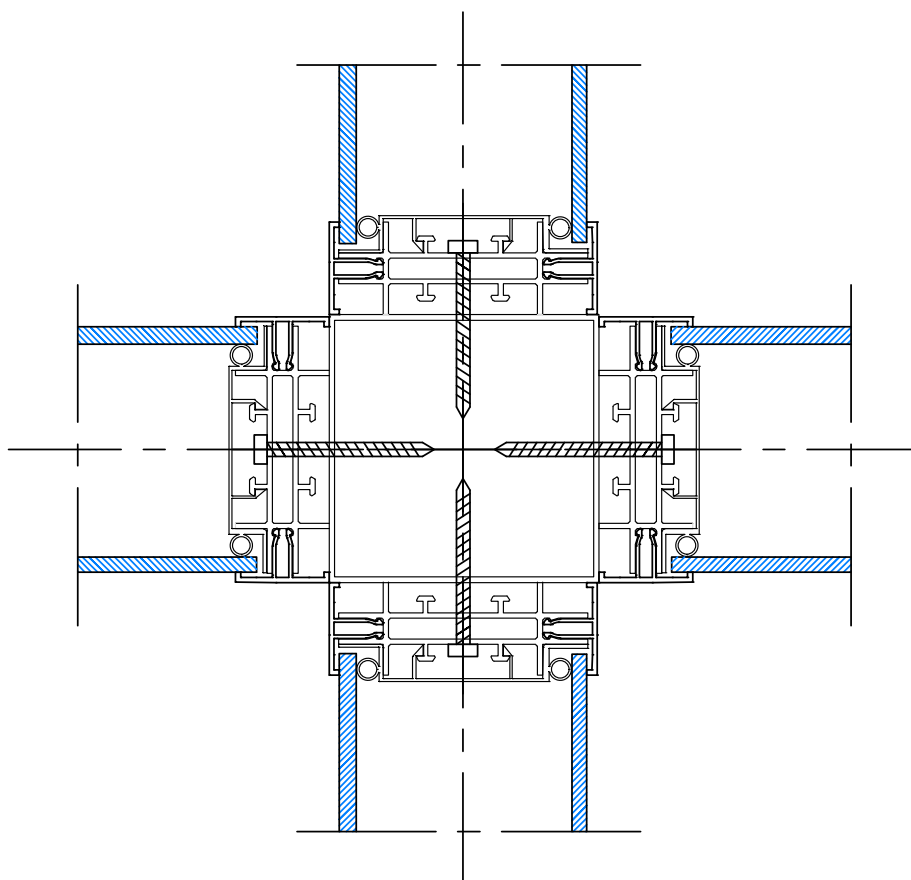
NW 72-13 PVC glazing bead for studs

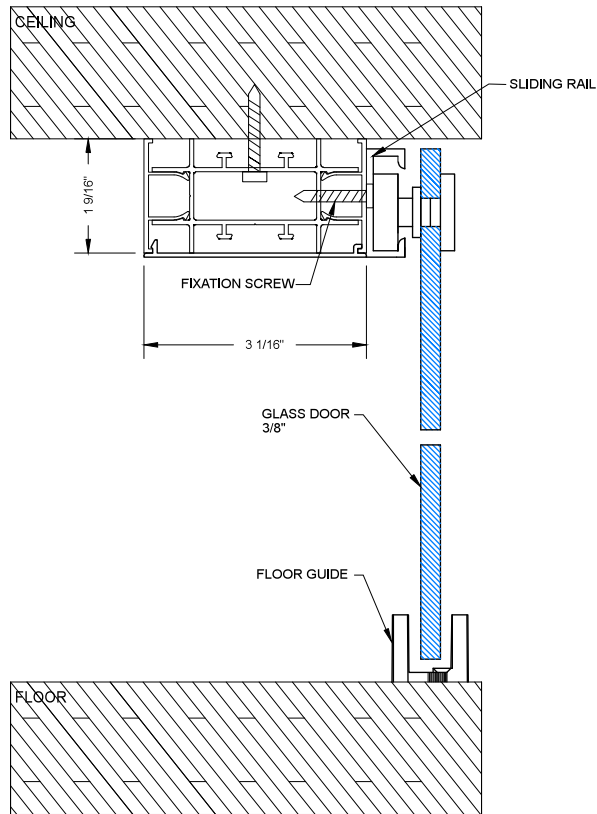


NW 72-38 PVC glazing bead for tracks

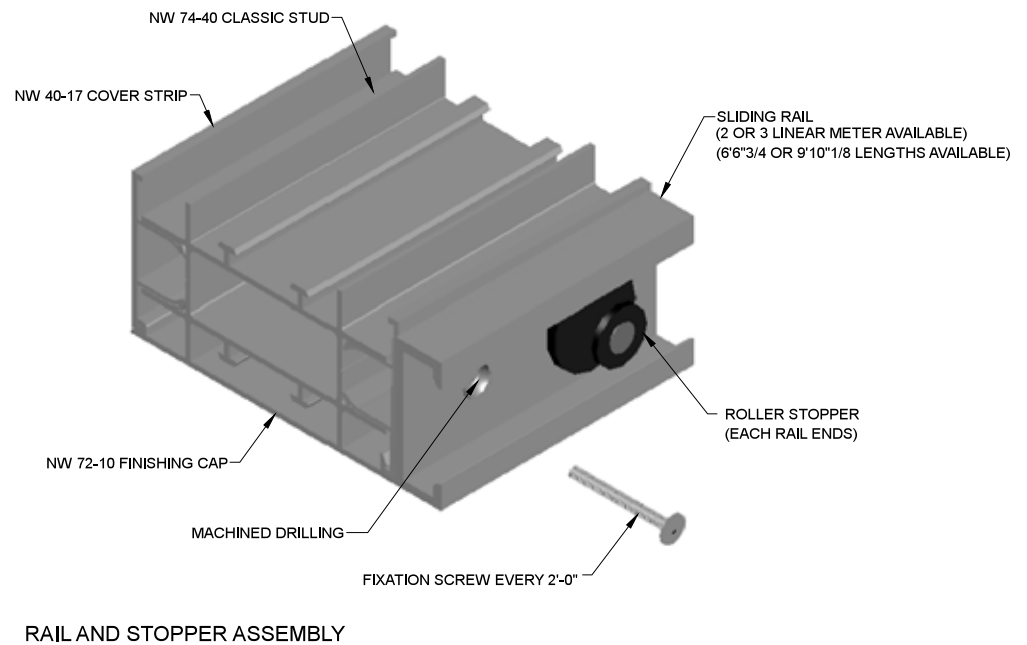


NW 78-78 Square post



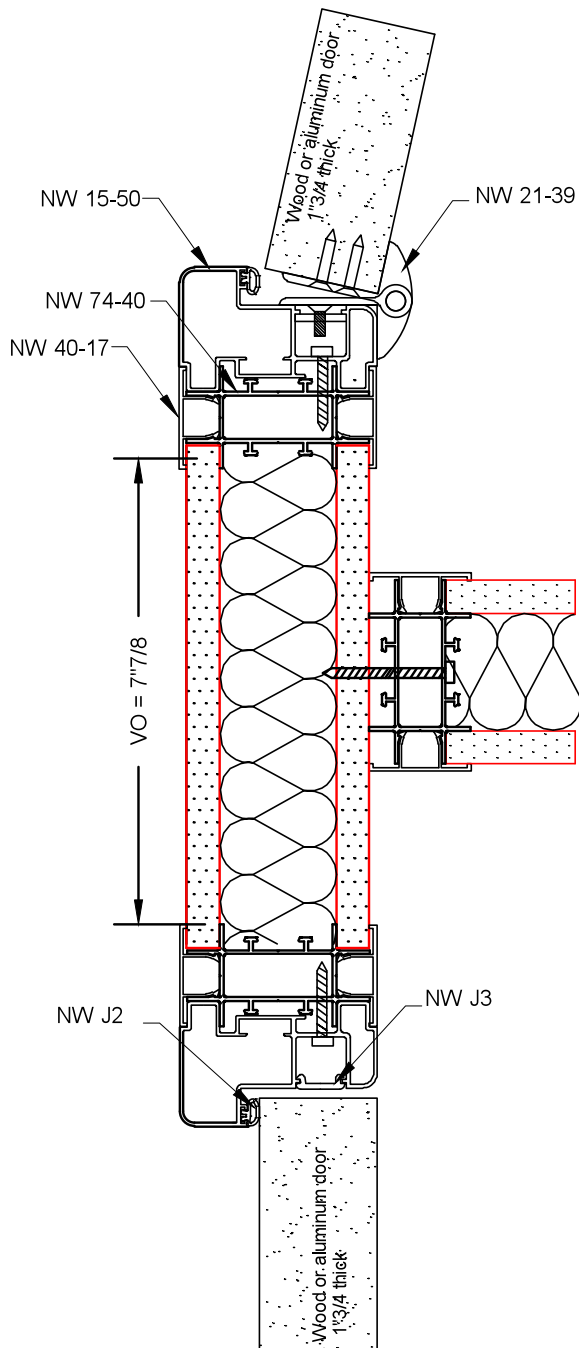


DOOR OPENING VERTICAL SECTION



RAIL AND STOPPER ASSEMBLY

NOTICE: THE STANDARD TOP TRACK (NW 80-40) MUST BE REPLACED BY A CLASSIC STUD ALONG THE TOTAL SLIDING RAIL LENGTH



#### PROFILES



NW 80-40 Top and bottom track



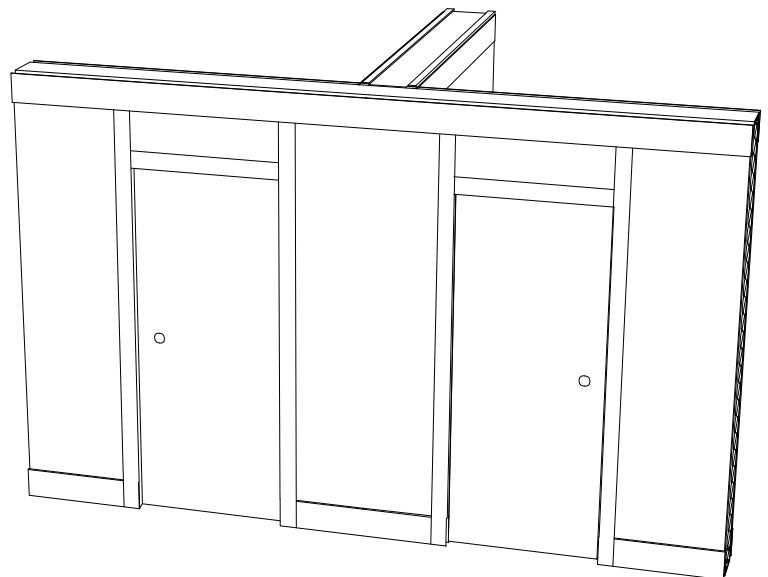
NW 74-40 or NW 72-27 Standard stud

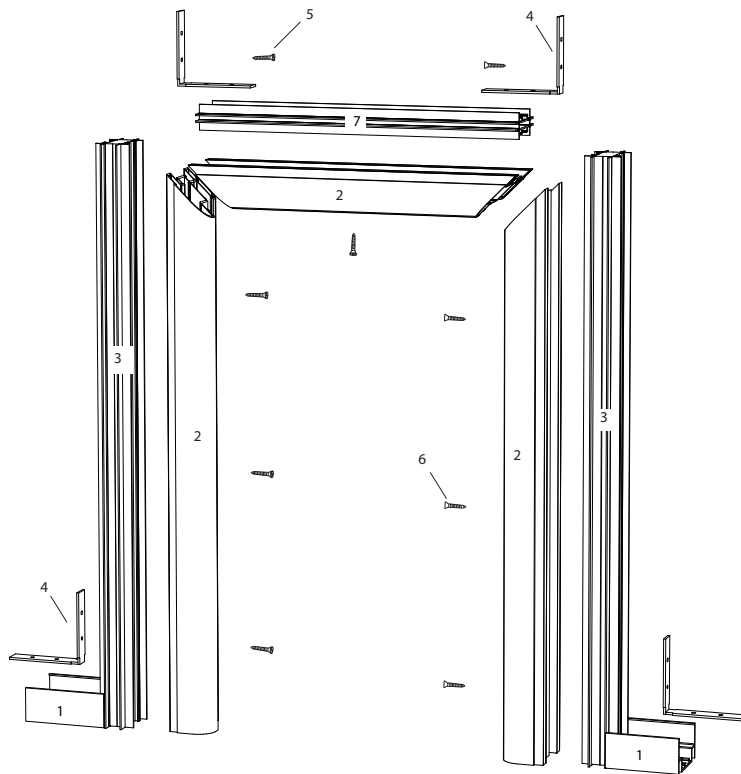


NW 40-17 or NW 27-15P Trim



NW 15-50 Door frame (reversible)

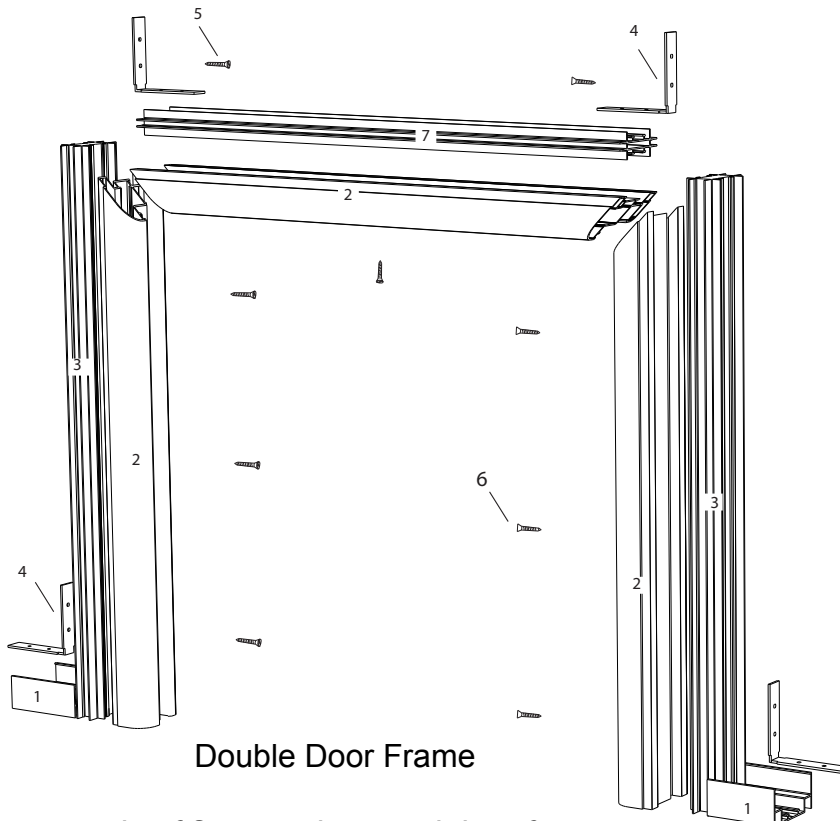




Single Door Frame

**PROFILES**

- |   |                                      |
|---|--------------------------------------|
| 1 | NW 80-40 Top and bottom track        |
| 2 | NW 15-50 Door frame                  |
| 3 | NW 74-40 Flex-C stud                 |
| 4 | NW 90-80 Angle bracket               |
| 5 | Angle bracket screw                  |
| 6 | Frame fixation screws (not included) |
| 7 | NW 72-27 Flex stud                   |

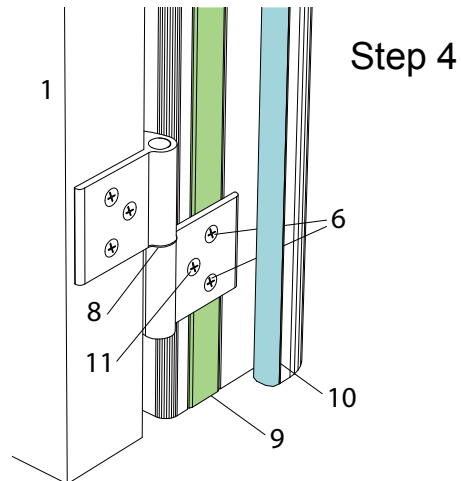
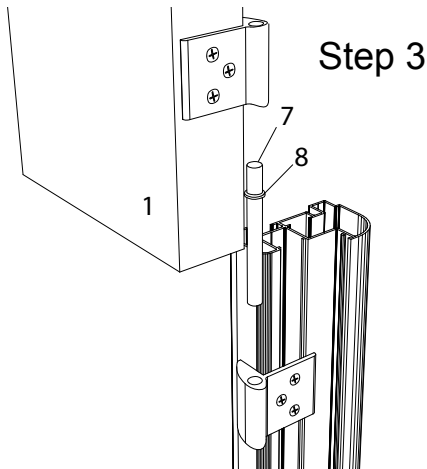
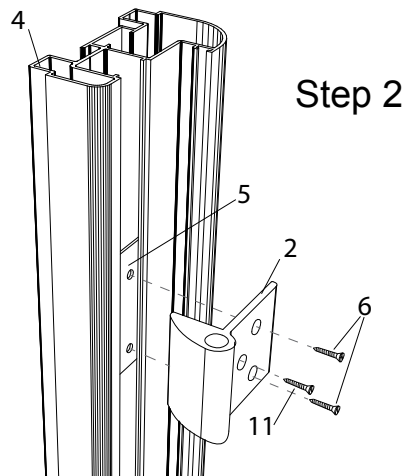
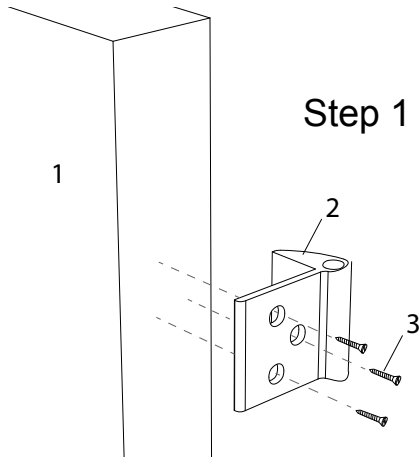


Double Door Frame

NOTE:

\*Vertical stud sits outside of floor track around door frame





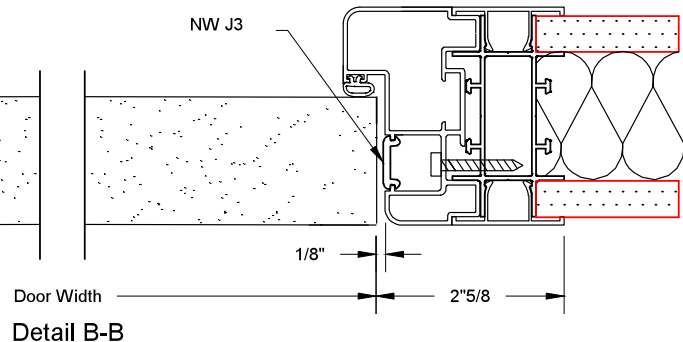
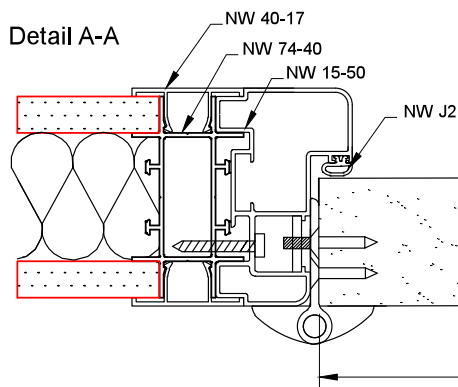
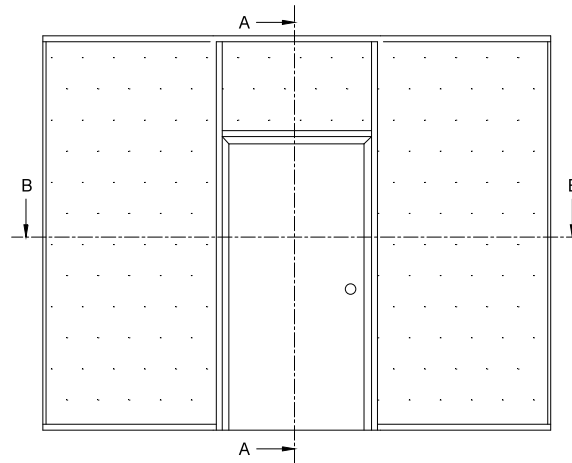
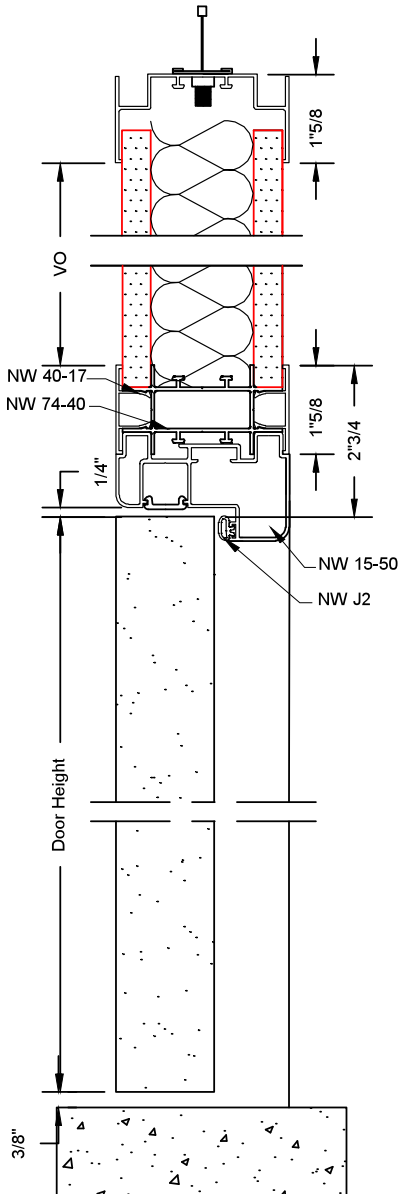
#### PARTS

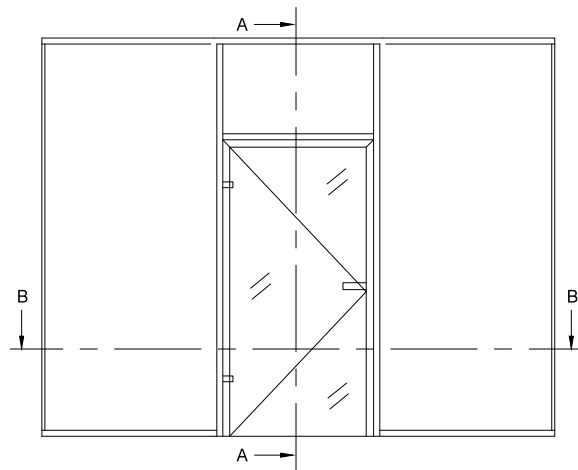
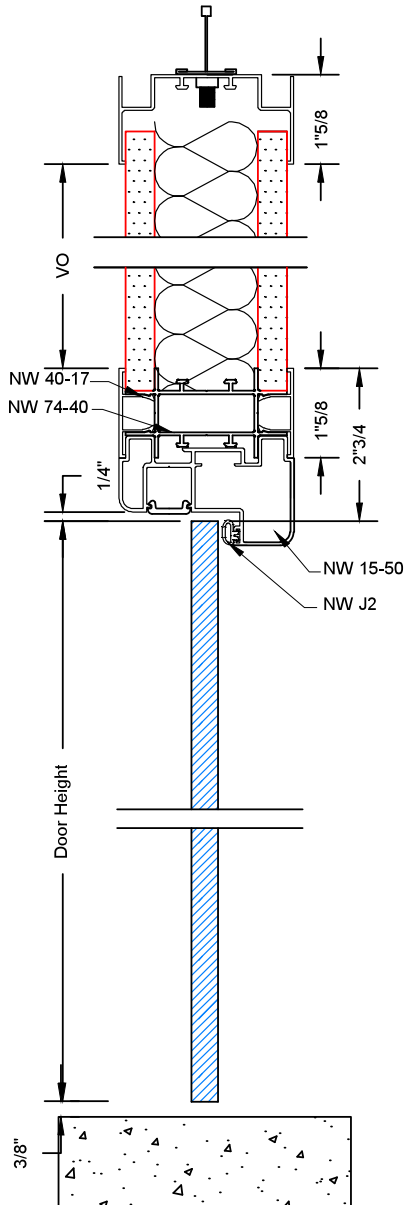
1	Door
2	Hinge
3	Door hinge wood screws (not-included)
4	Door frame
5	Hinge back plate
6	Hinge and frame screws for fixing hinge to back plate
7	Hinge pin
8	Teflon washer
9	Door seal
10	Seal for door frame
11	Locking screw (not-included)

#### NOTE:

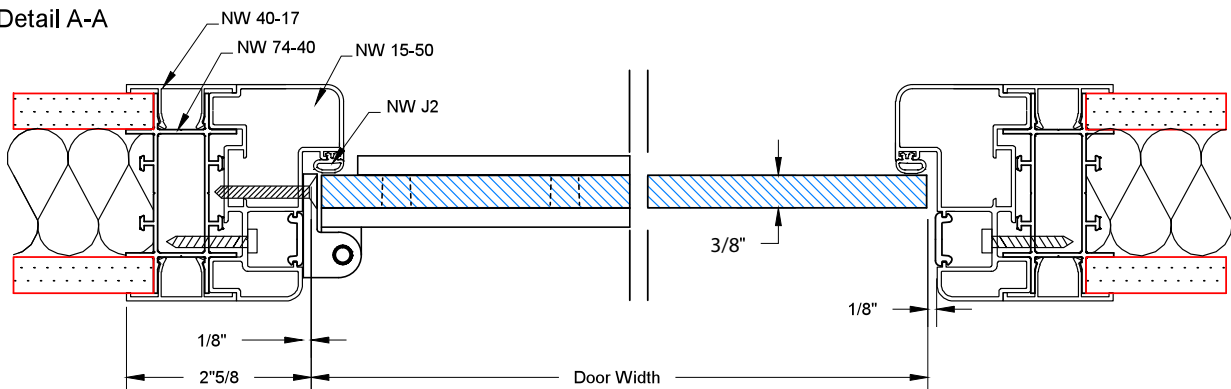
\*Standard door 36"x 84" : 3 pairs of hinges

\*Door with larger dimensions : 4 pairs of hinges or more

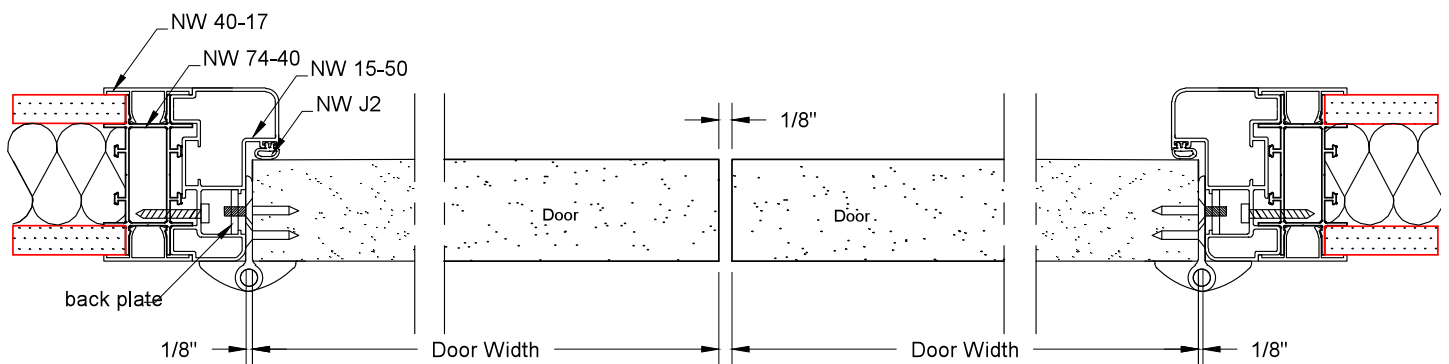
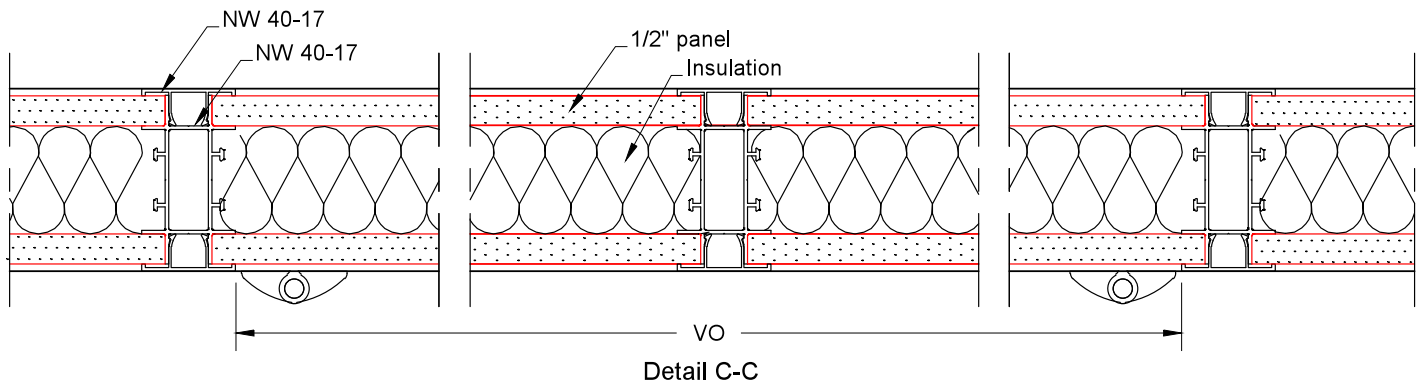
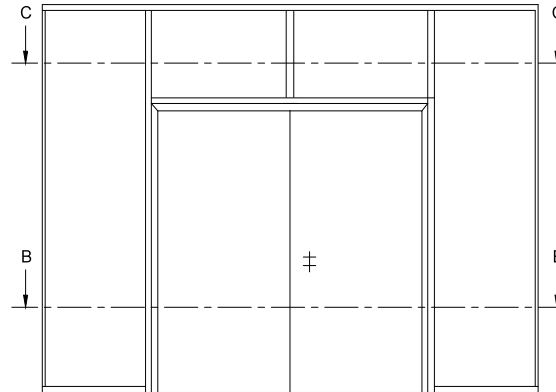


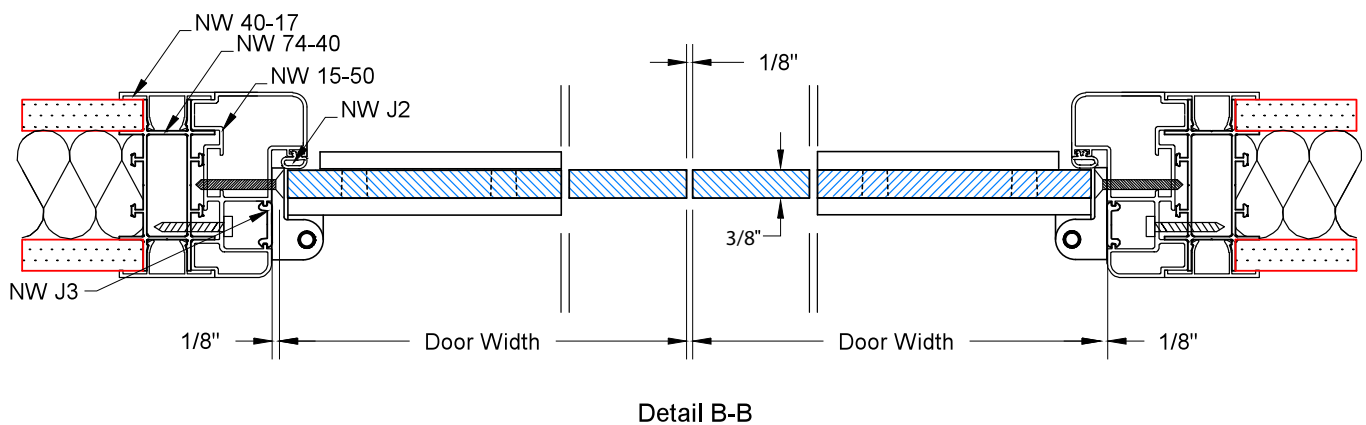
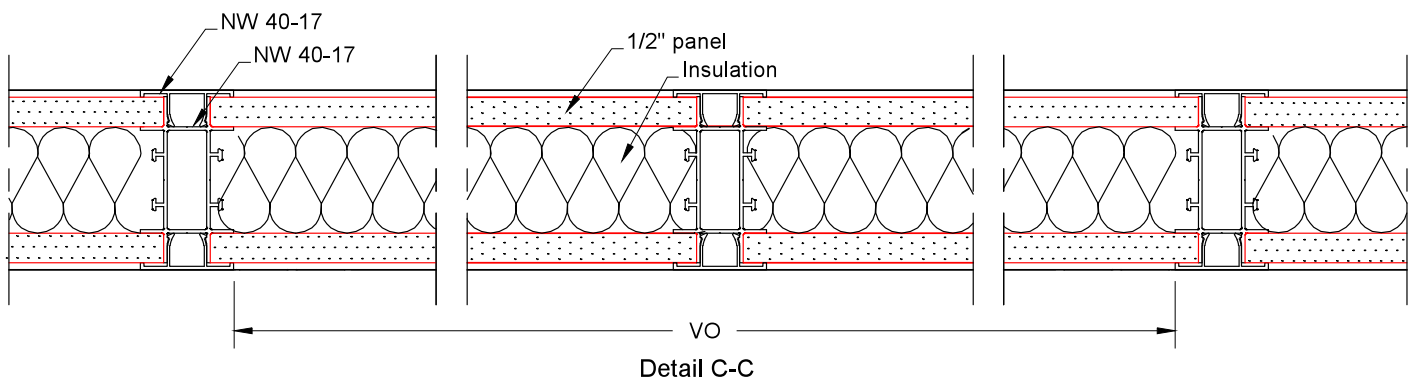
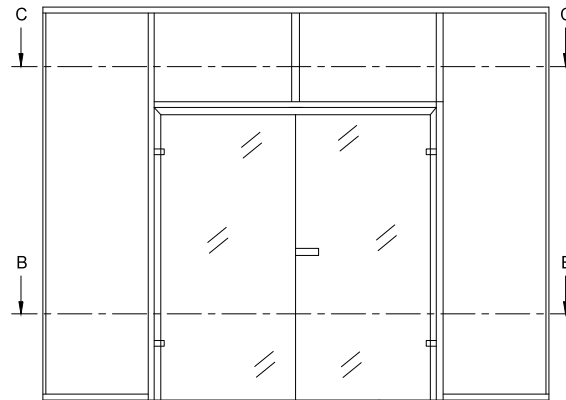


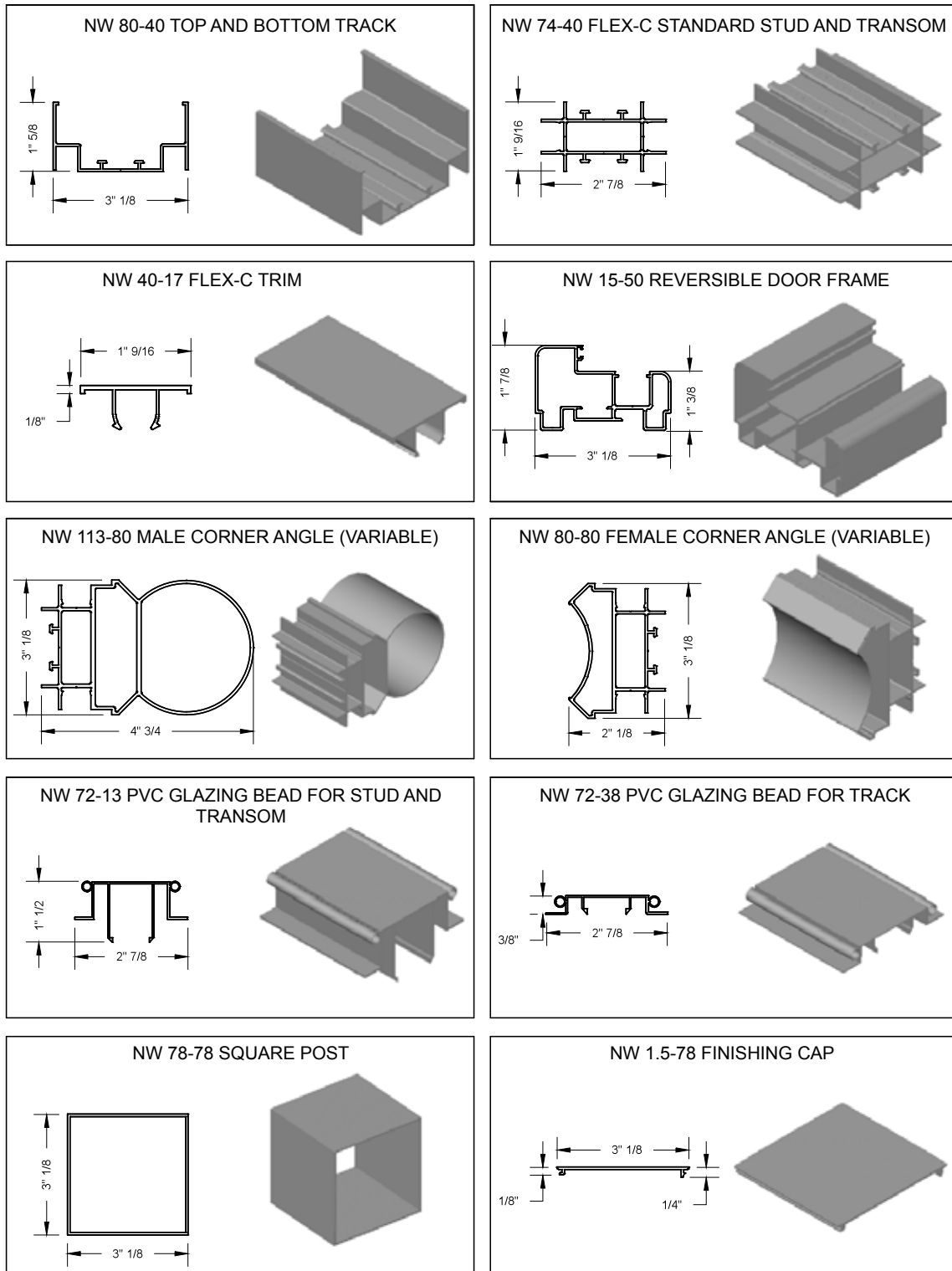
Detail A-A



Detail B-B

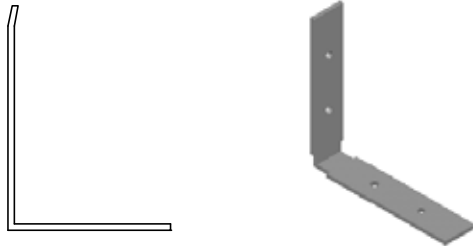




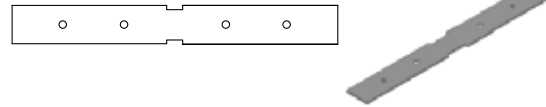




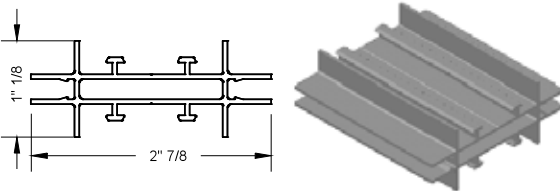
NW 90-80 ANGLE BRACKET



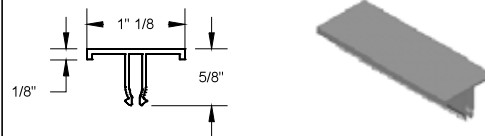
NW 160-19 TRACK JOINER



NW 72-27 FLEX STUD



NW 27-15P TRIM



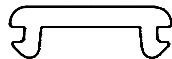
NW 21-39 DOOR HINGE



NW J2 PHONIC SEAL FOR DOOR FRAME



NW J3 DOOR SEAL

SCREWS INCLUDED WITH PARTITION:  
ANGLE BRACKET SCREW

## OTHER SCREWS (NOT INCLUDED)

- Fixation screw
- Tapcon screw
- Flat headed wood screws 1 1/8 long with 1/4" diameter
- Self tapping screws of different sizes diameter 1/4" lengths: 2", 1 1/8", 5/8"
- Velcro roll
- Double faced tape
- Drywall fixing screw

## APPENDIX 1

### CUTTING INSTRUCTIONS FOR OPENINGS BASED ON VO DIMENSION

**VO = Visible opening**

( Dimension between 2 aluminum profiles horizontally or vertically)

#### Wood Panel and Glass table

Opening	Horizontal dimension between posts	Vertical dimensions		
		Between track and track NW 80-40/NW 80-40	Between track and stud NW 80-40/NW 74-40	Between stud and stud NW 74-40/NW 74-40
Panels	VO + 9/16"	VO + 1"7/16	VO + 1"9/32	VO + 11/16"
Glass	VO + 1/2"	VO + 3/4"	VO + 1"1/8	VO + 5/8"

#### Table for aluminum, Glass or Wood doors

Opening	Horizontal dimensions	Vertical dimensions
Wood or aluminum door	VO - 2"1/4	VO - 1"5/8

## APPENDIX 2

### TABLE FOR PROFILES TO BE CUT IN FUNCTION OF DIMENSION

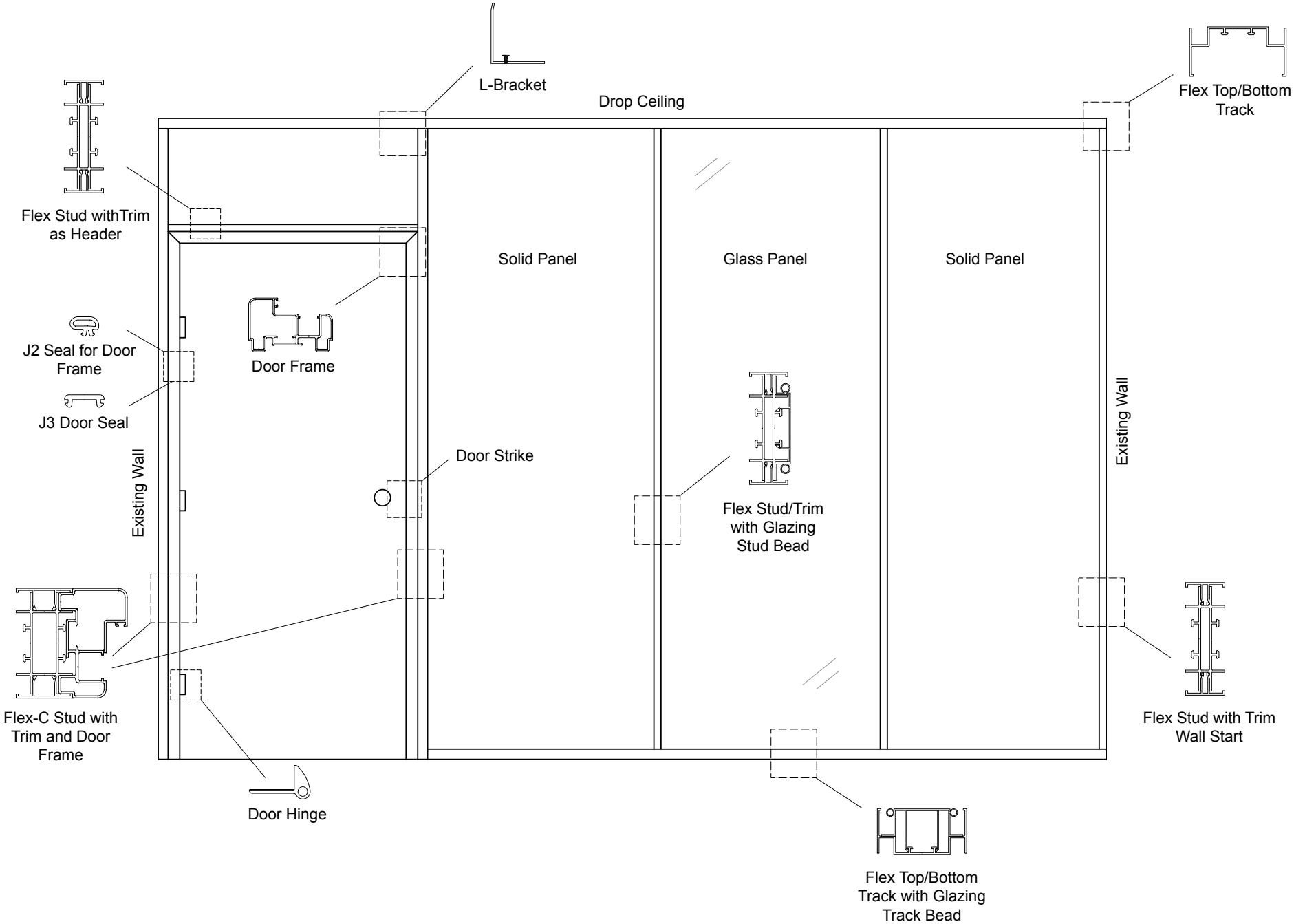
**Based on height: HT (Floor to ceiling height) or width: VO (visible opening)**

Profiles	Height	Width
NW 74-40 against wall	HT - 1"5/8	XXXX
NW 74-40 between tracks	HT - 1"5/8	XXXX
NW 74-40 for doors	HT - 1"	XXXX
NW 74-40 for horizontal studs	XXXX	VO
NW 80-40	XXXX	VO + 3"3/16
NW 40-17 against wall	HT - 3"3/16	XXXX
NW 40-17 between tracks	HT - 3"3/16	XXXX
NW 40-17 for doors	HT - 1"5/8	XXXX
NW 40-17 for horizontal studs	XXXX	VO
NW 113-80	HT	XXXX
NW 80-80	HT	XXXX
NW 72-38	XXXX	VO
NW 72-13	VO	VO

## APPENDIX 3

### ADDITIONAL INFORMATION FOR OTHER COMPONENTS

- 1- **Panels:** Thickness 1/2"
- 2- **Insulation:** Thickness 1"1/2 (Roxul) RHF
- 3- **Glass:** Thickness 1/4"-5/16" (clear, tempered, or laminated)
- 4- **Wood Door:** Thickness 1"3/4



**FLEX SYSTEM WALL ASSEMBLY DIAGRAM**