

# nxtwall

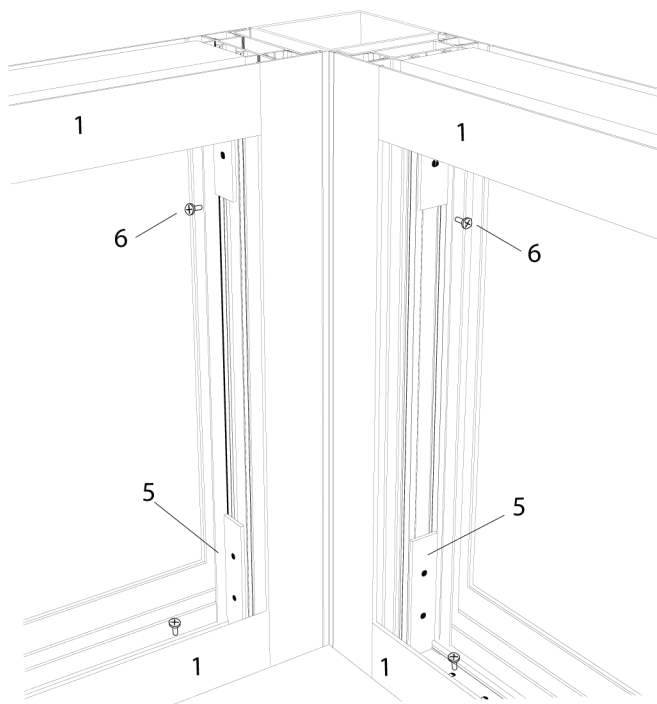
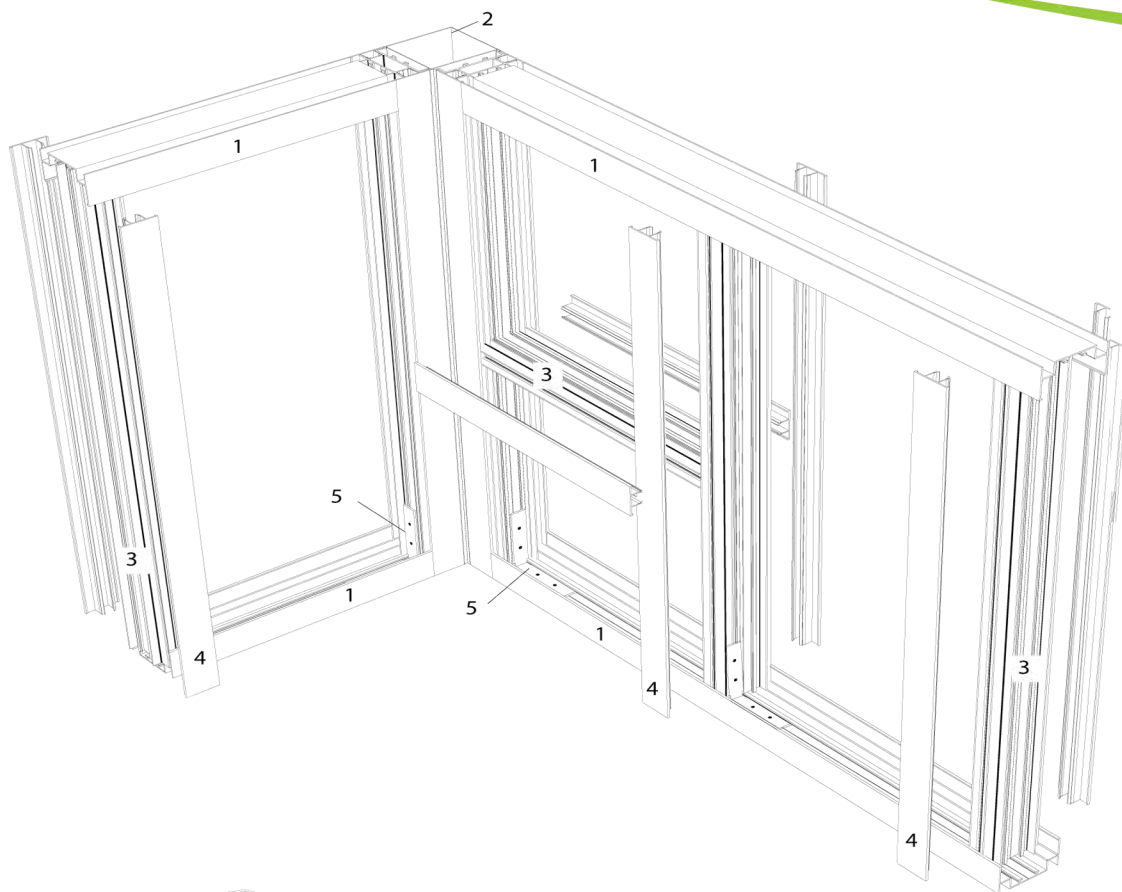


## flex series

## technical specifications guide

CLICK ON THE TEXT BELOW TO JUMP TO PAGE,  
TO RETURN TO THE TABLE OF CONTENTS = CLICK THE NXTWALL LOGO

GUIDING PRINCIPLE.....	3
TYPES OF MODULATION .....	4
<b>SOLID PARTITIONS</b>	
FULL HEIGHT SOLID .....	5
<b>GLAZED PARTITIONS</b>	
FULL HEIGHT GLAZED (DOUBLE GLASS) .....	6
FULL HEIGHT GLAZED (SINGLE GLASS) .....	7
SOLID WITH TOP GLASS PANEL (DOUBLE GLASS) .....	8
SOLID WITH TOP GLASS PANEL (SINGLE GLASS) .....	9
SOLID, GLASS WITH TOP SOLID PANEL (DOUBLE GLASS) .....	10
SOLID, GLASS WITH TOP SOLID PANEL (SINGLE GLASS) .....	11
<b>ANGLES</b>	
2 DIRECTION ANGLE (VARIABLE) .....	12
2 DIRECTION ANGLE .....	13
3 DIRECTION ANGLE (VARIABLE) .....	14
3 DIRECTION ANGLE .....	15
4 DIRECTION WITH ANGLES .....	16-17
SLIDING DOOR ASSEMBLY .....	18
FILLER MODULE BETWEEN 2 DOORS .....	19
<b>DOORS</b>	
DOOR FRAME ASSEMBLY .....	20
HINGE INSTALLATION .....	21
SINGLE DOOR (WOOD OR ALUMINUM) .....	22
SINGLE GLASS DOOR .....	23
DOUBLE DOOR (WOOD OR ALUMINUM) .....	24
DOUBLE GLASS DOOR .....	25
PROFILES AND ACCESSORIES .....	26-27
APPENDIX .....	28



#### PROFILES

1 Flex Top and Bottom Track

2 Flex Square Post

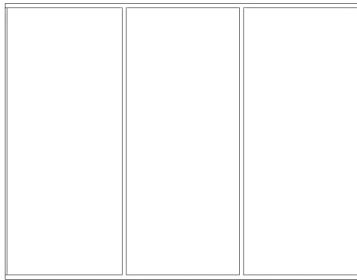
3 Genesis or Flex Stud

4 Genesis or Flex Trim

5 Flex L-Bracket

6 Flex L-Bracket Set Screw

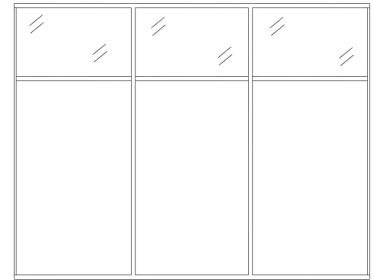
## TYPES OF MODULATION



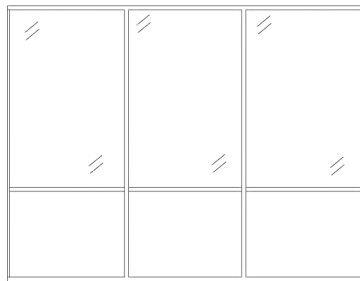
Full Height Solid



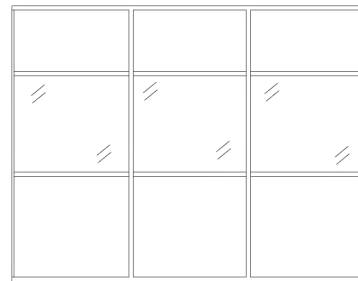
Full Height Glazed



Solid with Top Glass Panel  
(Clerestory)

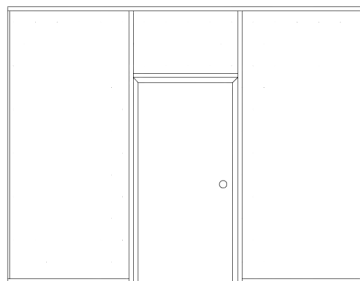


Half Glazed

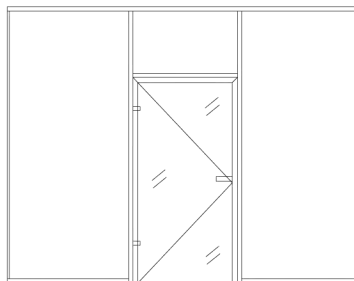


Solid, Glass with Top  
Solid Panel

## DOOR MODULATIONS



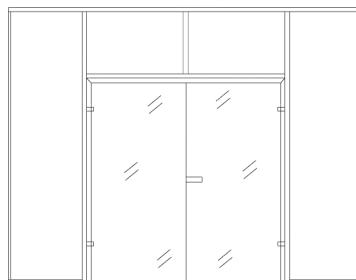
Single Door  
(Wood or Aluminum)



Single Frameless Glass  
Door

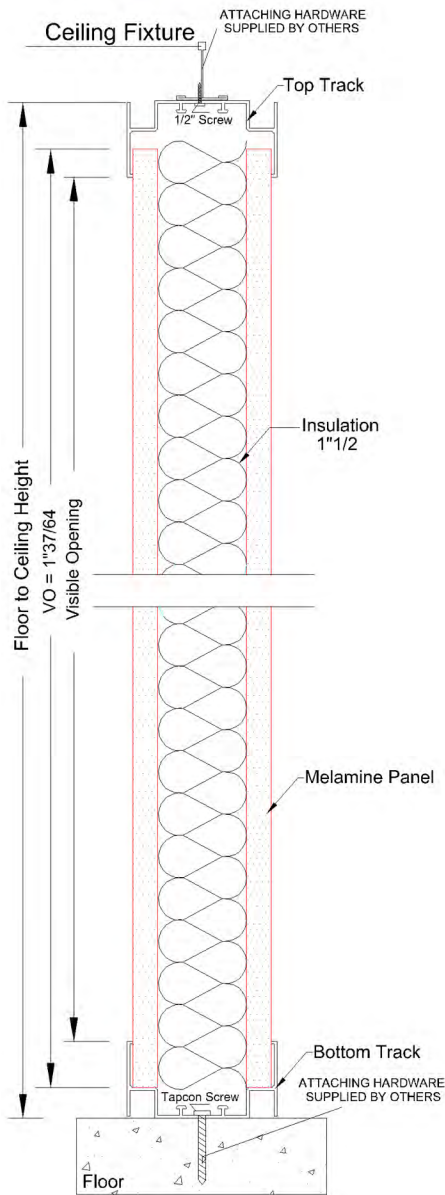


Double Door  
(Wood or Aluminum)

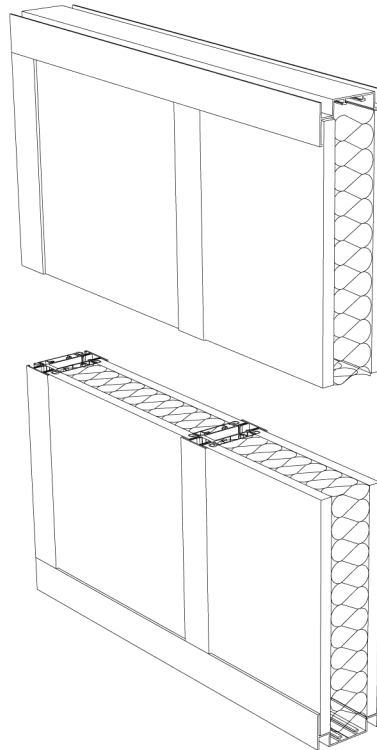


Double Frameless Glass Door





Detail A-A



PROFILES



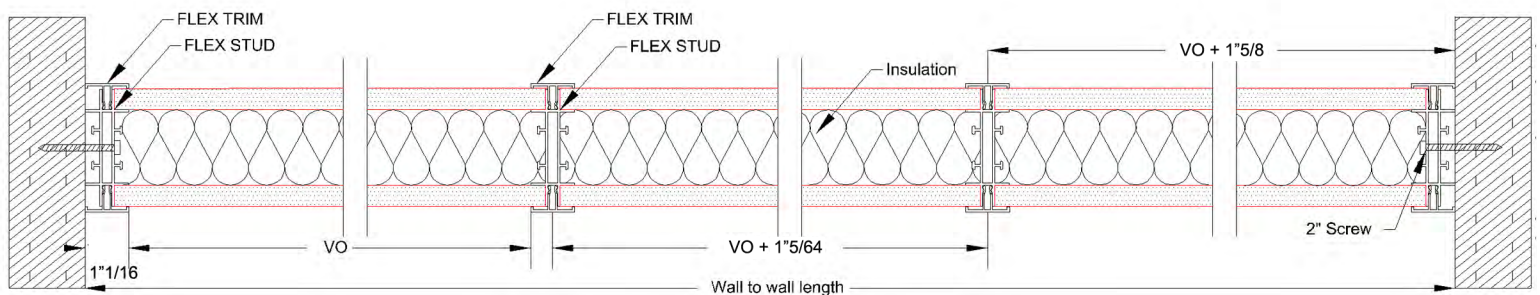
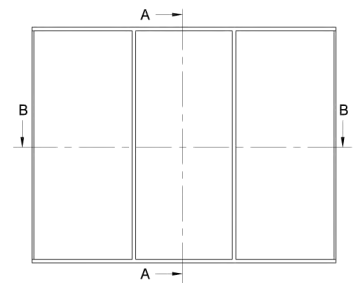
Top and Bottom Track



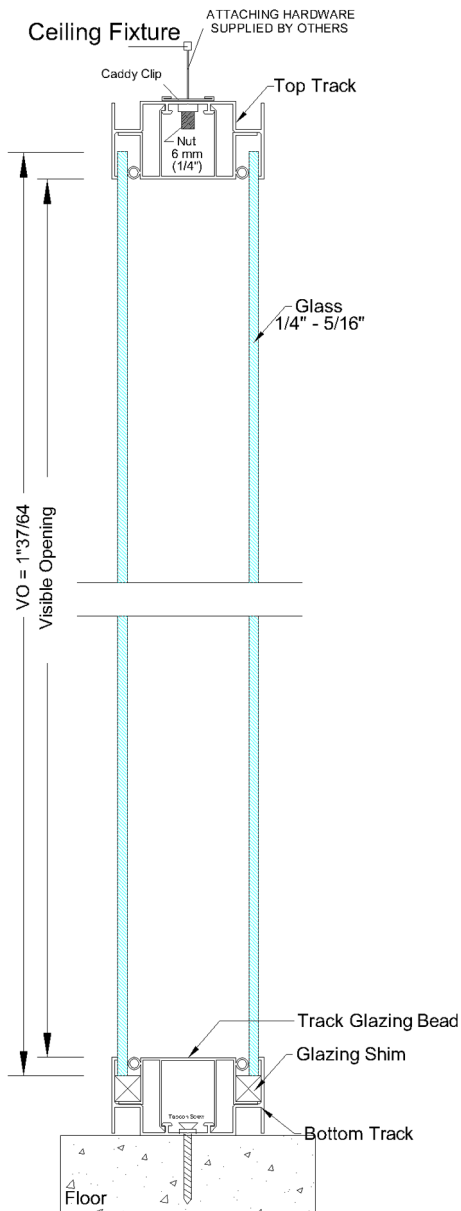
Genesis or Flex Stud



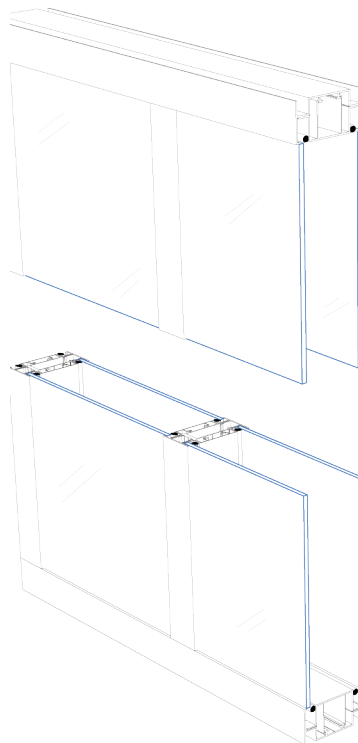
Genesis or Flex Trim



Detail B-B



Detail A-A



## PROFILES



Top and Bottom Track



Genesis or Flex Stud



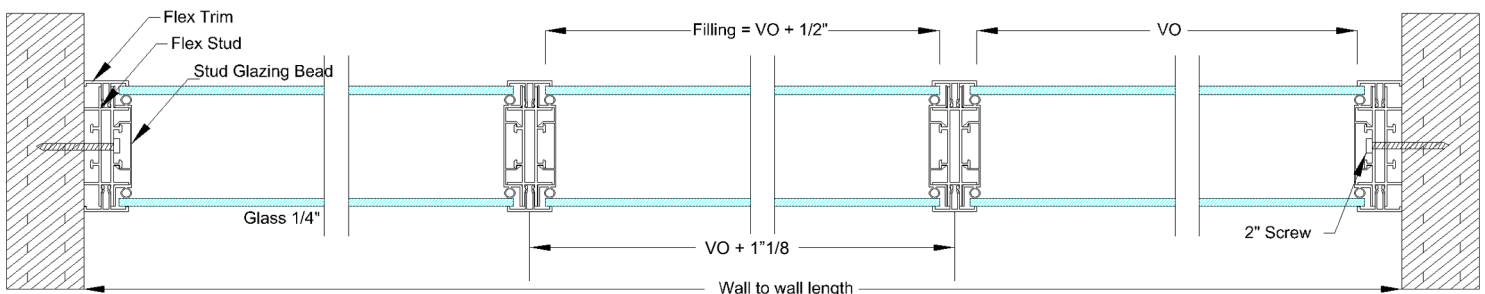
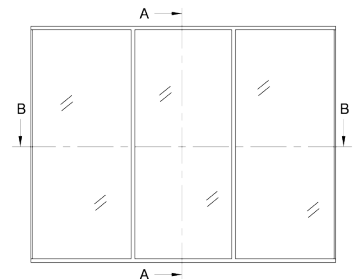
Genesis or Flex Trim



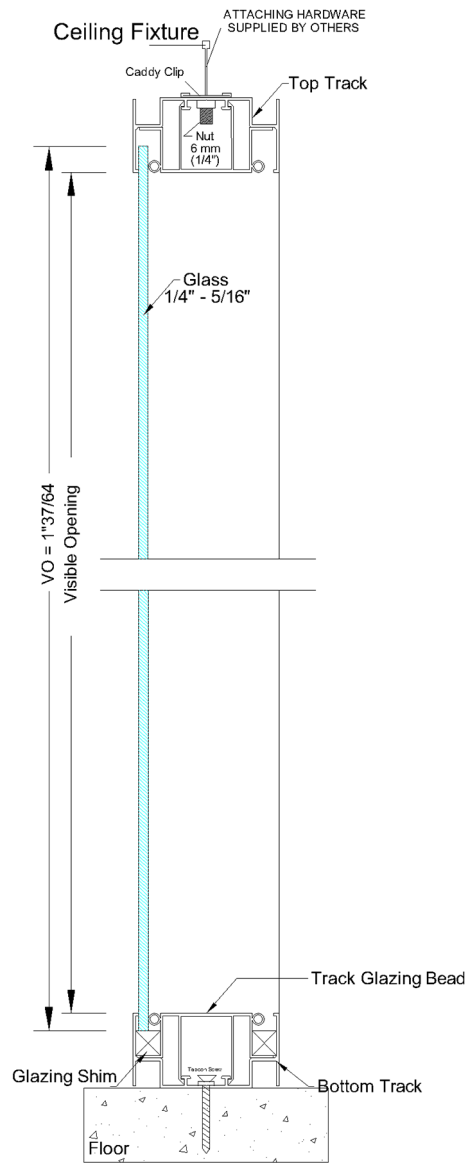
Stud Glazing Bead



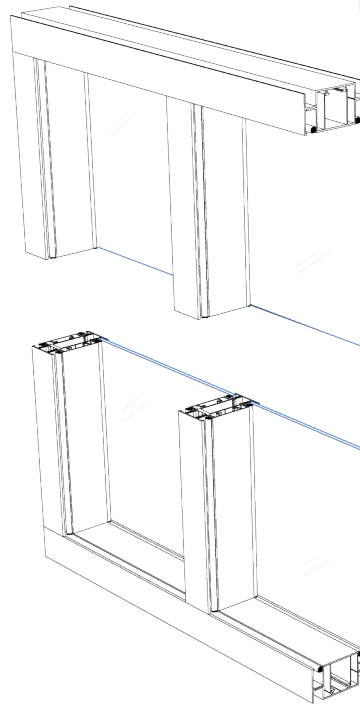
Track Glazing Bead



Detail B-B



Detail A-A



# PROFILES



Top and Bottom Track



Genesis or Flex Stud



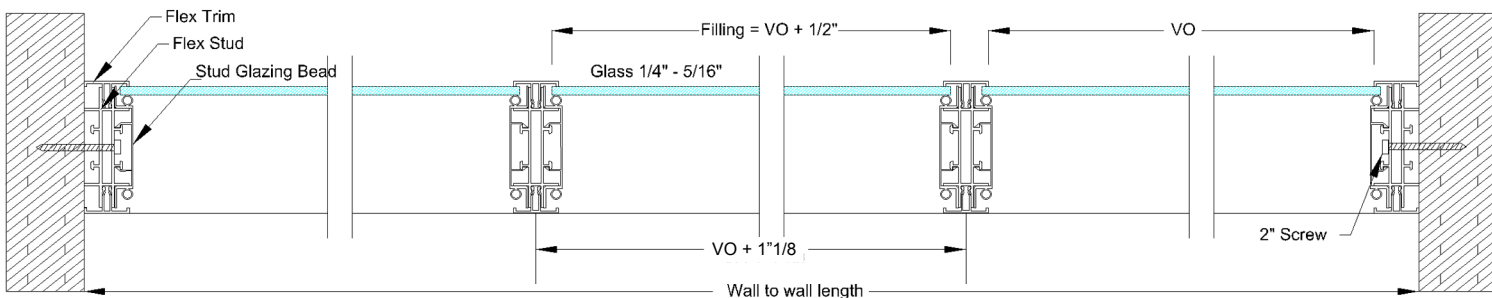
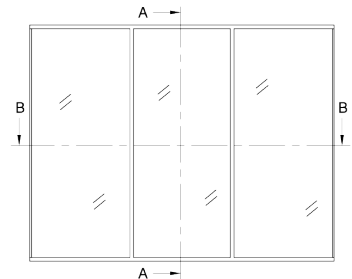
Genesis or Flex Trim



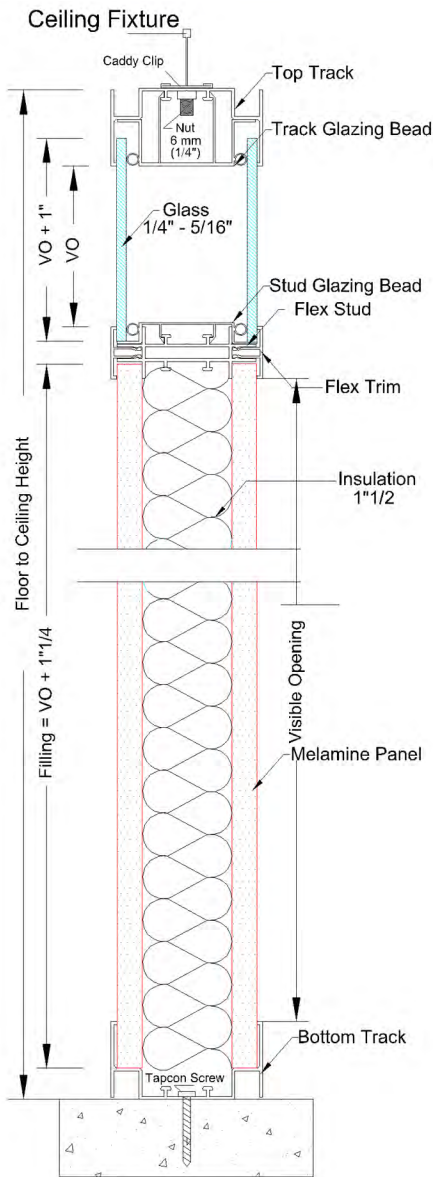
Stud Glazing Bead



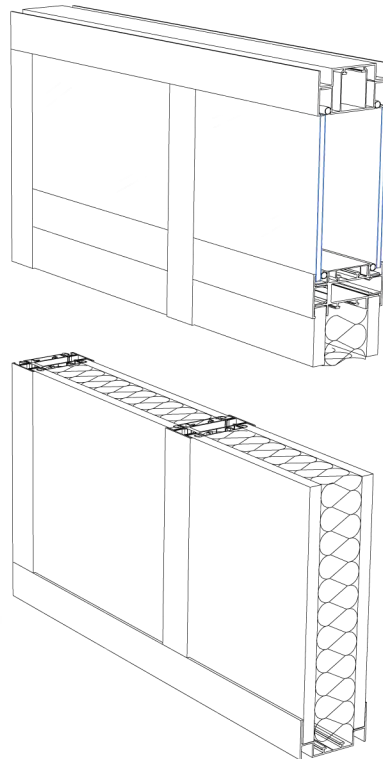
Track Glazing Bead



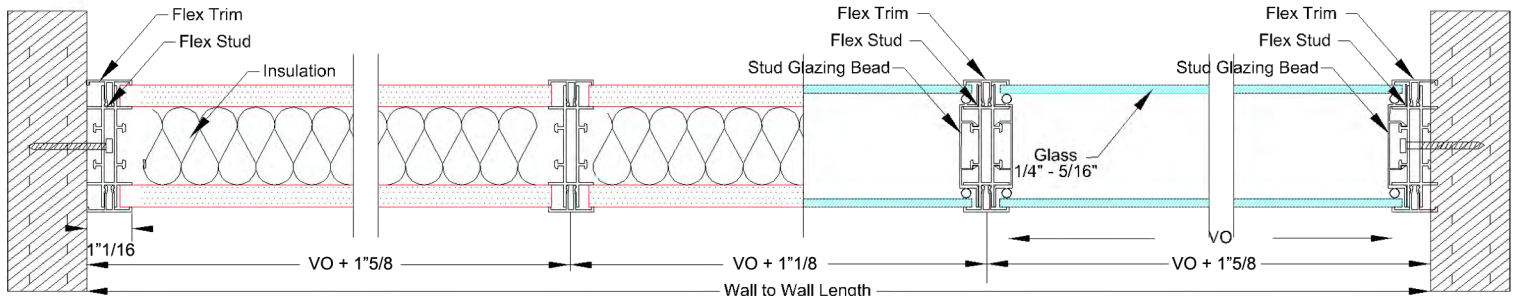
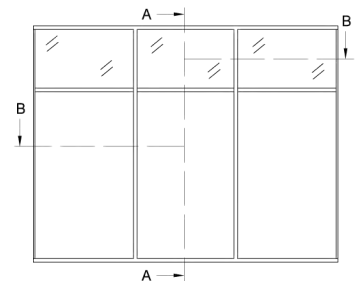
Detail B-B



Detail A-A

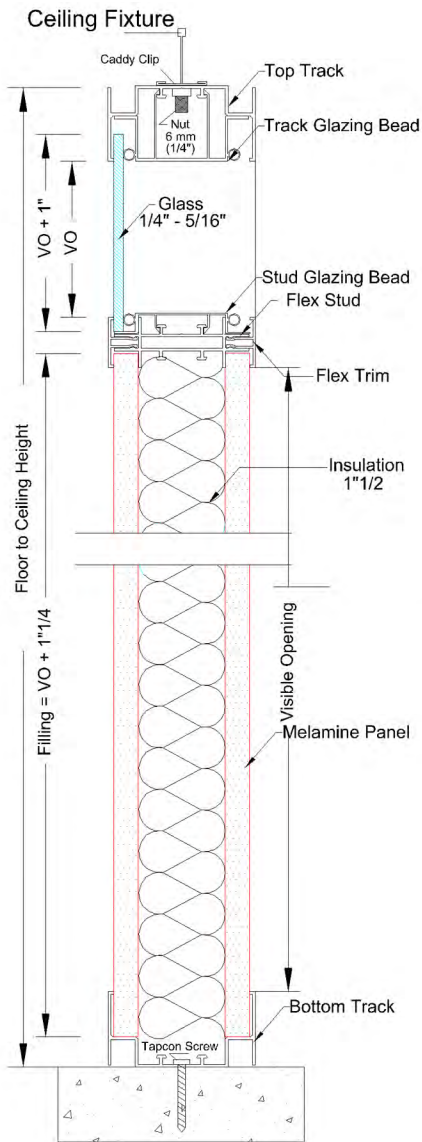


PROFILES	
	Top and Bottom Track
	Genesis and Flex Stud
	Genesis and Flex Trim
	Stud Glazing Bead
	Track Glazing Bead

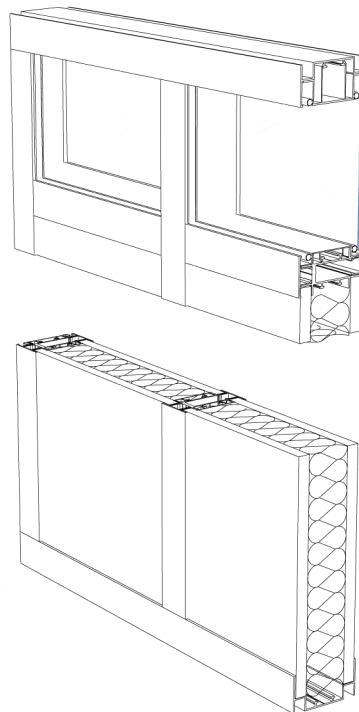


Detail B-B





Detail A-A



PROFILES



Top and Bottom Track



Genesis and Flex Stud



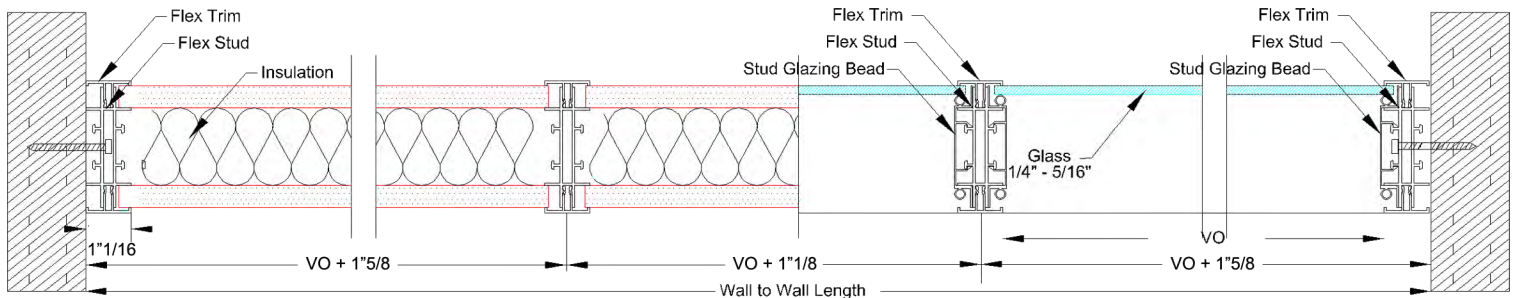
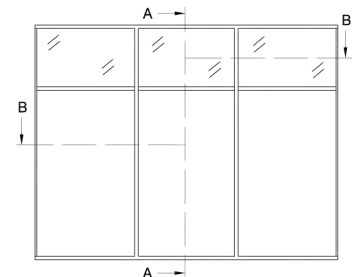
Genesis and Flex Trim



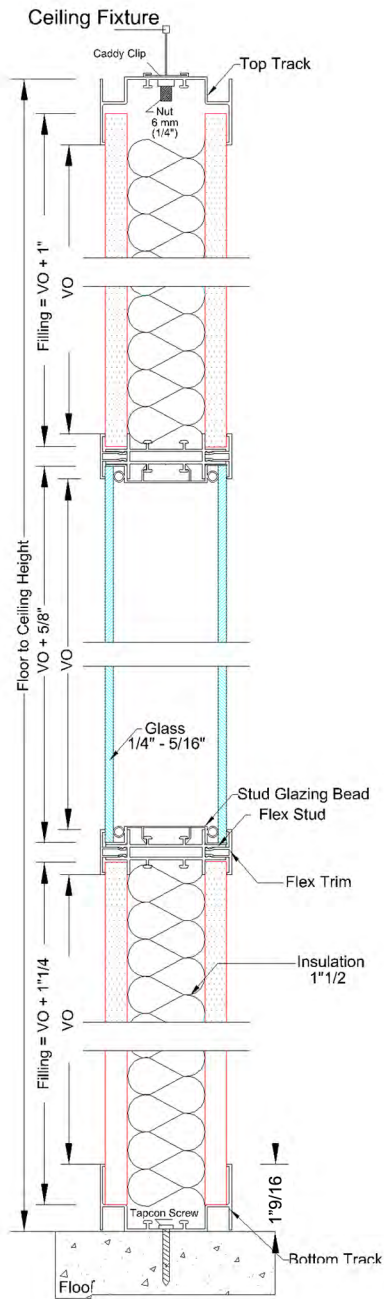
Stud Glazing Bead



Track Glazing Bead

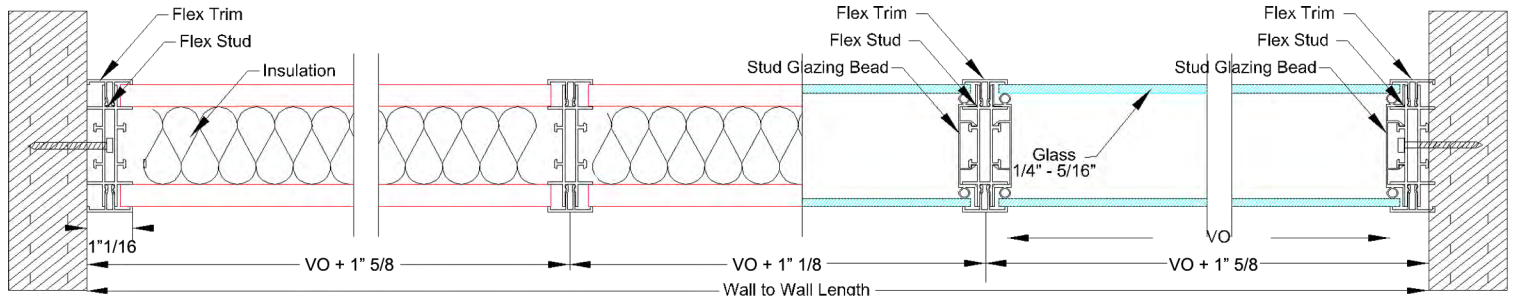
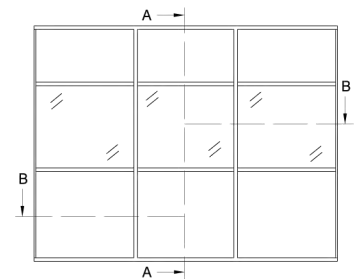
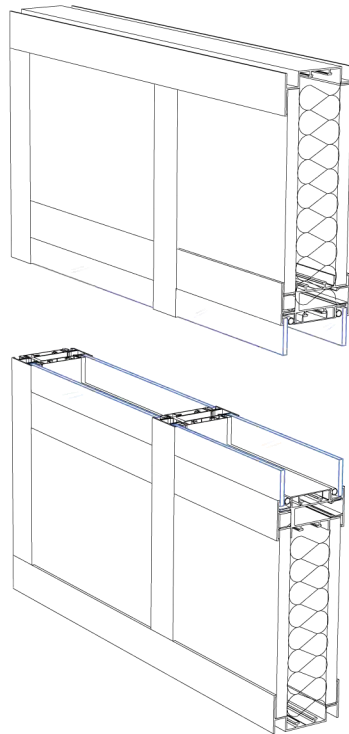


Detail B-B

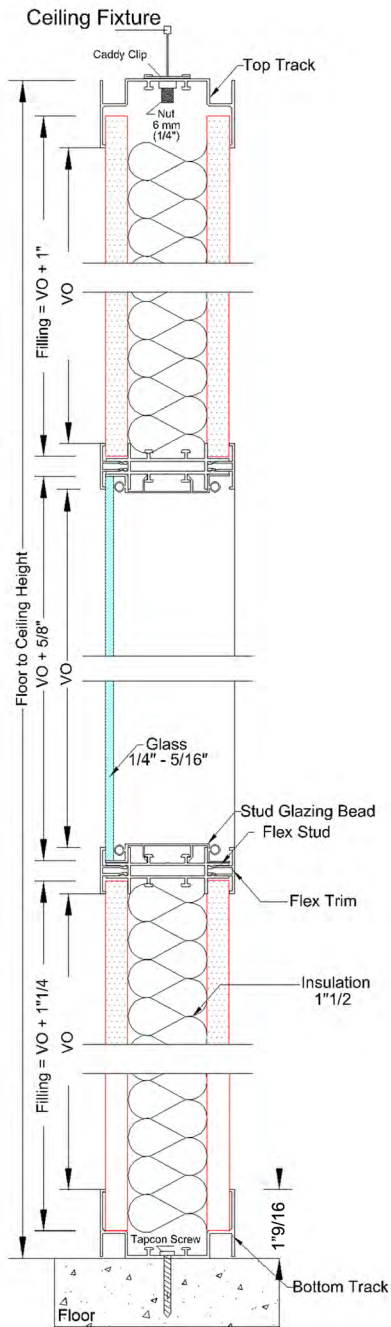


Detail A-A

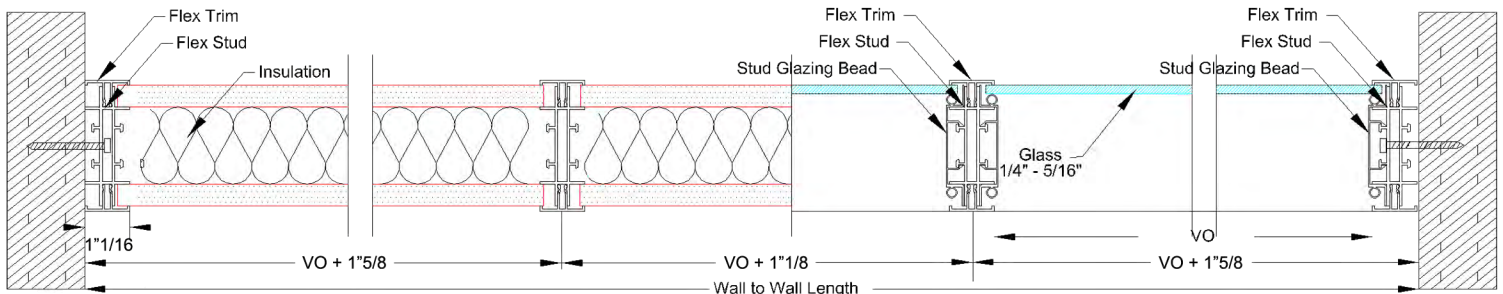
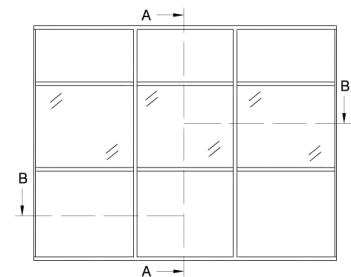
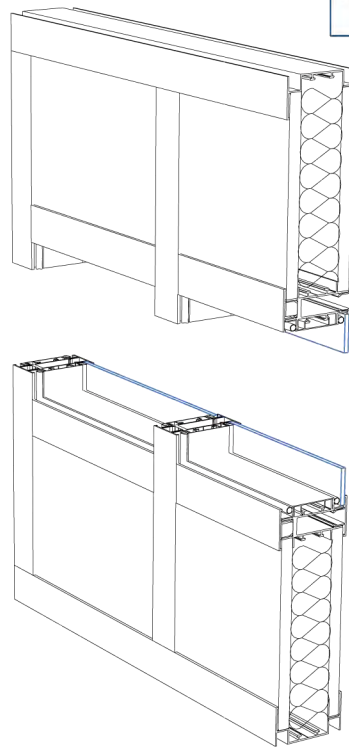
PROFILES	
	Top and Bottom Track
	Genesis and Flex Stud
	Genesis and Flex Trim
	Stud Glazing Bead
	Track Glazing Bead



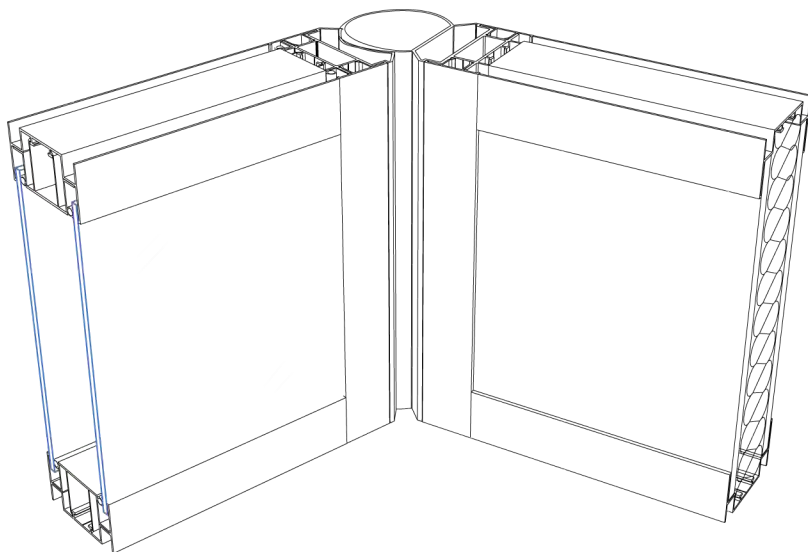
Detail B-B





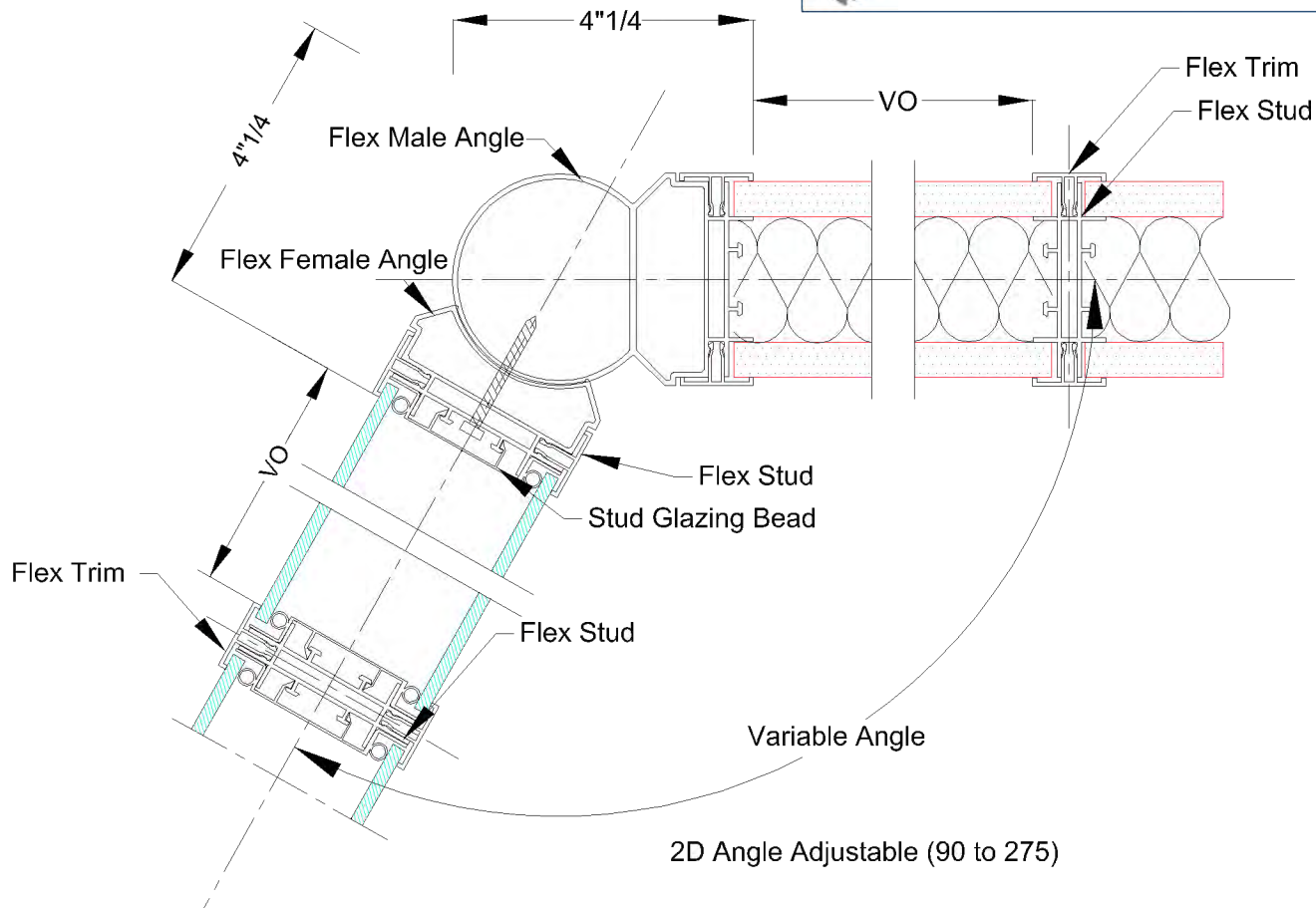
PROFILES	
	Top and Bottom Track
	Genesis and Flex Stud
	Genesis and Flex Trim
	Stud Glazing Bead
	Track Glazing Bead



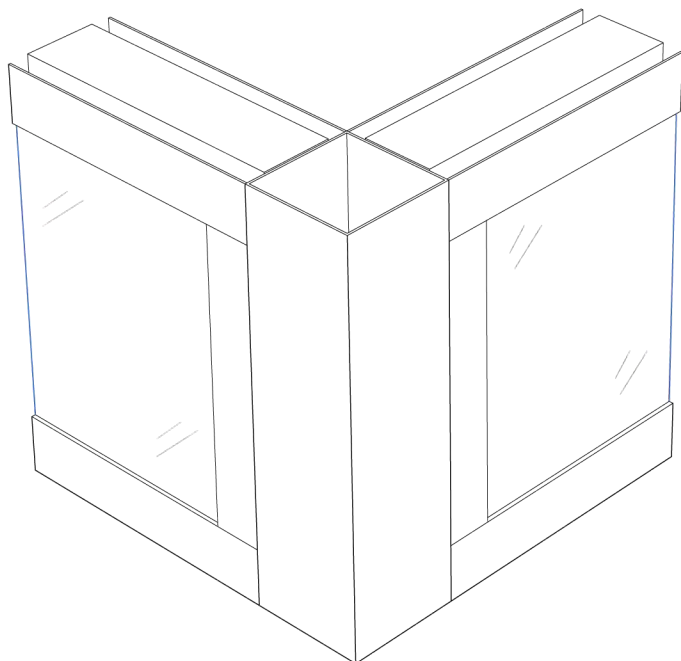




PROFILES	
	Top and Bottom Track
	Genesis or Flex Stud
	Genesis or Flex Trim
	Stud Glazing Bead
	Track Glazing Bead
	Flex Female Angle
	Flex Male Angle







#### PROFILES



Top and Bottom Track



Genesis or Flex Stud



Genesis or Flex Trim



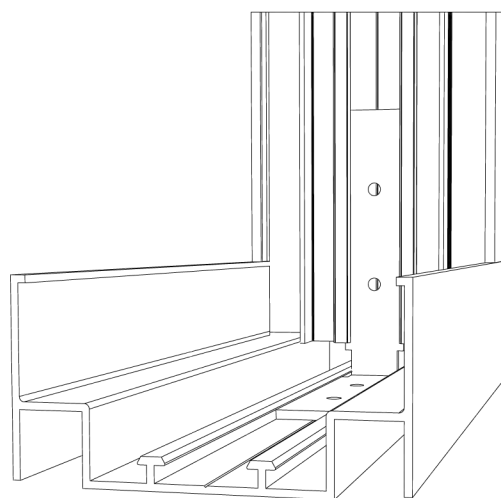
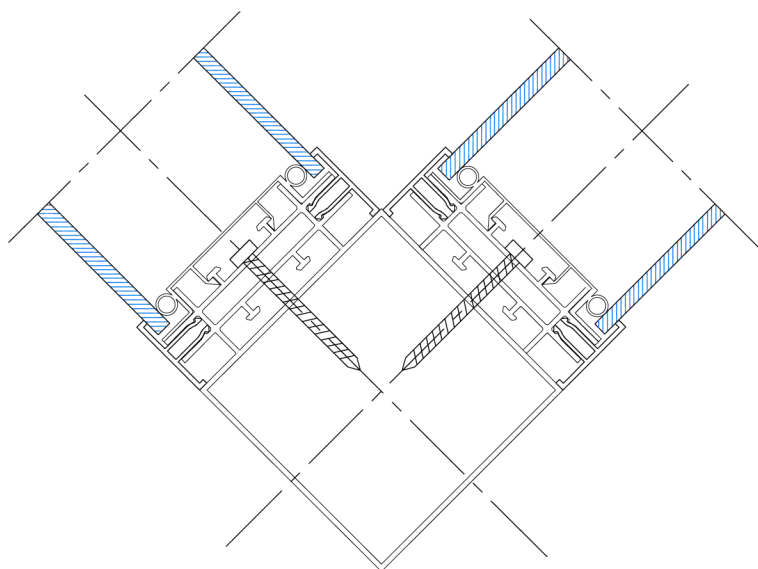
Stud Glazing Bead

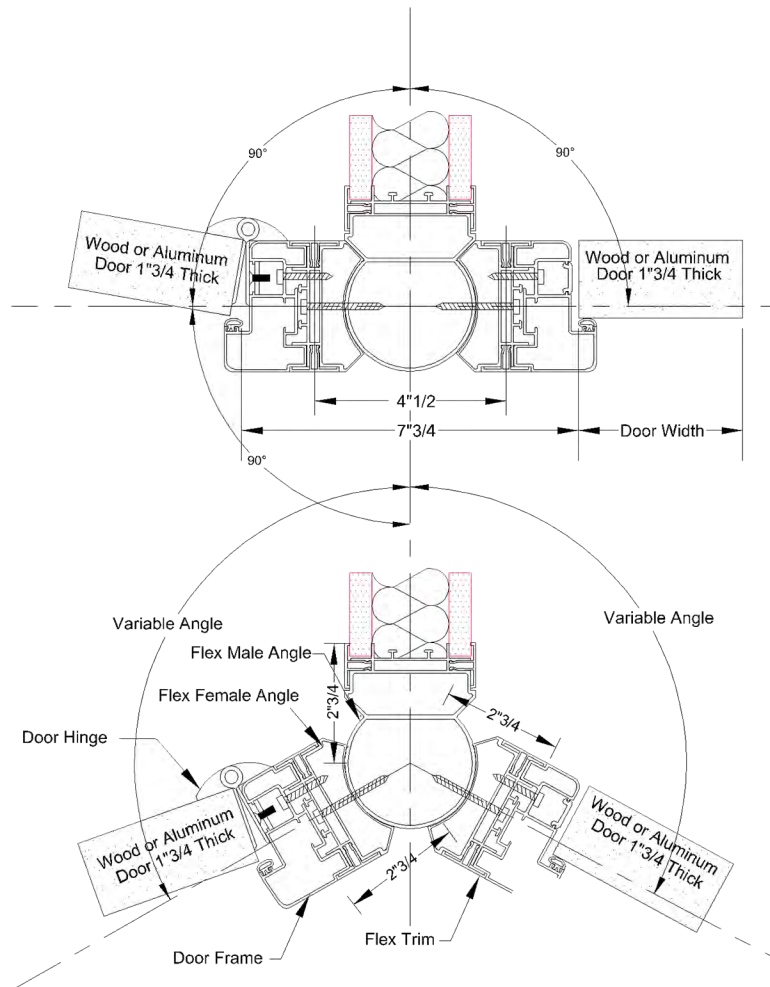










Track Glazing Bead

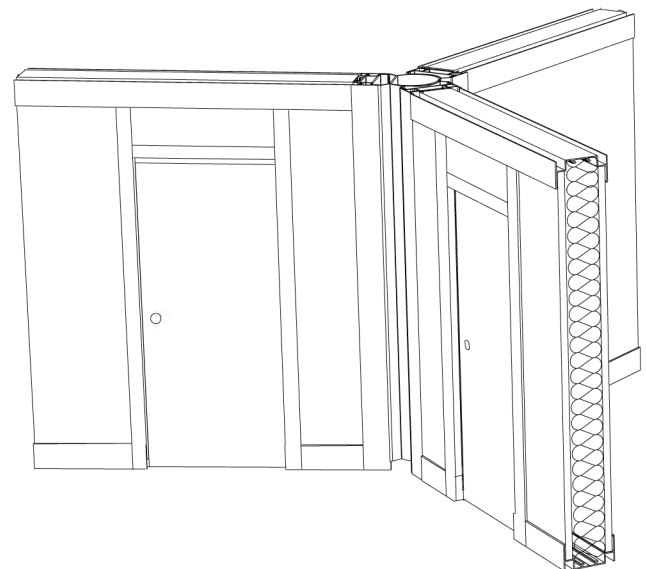


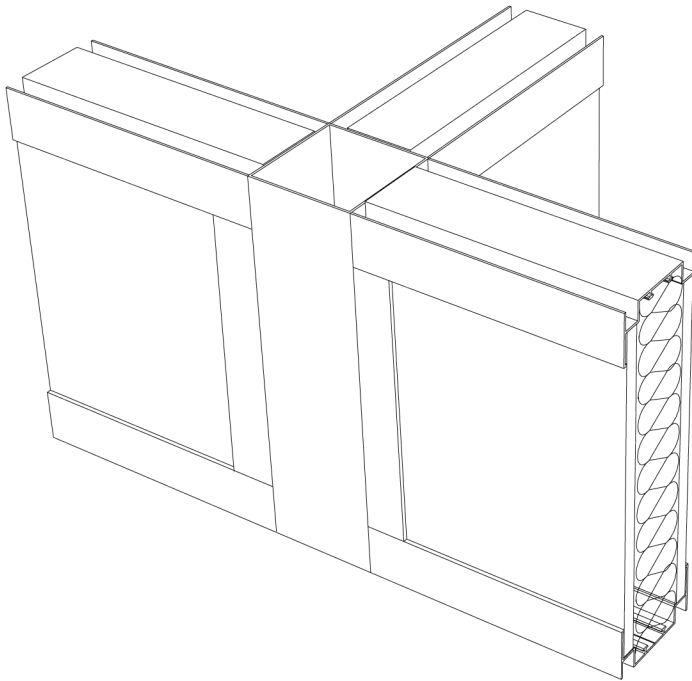
Square Post





PROFILES	
	Top and Bottom Track
	Genesis or Flex Stud
	Genesis or Flex Trim
	Stud Glazing Bead
	Track Glazing Bead
	Flex Female Angle
	Flex Male Angle
	Door Frame





#### PROFILES



Top and Bottom Track



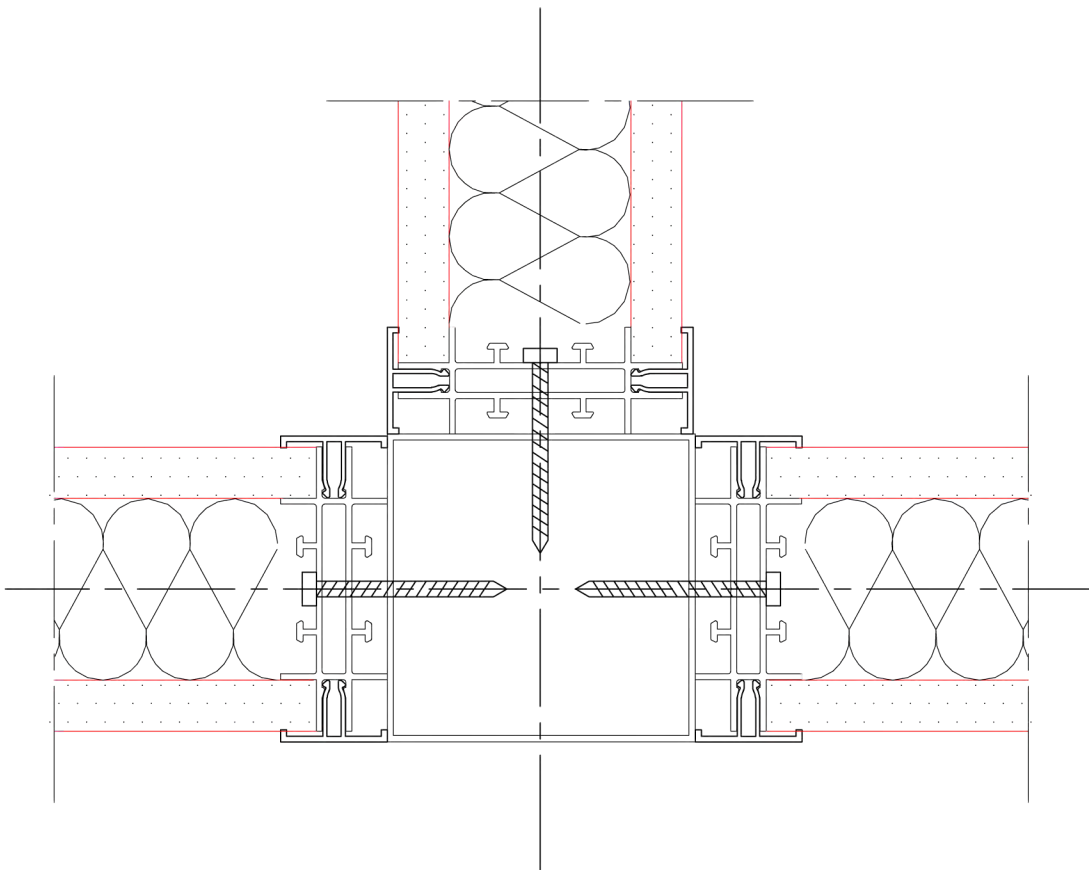
Genesis or Flex Stud

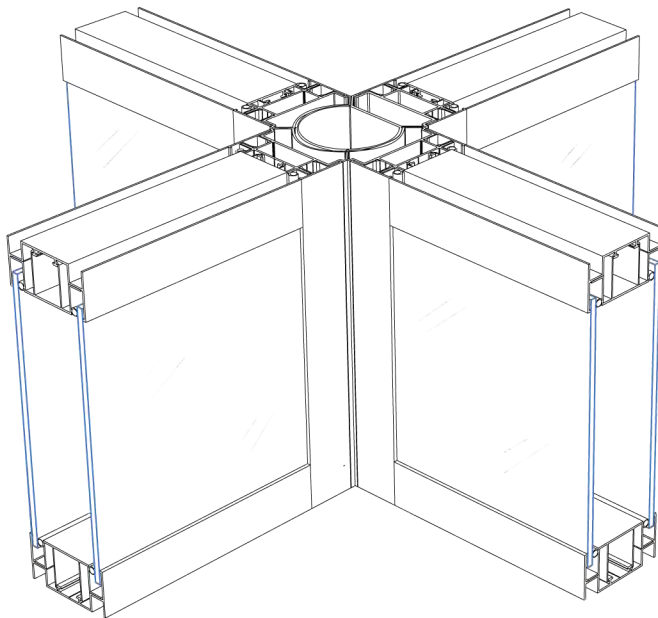


Genesis or Flex Trim



Square Post





#### PROFILES



Top and Bottom Track



Genesis or Flex Stud



Genesis or Flex Trim



Stud Glazing Bead



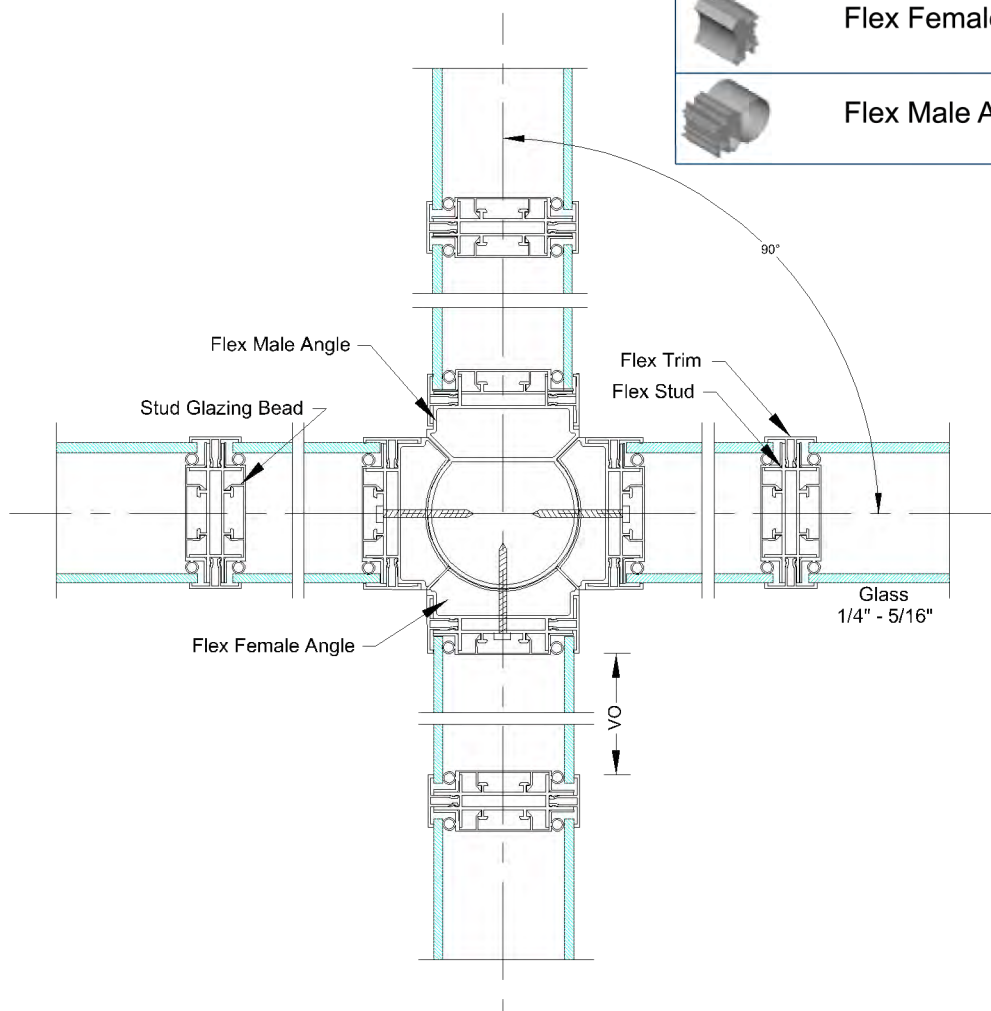
Track Glazing Bead



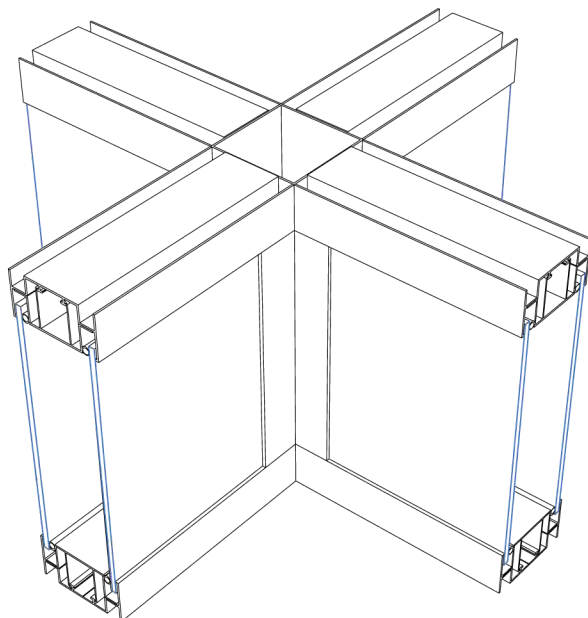
Flex Female Angle



Flex Male Angle







#### PROFILES



Top and Bottom Track



Genesis or Flex Stud



Genesis or Flex Trim



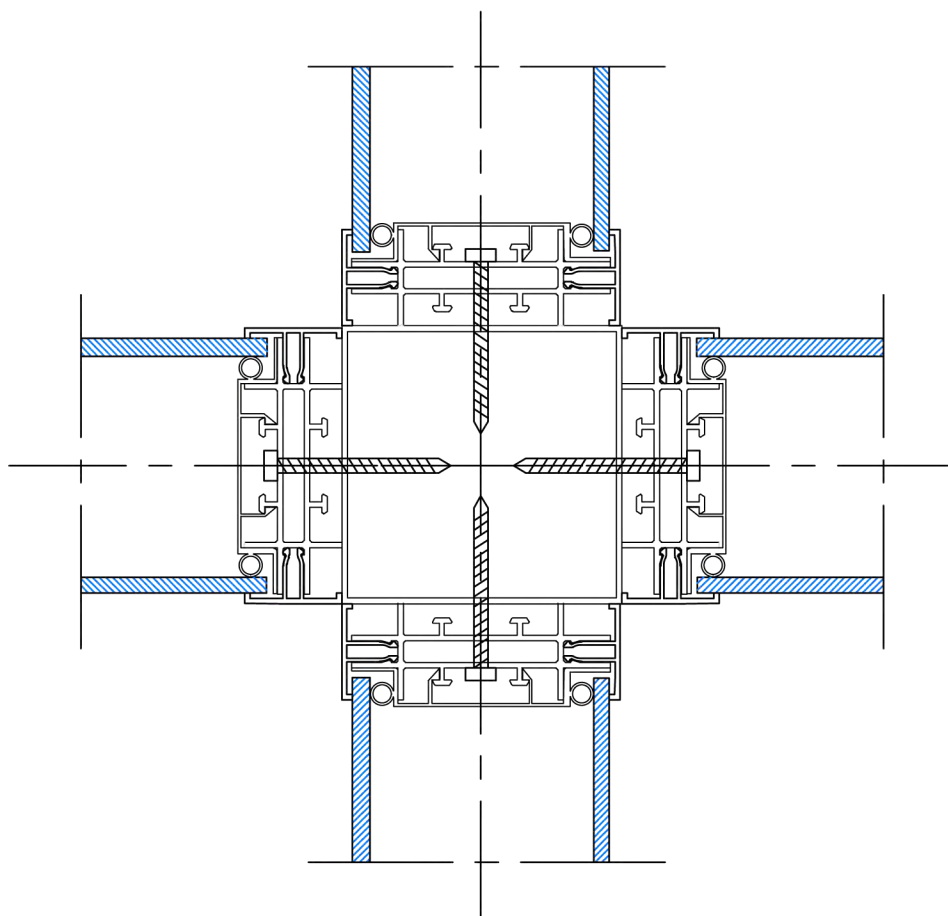
Stud Glazing Bead

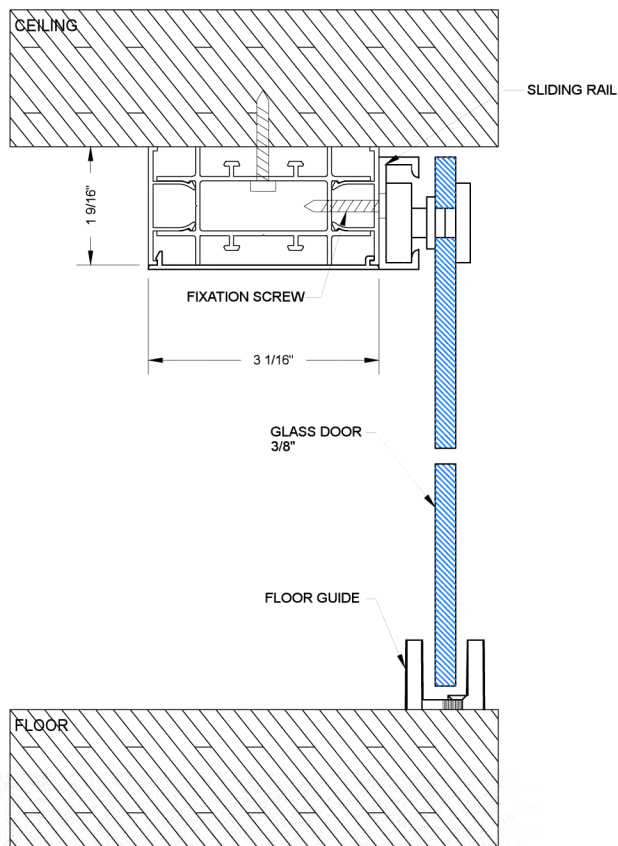


Track Glazing Bead

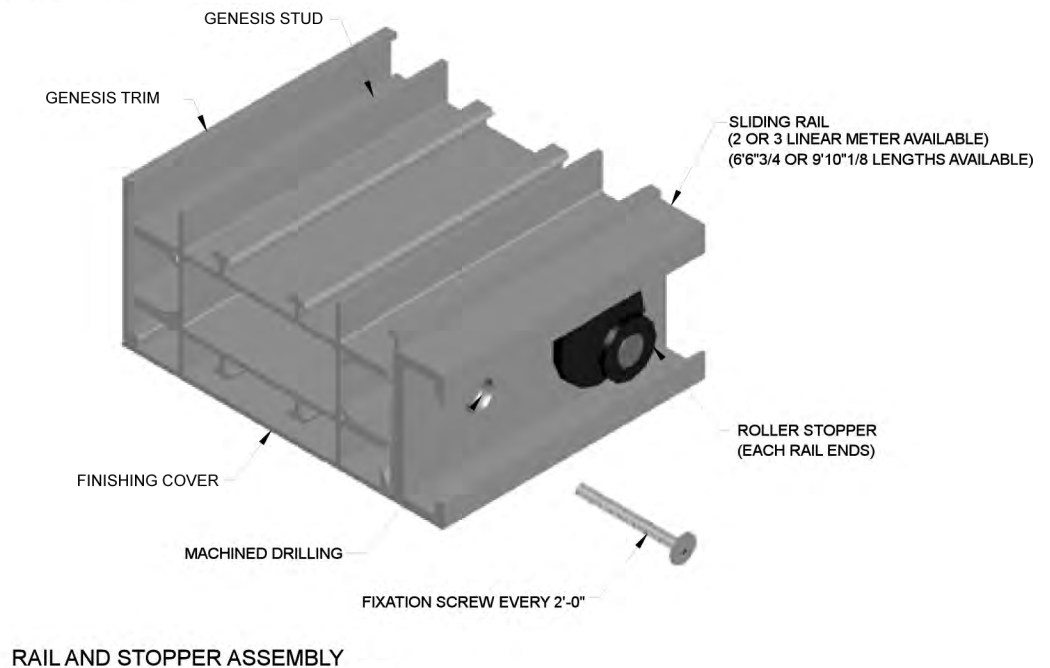


Square Post

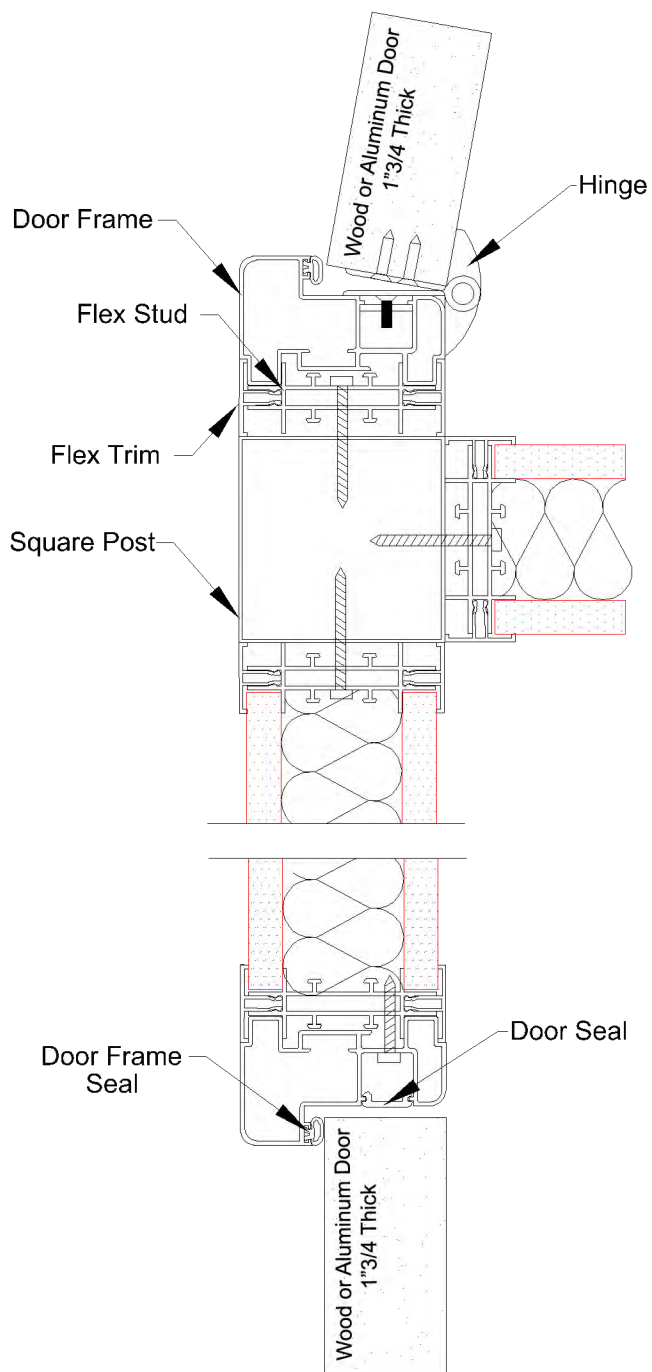









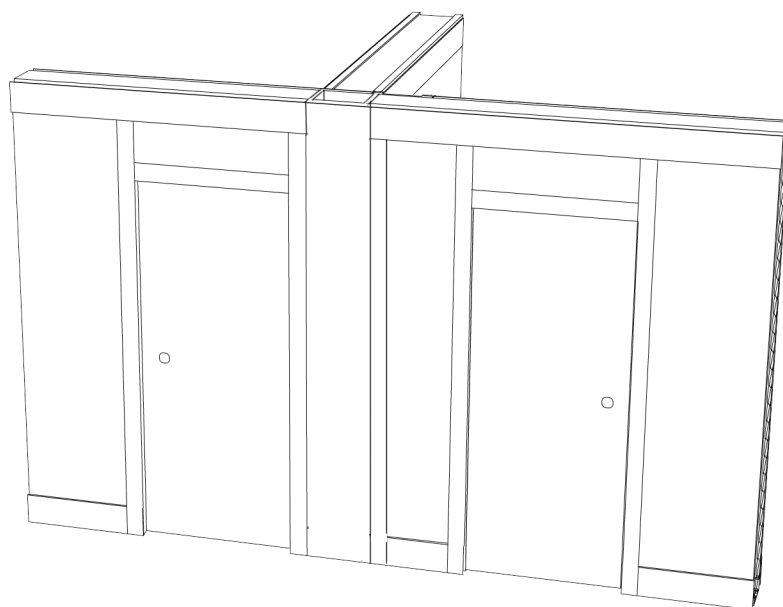
DOOR OPENING VERTICAL SECTION

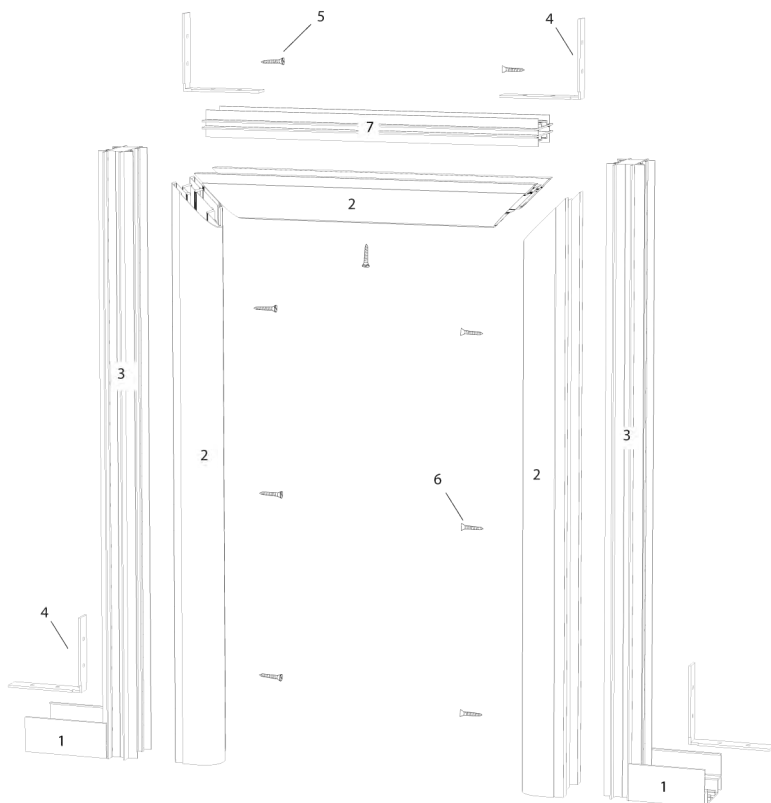


NOTICE: THE STANDARD TOP TRACK (NW 80-40) MUST BE REPLACED BY A CLASSIC STUD ALONG THE TOTAL SLIDING RAIL LENGTH



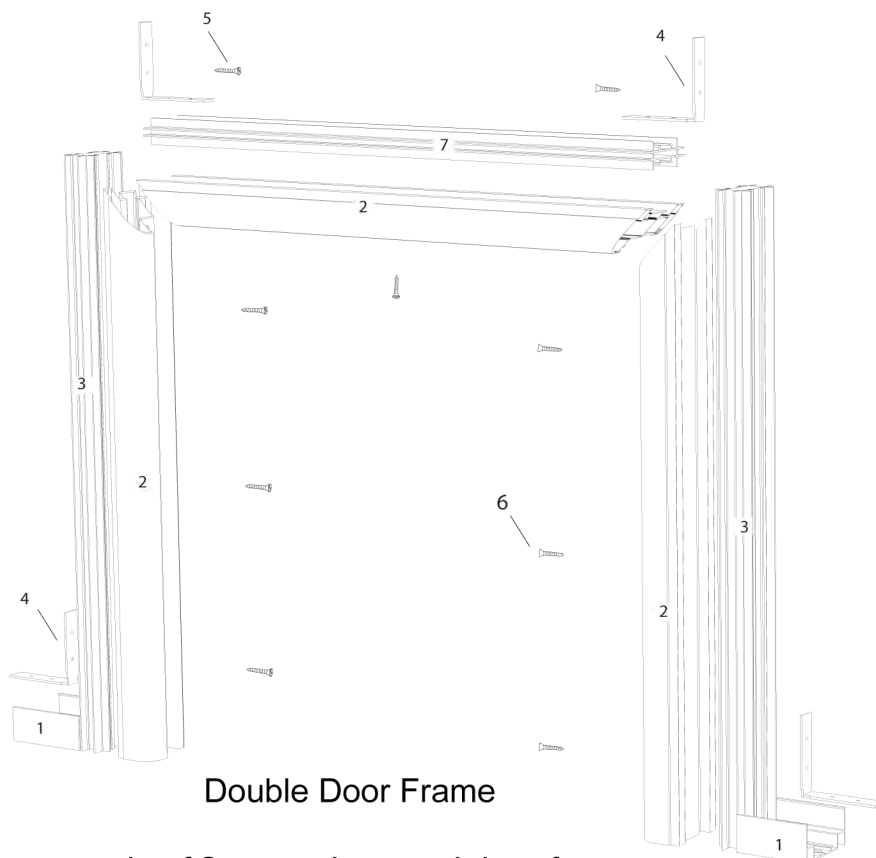
PROFILES	
	Top and Bottom Track
	Genesis or Flex Stud
	Genesis or Flex Trim
	Door Frame
	Square Post





Single Door Frame

PROFILES	
1	Top and Bottom Track
2	Door Frame
3	Genesis Stud
4	Flex L-Bracket
5	L-Bracket Screw
6	Frame Fixation Screws
7	Flex Stud



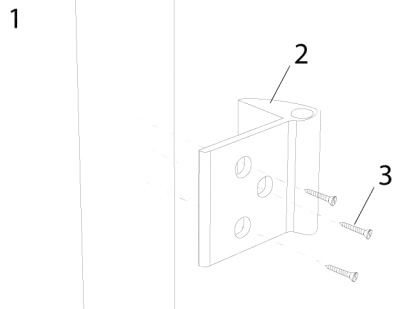
Double Door Frame

NOTE:

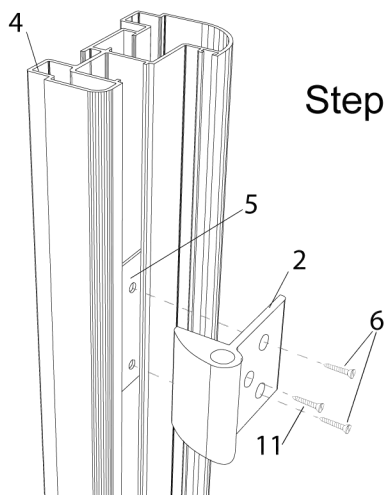
\*Vertical stud sits outside of floor track around door frame



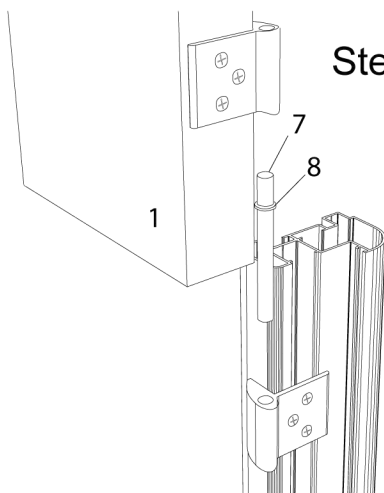
## Step 1



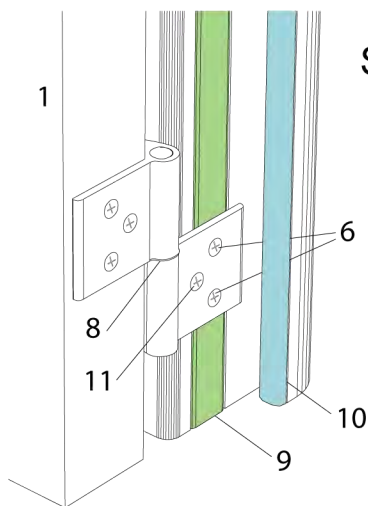
## Step 2



## Step 3



## Step 4



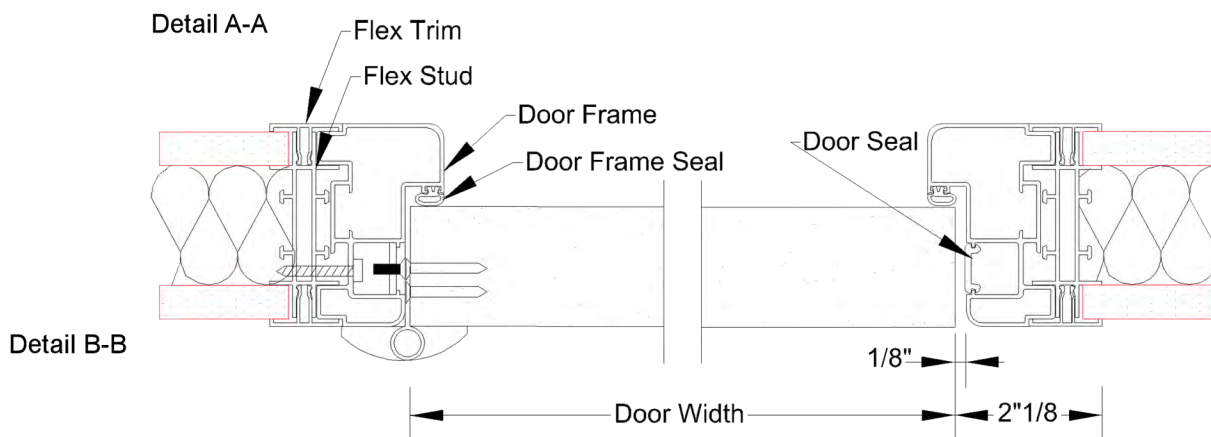
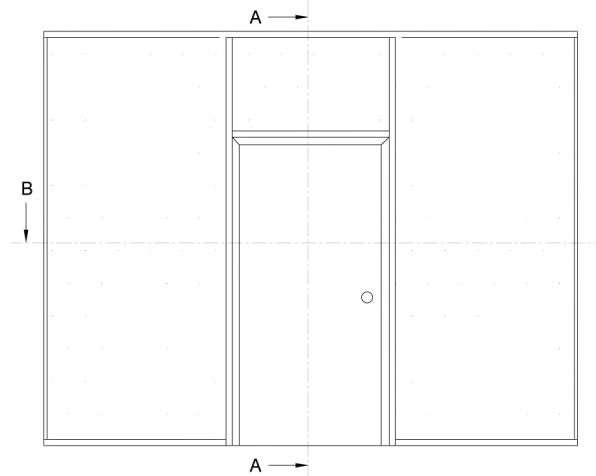
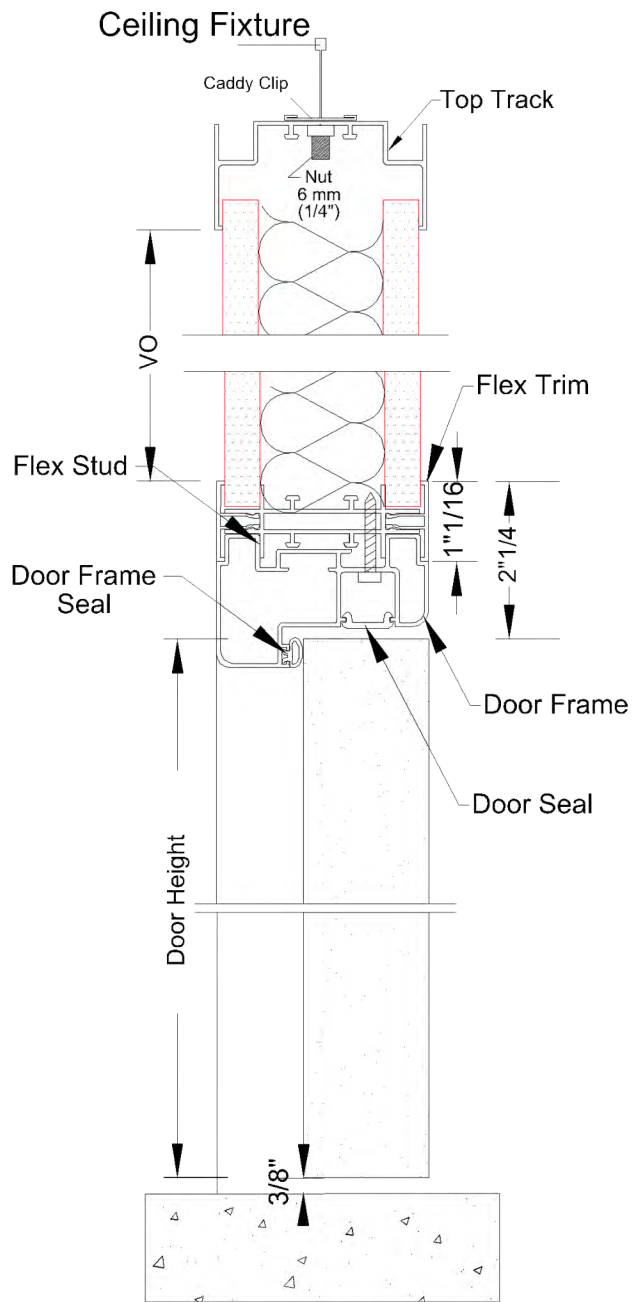
## PARTS

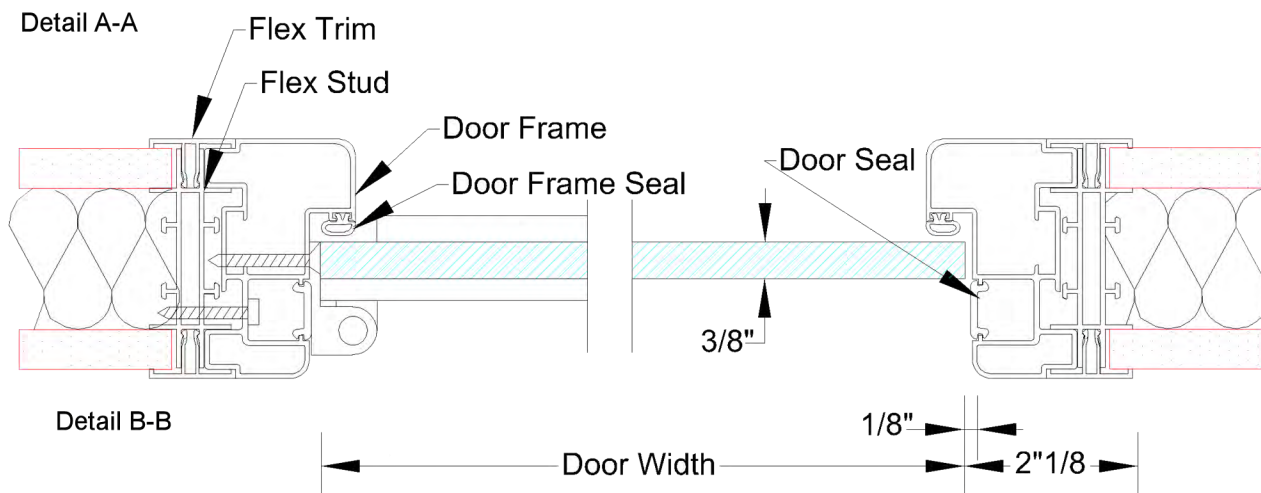
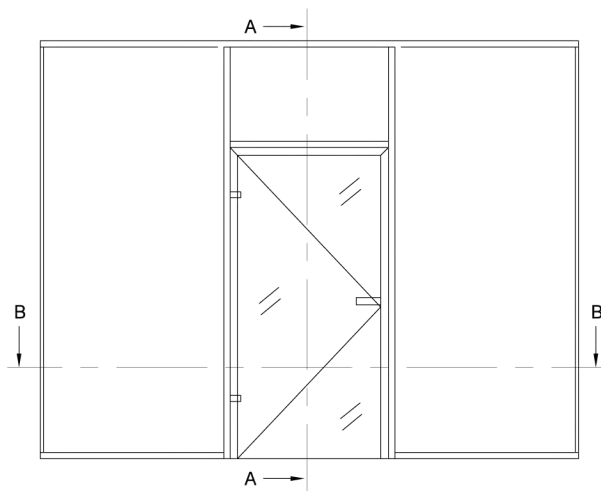
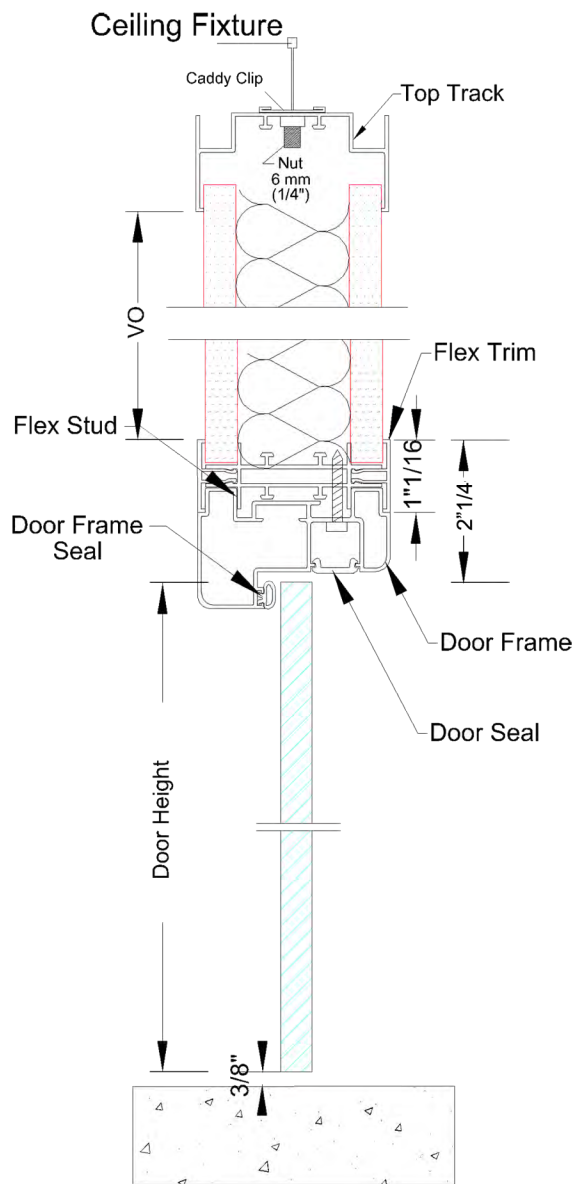
1	Door
2	Hinge
3	Door hinge wood screws (not-included)
4	Door frame
5	Hinge back plate
6	Hinge and frame screws for fixing hinge to back plate
7	Hinge pin
8	Teflon washer
9	Door seal
10	Seal for door frame
11	Locking screw (not-included)

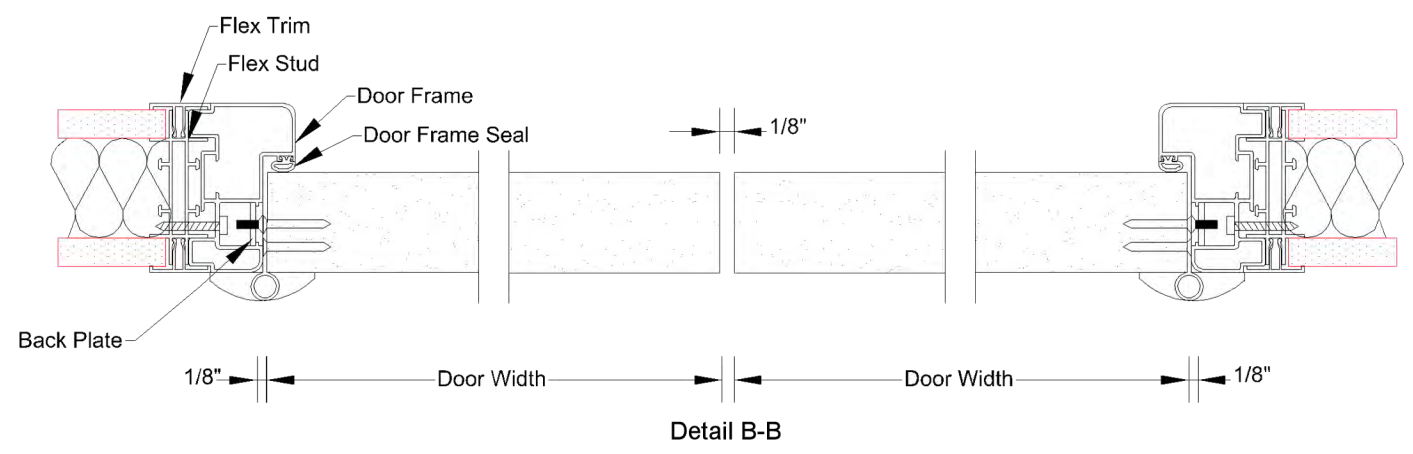
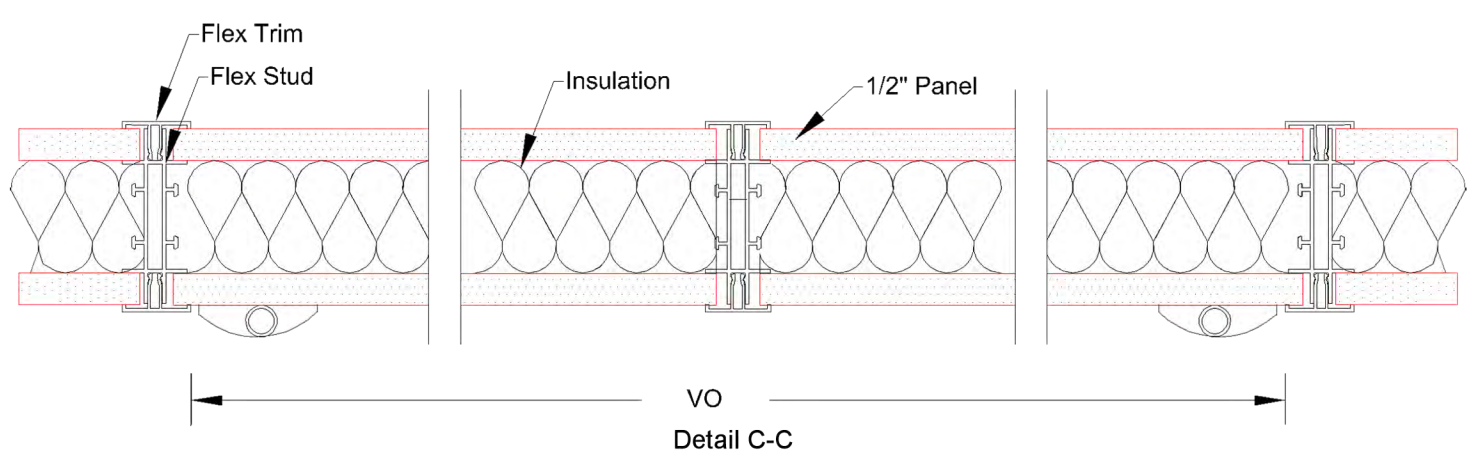
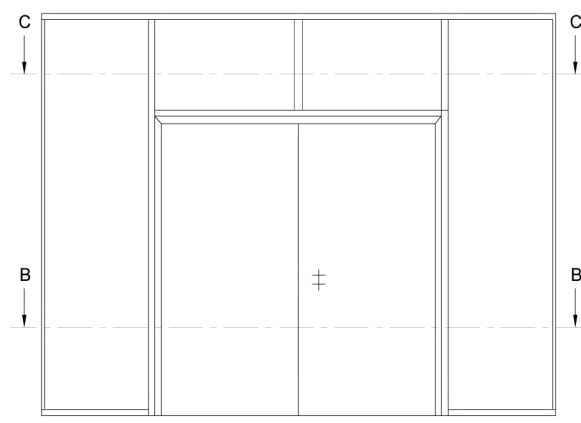
## NOTE:

\*Standard door 36"x 84" : 3 pairs of hinges

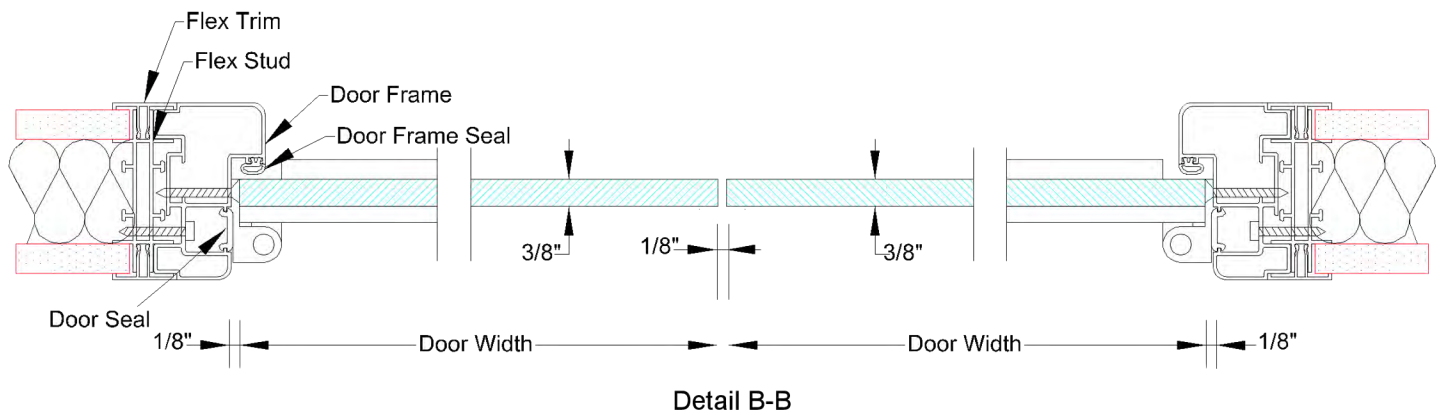
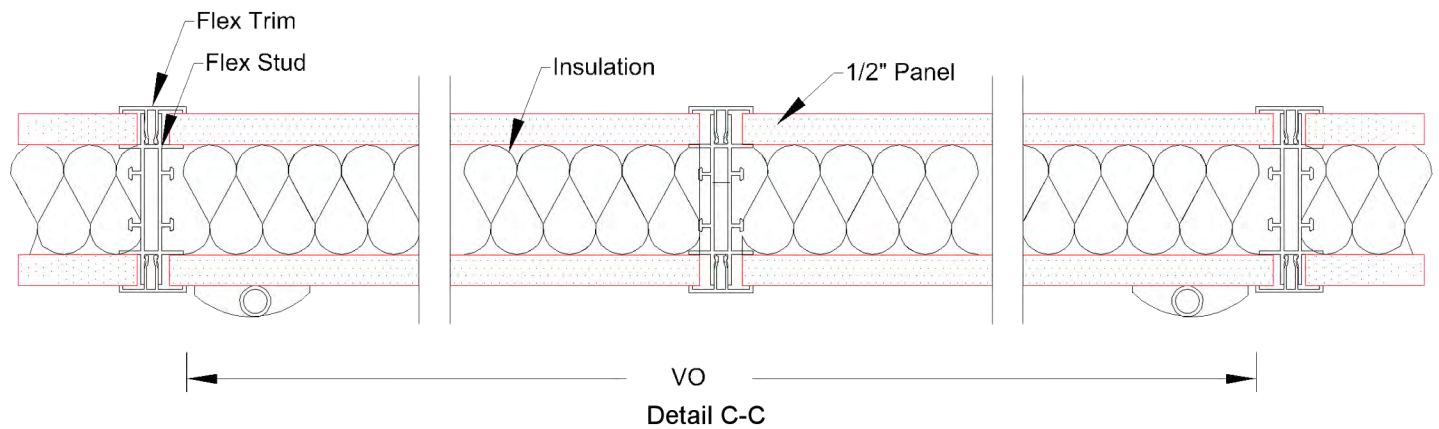
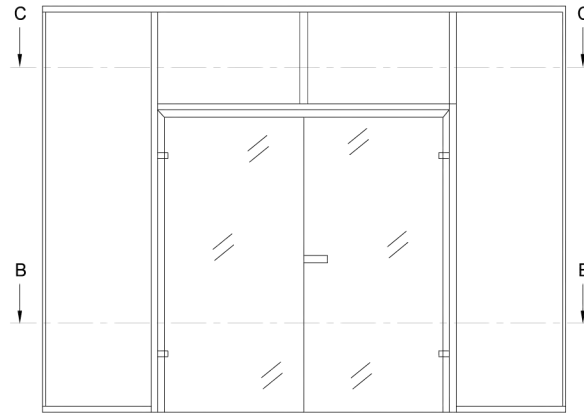
\*Door with larger dimensions : 4 pairs of hinges or more

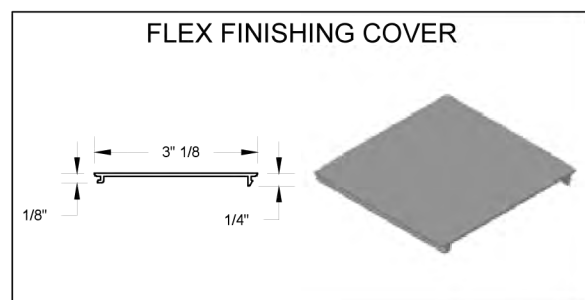
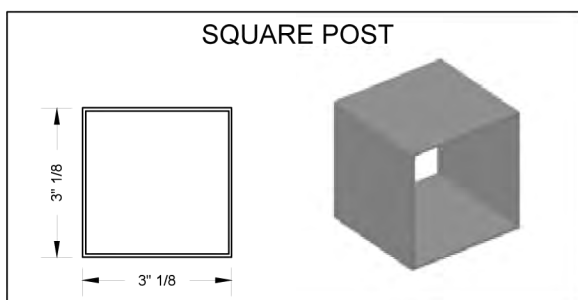
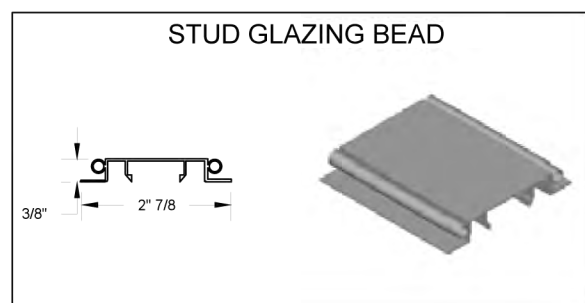
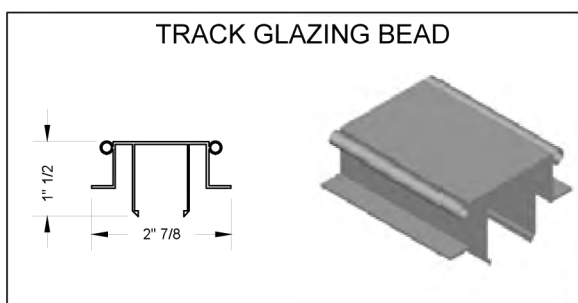
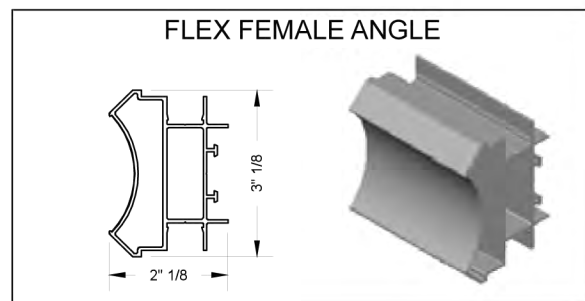
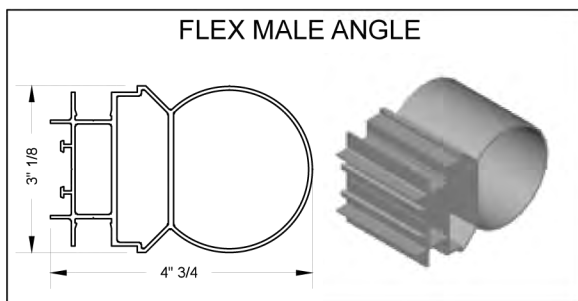
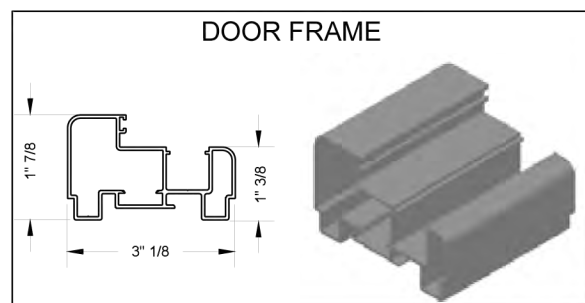
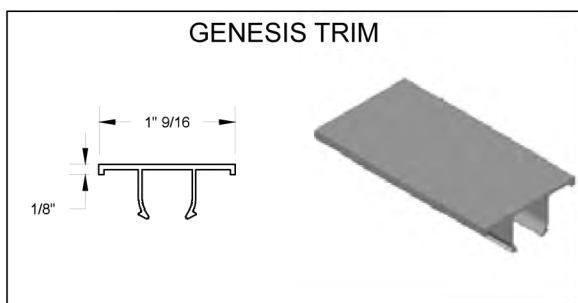
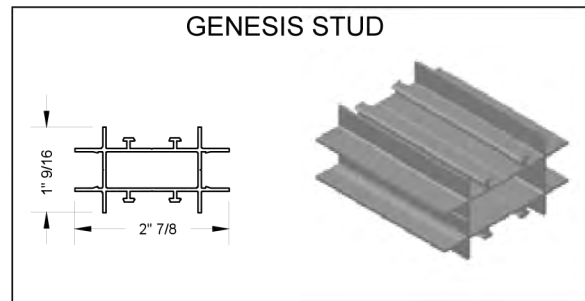
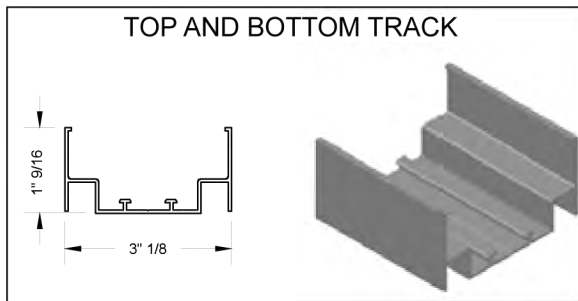


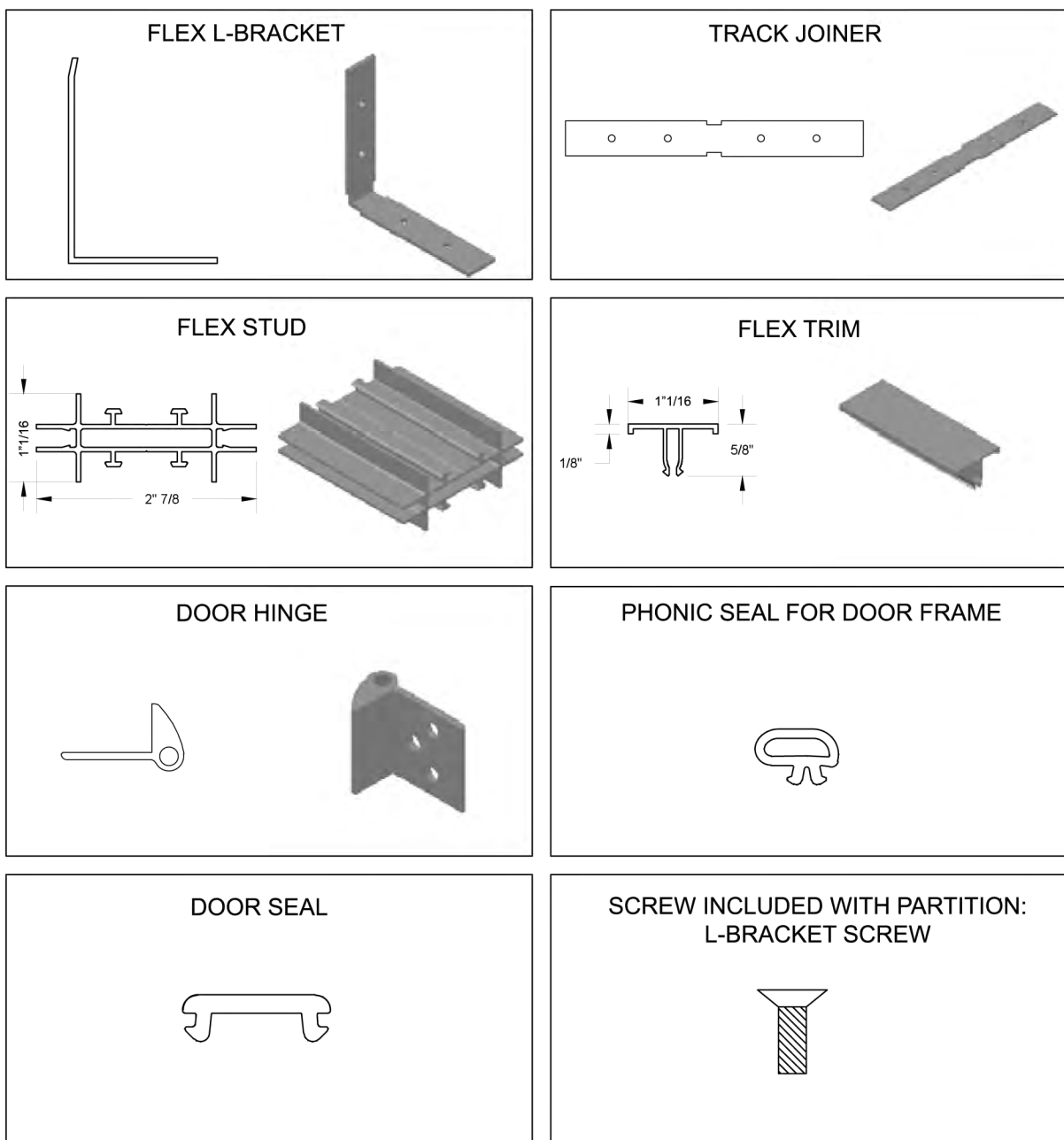












#### OTHER SCREWS (NOT INCLUDED)

- Fixation screw
- Tapcon screw
- Flat headed wood screws 1 1/8 long with 1/4" diameter
- Self tapping screws of different sizes diameter 1/4" lengths: 2", 1 1/8, 5/8"
- Velcro roll
- Double faced tape
- Drywall fixing screw

## APPENDIX 1

### CUTTING INSTRUCTIONS FOR OPENINGS BASED ON VO DIMENSION

**VO = Visible opening**

( Dimension between 2 aluminum profiles horizontally or vertically)

#### Wood Panel and Glass table

Opening	Horizontal dimension between posts	Vertical dimensions		
		Between track and track	Between track and stud	Between stud and stud
Panels	VO + 9/16"	VO + 1"7/16	VO + 1"9/32	VO + 11/16"
Glass	VO + 1/2"	VO + 3/4"	VO + 1"1/8	VO + 5/8"

#### Table for aluminum, Glass or Wood doors

Opening	Horizontal dimensions	Vertical dimensions
Wood or aluminum door	VO - 2"1/4	VO - 1"5/8

## APPENDIX 2

### TABLE FOR PROFILES TO BE CUT IN FUNCTION OF DIMENSION

**Based on height: HT (Floor to ceiling height) or width: VO (visible opening)**

Profiles	Height	Width
Genesis or Flex Stud Against Wall	HT - 1"5/8	XXXX
Genesis or Flex Stud Between Tracks	HT - 1"5/8	XXXX
Genesis or Flex Stud for Doors	HT - 1"	XXXX
Genesis or Flex Stud for Horizontal Studs	XXXX	VO
Top and Bottom Track	XXXX	VO + 3"3/16
Genesis or Flex Trim Against Wall	HT - 3"3/16	XXXX
Genesis or Flex Trim Between Tracks	HT - 3"3/16	XXXX
Genesis or Flex Trim for Doors	HT - 1"5/8	XXXX
Genesis or Flex Trim for Horizontal Studs	XXXX	VO
Flex Male Angle	HT	XXXX
Flex Female Angle	HT	XXXX
Track Glazing Bead	XXXX	VO
Stud Glazing Bead	VO	VO

## APPENDIX 3

### ADDITIONAL INFORMATION FOR OTHER COMPONENTS

- 1- **Panels:** Thickness 1/2"
- 2- **Insulation:** Thickness 1"1/2 (Roxul) RHF
- 3- **Glass:** Thickness 1/4"-5/16" (clear, tempered, or laminated)
- 4- **Wood Door:** Thickness 1"3/4



