

VIEW SERIES

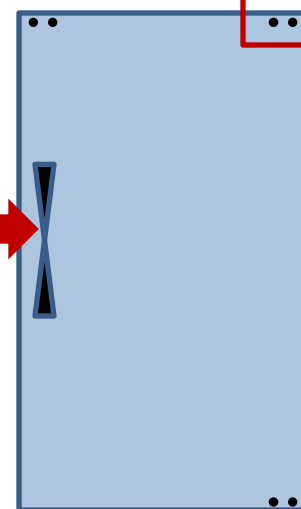
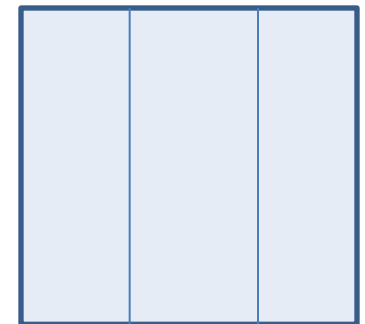
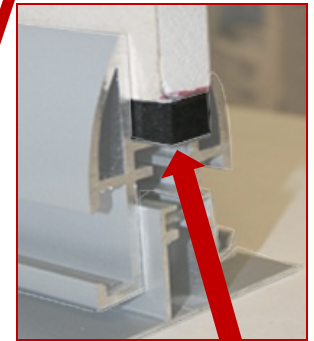
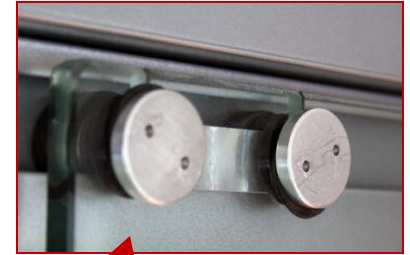
Track Assembly & Installation



Minimum Parts Using Existing Walls

- 1) VIEW Top/Bottom Universal Track
- 2) Track Guide
- 3) Level Adjusters
- 4) Glass Shims
- 5) Glass Caulk/Glazing Spline
- 6) Sliding Glass Door: (3 Sliding Carriages, 1 Bar Pull, 2 Door Stops)
- 7) Side Glass

Detail of Sliding Carriage:



6) Sliding Glass Door
INCLUDES: 3 sliding
carriages (see detail above),
2 door stops, & 1 bar pull.

5) Glass Caulk / Glazing Spline

7) Side Glass



FINAL ASSEMBLY

VIEW SERIES

MINIMUM AIR GAP
3/16TH INCH

VIEW TRACK

GLASS

GLASS CAULK/Glazing spline

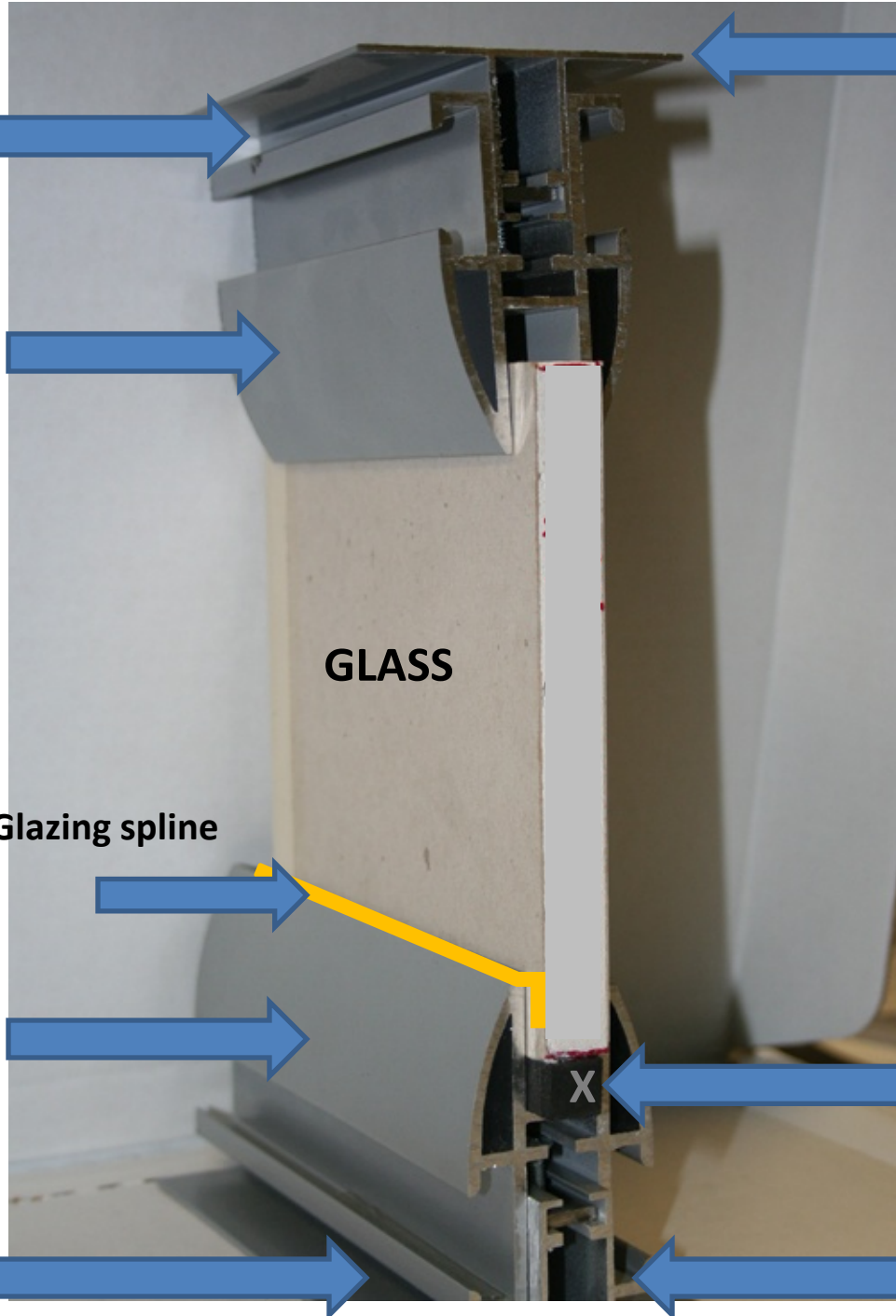
VIEW TRACK

MINIMAL AIR GAP
3/16TH INCH

TRACK GUIDE

GLASS SHIM

TRACK GUIDE



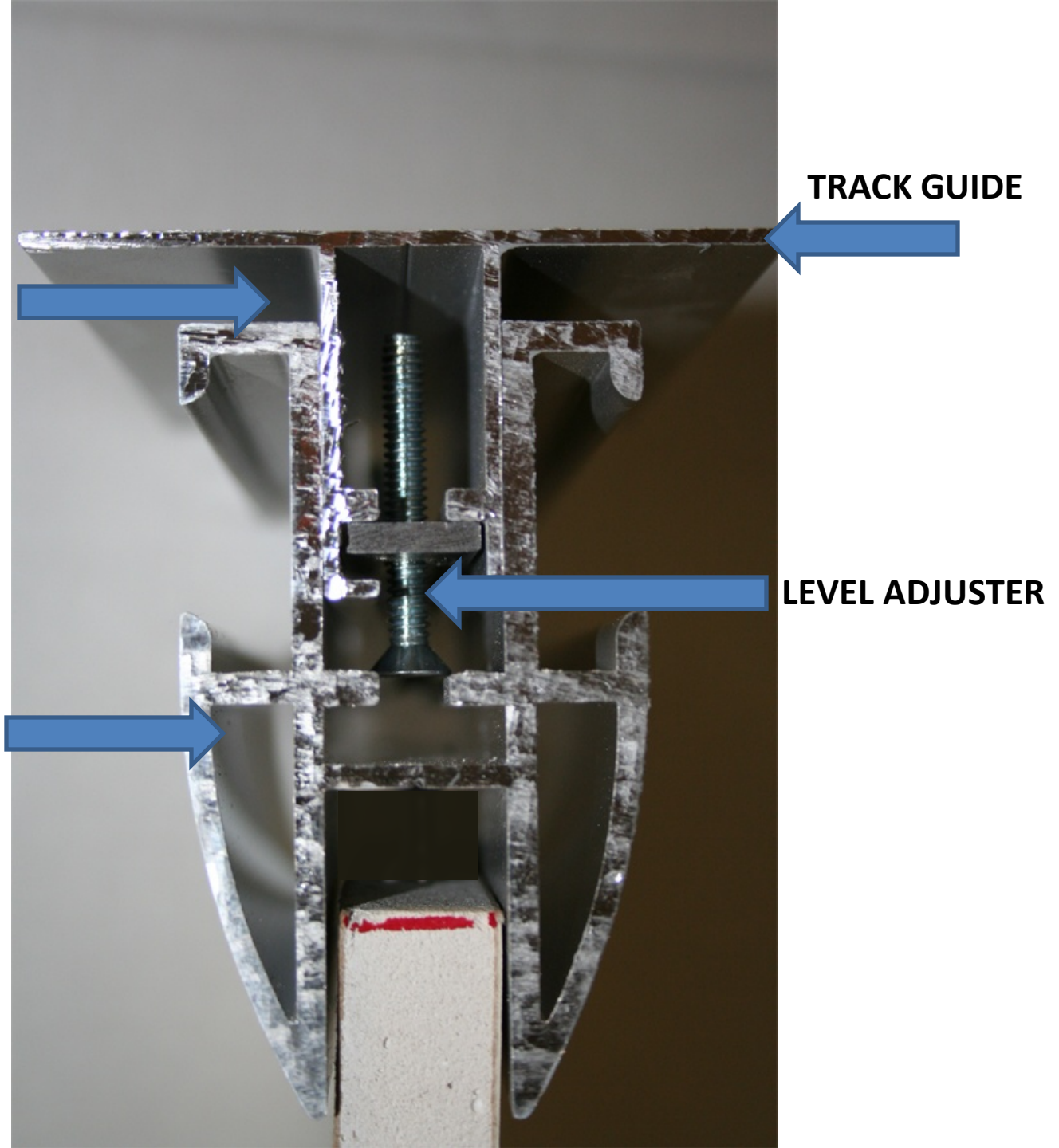
TOP TRACK ASSEMBLY

MINIMUM AIR GAP
3/16TH INCH

TRACK GUIDE

LEVEL ADJUSTER

VIEW TRACK



BOTTOM TRACK ASSEMBLY

GLASS CAULK/Glazing spline

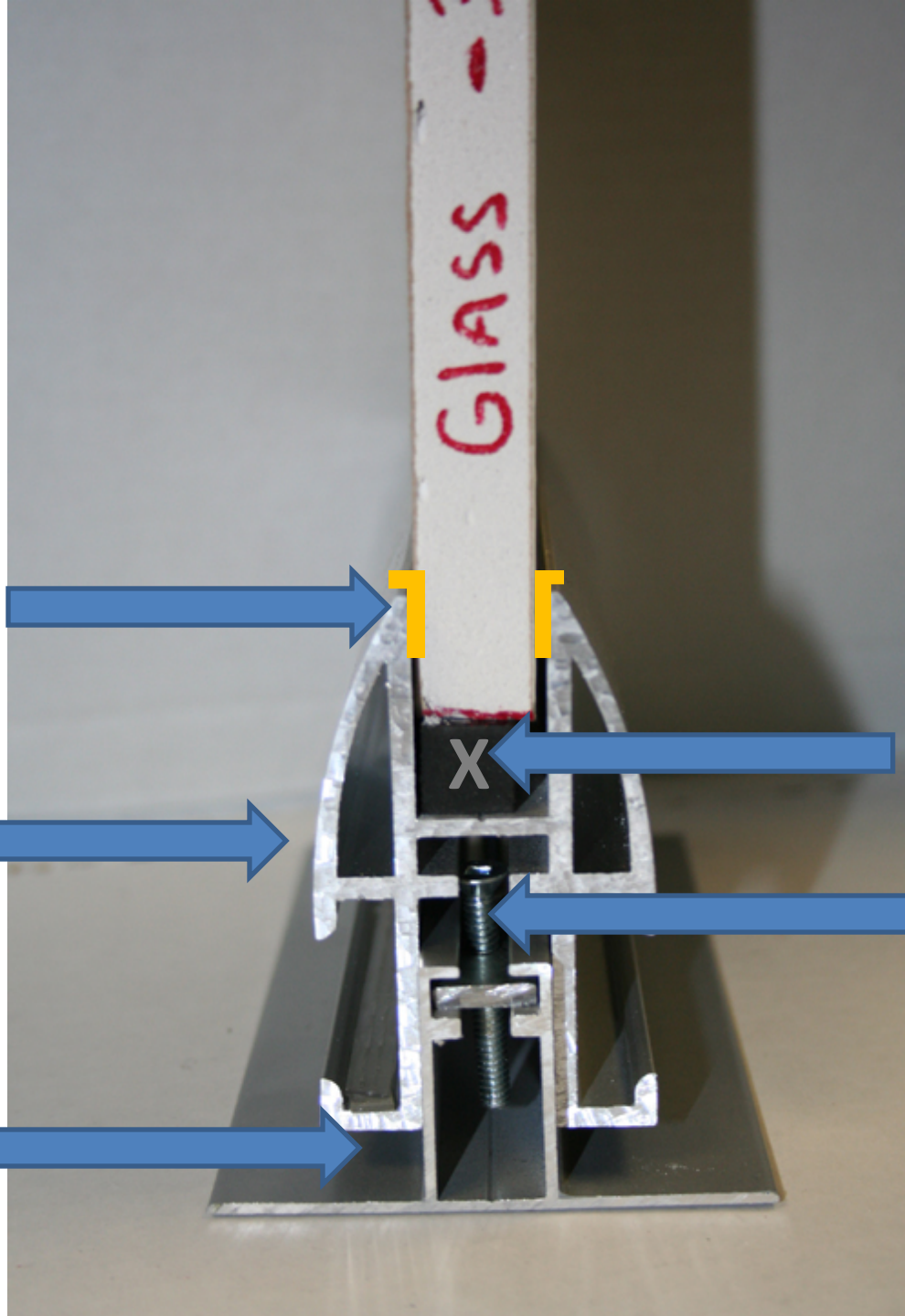
VIEW TRACK

MINIMUM AIR GAP
3/16TH INCH

Glass - 3

GLASS SHIM

LEVEL
ADJUSTER



QUESTIONS TO ASK:

1. Are my Tracks Level?

2. Do I have the required Minimum
Air Gap?

NOTE: If flooring is not down you
must compensate for its thickness:

Min air gap 3/16" + flooring thickness

3. Have I secured the Track Area to
the Deck above the Door
opening?

4. Is the Glass properly secured in
Top Track?

MINIMUM AIR GAP
3/16TH INCH

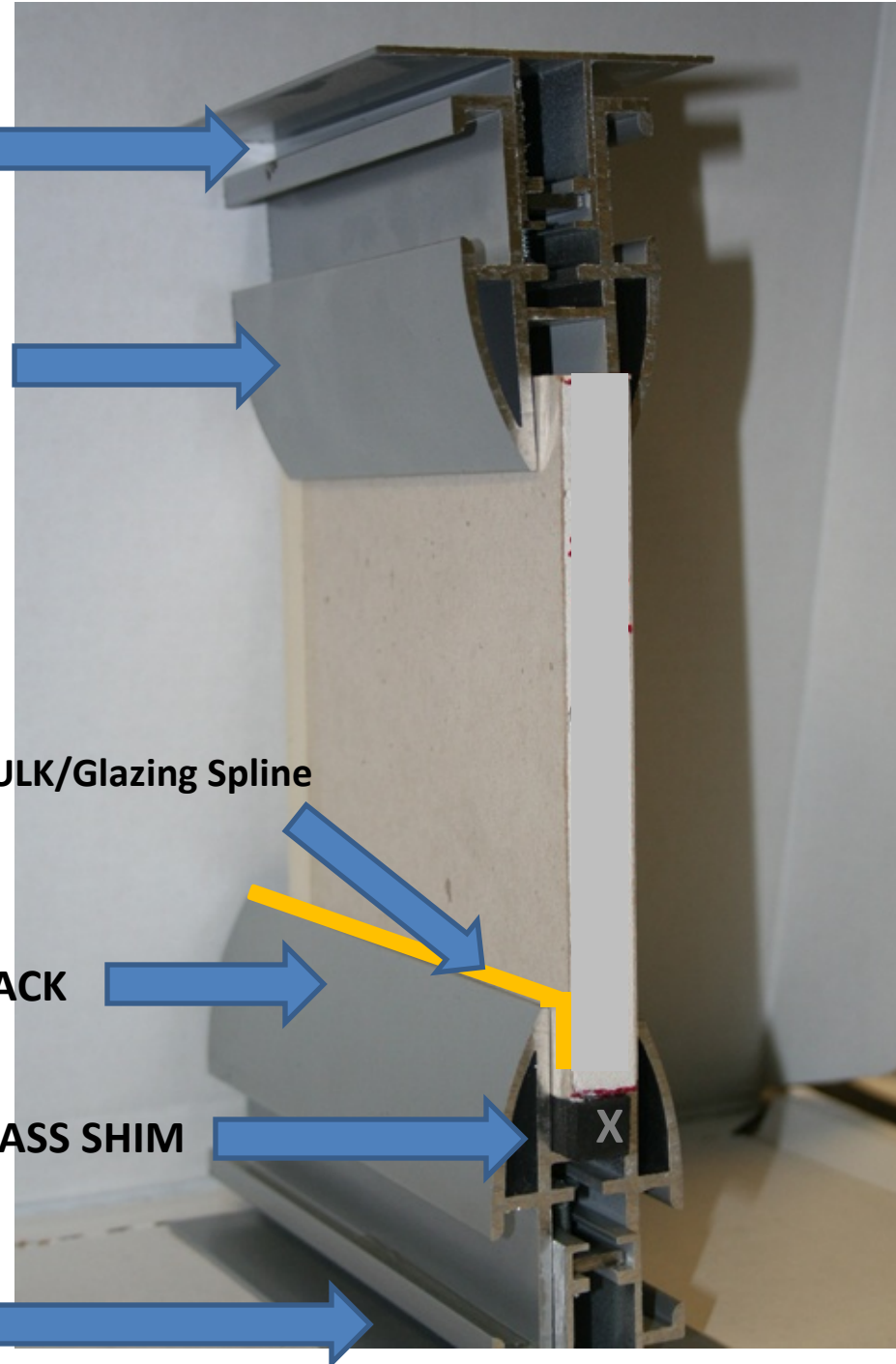
VIEW TRACK

GLASS CAULK/Glazing Spline

VIEW TRACK

GLASS SHIM

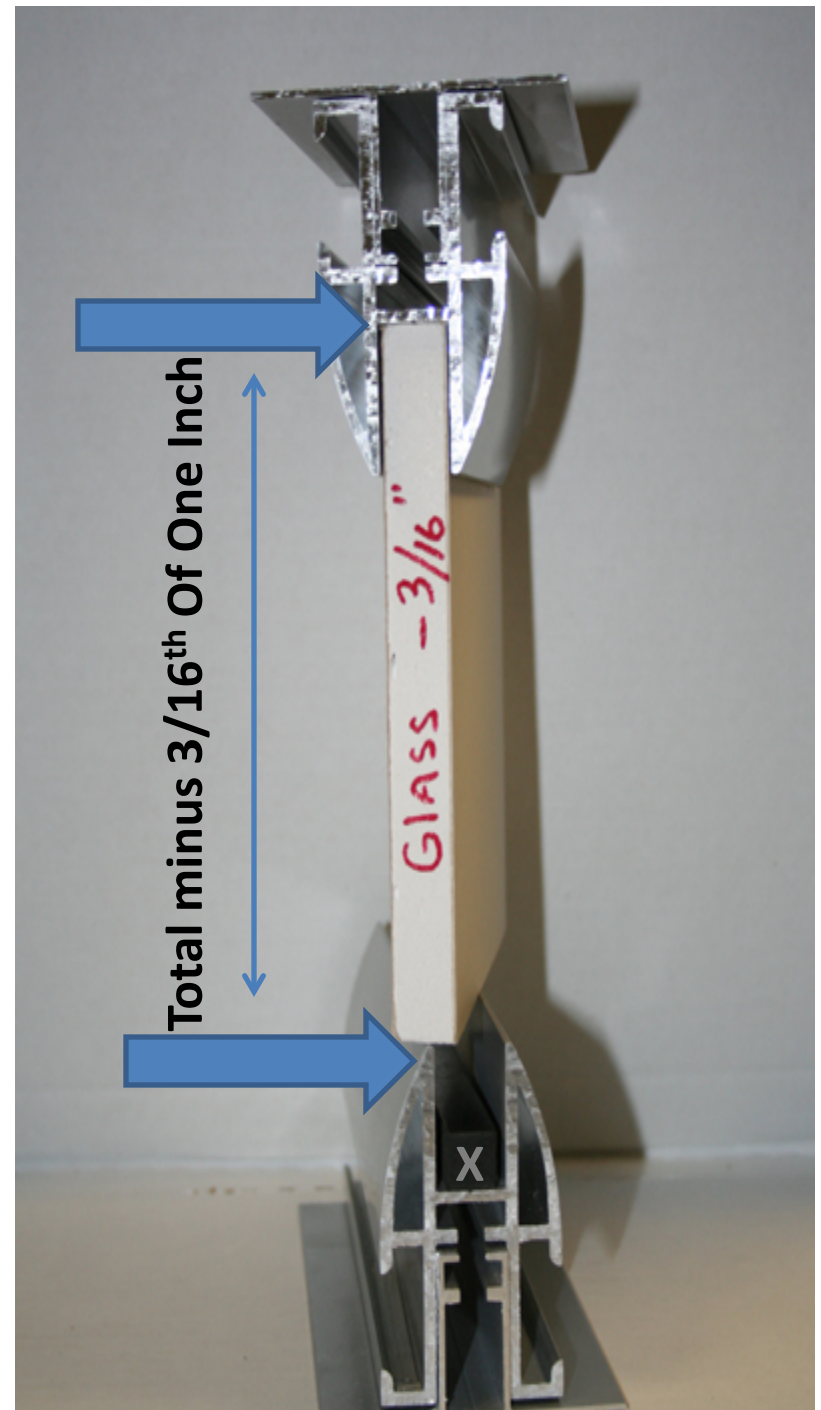
MINIMUM AIR GAP
3/16TH INCH



GLASS MEASUREMENT

Measure from the Inside of the Top Track to the Top Edge of the Bottom Track and Subtract $3/16^{\text{th}}$ of an Inch.

Total Distance Minus $3/16''$ = Glass Length



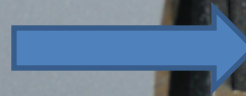
GLASS SPACER DETAIL

GLASS CAULK/Glazing Spline

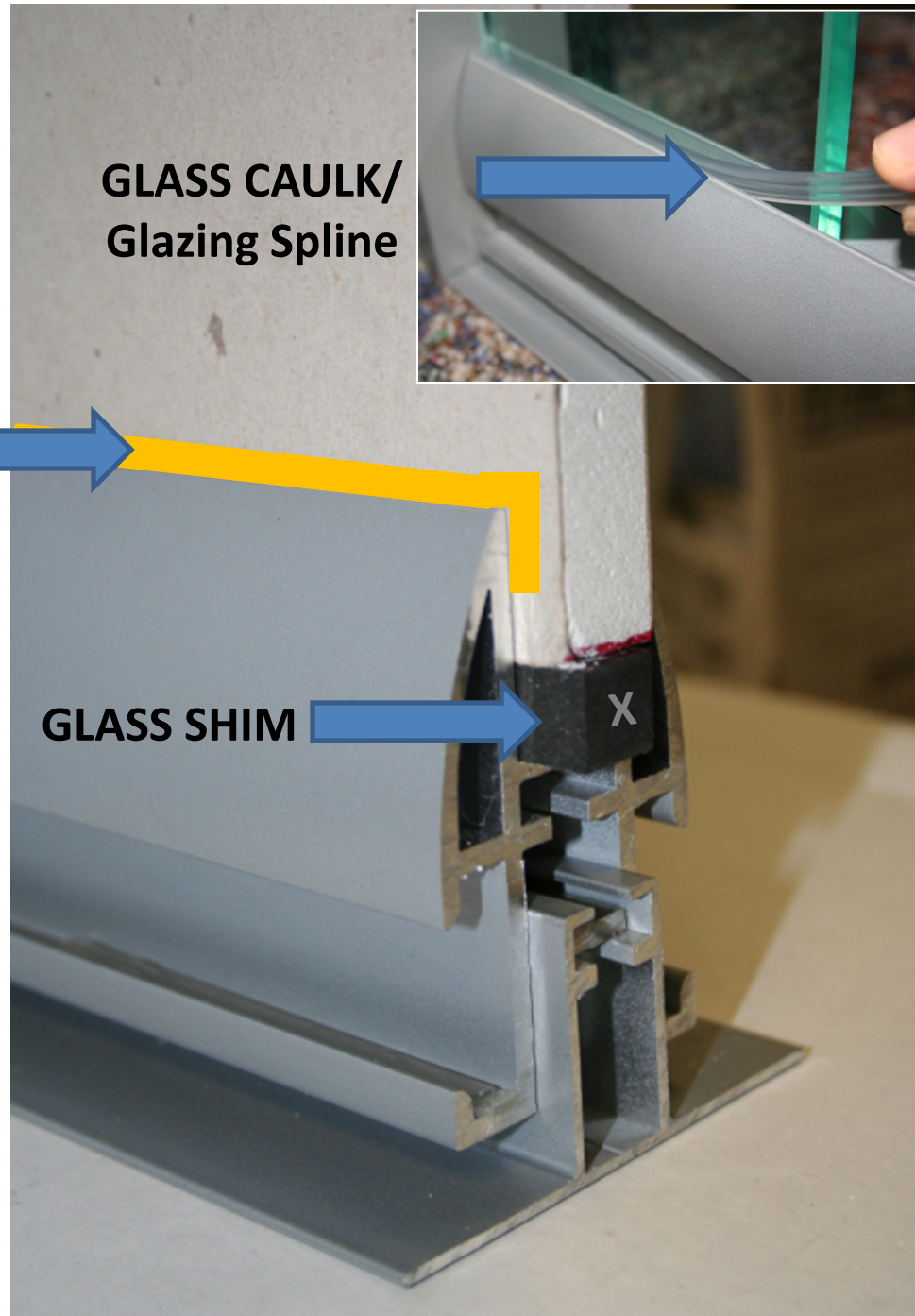


Note: Additional Shims can be installed to achieve proper securement in the Top Track.

GLASS SHIM



GLASS CAULK/
Glazing Spline



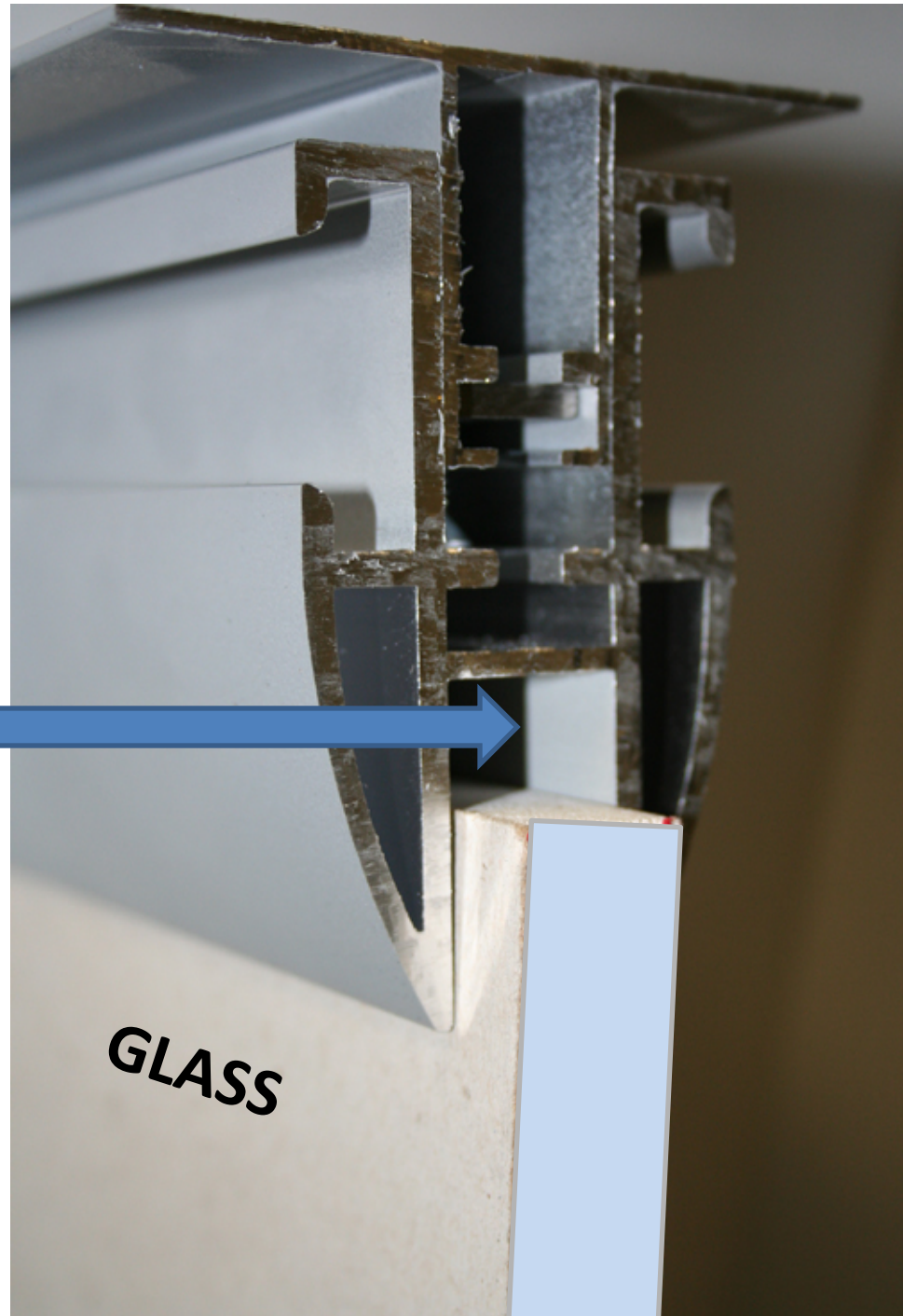
TOP TRACK DETAIL WITH GLASS INSTALLED

AIR GAP AT TOP OF GLASS PANEL

Avoid large air gaps by
installing additional shims in
the Bottom Track.



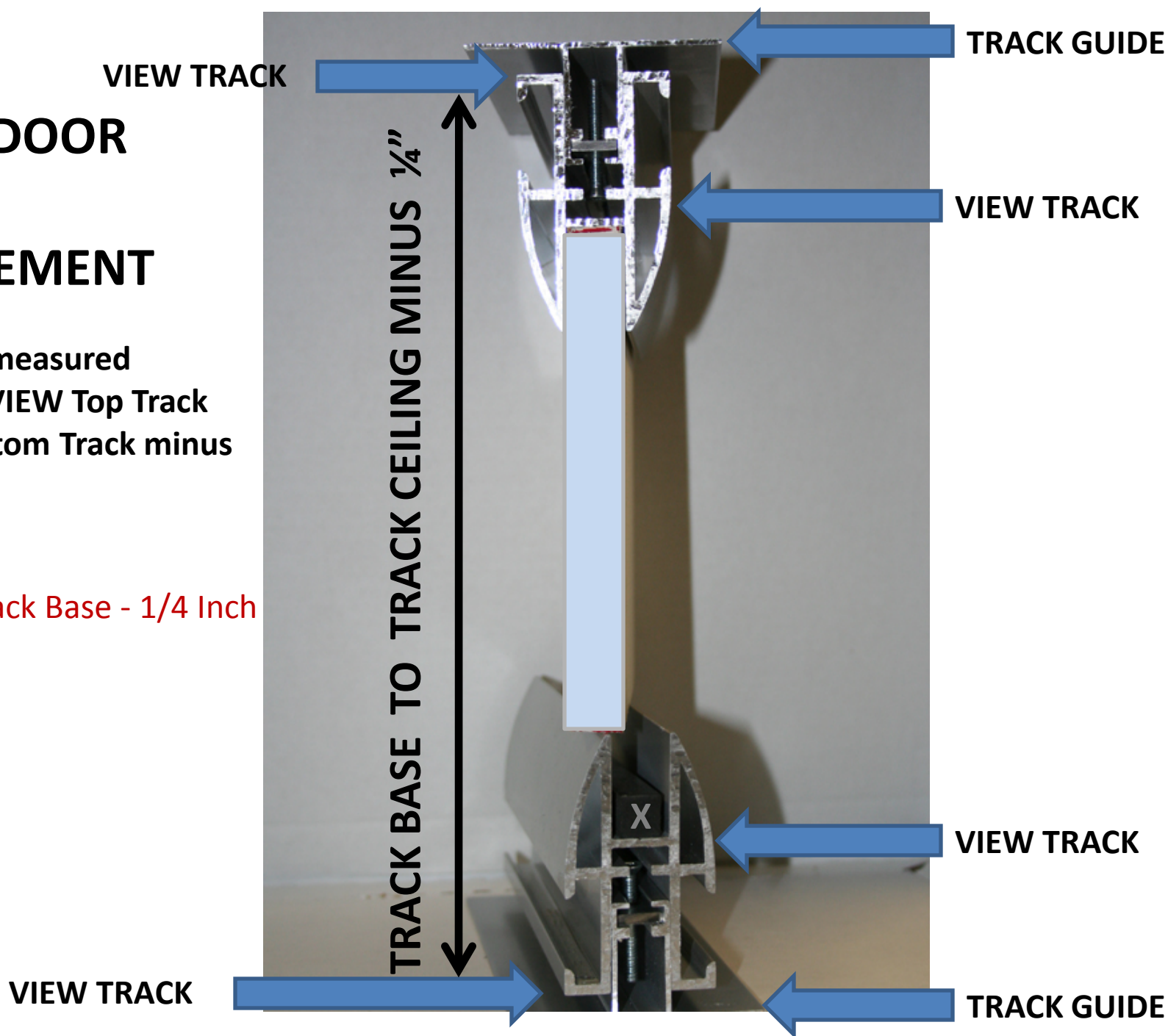
GLASS



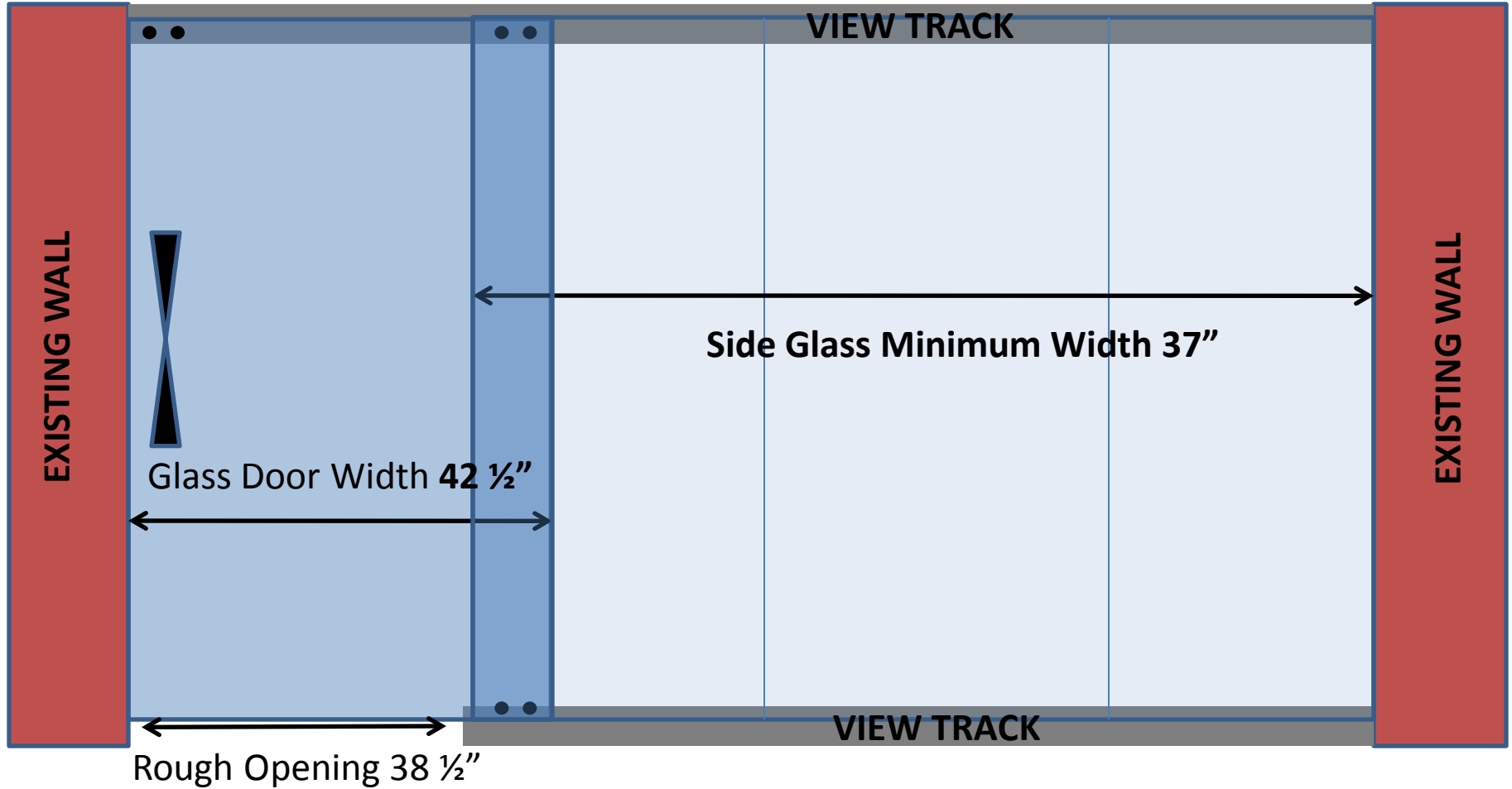
SLIDING DOOR GLASS MEASUREMENT

Door Glass is measured
between the VIEW Top Track
and VIEW Bottom Track minus
 $\frac{1}{4}$ "

Track Base + Track Base - $\frac{1}{4}$ Inch



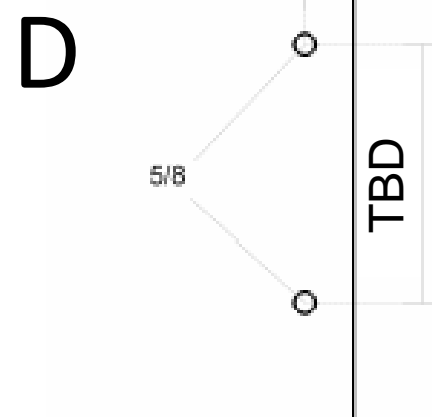
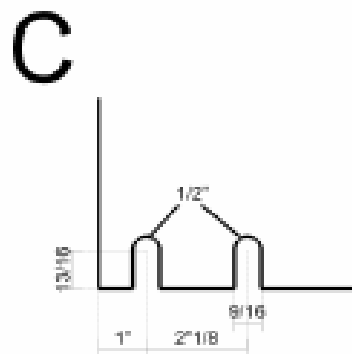
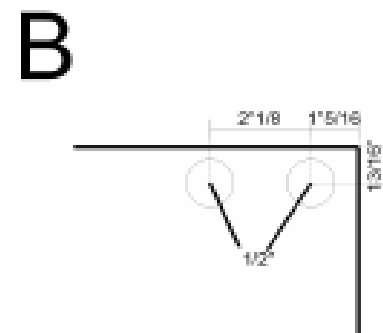
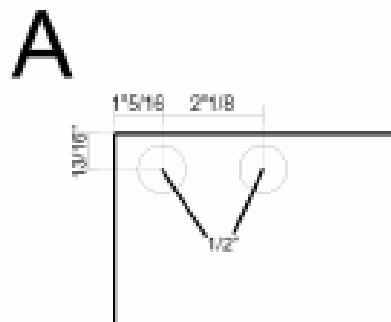
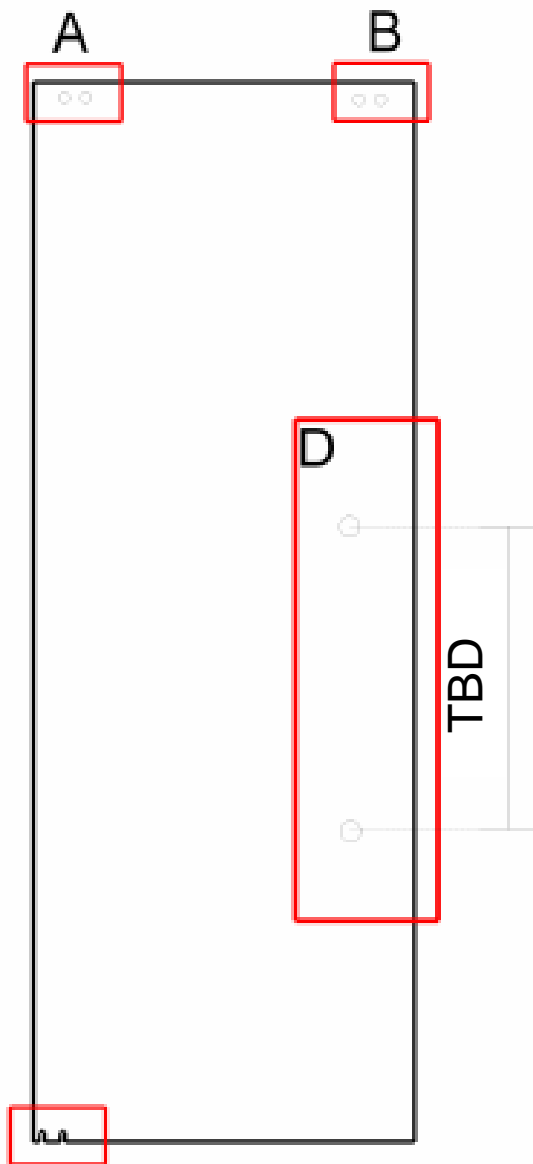
VIEW SERIES



DIMENSIONS TO ACHIEVE A 33" FINISH OPENING

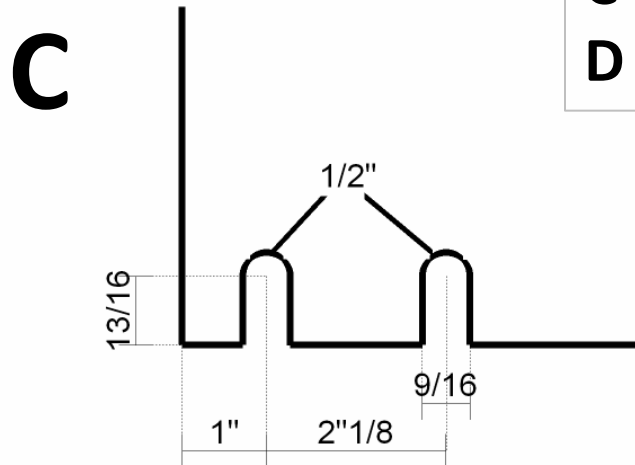
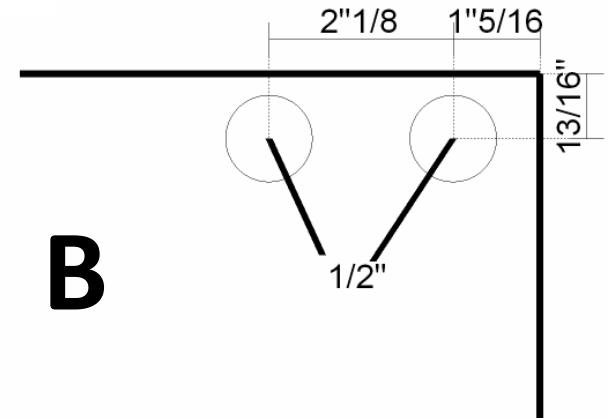
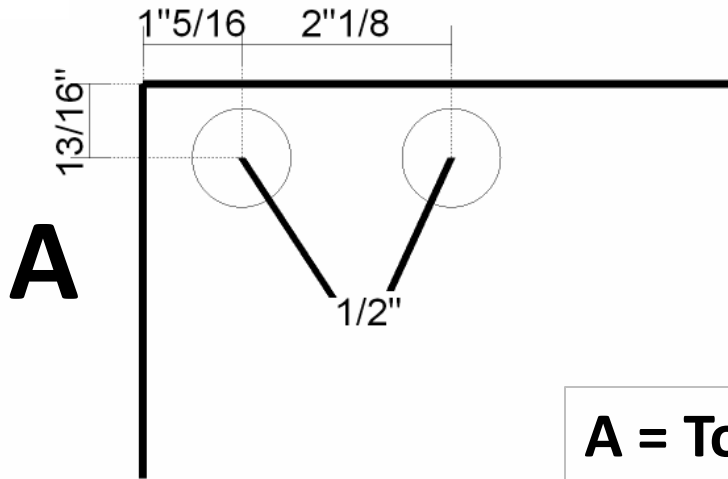
SLIDING DOOR GLASS TEMPLATE

With Standard Bar Pull

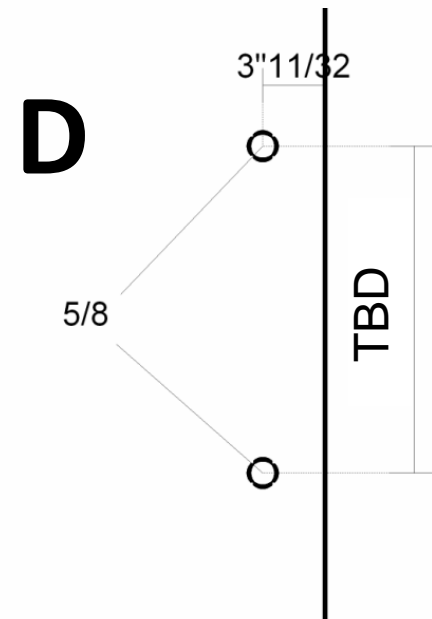


SLIDING DOOR GLASS TEMPLATE

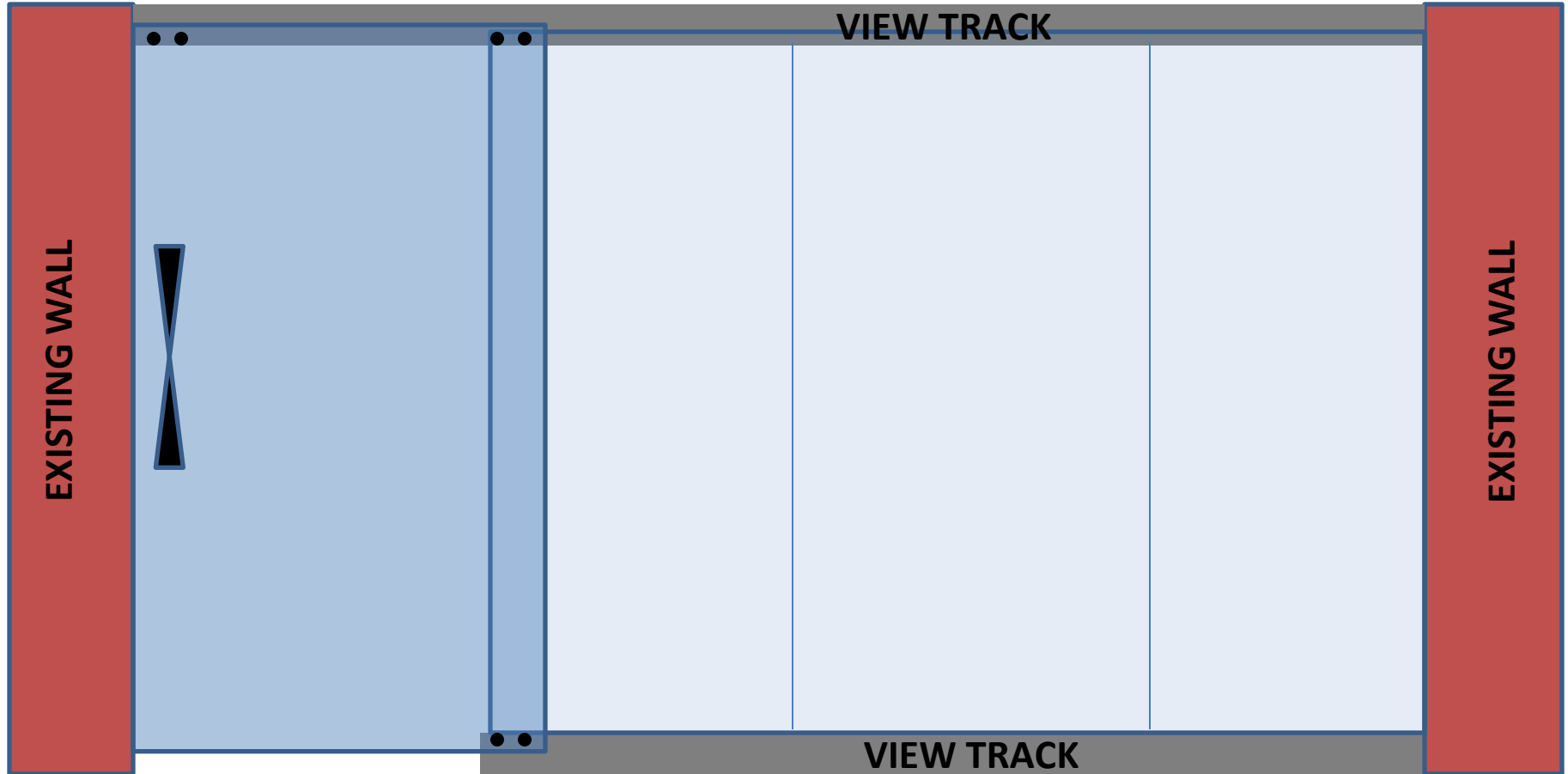
With Standard Bar Pull



A = Top Left
B = Top Right
C = Bottom Left
D = Door Pull Right



VIEW SERIES



FOR MORE INFO

Contact:

info@nxtwall.com

Or call: 269-488-2752