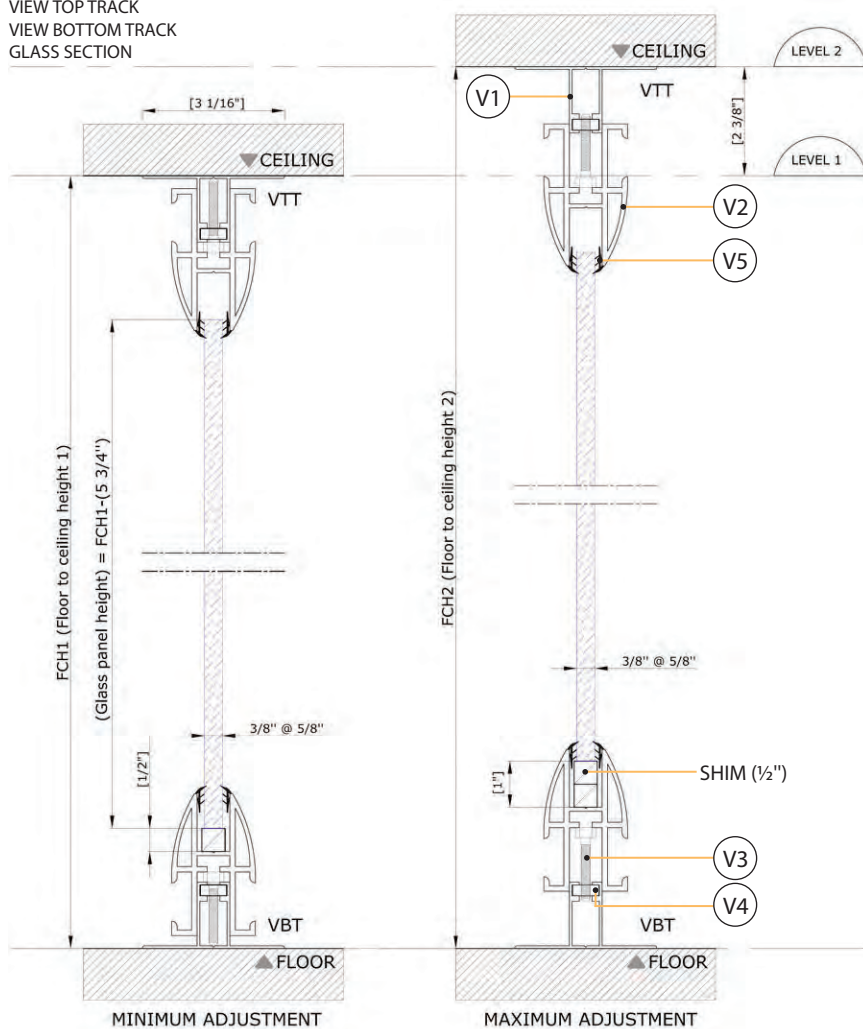


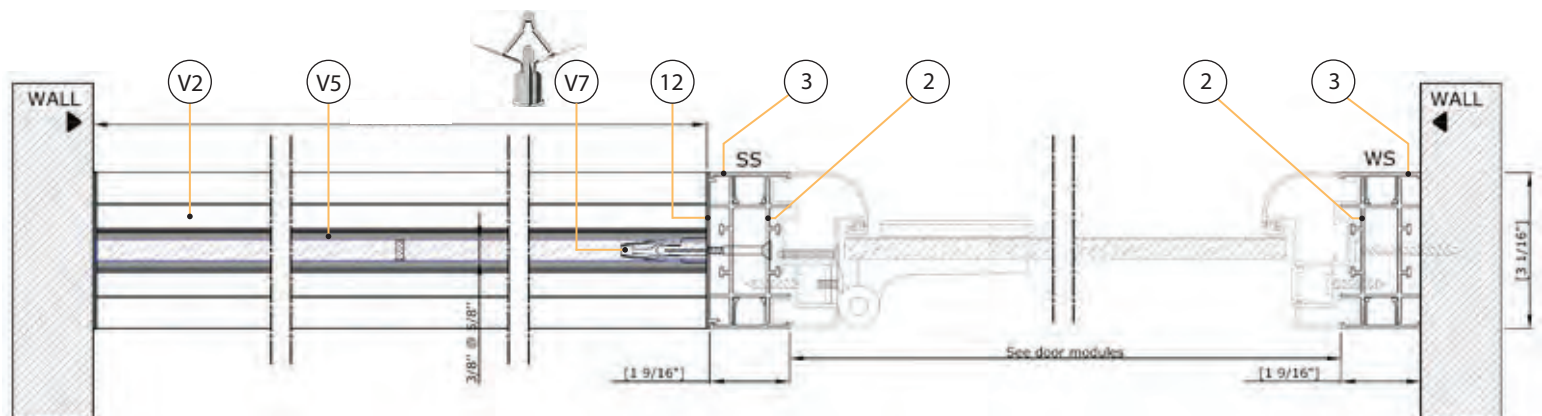
### LEGEND

**SS:** STANDARD STUD  
**FCH1:** FLOOR TO CEILING HEIGHT 1  
**FCH2:** FLOOR TO CEILING HEIGHT 2  
**WS:** WALL STARTER  
**VTT:** VIEW TOP TRACK  
**VBT:** VIEW BOTTOM TRACK  
**G:** GLASS SECTION

### FULL HEIGHT FRAMELESS GLASS SOLUTION

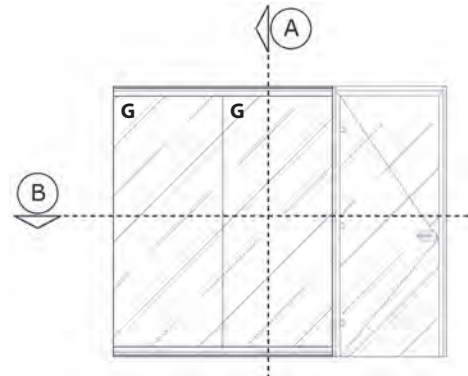


**A VERTICAL SECTION**  
Not to scale



**B HORIZONTAL SECTION**  
Not to scale

### ELEVATION:



### PROFILE DETAILS:

1		NW 80-40 TOP TRACK / BOTTOM TRACK
2		NW 74-40 STANDARD STUD
3		NW 40-17 FLAT COVER STRIP
6		ETAFOAM
7		FIXATION SCREW
8		L-BRACKET
12		FINISHING CAP
V1		NW 78-36 VISION TRACK GUIDE
V2		NW 78-46 VISION TRACK
V3		ADJUSTMENT BOLT
V4		ADJUSTMENT NUT
V5		GLAZING SPLINE
V6		SCREW
V7		DRYWALL ANCHOR

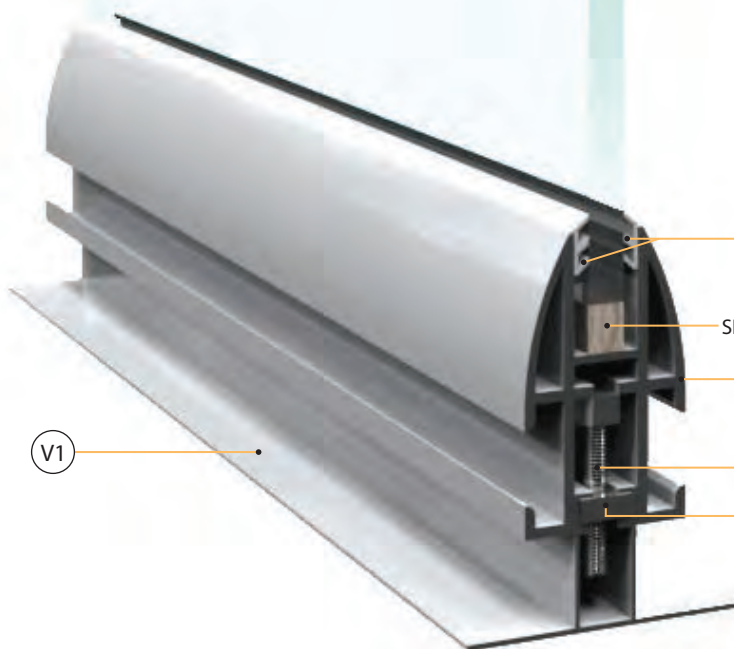
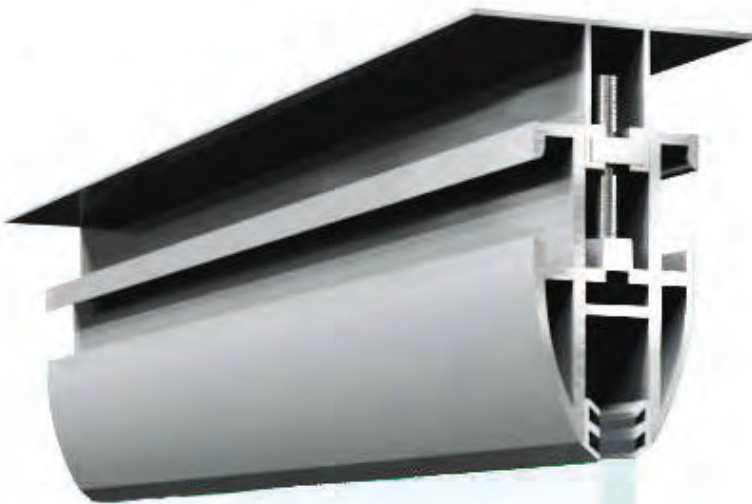
ELEVATION:



## PROFILE DETAILS

V1		NW 78-36 VIEW TRACK GUIDE
V2		NW 78-46 VIEW TRACK
V3		ADJUSTMENT BOLT
V4		ADJUSTMENT NUT
V5		GLAZING SPLINE

FULL HEIGHT FRAMELESS GLASS SOLUTION



GLASS (3/8" @ 5/8")

SHIM (1/2")