



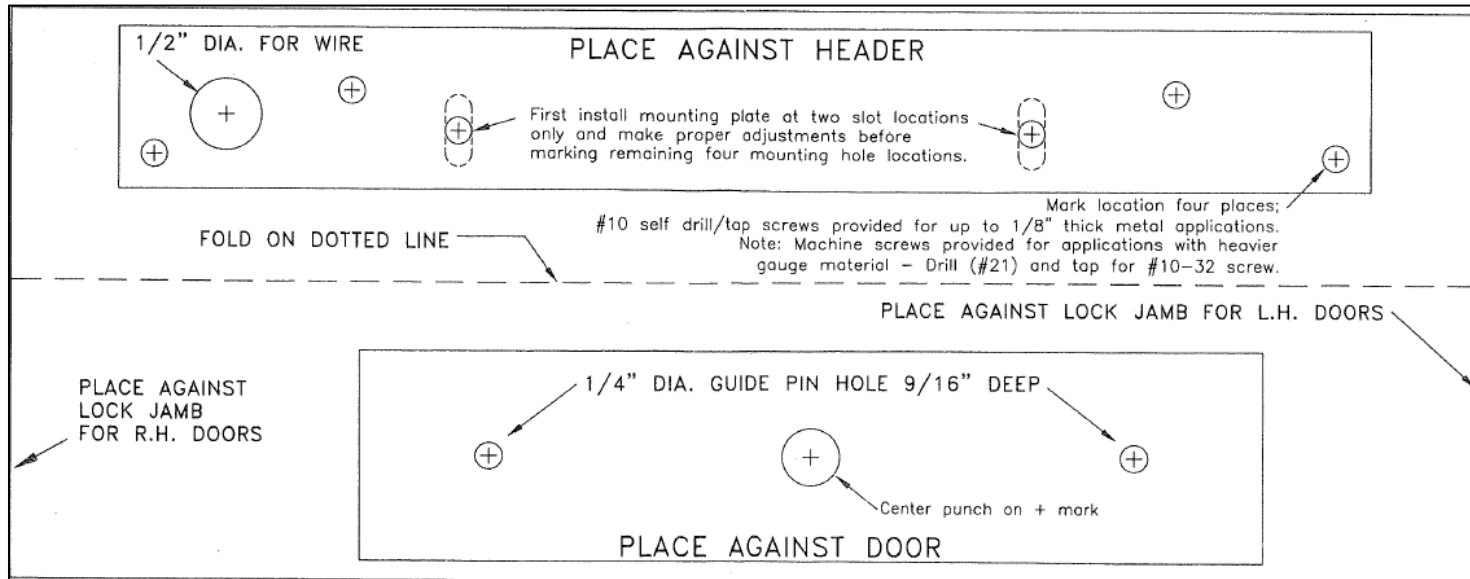
# Maglock Installation

Frameless Glass Door

# Materials:



Package Includes All Necessary Hardware



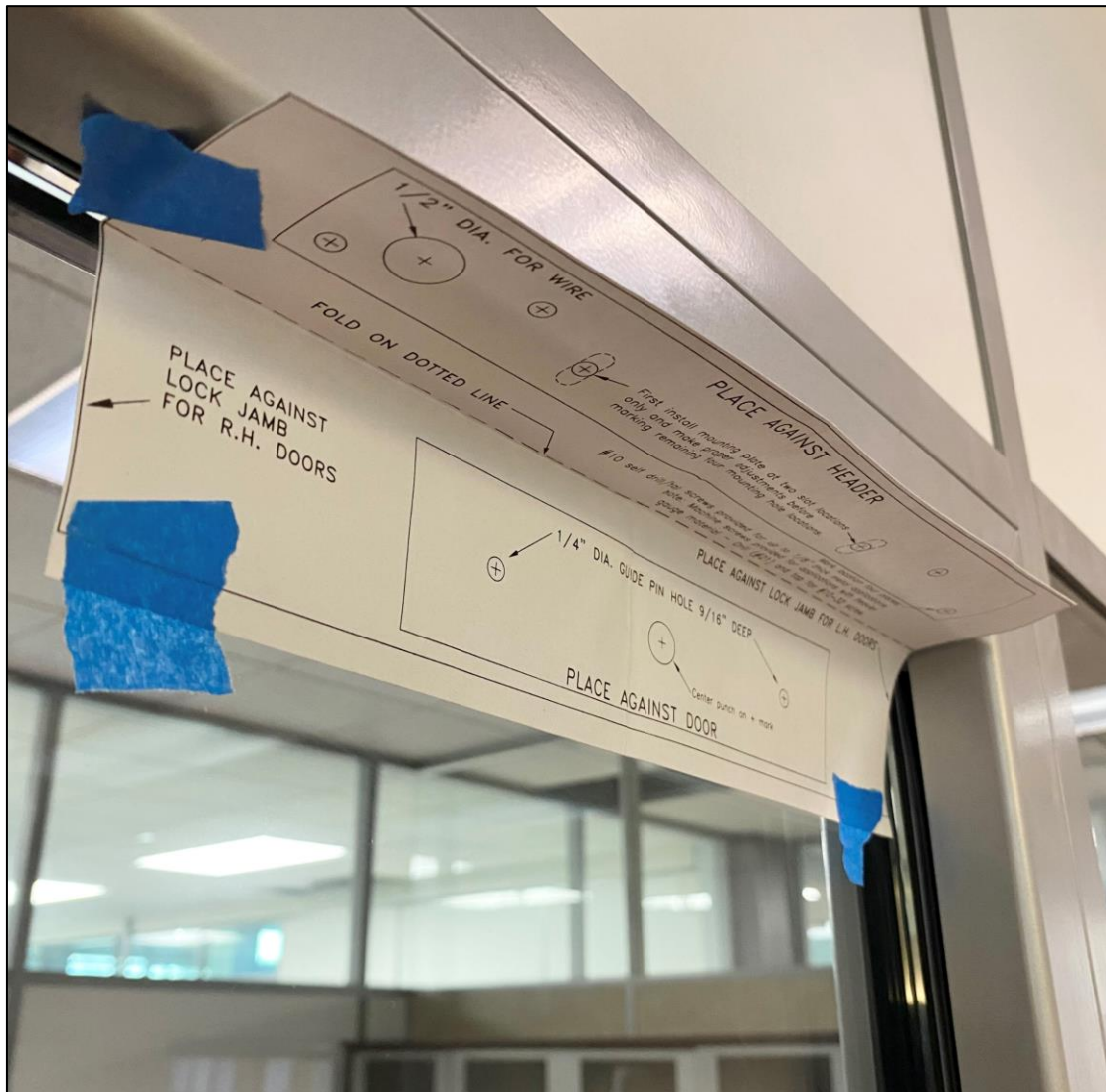
**Note: Template is for reference only. Template is not to scale.  
Use the provided template in the package.**

**Materials Continued:**



NxtWall Maglock Glass Door Bracket

## Template Placement:



Follow the instructions on the template to position the template on the door.

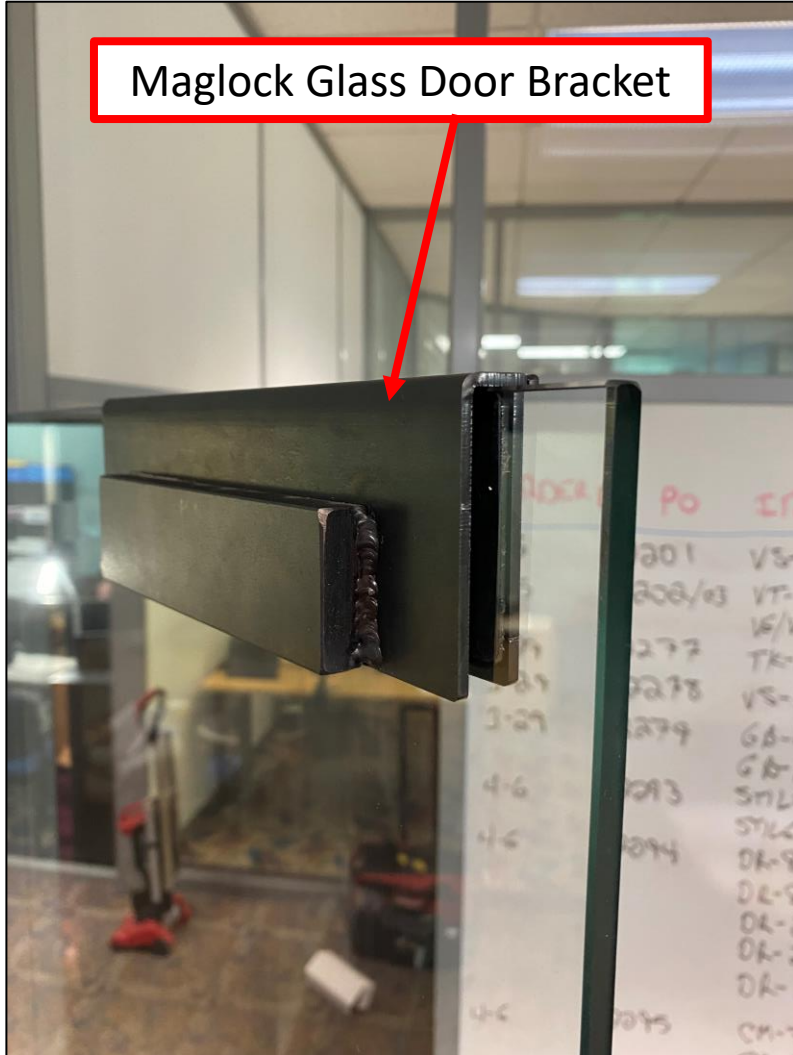
Mark or pre-drill small pilot holes at all locations noted on the template for the **Door Header Only.**

- If pre-drilling pilot holes use a drill bit 1/16" or smaller.

The Maglock Glass Door Bracket can be moved to align with the Maglock once the Maglock is installed.



## Maglock Glass Door Bracket Installation:



Slide the Glass Door Bracket over the top of the door.



The set screws in **RED** hold the internal plate of the bracket. **Please Note: Do NOT tighten these screws, they will contact the glass.**

Once the location of the bracket has been determined tighten the set screws in **BLUE** to tighten the internal plate to the glass door.

## Maglock Mounting Plate Installation:



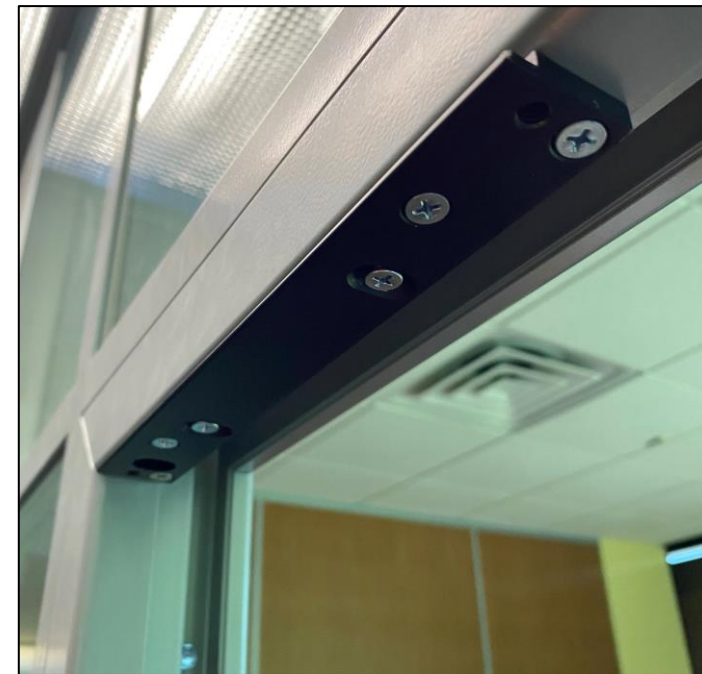
Mount the Maglock Mounting Plate to the door header.

The holes initially marked or drilled on the template for the header are the slotted holes. Use the provided self-tapping screws to attach the mount. Leave the screws loose enough to allow the plate to move within the slotted holes.



Install the Maglock onto the mounting plate, tighten the bolts to hold the Maglock tight to the plate. Close the door to allow the Glass Door Bracket to contact the Maglock. The door in the closed position will locate the mounting plate within the slotted holes.

If needed, adjust the Glass Door Bracket to align with the Maglock.



Remove Maglock from the plate. Anchor the plate using the provided self-tapping screws. The holes can be pre-drilled using an 1/8" drill bit.

## Maglock Installation Completed:



Wiring for the Maglock to be completed by an Electrician or Security contractor.